

Figure 2.1
Urban Areas and Settlements

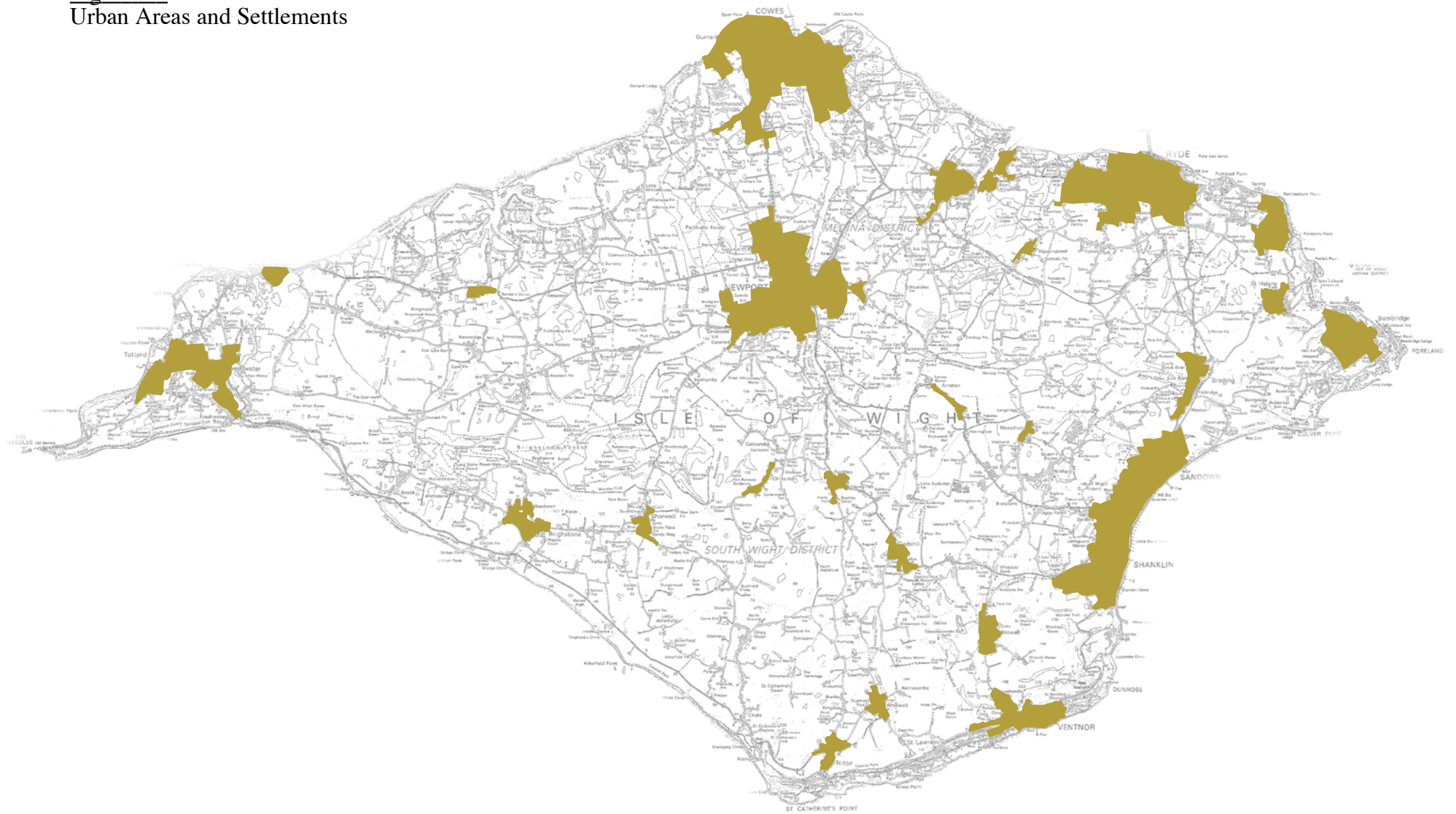


Figure 2.2
Sites of Nature Conservation Interest

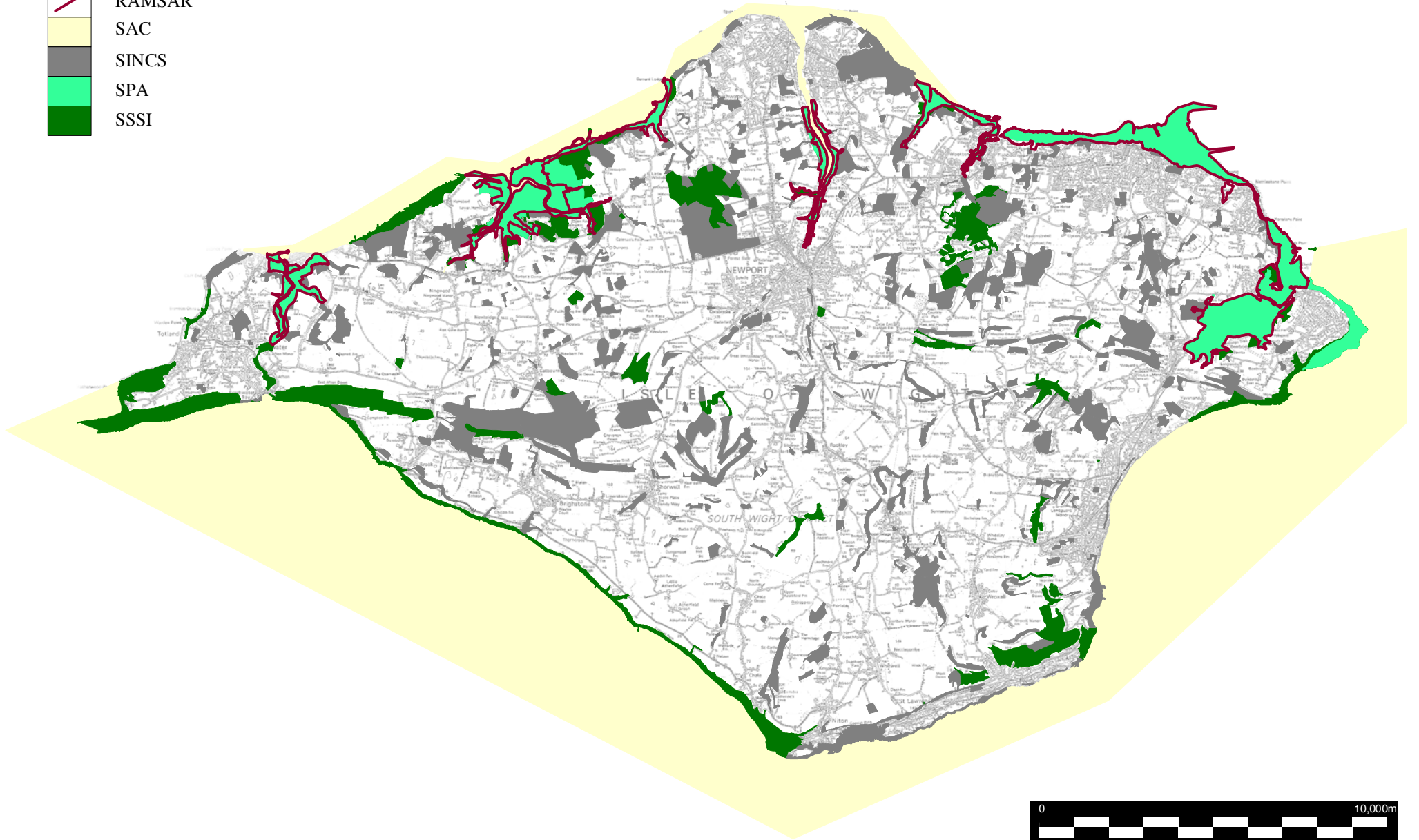
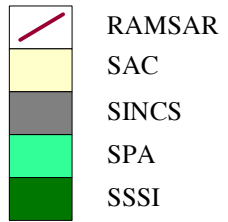


Figure 2.3
AONB & Heritage Coast

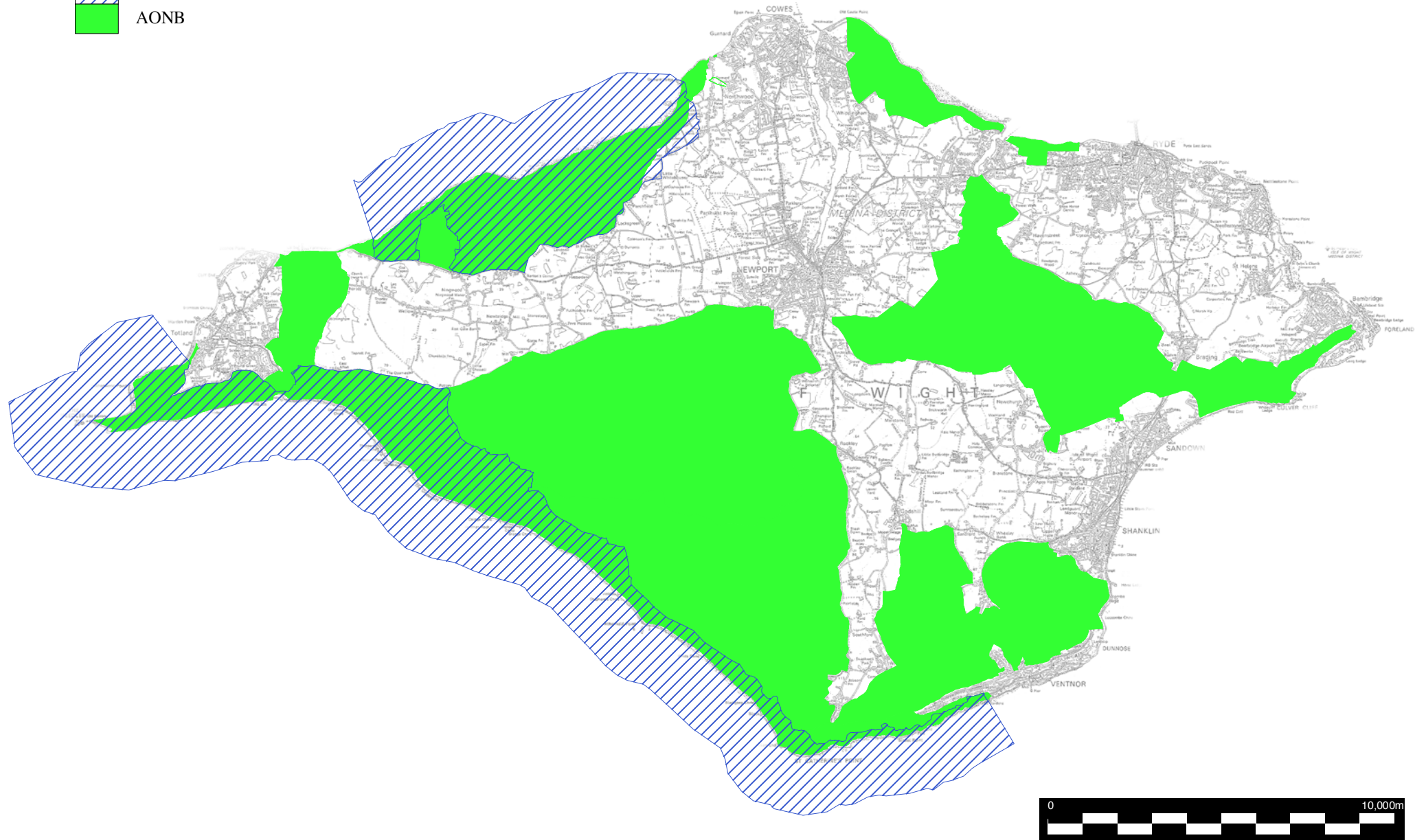


Figure 2.4
Minerals Safeguarding Areas

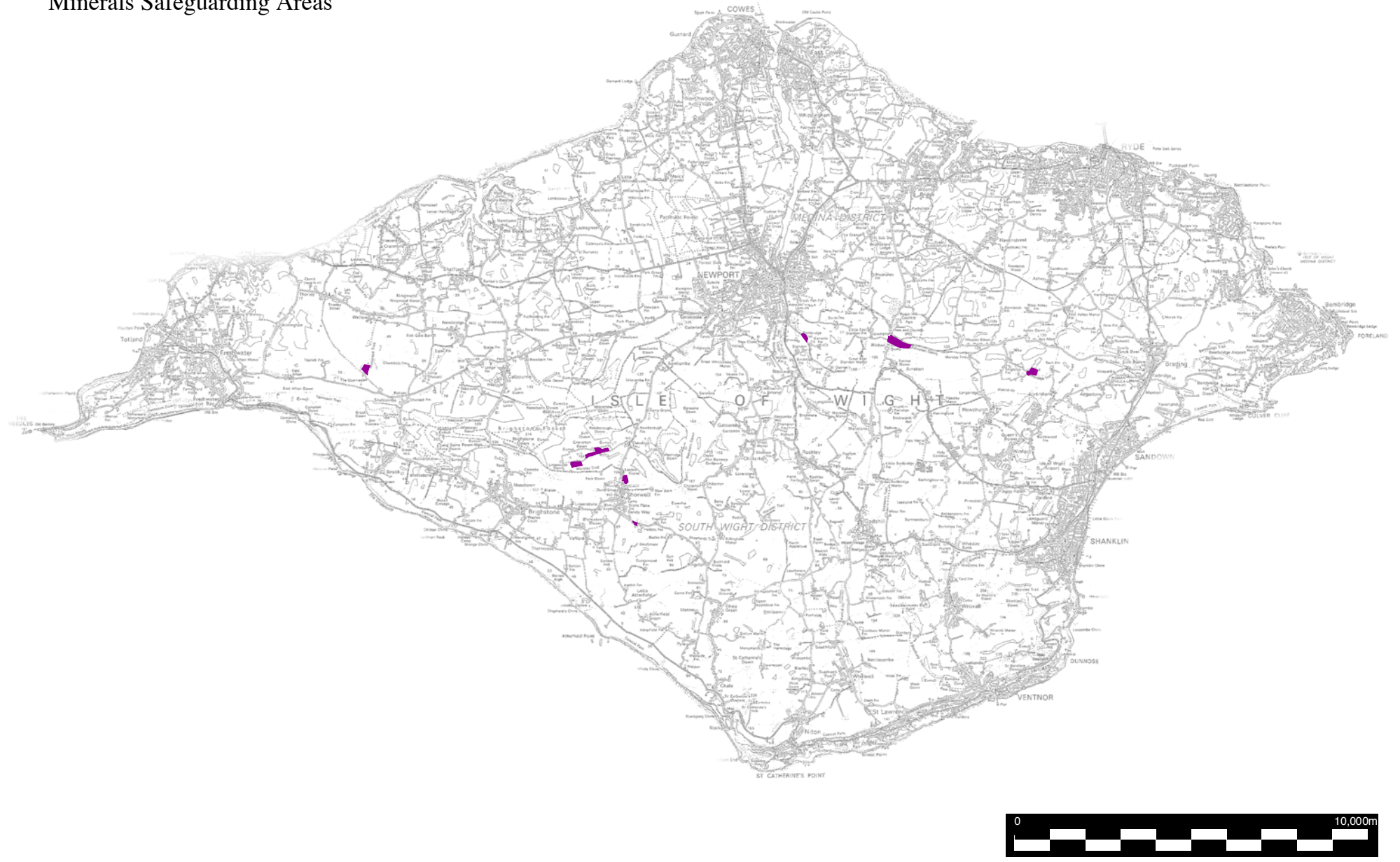




Figure 2.5
Conservation Areas & Historic Parks and Gardens

-  Conservation Areas
-  Historic Parks and Gardens

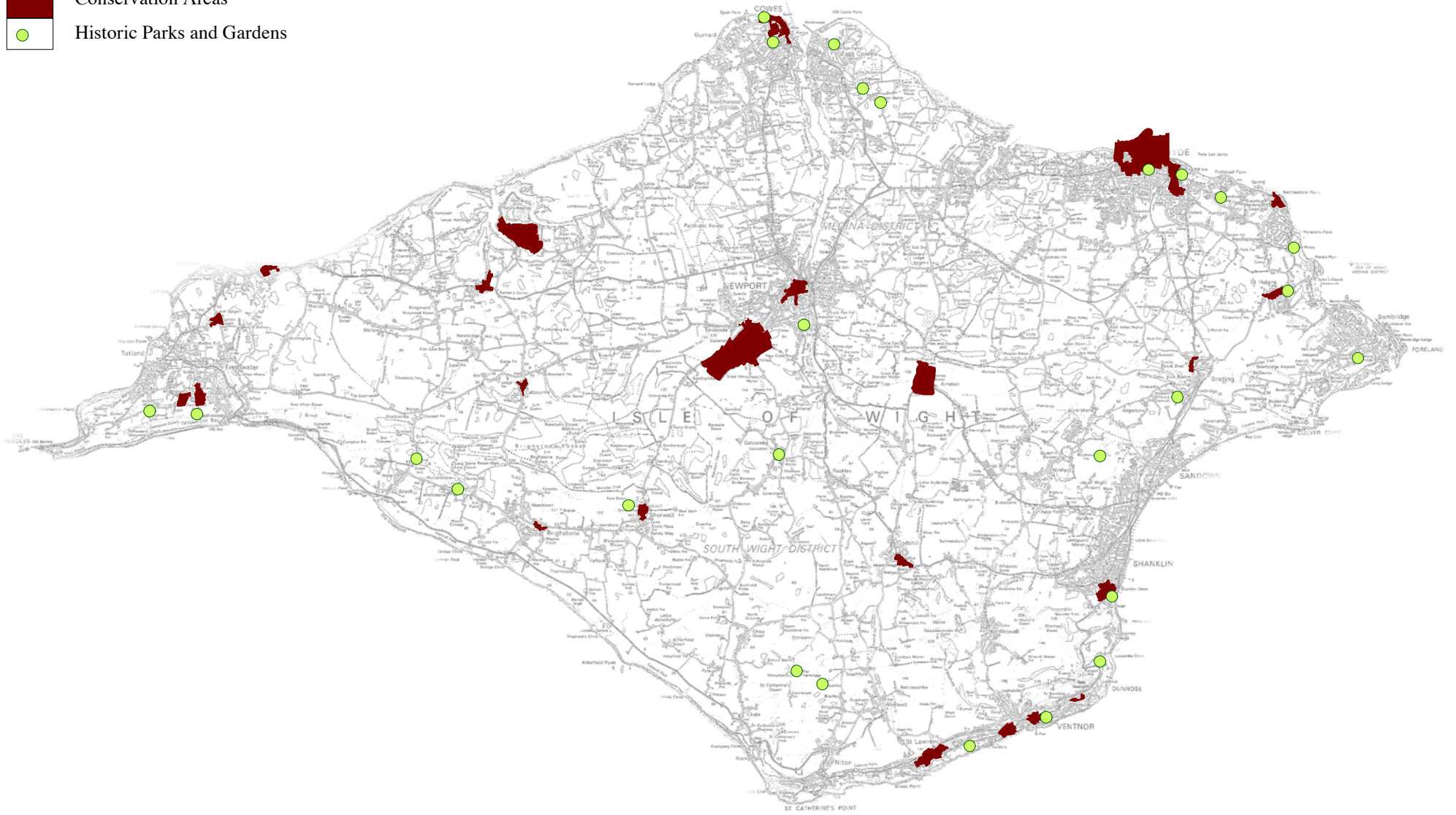





Figure 2.6
National Trails/Picnic Site/ Viewpoints

-  National Trails
-  Viewpoints
-  Picnic Sites

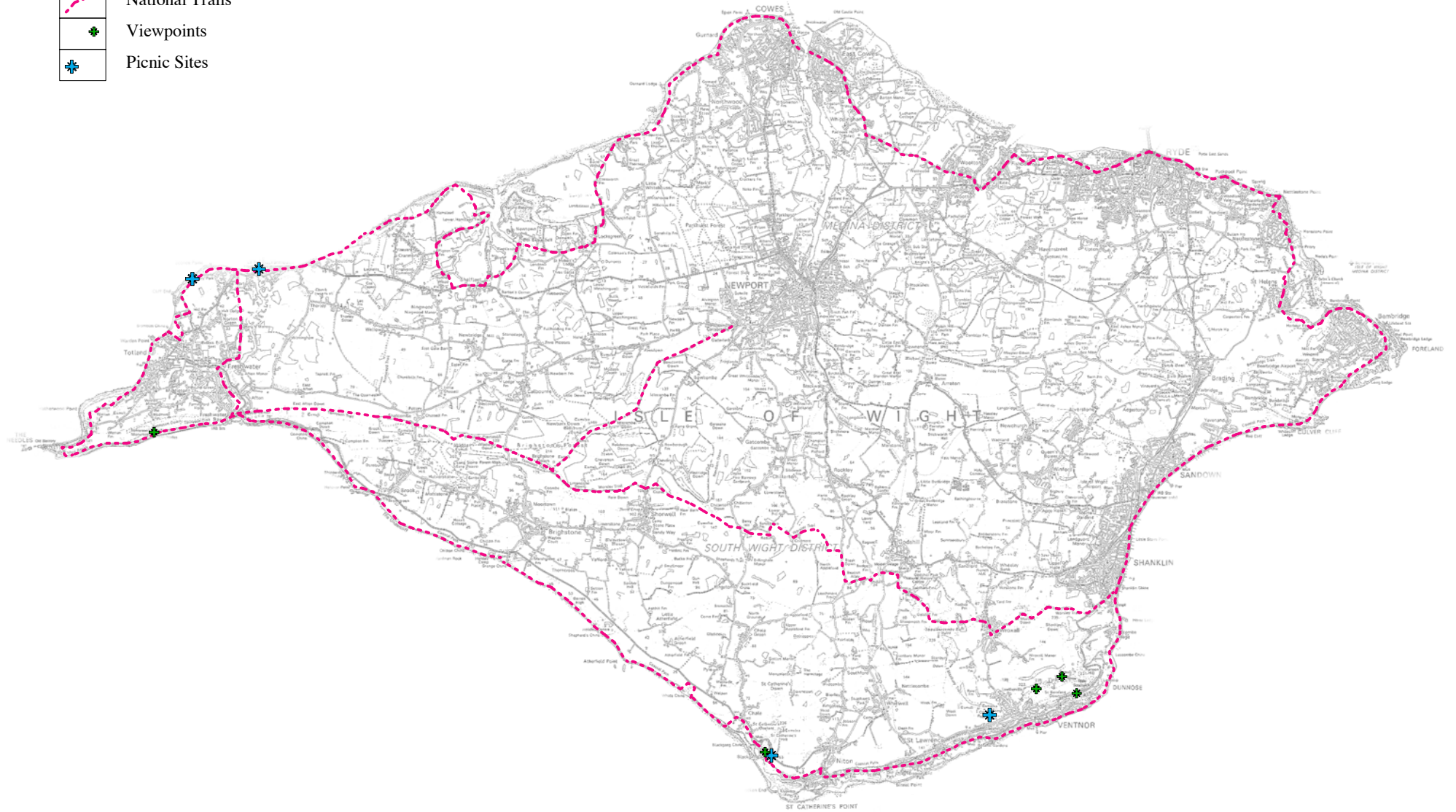


Figure 2.7
Television, Radio, Radar & Aerodrome Related Constraints

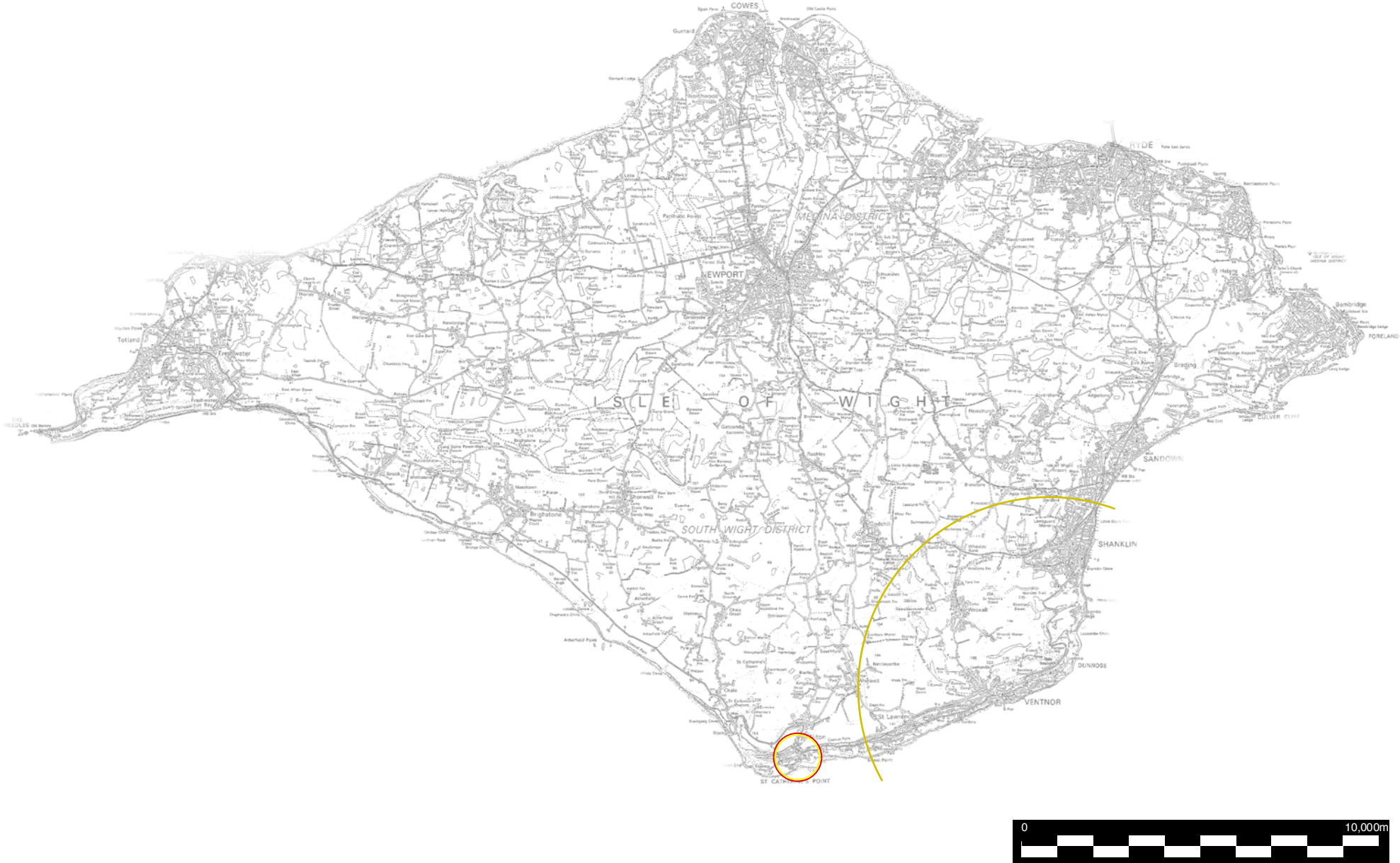


Figure 2.8
Regionally Important Geological Sites

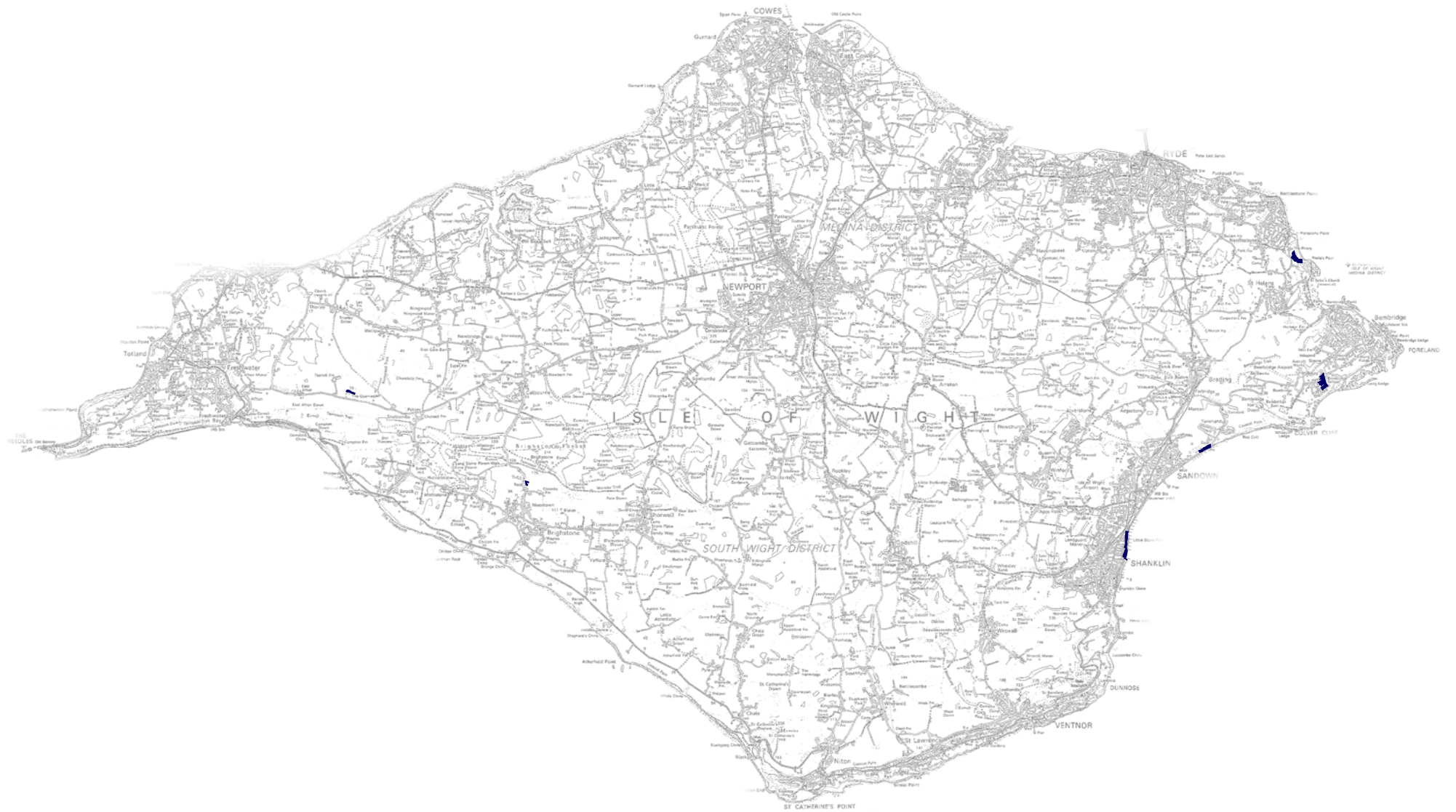


Figure 2.9
National Trust & Forestry Commission

-  National Trust
-  Forestry Commission Access Land

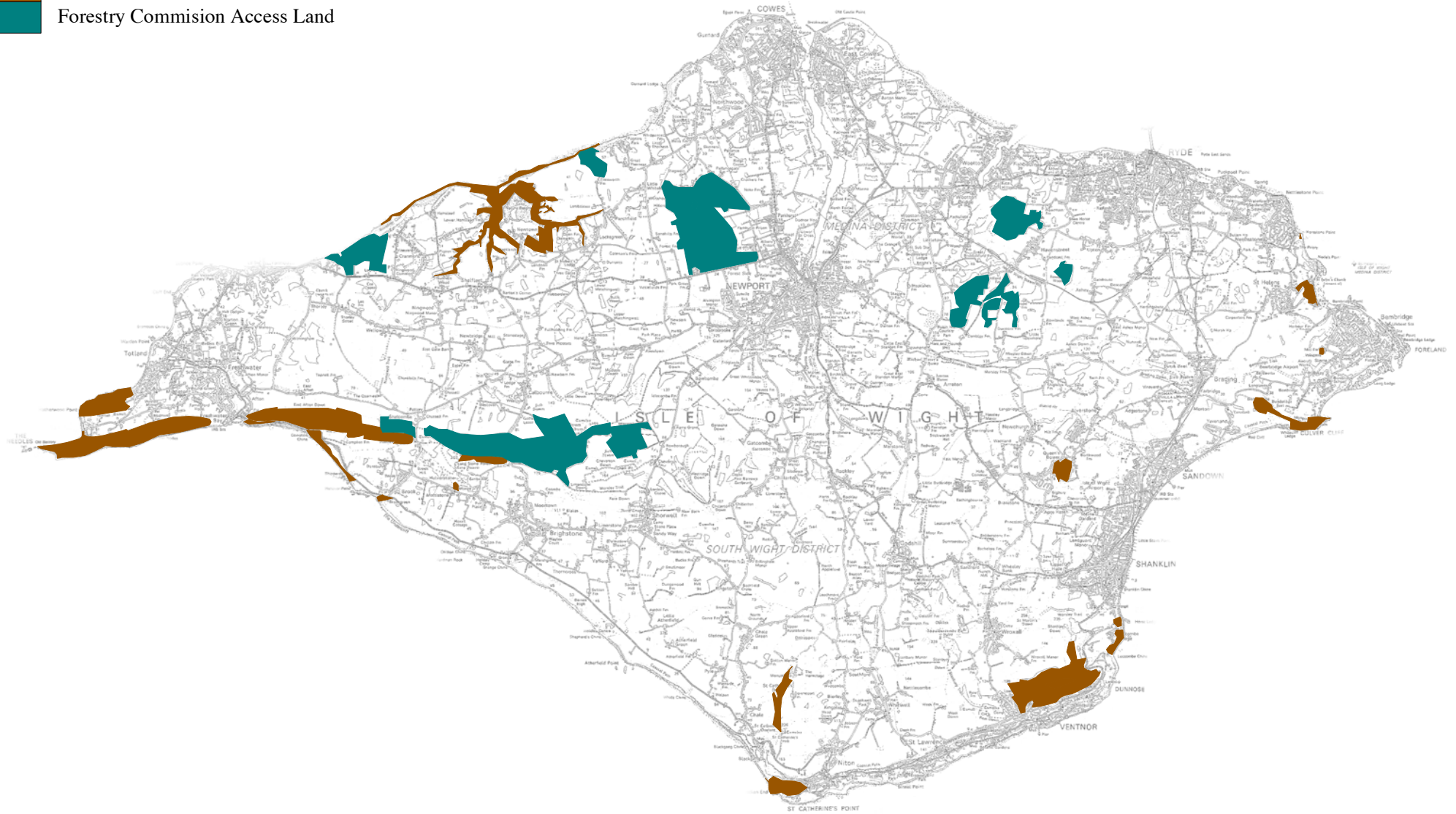


Figure 2.10
Negative Filter Composite

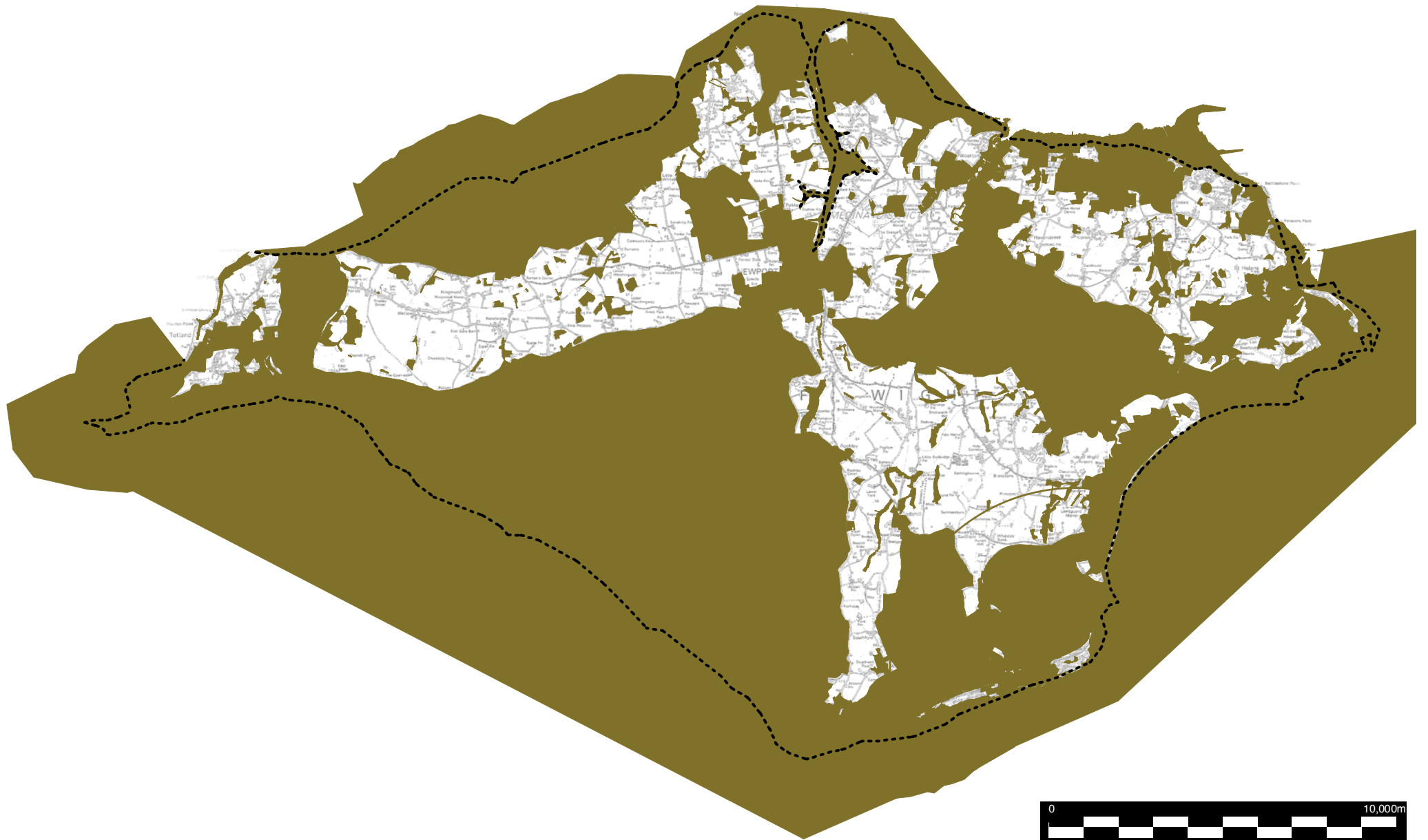


Figure 2.11
Average Wind Speeds (m/s)
ETSU 1994

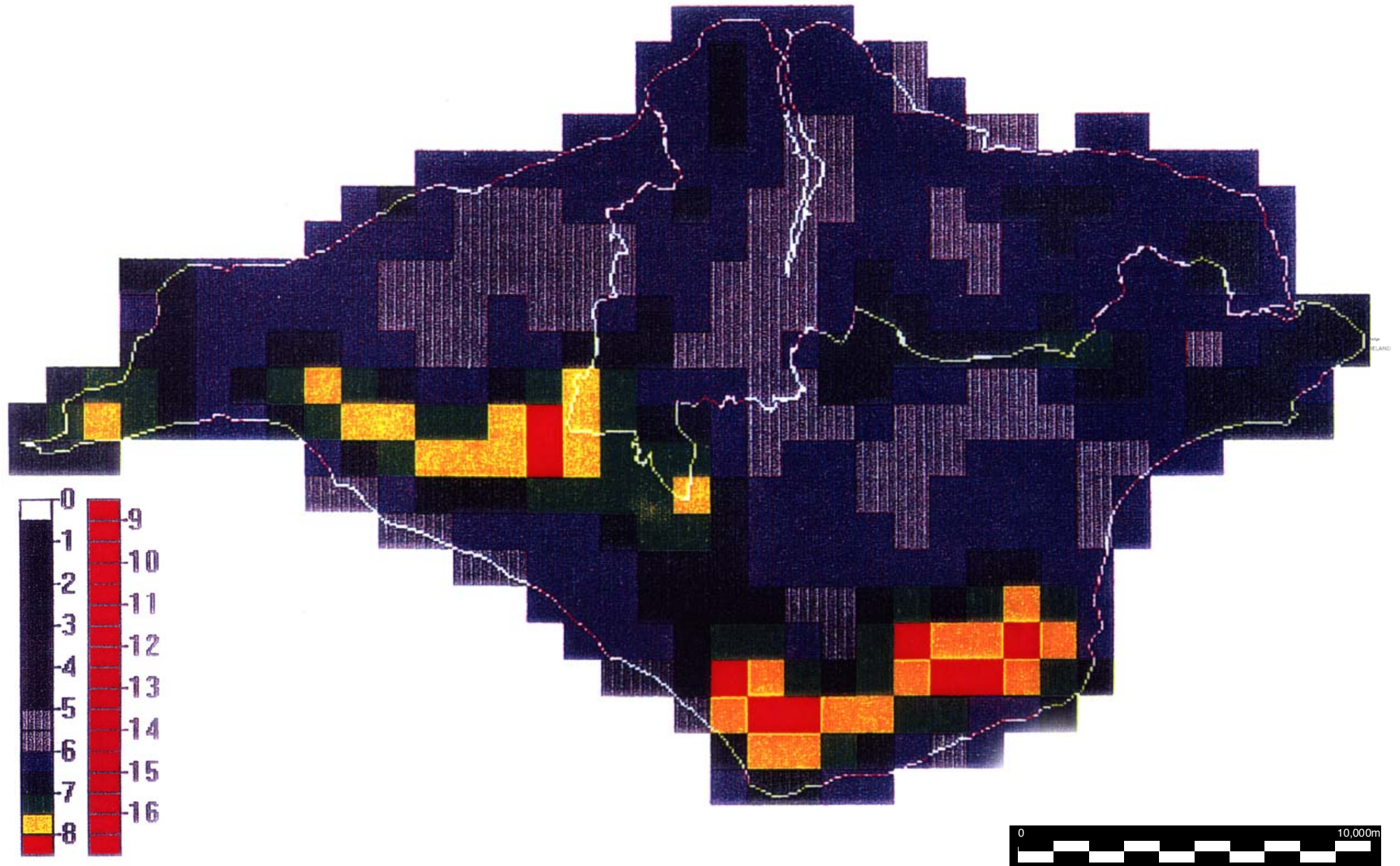


Figure 2.12
Strategic Road Network

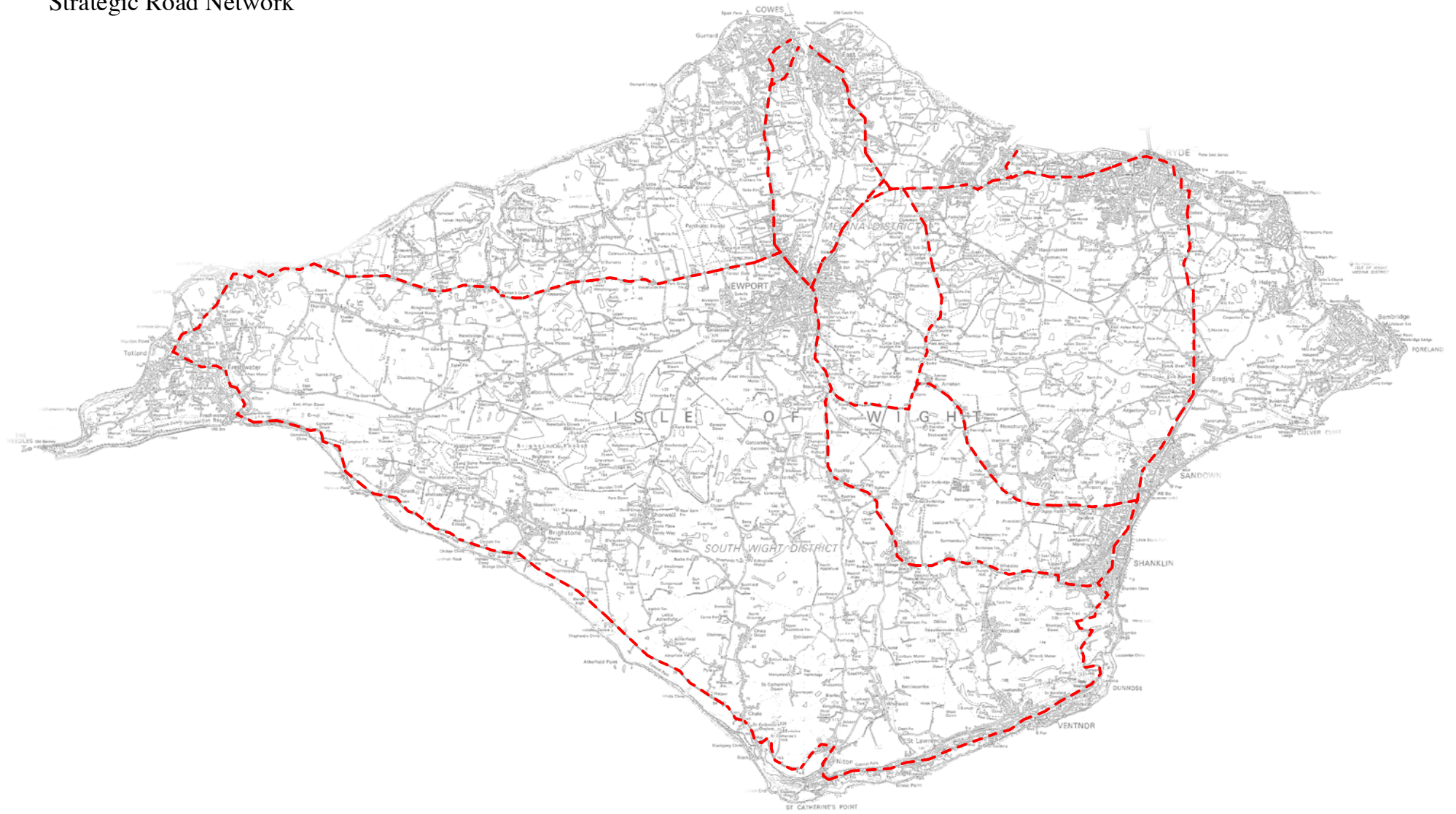








Figure 2.13
Electricity Grid

-  33kV Line
-  132 kV Line
-  33kV Cable
-  132kV Cable
-  Substations
-  Power Station

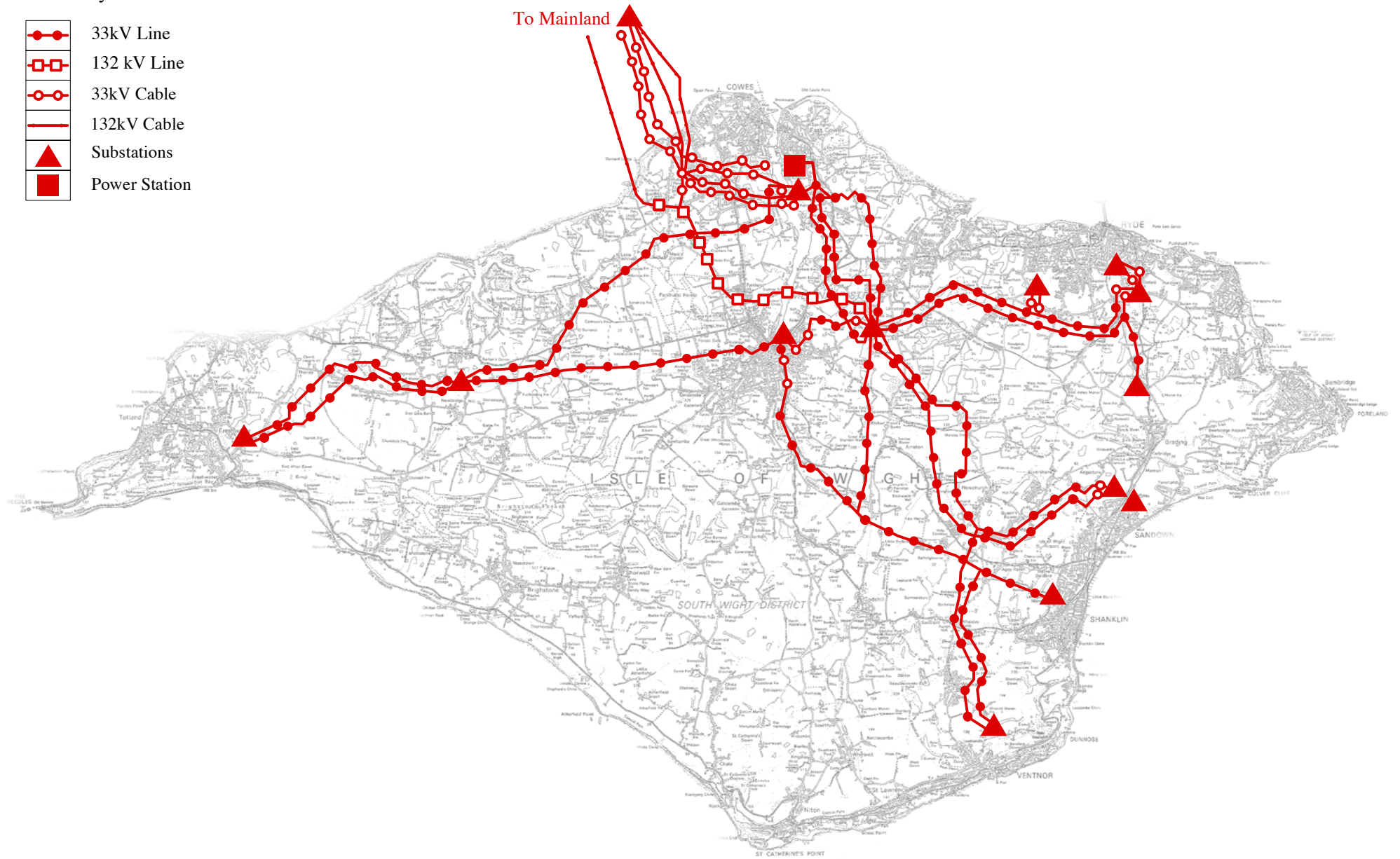










Figure 2.14
Potential Areas of Search

- | | |
|---|--|
| 1 | Land North-East of Niton and West of Whitwell |
| 2 | Land West of Wroxall |
| 3 | Land South of Freshwater and East of Totland |
| 4 | Land North of Freshwater |
| 5 | Land North-East of Afton and North of the B3399 Newport Road |
| 6 | Land South West of Bembridge |
| | Constrained Land |



Figure 2.15
Absolute Constraints Composite

-  Conservation Areas
-  Heritage Coast
-  Historic Parks and Gardens
-  RIGS
-  SPA
-  National Trust
-  Forestry Commission Land
-  Urban Areas

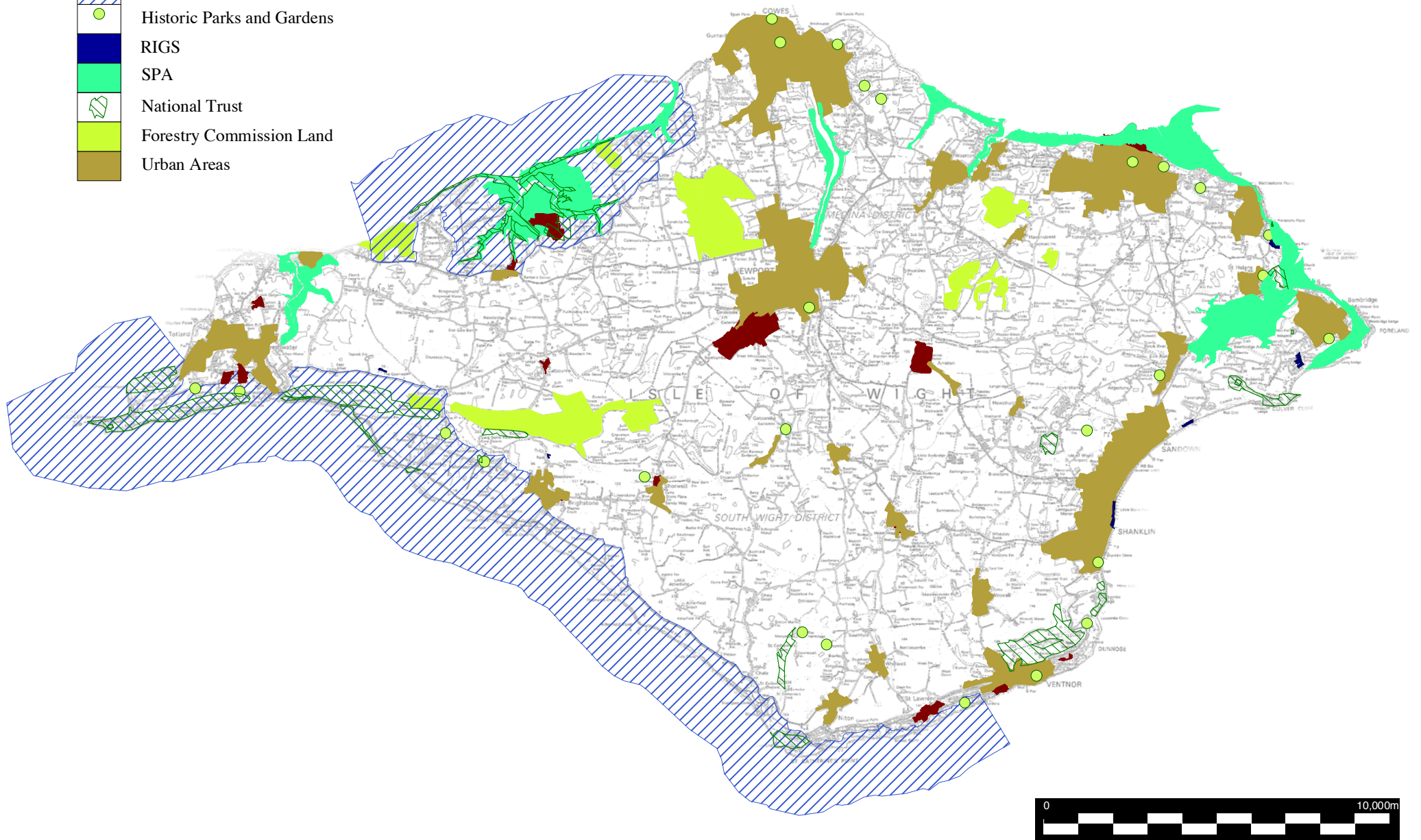





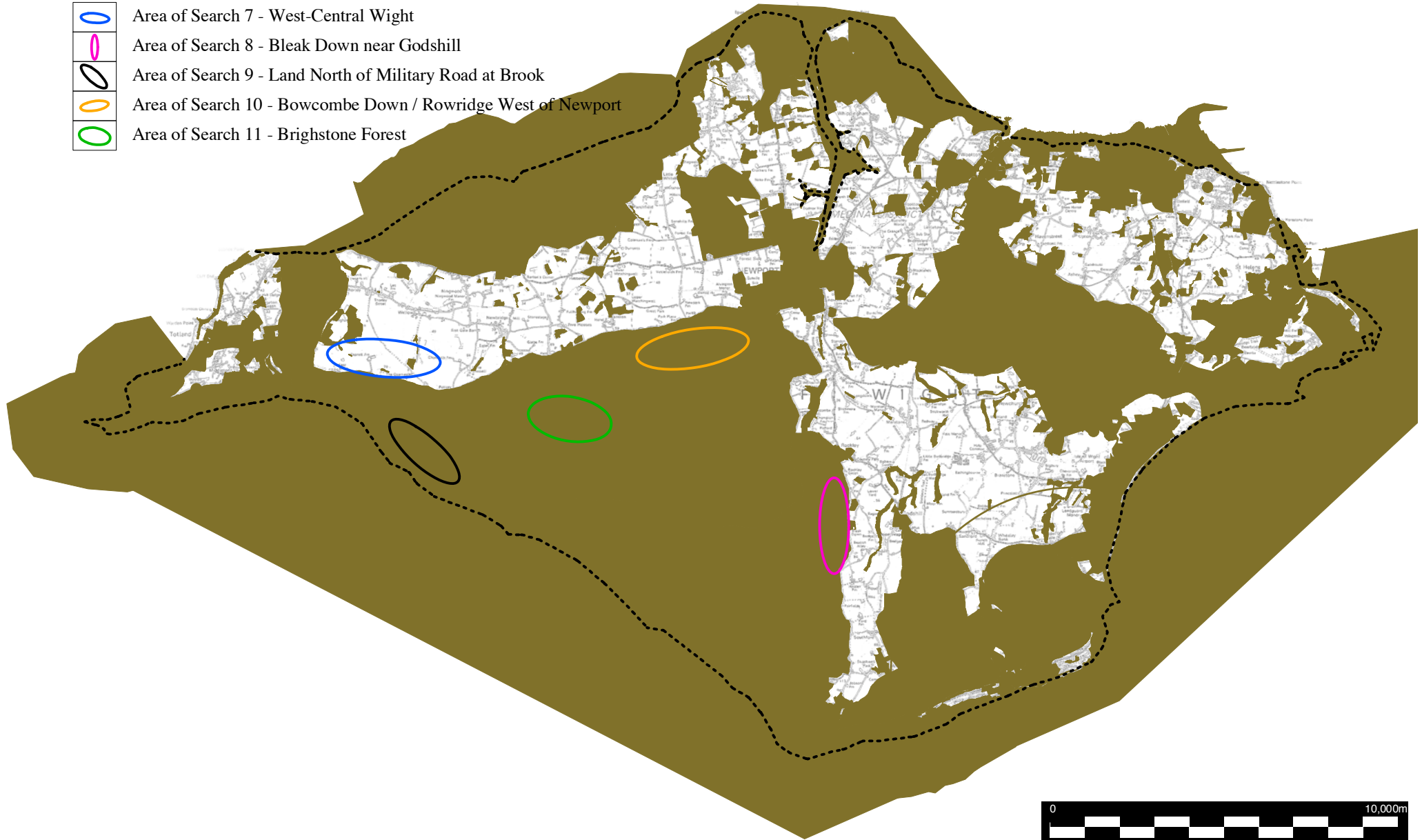


Figure 2.16

Second Sieve- Preferred Areas

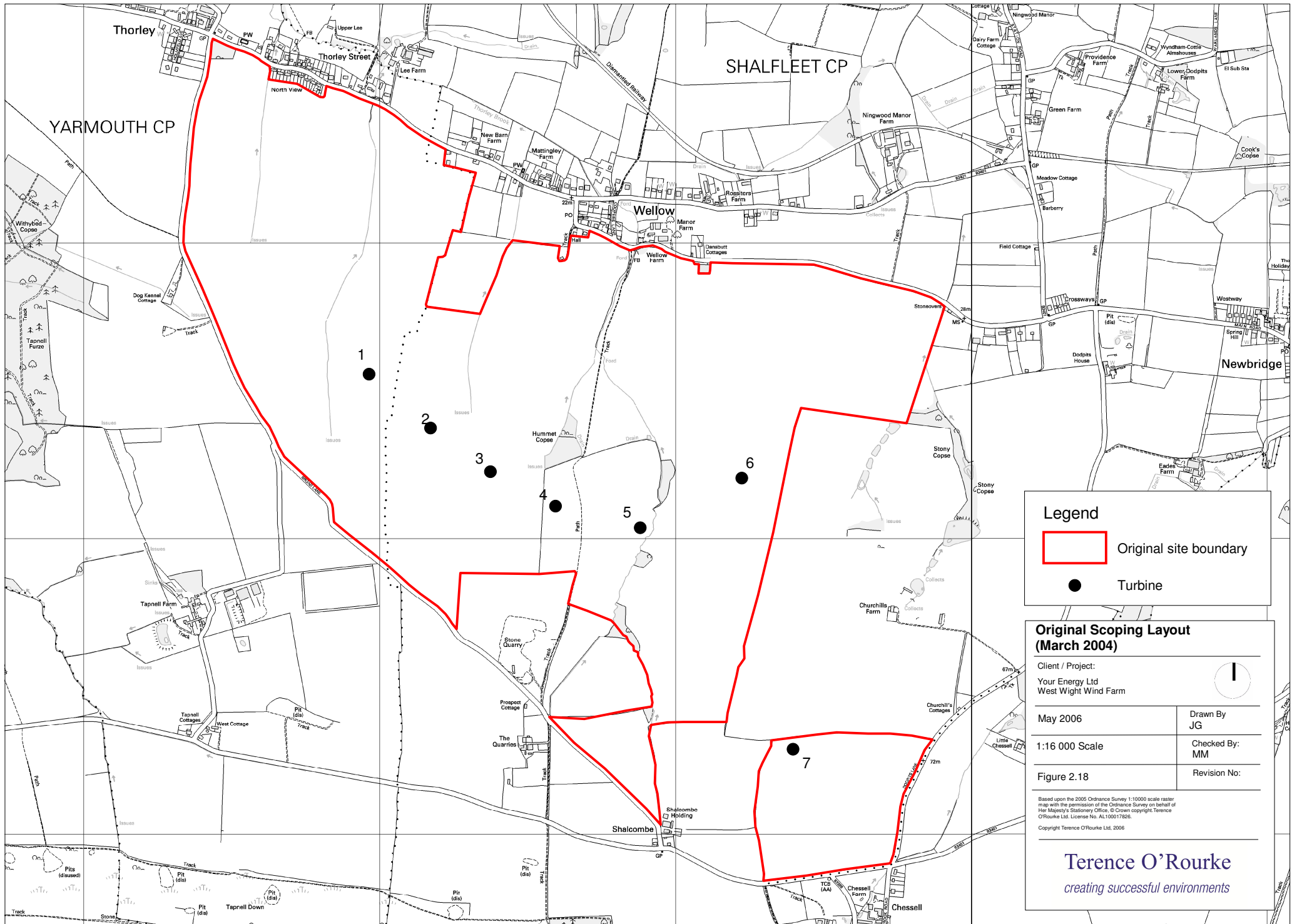
Based on planning, environmental
and technical feasibility considerations

-  Area of Search 7 - West-Central Wight
-  Area of Search 8 - Bleak Down near Godshill
-  Area of Search 9 - Land North of Military Road at Brook
-  Area of Search 10 - Bowcombe Down / Rowridge West of Newport
-  Area of Search 11 - Brighstone Forest



Site Number	Site Name	Site size	Suitable wind resource	Not on National Trust or Forestry Commission land	Not within nature conservation designation	Not within AONB or heritage coast	Greater than 500m from urban settlement	Not affecting known archaeological sites	Not affecting national trails/picnic sites/viewpoints	Not affecting conservation areas or historic parks and gardens	Proximity to electricity grid / ease of connection	Good road access	Extent of potential visual effect	Landscape character
7	West-central Isle of Wight	Meets criterion	Meets criterion	Meets criterion	Partially meets criterion	Meets criterion	Meets criterion	Meets criterion	Partially meets criterion	Meets criterion	Meets criterion	Meets criterion	Meets criterion	Meets criterion
8	Bleak Down	Meets criterion	Partially meets criterion	Meets criterion	Partially meets criterion	Does not meet criterion	Meets criterion	Meets criterion	Partially meets criterion	Meets criterion	Partially meets criterion	Partially meets criterion	Partially meets criterion	Does not meet criterion
10	Bowcombe Down / Rowridge	Meets criterion	Meets criterion	Meets criterion	Meets criterion	Does not meet criterion	Meets criterion	Meets criterion	Partially meets criterion	Meets criterion	Meets criterion	Meets criterion	Does not meet criterion	Partially meets criterion

Figure 2.17 : Alternative Sites Summary Matrix



Legend

- Original site boundary
- Turbine

**Original Scoping Layout
(March 2004)**

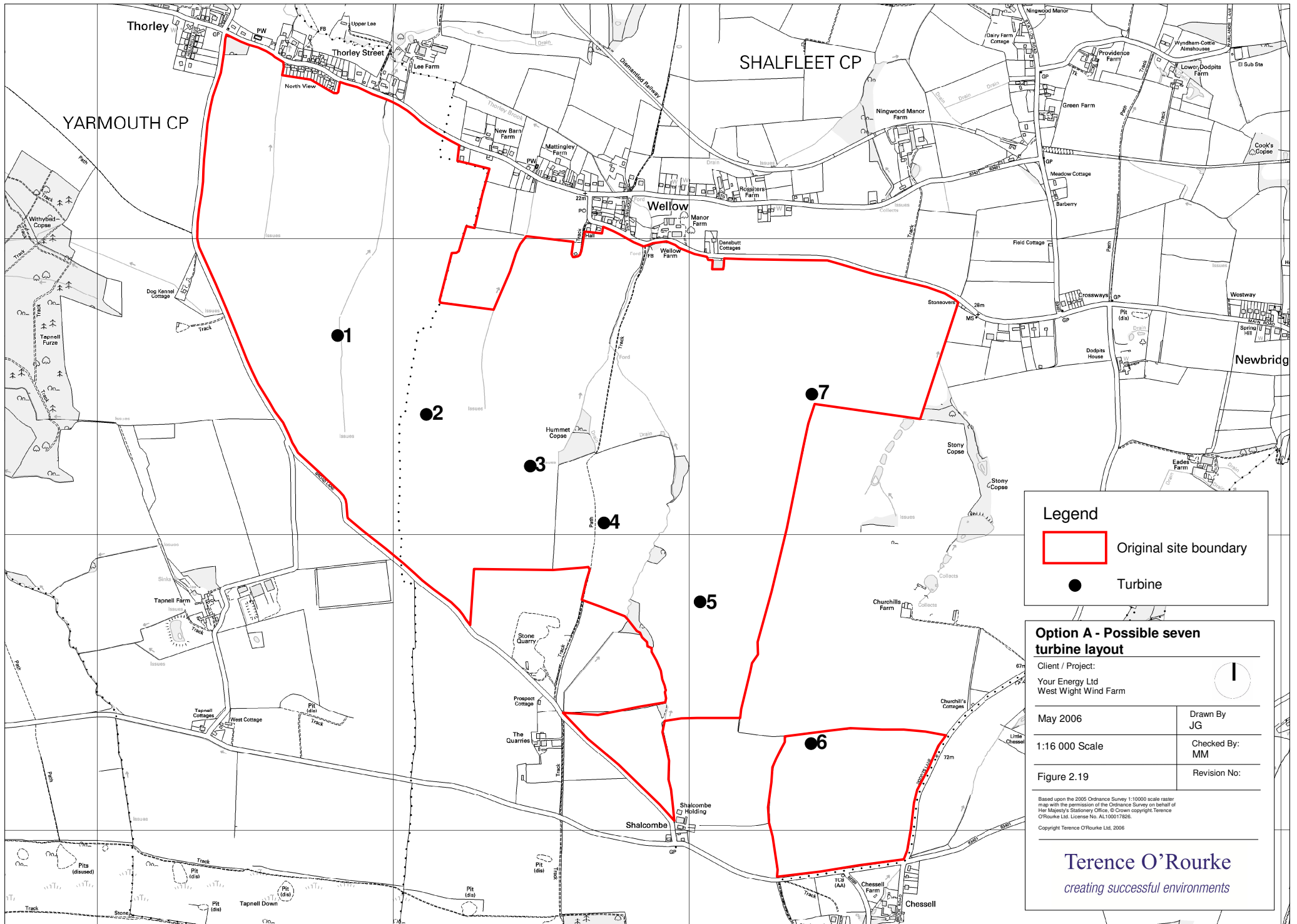
Client / Project:
Your Energy Ltd
West Wight Wind Farm

May 2006 1

1:16 000 Scale	Drawn By: JG
Figure 2.18	Checked By: MM
	Revision No:

Based upon the 2005 Ordnance Survey 1:10000 scale raster map with the permission of the Ordnance Survey on behalf of Her Majesty's Stationary Office. © Crown copyright. Terence O'Rourke Ltd. License No. AL100017626.
Copyright Terence O'Rourke Ltd. 2006

Terence O'Rourke
creating successful environments



Legend

Original site boundary

Turbine

Option A - Possible seven turbine layout

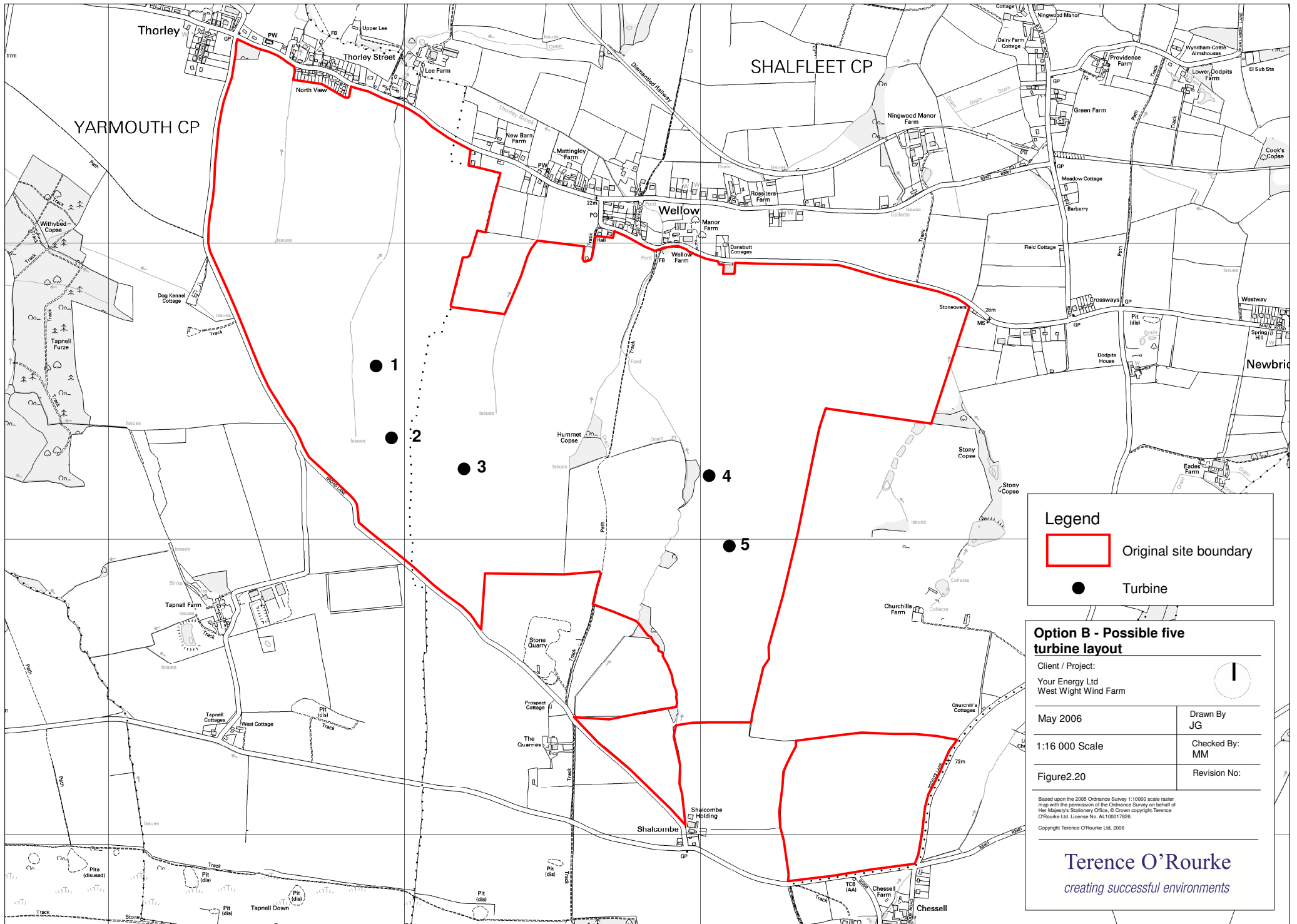
Client / Project:
Your Energy Ltd
West Wight Wind Farm

May 2006 1

1:16 000 Scale	Drawn By: JG
Figure 2.19	Checked By: MM
	Revision No:

Based upon the 2005 Ordnance Survey 1:10000 scale raster map with the permission of the Ordnance Survey on behalf of Her Majesty's Stationary Office. © Crown copyright, Terence O'Rourke Ltd. License No. AL100017626.
Copyright Terence O'Rourke Ltd. 2006

Terence O'Rourke
creating successful environments



Legend

- Original site boundary
- Turbine

Option B - Possible five turbine layout

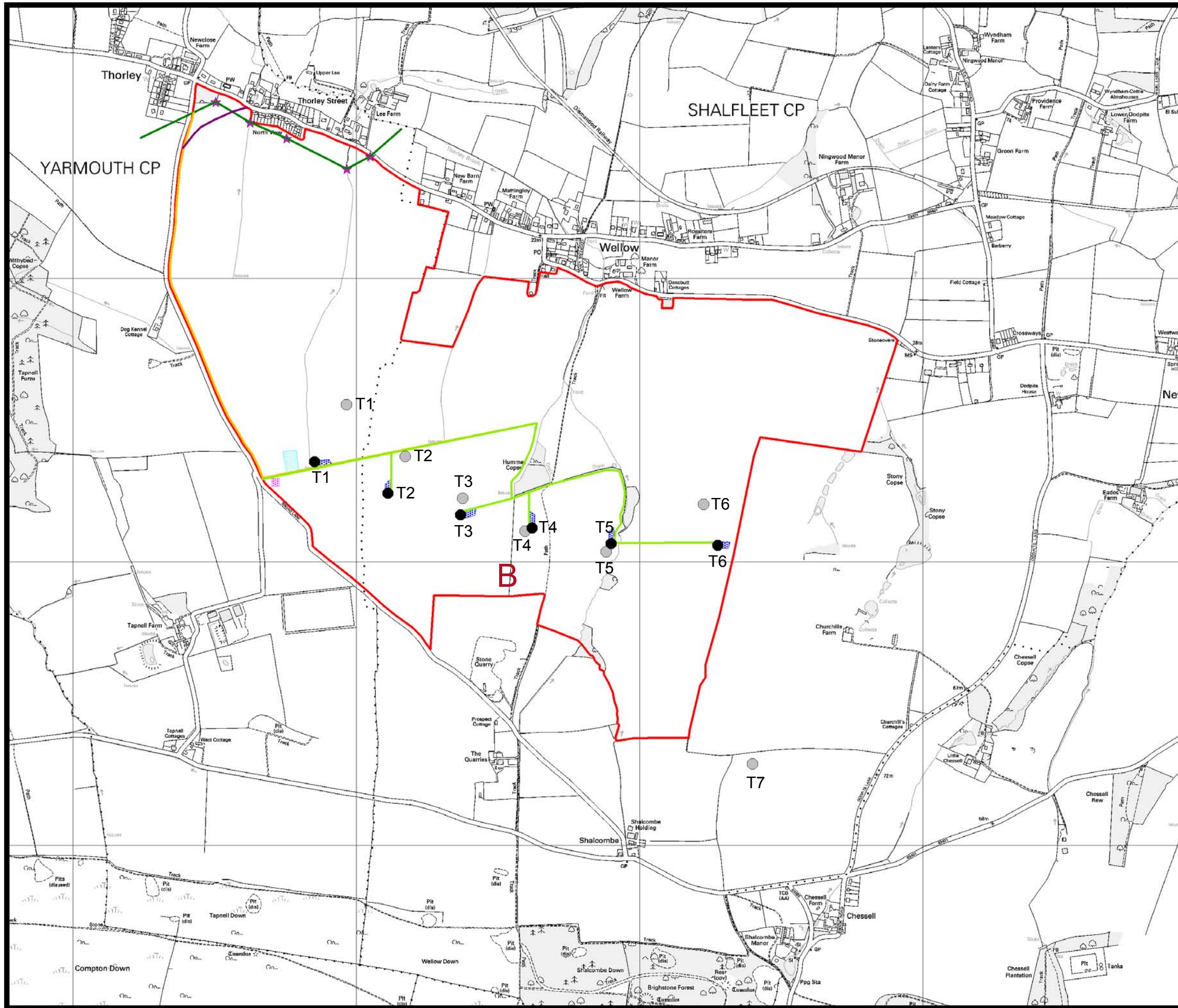
Client / Project:
Your Energy Ltd
West Wight Wind Farm

May 2006 1

1:16 000 Scale	Drawn By: JG
Figure 2.20	Checked By: MM
	Revision No:

Based upon the 2005 Ordnance Survey 1:10000 scale raster map with the permission of the Ordnance Survey on behalf of Her Majesty's Stationary Office. © Crown copyright, Terence O'Rourke Ltd. License No. AL100017828.
Copyright Terence O'Rourke Ltd. 2006

Terence O'Rourke
creating successful environments



Key

- Turbines
- Turbines - original layout
- Permanent access road
- Temporary access road
- ▭ Crane pad
- Existing SSE 33kV overhead line
- New 33kV line underground
- B** 59m wind monitoring mast (438540, 86932)

Note:
All access roads to be 5m wide.

Reproduced from 1:10,000 raster data by permission of Ordnance Survey® on behalf of the Controller of H.M. Stationary Office. © Crown copyright 2005. All rights reserved. License No. AL 100037648.

