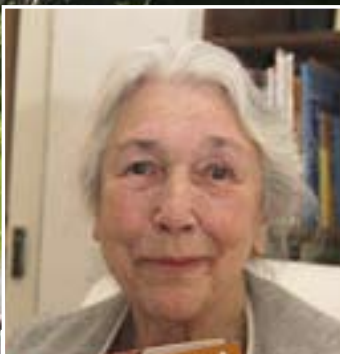


£364 million investment for Island highways

Major PFI scheme
approved

Also inside:



A brighter life for Audrey



Lifeguards: at your service

Plus: four-page council tax
and budget supplement

Advertising in One Island

More than 43,000 copies of *One Island* are distributed throughout the Island every two months.

The magazine is published as an insert in the Isle of Wight County Press – with additional copies available in libraries, post offices, help centres, doctors' surgeries and other key locations.

If you would like to advertise in the magazine, why not contact us for more information and a copy of our rate card:

Tel: 823351

Email:

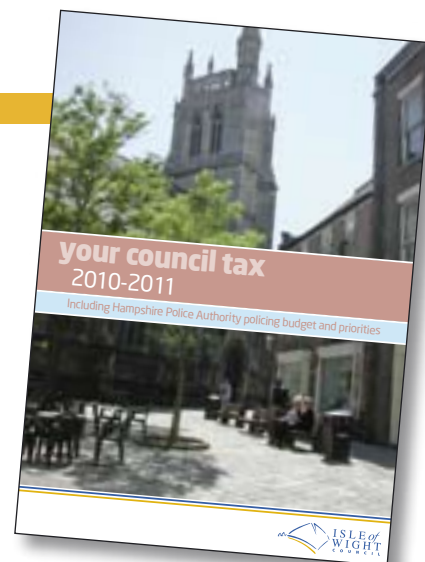
oneisland@iow.gov.uk

You can also download a copy of the rate card from the council's iowight.com website.

WELCOME

to the March issue of *One Island* magazine. In this edition we include a four-page guide featuring important information about your council tax for 2010/2011, together with details about the council's spending plans for the year ahead and its key programme of improvements.

More details about the council's budget will be provided in a 24-page booklet due to be delivered to all households in March along with your council tax information.



USEFUL CONTACTS

Isle of Wight Council, County Hall, Newport PO30 1UD

Fax: 823333

Email:

customer.services@iow.gov.uk

Website: www.iowight.com

TELEPHONE SERVICES

Call centre: 821000

Monday to Friday: 8am to 6pm
Saturday: 9am to 1pm

We recommend you contact the call centre initially, where we aim to answer as many enquiries as possible at this first point of contact.

Popular numbers

Automated telephone payments	559310
Building control	823580
Council tax	823901
Education	823455
Environmental health	823000
Housing benefits	823950
Leisure services	823828
Libraries	203880
Licensing	823000
Parking services	823714
Planning	823552
Refuse collection	823777
Registrars	823233
Roads and highways	823777
Tourism	813813/813823
Trading standards	823396
Consumer Direct	08454 040506
Wightbus	823782
Dial-a-bus	522226

Community services

Adult services	823340
(Adult duty, emergency)	534227
Children's services	525790
Local centres: Cowes	291144
Newport	823340
Ryde	566011
Sandown	408448
Headquarters	520600
Housing	823040

EMERGENCY NUMBERS

In an emergency dial 999

Fire and rescue control centre (24hrs) 525121

Out of hours:

Highways 525121

Waste disposal 0800 3283851

Wightcare 533772/821105 (out of hours)

All other council services 821105

FACE TO FACE SERVICES

Newport Help Centre

Tel: 821000

County Hall, Newport PO30 1UD
Mon to Fri: 8am to 6pm,
Sat: 9am to 1pm

Cowes Help Centre

Library, Beckford Road, Cowes
PO31 7SG

East Cowes Help Centre

Library, 11 York Avenue,
East Cowes PO32 6QY

Ryde Help Centre

Tel: 812678

Ryde Library, 101 George Street,
Ryde PO33 2JE

Sandown Help Centre

Council offices, Broadway,
Sandown PO36 9EA

Ventnor Help Centre

Ventnor Coastal Centre, Dudley
Road, Ventnor PO38 1EJ

West Wight Help Centre

Tel: 756140

Freshwater Library, 41 School
Green Road, Freshwater PO40 9AP

Wootton Bridge Help Centre

Tel: 884361

Joanne's Walk, Brannon Way,
Wootton Bridge PO33 4NX

Please ring 821000 to confirm opening times.

COUNCIL MEETINGS

Unless otherwise stated, all meetings are in public at County Hall. Call 823200 24 hours before a meeting to ensure it is going ahead and to check if any items are likely to be held in private session.

Council (council chamber)

21 April (6pm)

19 May (6pm)

Cabinet (committee room one)

30 March (6pm)

13 April (6pm)

11 May (6pm)

2 June (6pm)

Planning Committee

(council chamber)

23 March (4pm)

27 April (4pm)

25 May (4pm)

Licensing and General Purposes Committee

(committee room one)

26 April (4pm)

1 June (4pm)

Ethical Standards Committee

(committee room one)

12 April (6pm)

Overview and Scrutiny Committee

(committee room one)

15 April (6pm)

Adult Social Care, Health and Housing Scrutiny Panel

(committee room one)

13 May (6pm)

Children and Young People Scrutiny Panel

(committee room one)

12 May (6pm)

Environment, Transport and Infrastructure Scrutiny Panel

(committee room one)

22 March (6pm)

26 May (4pm)

Fire and Community Safety Scrutiny Panel

(committee room one)

5 May (4.30pm)



If you have community news to share with other readers, we would like to hear from you.

We also welcome your letters.

You can contact us by post, email or telephone.

Post

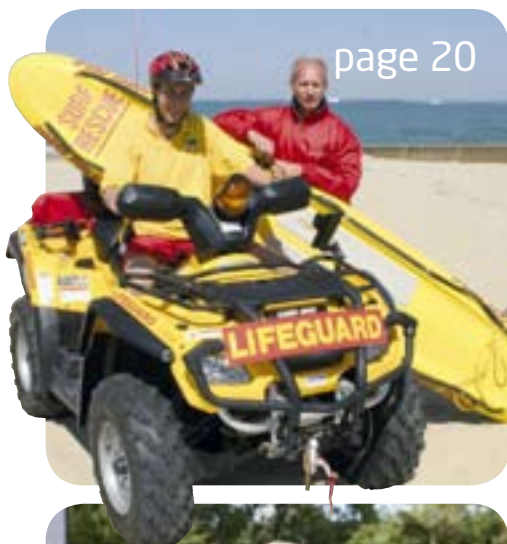
One Island,
Communications, County Hall, Newport PO30 1UD

Email

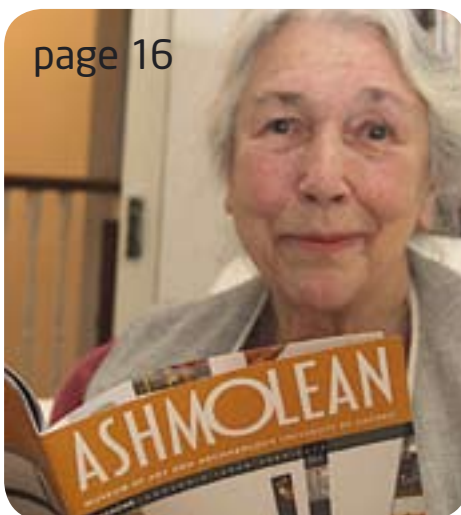
Onel Island@iow.gov.uk

Telephone 823105

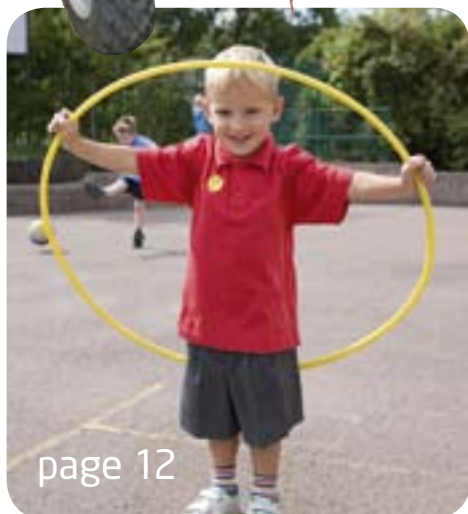
CONTENTS



page 20



page 16



page 12



page 19



page 17

This magazine is available on request as an audiotape, in large print, in Braille, in other languages and online at www.iwight.com. For further details, please contact One Island on 823105.

ONE ISLAND is published by the Isle of Wight Council. The council does not accept responsibility for goods or services offered by advertisers. Additional copies are available from the Customer Service Centre at County Hall, libraries and other council facilities. Typetalk calls welcome. Written, designed and produced by the Communications Department, Isle of Wight Council.

ISSN 1752-8038

© COPYRIGHT 2010

Isle of Wight Council,
County Hall, Newport,
Isle of Wight PO30 1UD.

Printed on paper from
sustainable sources by
Belmont Press.



- 4-11 **FIRST WORD**
Council and community news
- FEATURES**
- 12 **Budget 2010/2011**
Four-page special supplement
- 16 **More choice for Audrey**
Personal budget makes a difference
- 17 **All systems go**
Thumbs up for major highways' funding
- 18 **Voluntary sector news**
Rural community council round-up
- 20 **COAST AND COUNTRY**
Rural and coastal news
- 22 **NHS Isle of Wight**
Key public information
- 23 **TIME & PLACE**
Events and activities

One Island is a community magazine produced by the Isle of Wight Council with its key public sector partners – NHS Isle of Wight, Isle of Wight Police (Hampshire Constabulary) and the Isle of Wight Rural Community Council. Working together through the Island Strategic Partnership, we are striving to create an Island that is *safe and well kept; healthy and supportive; inspiring; and thriving.*



Getting ready to vote

The next few months are likely to be a key time for democracy on the Island.

There are planned elections due to be held on Thursday 6 May for the four parish and town councils at Newport, Northwood, Ryde and Whippingham.

These councils were formed in 2008, and after this year's elections their election timing will be the same as the Isle of Wight Council and all other parish and town councils on the Island.

A general election, meanwhile, must be called before early June this year; and if it is held on 6 May then legislation means the parish and town council elections must be postponed for three weeks until Thursday 27 May.



Registering to vote

If you wish to exercise your right to vote in local or general elections, you will need to be registered as an elector. If you returned your registration form last summer, then your name should be on the register – but you may check your entry by calling into County Hall, Newport, or telephoning 821000.

Poll cards and polling stations

There have been some minor changes to polling stations in some areas, and while poll cards will be issued for the general election around two weeks beforehand, poll cards may not be issued for the parish or town council elections, as this is at the discretion of those councils. Where poll cards are not issued, full details

of all polling stations will be available at www.iwight.com/elections2010

Postal or proxy votes

Electors who wish to apply for a postal or proxy vote will need to do so in good time. Depending upon the date of the actual election, the last date to apply for a postal vote is just over two weeks before the day of the poll, and the last date to apply for a proxy vote is around a week later.

Standing as a candidate

If you wish to stand as a candidate in any of these elections, full details, along with elector information will be available on the council's website at www.iwight.com/election2010



Fund raising cycle challenge

Island cyclists are being encouraged to take part in a 100 kilometre charity cycle ride for the British Heart Foundation this summer.

The off-road bike ride is one of a series of rides being staged nationally by the foundation.

The around the Island ride is being held on Saturday 19 June, and as well as the 100 kilometre challenge, there are rides of 75 kilometres and 50 kilometres.

For more information and to register for the rides, please visit bhf.org.uk/iowride or call 0808 1002109.

Remembering former chairman



A memorial service is to be held for former council chairman, John Effemey, at Newport Minster, Sts Thomas Square, Newport on Monday 22 March at 10.30am.

Anyone who would like to attend should notify the council on 821000. All attending will need to be seated by 10.15am.

Energy efficiency in historic buildings



The Island's historic and other old buildings may benefit from a new English Heritage study into energy efficiency.

The conservation section of the council's planning services is offering information about the study, which looks at the thermal performance of sash windows.

The study suggests that even the simplest repairs and basic improvements will bring major reductions in draughts and heat loss.

It is recommending: simple carpentry repairs to cracks and gaps, to cut draughts; draught proofing measures which can cut air infiltration by as much as 86 per cent; reducing heat loss by using thick curtains and roller blinds.

The National Trust has also been seeking to cut heat loss by using energy-efficient lighting in some of its buildings.

For more information on energy savings in old buildings, visit www.climatechangeandyourhome.co.uk

Cutting the carbon footprint in churches

A carbon management programme has been designed for the Church of England to make carbon footprint savings of 20 per cent in its churches and cathedrals.

The measures to help cut the footprint, include: adjusting time switches and thermostats; replacing inefficient boilers; improving or installing insulation and draught proofing; modernising lighting.

Energy saving information for churches, cathedrals, schools and clergy homes is available at www.shrinkingthefootprint.org

ADVERTISEMENT

New parking meters from May



A scheme to replace the Island's parking meters with new machines – both on street and in council-run car parks – is due to begin in May.

All locations will feature meters which will allow customers to pay by card as an alternative to change.

The new machines will also have enhanced security features.

Almost 150 new parking meters will be installed as part of the scheme, which should be completed by mid-summer.



Not on our Island

Crime going up? NOT ON OUR ISLAND



There were 1,303 fewer victims of crime on the Isle of Wight in 2009 compared to the previous year.



To report anti-social behaviour and neighbourhood issues, call 101. In an emergency, dial 999.





Three hundred walks - from ghost to coast!

ISLE OF WIGHT
2010
WALKING
FESTIVAL

There will be more than 300 different walks to choose from at this year's 12th annual Isle of Wight

Walking Festival.

The festival, from 8 to 23 May, features walks taking in many different interests, from

ghost walks and coastal walks to speed dating walks and history walks.

Details of all the walks can be found at www.isleofwightwalkingfestival.co.uk, with programmes available at tourist information centres.

An attraction for the intrepid will be a non-stop round the Island walk on Saturday 8 May, covering 72 miles over 24 hours. Booking for this walk is essential as numbers are limited, with the contact being Martin Neville on 07510 510163 (after 5pm).

Another highlight will be the Vectis Trail, from 17 to 21 May, a long distance figure of eight walk devised by two members of the Ramblers in the late 1980s.

On Friday 21 May, actor and adventurer Brian Blessed will be sharing stories of his career in a special one man show at Medina Theatre, Newport. Tickets for *An Evening with Brian Blessed, Actor, Author and Raconteur*, cost £17.50 (£15 concessions), and are available from the theatre box office on 527020 or online at www.medinatheatre.co.uk



Activities guide for Easter hols

Look out for the all-in-one guide to activities at council leisure centres during the Easter school holidays.

Copies will be sent to schools and will be available at leisure centres, libraries and tourist information centres.

The guide can also be downloaded from the council's iwight.com/leisure website.

Small grants to help community groups



Island organisations may qualify for a helping hand under the BBC Children in Need small grants programme.

Grants of £10,000 or less each year for three years are available to not for profit organisations making a positive difference to disadvantaged children.

Children in Need is looking for organisations which are at the heart of local communities.

For more information please visit bbc.co.uk/pudsey

ADVERTISEMENT

Where a University Degree in Business is not beyond your reach

Our part-time Business & Management Degree is designed for busy working people and is available once a week from Isle of Wight College and the University of Portsmouth.

It is open to those who may not have formal qualifications but whose work experience will have prepared them to succeed.

For further information visit

W port.ac.uk/busandman

E bus.admissions@port.ac.uk

T 023 9284 8200



www.port.ac.uk/pbs

Recognition for Ventnor boxers



Pictured (left to right): Stuart May, Danny Harper, Danny Green and Mark Bell

Young boxers at Ventnor are being encouraged with support from the Island's Crime and Disorder Reduction Partnership.

The partnership sponsored trophies presented recently at Ventnor Boxing Club's first tournament.

During the interval of the tournament at Ventnor Winter Gardens, Inspector Mark Bell, of the Hampshire Constabulary, and assistant chief fire officer Stuart May

presented trophies to the most improved junior boxer, Danny Green, and the most improved senior boxer, Danny Harper.

The Crime and Disorder Reduction Partnership comprises a group of agencies and services working to make communities safe. One of the main objectives of the partnership is youth engagement, and its link with Ventnor Boxing Club has been one of its successful recent initiatives.



New commission to monitor standards

From April this year new essential standards of care are being gradually introduced for all health and adult social care services in England.

A new, independent regulator of health and adult social care, called the Care Quality Commission, will be licensing and monitoring services to ensure they comply with the law.

NHS trusts will be the first services to come into the system, and from April for the first time, all NHS hospitals must be registered by law with the commission, in accordance with its essential standards.

More information on the work of the commission is available at www.cgc.org.uk

Make the most of online services

If you have access to the internet, you can carry out numerous transactions with the Isle of Wight Council, 24 hours a day, seven days a week.

The council's website at www.iwight.com has been specifically designed to bring a wide range of public service facilities online.

Recently, the three most frequently used online services have been highway defect reporting, black box recycling requests and job vacancies. In addition, iwight.com's planning facility allows you to submit and pay for planning applications, view current applications, track their status and view case documents.

Visitors to the site can view



the latest roadworks, find out about their local councillor, request a library book, discover what day their bins are being collected and pay for goods and services using electronic payment methods (debit or credit card).

You can pay for more than 60 services online, including: council tax, business rates, penalty charge notices, and copies of birth, death and marriage certificates.

ADVERTISEMENT



Not on our Island

Anti-Social Behaviour? NOT ON OUR ISLAND



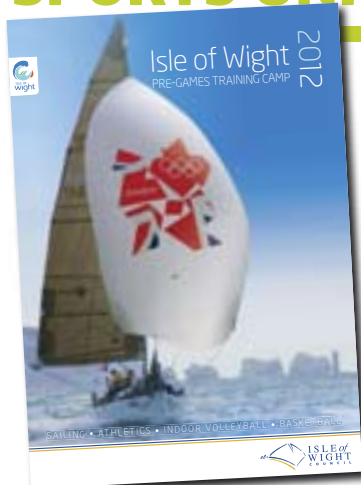
The number of anti-social behaviour reports recorded on the Isle of Wight in 2009 was reduced by 1,399 compared to the previous year.



To report anti-social behaviour and neighbourhood issues, call 101. In an emergency, dial 999.



SPORTS UNIT ROUND-UP



Island gets London 2012 seal of approval

The Isle of Wight has been approved by London 2012 organisers as an official pre-Olympic Games training camp for four different sports.

The sports involved are sailing, athletics, indoor volleyball and basketball, at facilities including Cowes Combined Sailing Clubs, Fairway Athletics Track at Sandown, and Medina Leisure Centre at Newport.

A brochure featuring the Island's facilities and accommodation can be found at www.iwight.com/living_here/sportsunit/events

New junior cycling club for Island youngsters



A new junior cycling club for the Island was launched at the end of February.

The Isle of Wight Junior Cycling Club has been formed through a partnership between the sports unit, Medina Leisure Centre and qualified cycling coach Gavin Sullivan.

The club will meet on a monthly basis for a variety of training skills, cycle skills, and racing.

The venue will be Medina Leisure Centre, Newport, between 1.30pm and 3.30pm, on the last Sunday of every month. Children aged eight to 13 are welcome and the cost is £1.

Those attending should bring their own bikes and helmet, and should be registered before taking part. Please contact the sports unit for more details.

Don't miss the Sport Relief Mile!

Sport Relief is back – and it's coming to the Island this weekend.

Ryde is set to host one of Sainsbury's Sport Relief Miles on Sunday 21 March, and needs local people to show their support by entering at www.sportrelief.com. The Isle of Wight Mile – organised by Appley Runners – sets off from Appley Tower, Ryde.

Local Organiser, Dave Furmidge, said: "There's something for everyone on the big day – whether you do one, three or six miles – and the money raised will help to transform lives of many people."

The first run starts at 10am and anyone wishing to take part is encouraged to sign up as soon as possible, via www.sportrelief.com/the-mile/ryde-appley-park-mile



Girls' football sessions launched

New girls-only football sessions on the Island have been set up at Carisbrooke, Newport, East Cowes, Ventnor, Ryde and in the West Wight.

The sessions, all led by a qualified coach, have been established in partnership with various Island youth football clubs and with the support of SportEngland.

All girls aged eight to 11 are welcome, with more information available at www.iwight.com/living_here/sportsunit/Get_Active or via the sports unit on 823818 (email: sports.unit@iow.gov.uk).

Junior squash and racketball club underway

Youngsters aged five to 13 are being encouraged to join the new Newport Junior Squash and Racketball Club.

The club – formed through a partnership between the sports unit, Carisbrooke Extended Schools and qualified squash coach Fleur Orchard – will be held every Saturday morning at Carisbrooke Squash Courts (Carisbrooke Sports Centre).

Three different sessions are available, dependent on age and ability, starting at 9.15am, 10am and 11am, and costing £3 per child.

Children must be registered before attending, by contacting Carol Ward on 550025, email: carolward@carisbrookehighschool.co.uk

Time to get running

Twenty-four new Run in England leaders have been successfully trained on the Island by UK Athletics, allowing them to create and lead their own running groups.

The informal groups will be accessible to everyone and a great place for people to start recreational running, particularly in groups.

For more information, you can visit www.iwight.com/living_here/sportsunit/Get_Active or contact the sports unit.

More information

For further details on any of the schemes mentioned here, please contact the sports unit on 823818 or email: sports.unit@iow.gov.uk



Alzheimer's Research Trust

until then she'd lived with my parents. Dad wasn't able to look after her and she went to live with carers."

Her father's condition deteriorated over a period of years and he became stubborn in refusing help from others. Social services where he lived helped with visits to a day centre, but eventually in 2007 he developed pneumonia and died, aged 83.

Joyce said: "I am aged 60 now and do worry at times what my fate will be. Research into Alzheimer's and other forms of dementia is vital and funding is essential. That's why my husband will be running in the Virgin London Marathon this spring to raise money for the Alzheimer's Research Trust."

If you would like to support David Taylor in his run you should contact Sharon Mansion at the Alzheimer's Research Trust, tel: 01223 843899, website: www.alzheimers-research.org.uk

Island man David Taylor from Cowes – a keen supporter with his wife of the Alzheimer's Research Trust – is hoping for fund raising support for his run in the Virgin London Marathon on 27 April.

The funds raised by David will go towards research into dementia, a condition which is estimated to affect more than 2,500 people on the Island and 820,000 throughout the UK.

His wife, Joyce, experienced the

heartbreak of her father gradually fading with dementia, and trying to care for him at some distance away.

Joyce said: "My parents lived in London and my dad, John, was about 77 when mum started to notice he was becoming forgetful, mislaying things and constantly looking for his glasses. Two years later, mum had a severe stroke and died. Dad went to pieces.

"When dad lost my mum, he lost my sister too. She has Down's syndrome and

From toe-tapping to haunting melodies

A fun mixture of music styles is coming to Ventnor Middle School next month, with a performance by Wild Willy Barrett's Sleeping Dogz (pictured).

The visit is part of the Island's Arts Away initiative, and the band will be playing music ranging from foot-

tapping Irish jigs to haunting melodies, using fiddle, banjo, guitar, cello and flute.

The show will take place on Sunday 18 April, 8pm start. Tickets cost £7 for the show and are available from Seasons Newsagents, Ventnor or the promoter, tel: 07841 713404.



ADVERTISEMENT



Not on our Island

Criminal Damage? NOT ON OUR ISLAND



Reports of criminal damage were reduced by 18% in 2009 compared to the previous year.



To report anti-social behaviour and neighbourhood issues, call 101. In an emergency, dial 999.



Thumbs up for community spirit

A survey for police has revealed that more than 98 per cent of residents in Gurnard feel safe, and they enjoy living in the village because of the strong sense of community spirit.

Police have thanked the residents for taking part in the survey, which has contributed to the community's priorities for 2010.

Acting Inspector Julie Cocks (pictured) said: "It was positive to note that so many of the people reported feeling safe in Gurnard."

Issues highlighted for attention in the 359 questionnaires that were returned, included: improving parking and reducing traffic congestion; dealing with speeding motorists; reducing dog fouling and associated problems with dogs roaming; increasing the frequency of bus services; and improving street lighting.

As a result of the findings, the Cowes Safer Neighbourhoods team is working with the roads policing unit to deter and detect speeding, and other issues are being looked at by the council.



Clearer signage for the revetment

New signs have been erected at the coastal revetment between Sandown and Shanklin, to give clearer information to users about safety issues.

The signs are part of a programme by the council to improve information for the various groups using the revetment and other locations – including beaches, promenades, bridleways and cycleways.

A leaflet is also being produced to help overcome difficulties between different user groups, as part of measures identified by the council in discussions with the groups and local town councils.

The leaflet will be distributed to schools, employers, public buildings, tourist information centres and the Safer Neighbourhood teams' network. It will also be supported with safety education materials on the road safety education trailer present at various events through the summer.



Refuse collection arrangements

Easter refuse collection arrangements

Refuse normally collected on:	Will be collected on:
Fri 2 April	Sat 3 April
Mon 5 April	Tues 6 April
Tues 6 April	Wed 7 April
Wed 7 April	Thur 8 April
Thur 8 April	Fri 9 April
Fri 9 April	Sat 10 April

May Day bank holiday refuse collection arrangements

Refuse normally collected on:	Will be collected on:
Mon 3 May	Tues 4 May
Tues 4 May	Wed 5 May
Wed 5 May	Thur 6 May
Thur 6 May	Fri 7 May
Fri 7 May	Sat 8 May

Spring bank holiday refuse collection arrangements

Refuse normally collected on:	Will be collected on:
Mon 31 May	Tues 1 June
Tues 1 June	Wed 2 June
Wed 2 June	Thur 3 June
Thur 3 June	Fri 4 June
Fri 4 June	Sat 5 June

Recycling services for the kitchen waste bucket and the kerbside recycling box will change in line with the dates given above.

Remember that the recycling box is a fortnightly collection and must be kerbside by 7am. If you are not sure of your week of collection please use the contact details below.

Isle of Wight Council

tel: 823777

website: www.iwight.com/waste

Island Waste Services

tel: 821234

website:

www.islandwaste.co.uk

Making better use of our rubbish

The Island's resource recovery facility at Newport is playing a key role in reducing the amount of waste going to landfill.

The facility in Forest Road converts all the cardboard, paper, junk mail and plastic in our rubbish sacks into bales of floc fuel, which are then used to generate energy at the neighbouring state-of-the-art gasification plant.

The plant produces a gas used to generate two megawatts of electricity, enough to power 3,000 Island homes.

The resource recovery facility can also extract all metal items left in your refuse sack – so food tins, aerosols, old pots and pans and assorted other metals are extracted and recycled.

While all this is happening there is also the Island's fortnightly kerbside recycling service, which collects glass* bottles and jars, newspapers and textiles, and a weekly collection for kitchen food waste.

** Please ensure your glass is placed in your black box. It cannot be recovered from waste going to the resource recovery facility.*





Extra area for popular Play Ranger scheme

The successful Play Ranger project on the Island is due to extend to a fourth area in the next few months.

The scheme was launched in July last year to highlight the importance of play

opportunities for young people in public parks and open spaces.

The areas currently operating under the scheme are Pan (Newport), Lowtherville estate play area (Upper Ventnor) and

Preston Close play area (Ryde). The location of the new area is yet to be announced.

Since its launch, several thousand children, their parents and community members have become involved in the weekly sessions, offering structured play in local communities and schools.

The free sessions are mainly based outdoors, with the occasional use of community centres, and a wide variety of play activities.

The project has also introduced the I-Play Mobile, a fully accessible play and information technology mobile transport facility.

Play development officer, Carly Kennen, and play ranger, Sophie Biggs, are available to provide more information about the project, and can be contacted by calling 823818 or emailing carly.kennen@iow.gov.uk or sophie.biggs@iow.gov.uk

The Play Rangers also organise and run National Play Day, an event celebrated nationally to promote the importance of play to families and communities. Last year the event was run at Pan and more than 800 people attended.

ADVERTISEMENT

Clearing the snow – 1881 fashion

How times change. This poster from the archives of the county record office may prompt comparisons between the snowfalls on the Island in early January this year and their precursors in January 1881.



A call for widespread community involvement was the order of the day to clear the snow in Newport in the freeze of 120 years ago – no gritting lorries or snowploughs in those days.

A public appeal by the mayor urged all householders and others in Newport to do their bit to tackle the snow – especially calling for the loan of horses and carts.

A public appeal by the mayor urged all householders and others in Newport to do their bit to tackle the snow – especially calling for the loan of horses and carts.



Not on our Island

Burglary? NOT ON OUR ISLAND



The number of house burglaries reported on the Isle of Wight has gone down by 40% during the past five years.



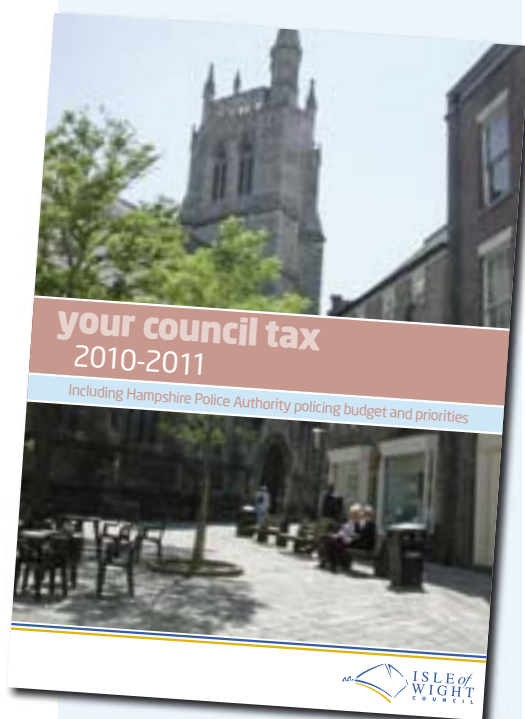
To report anti-social behaviour and neighbourhood issues, call 101. In an emergency, dial 999.



This four-page budget special gives you a flavour of how and where the council will direct its funds in the year ahead and what it means in terms of your council tax.

On this page we explain how you have helped shape our plans, and opposite and overleaf how we are responding positively to your views through key investment projects.

Then on the final two pages we explain spending and council tax details for 2010/2011



BUDGET

At the end of February the council agreed a budget of **£340.8 million** for the year ahead – with a council tax increase of **2.5 per cent**.

This year a number of factors have combined to put the council under increased financial pressure, resulting in the need to find savings of close to £12 million in the budget.

The key factors have included:

- the difficult economic climate, which has seen council income and the value of its assets drop;
- the ongoing pressure of the national concessionary bus fare scheme;
- a rising social care demand;
- the Island losing out in the way the government allocates money to some councils, through a process called damping.

The figure raised by council tax from Island householders represents about one fifth of the overall budget, with the rest from government grants specific to areas such as education, formula grant, income generation and area-based grant.

In setting its budget for 2010/2011, the council has sought to allocate money in those areas for which it has a statutory responsibility and also on those identified as priorities.

The priorities have been set following consultation with residents and with other groups and organisations, representing all sections of the community. These have included: trade unions; disability groups; the Isle of Wight Chamber of Commerce, Tourism and Industry; Older Voices and the Isle of Wight Youth Council.

Additionally, the views of more than 1,100 Island residents were canvassed during the annual residents' survey late in 2009 (*featured in the January issue of One Island*).

As a result of the feedback this year and previously, the council is looking to invest significantly in seven key areas affecting all sections of the community.

Schools' reorganisation



Our aim is for all young people to have full access to education and give them the best chance to achieve their potential.

It is felt the change to a two-tier school system provides the best chance for this to happen and to ensure they can progress successfully to employment, training and further/higher education.

The first stage of the change to the new system will be implemented with effect from September 2010.

So this can happen significant investment needs to be made in altering and improving school sites and school buildings across the Island, and this will contribute to wider economic growth on the Island over the coming years.

SPECIAL

Improving our fire service



We have already created 17 new full-time firefighter jobs, and through our modernisation programme will continue to increase our full-time strength, while reducing retained part-time levels.

These changes will also help us to improve our role in fire prevention and dealing with road traffic accidents.

We will also be able to commit to more preventive activities supporting older people to live in their own homes, and provide courses for young people beyond their school curriculum.

The ongoing modernisation programme means we can secure more investment and use our firefighters and fire stations more appropriately to meet the needs of the community. Our fire stations will be located in the right place and will provide the right level of fire cover.

Highways' private finance initiative



Recent surveys have shown the condition of our roads continue to be one of the top concerns for Island residents.

To tackle this we have been pursuing a major government grant linked to a private finance initiative (PFI).

It has just been announced (see *feature on page 17*) that we are one of three councils in the UK to successfully attract such funding – in our case an investment of £364 million.

This means we will be able to have

every stretch of the Island's highways' network improved and maintained for many years to come.

There will now be a huge amount of complex preparatory work to make sure the PFI scheme meets its full potential and brings maximum benefit to the Island.

In the meantime, the council will continue to invest in roads, pavements, footpaths and cycle routes across the Island, and continue to improve the Island's public realm.

Transforming social care



Transforming social care is an entirely new approach to the delivery of social care for adults. It is about supporting people to make the right decisions about their own care.

One of the main objectives is to give greater choice to the most vulnerable in our community, and to improve opportunities to live independently, where possible. We have already led the way nationally through our free home care scheme for the over 80s – with more than 800 people now making use of the service.

The central part of the new approach is the provision of a personal budget to people who have a support need, allowing them to manage the provision of their own care (see *feature page 16*).

We are also working with the Isle of Wight NHS to tailor health and social care packages to patients' individual needs, and to provide a wider range of support for those with learning and physical disabilities.

In total, £59 million is being invested in care and support for those who are most vulnerable. These changes include the introduction of personalised budgets – putting more choice in the hands of people receiving care.

Local housing



The Pan Urban Regeneration project, creating 850 new homes on the outskirts of Newport, will provide physical and social improvements for the area through new sustainable housing. Additionally, there will be employment opportunities, and the scheme will be integrated with the current estate to offer improvements for the whole community.

Meanwhile, we have helped to generate nearly 370 affordable homes on the Island recently – 110 more than our target.

In the last year we have also made excellent progress on the homelessness agenda, reducing the number of people housed in temporary accommodation, and helping bring empty homes back into use.

Regeneration and economic development



We are committed to supporting the Island as a centre for excellence in the development and production of renewable technologies.

Since the *Isle of Wight Economic Strategy (2008 to 2020)* was adopted, the recession and rapidly changing global economy means we have to rethink what is needed to ensure our economy can continue to prosper.

We have recently commissioned a refreshed version of the strategy to be in place by March 2010, with commitment to: renewable energy schemes; promoting the Island as an accessible and affordable tourist destination; promoting Island produced goods; encouraging Island firms to bid for public sector work; and supporting automatic business relief for firms.

Delivering better services



We are saving money through measures to make our own operations as efficient and cost-effective as possible.

This programme includes switching to new systems and operating from fewer premises. It is estimated this project should achieve annual net savings of £10 million from 2012/2013.

Major improvements in the way we do business are expected, including:

- reduced costs through fewer buildings and less staff;
- a reduction in bureaucracy;
- more flexible use of assets and resources;
- more accessible council locations, and co-location with partner agencies;
- increased value for money.

Your council tax

Your council tax increase for 2010/2011 has been set at **2.5 per cent**.

Here we explain:

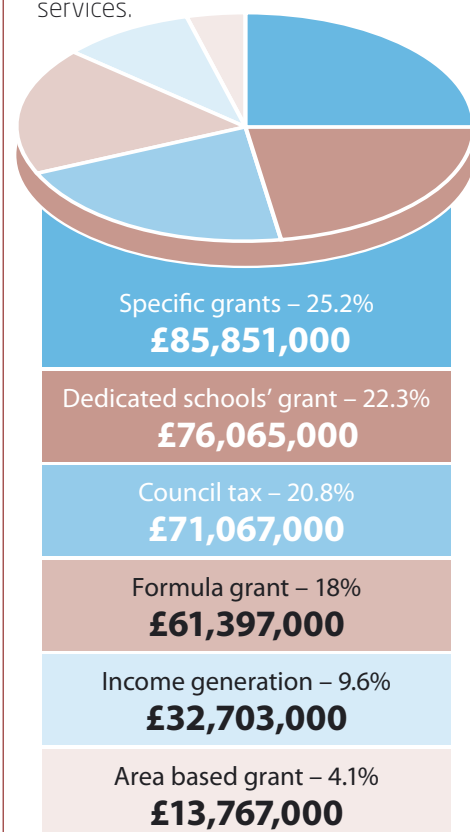
- where the council's money comes from and how your council tax contributes to our overall funding (alongside government grants, income generation and use of balances);
- where we will spend our funds in 2010/2011;
- the major factors that affect what you pay;
- what the council tax for your particular property band is.

We also show the contribution towards your parish or town area and the element relating to the Hampshire Police Authority.

Where the money comes from

The money the council uses to provide services comes from sources including:

- formula grant from the government;
- the council tax;
- grants for specific services and projects;
- area based grant (a non service-specific grant);
- income from charging for certain services.



Where the money will go in 2010/2011

	This year £'000	Last year £'000
Adult social services	59,330	57,077
Housing services ¹	65,738	65,592
Schools' budgets	97,429	97,172
Children's services	35,115	35,301
Fire service	7,495	7,192
Environmental services	2,278	2,606
Community safety	5,138	5,235
Street and beach cleansing	1,994	1,786
Waste management	8,443	8,188
Highways (including Private Finance Initiative (PFI))	9,078	7,775
Car parking ²	2,288	2,374
Street lighting	837	702
Public transport support	7,029	7,108
Planning and development control	4,012	4,284
Recreation and sport	5,861	5,317
Parks and open spaces	2,770	2,742
Economic and tourism development	2,314	2,485
Cultural, leisure and libraries	5,092	5,762
Other services	10,403	10,452
Other financing	8,206	6,972
Gross expenditure	340,850	336,122
Less grants and other income	-132,321	-129,448
Budget requirement including schools	208,529	206,674

¹The housing services figure includes housing benefits expenditure for which government subsidy (included with specific grants and other income) is received.

²The car parking figure represents expenditure on the service; income is included in the line with grants and other income.

Four factors that affect what you pay

1. The level of tax set by the Isle of Wight Council

The level of tax set by the council to cover the cost of services it will provide in 2010/2011 is 2.5 per cent higher than in 2009/2010, equivalent to 54p per week for a band C taxpayer.

2. The property band you are in

The value of your property, on 1 April 1991, will have been assessed by the independent listing officer, a central government agent. Your property will then have been placed in one of eight bands – your bill will show which one.

Band	Value of property 1.4.1991	Proportion of band D	Council tax (Isle of Wight Council element)
A	Up to £40,000	6/9	£859.87 (£716.56*)
B	£40,001 to £52,000	7/9	£1,003.18
C	£52,001 to £68,000	8/9	£1,146.49
D	£68,001 to £88,000	9/9	£1,289.80
E	£88,001 to £120,000	11/9	£1,576.42
F	£120,001 to £160,000	13/9	£1,863.04
G	£160,001 to £320,000	15/9	£2,149.67
H	Over £320,000	18/9	£2,579.60

*Disabled reduction

3. The level of spending set independently by the Hampshire Police Authority

The element of council tax that relates to the Hampshire Police Authority will rise by 2.9 per cent in 2010/2011, equivalent to 7p per week more for a band C taxpayer.

4. Charges for local services

Your bill includes an amount towards the cost of the town or parish council for the area in which you live.

Council, police, parishes and towns

This table shows the combined costs for a band D council tax payer. The figures include the Isle of Wight Council, the Hampshire Police Authority and the Island's town and parish councils.

	£ Per band D property	£ Total 2010- 2011	£ Total 2009- 2010
Isle of Wight Council	1,289.80	71,154,397	69,073,977
Hampshire Police Authority	146.25	8,068,174	7,800,773
Parish/town councils			
Arreton	16.57	6,520.00	5,460.00
Bembridge	47.01	97,000.00	97,000.00
Brading	54.01	45,500.00	43,250.00
Brighstone	19.52	16,596.00	15,690.00
Calbourne	23.45	9,339.00	9,339.00
Chale	30.43	8,600.00	8,800.00
Cowes	20.36	86,700.00	81,000.00
East Cowes	27.39	67,324.00	67,324.00
Fishbourne	18.29	7,638.00	7,638.00
Freshwater	23.83	60,945.00	59,847.00
Gatcombe	36.15	7,382.50	7,300.00
Godshill	23.67	14,500.00	14,500.00
Gurnard	39.80	32,000.00	28,000.00
Havenstreet and Ashey	24.27	8,600.00	8,600.00
Lake	12.98	25,000.00	25,000.00
Nettlestone and Seaview	17.33	29,540.00	24,015.00
Newchurch	9.99	11,000.00	10,300.00
Newport	15.94	127,257.00	127,247.50
Niton and Whitwell	12.35	12,200.00	12,200.00
Northwood	12.24	11,114.00	12,454.00
Rookley	24.15	6,130.00	5,951.00
Ryde	22.97	200,000.00	200,000.00
Sandown	38.40	100,450.00	98,000.00
Shalfleet	32.80	24,636.00	23,000.00
Shanklin	29.72	108,974.00	83,826.00
Shorwell	17.70	6,000.00	6,000.00
St Helens	21.84	12,500.00	10,000.00
Totland	25.03	33,846.00	33,846.00
Ventnor	54.21	149,466.00	99,500.00
Whippingham	30.63	10,750.00	7,460.00
Wootton Bridge	32.14	47,800.00	46,350.00
Wroxall	14.58	9,850.00	9,375.00
Yarmouth	34.79	18,471.00	18,471.00

More choice for Audrey

We look at how the council's personal budget scheme has brightened the life of Audrey Low from Ventnor



Audrey Low cherishes and guards the independence she is able to maintain at her seaside home near Steephill.

And determination and an independence of spirit are characteristics Audrey has in no short supply.

For 20 years Audrey managed and ran the shop at Oxford's world famous Ashmolean Museum, masterminding the range of books and other items to complement each new exhibition.

"It was the most marvellous of jobs, I loved every minute of it," said Audrey, who moved to the Island to be close to her daughter and grandchildren.

But just under two years ago, Audrey's natural mettle was put to the test when she

was struck down by a stroke.

She was in hospital for two months and when she returned home, carers were organised to visit every morning and help with personal care.

"They were very helpful and an occupational therapist even organised special handrails for me inside and outside my home," said Audrey.

"But I didn't feel that I really needed care every morning and so it was reduced to three mornings a week, with help for things like making the bed and taking a shower."

Audrey lost full mobility in her left arm and left leg as a result of her stroke, but valued being able to live in her own home, comforted by the presence of her daughter living a few miles away.

It was her daughter who suggested she consider applying for the council's personal budget scheme.

"My daughter said she had heard about personal budgets and thought it would be a good idea for me. She knew of someone at Newport who would be ideal as a regular carer. I thought this might be better than lots of different carers coming in, which had been the case," said Audrey.

Audrey's daughter brought her prospective new carer, Mel, around for a cup of coffee, and they hit it off straight away.

"Having a regular, dedicated carer in Mel, has made a real difference and has introduced a more relaxed and spontaneous approach to my care," said Audrey.

"There is less of a routine to it all, which particular suits me. With Mel I can sit down and have a cup of coffee and choose what I want to do. We might go for a walk to the

park, or along the esplanade.

"The extra variety it brings to my care has made a great difference. Mel comes in two or three times a week, for a total of about six hours. She assists with all kinds of things including some of the basic tasks I was being helped with before: such as putting clothes in the washing machine, hanging up clothes etc."

But Audrey said now her care is less structured, more akin to a visit from a friend who she can relax and have a chat with, or go outside and join for a walk.

Under the personal budget scheme, which she has been on since the start of January, Audrey has a dedicated bank account to receive the funds she then uses to pay Mel for her help.

"The scheme has given me more choice and personal independence when it comes to deciding my care. I'm very happy with how it has worked out."

Pilot scheme to help plan your support

Three organisations have been selected to work with the council on a six month pilot scheme giving vulnerable people more choice over their lives.

Age Concern Isle of Wight (in partnership with the Isle of Wight Advocacy Trust), the Isle of Wight Citizens' Advice Bureau and Help and Care will work with each other and the council's social care staff to offer information and advice on personal budgets and 'self-directed' support, as well as offering brokerage.

Through the scheme, vulnerable people, their families and carers will receive help from a broker to plan the support and services to meet the individual's care needs.

The pilot scheme will be used to help shape future services.

If you feel you could benefit from taking part in the scheme, please call 823653 or speak with your care manager.

ALL SYSTEMS GO *for major highways' revamp*

Government commitment has been given to the £364 million project to revitalise the Island's highways' network over the next 25 years...

Pictured: Harding Shute, near Ryde

The private finance initiative (PFI) scheme to comprehensively upgrade the Island's highway infrastructure has been assured of its funding.

The government has confirmed that it will allocate £364.6 million in grant funding to the project, having approved the outline business case.

It means the council can now move ahead with securing a commercial partner to undertake the massive engineering project.

Under the PFI scheme, all 499 miles (803 kilometres) of the Island's public road network will be rebuilt or resurfaced, as will every pavement, kerb and cycleway.

Most of this work will be done in the first seven years, and then the entire network will be maintained to a high standard over the remaining years of the 25-year project.

In addition, the scheme will cover all bridges and structures connected to the highways' network, such as retaining walls, and the replacement and maintenance of all traffic signals and the Island's 12,068 street lights and columns.

Also included will be all street furniture and illuminated bollards, as well as the CCTV network and control room, which may be upgraded to remotely operate

street lighting, both as a security and an energy saving measure.

The scheme will incorporate all verge cutting and weed control, street cleansing and gully and ditch clearance as well as maintenance of parking meters both on and off-street. It will include callout arrangements for fallen trees and flooding and the enforcement of notices for overhanging hedges and abandoned vehicles.

The project will also include the rebuilding of the Bouldnor Road at Yarmouth.

The council will retain several key functions besides the overall responsibility of making sure the work is carried out to the terms of the contract. These functions include road safety and education, road adoption issues, school crossing patrols and parking enforcement.

Stuart Love, strategic director for the economy and environment, said: "We know that residents want to see a dramatic improvement in the quality of our roads and the approval of the PFI grant means we will receive the necessary investment to make that real difference.

"Our task now is to make sure that we also use the PFI funding to achieve

as many spin-off benefits in terms of stimulating the local economy and enhancing job and career prospects for Island residents. The positive implications of this project for the wider Island economy are massive and we will continue to liaise with our partners in industry to maximise these."

Under the scheme, the council will be required to match the government investment to the tune of £8.3 million a year, which is about the same as it currently invests in the services that will come under the PFI.

Confirmation of the funding thumbs up follows months of discussions between government officials and the council's PFI team, during which the outline business case was refined.

The biggest change was the removal of most of the rights of way network from the PFI. This was mainly because responsibility for rights of way lies with the Department for the Environment, Food and Rural Affairs, while the PFI is the responsibility of the Department for Transport.

The council's PFI team is, however, currently working to integrate the upgrading of the rights of way network around the PFI activity.



Community Action Awards 2010



Volunteering, local achievement and self-help on the Island are once again set to be recognised in the annual Community Action Awards.

The competition aims to encourage and reward dedication in the voluntary sector, with projects judged on aspects including originality and efficient use of resources.

The Isle of Wight County Press is the overall sponsor of the awards, with further sponsors for the six categories: children and young people (Wightlink); environmental (Pan Neighbourhood Partnership); arts and heritage (Isle of Wight Rural Community Council); older people (Isle Care); local communities (Cemoc); sport (Wightlink).

The overall winning organisation will receive a prize of £1,500, with £500 to the runner-up, £250 to each of the category winners and £100 to the category runners-up.

To enter you should telephone the rural community council reception on 524058 for an application pack, or visit iwrcc.org.uk or the County Press website for a downloadable application form, or visit reception at the rural community council or County Press.

The closing date for entries is 5pm on Wednesday 5 May, with awards due to be presented by Lieutenant Colonel Sir Guy Acland, on 24 June.



Can you help Isle of Wight Victim Support?



Volunteers are needed to help Isle of Wight Victim Support – the local branch of the independent national charity which helps people cope with crime.

People are referred to Victim Support by the police and other organisations after a crime, and can receive free, confidential support and information from trained volunteers.

Victim Support aims to offer a comprehensive service to all sections of the community, and welcomes volunteers, who are given full training and reimbursed for out-of-pocket expenses.

To find out more, call 533688, or email: Emily.rose@victimsupport.org.uk

Special new teams to support local groups



Pictured: Samuel Claxon (right), the newest voluntary support team member, with Karl Dyson

A four-year project to benefit voluntary and community groups across the Island is gathering momentum.

The voluntary support team project, run by the rural community council, aims to create special teams to support local groups.

Team members will be trained to help groups run more effectively, provide business planning support, and assist with access to funding.

Voluntary support team member, Samuel Claxon, said: "The chance to gain experience and qualifications, while helping local groups and organisations, made becoming a member of this project an attractive option for me."

The project is funded by the Big Lottery Fund, and is expected to continue once the funding ends after four years.

To find out more about the project, and if you are interested in becoming a member of one of the teams, please contact Karl Dyson at the rural community council.



Online forum for volunteers

Pictured: A volunteer sells sunflowers on behalf of Earl Mountbatten Hospice at Walk the Wight

If you are involved with a voluntary or community group and have responsibility for co-ordinating volunteers then support is available from the Isle of Wight Volunteer Centre.

The centre operates an information exchange, called *VOICE Isle of Wight*, giving those who manage volunteers the

chance to share good practice, ideas and learn from each other.

VOICE stages networking events and training, as well as one-to-one support on recruiting and managing volunteers.

An online forum and good practice bank have been launched for volunteers, and there is also a newsletter for those

who don't have access to the internet.

For more information or to get involved with *VOICE*, please contact Helen in the volunteer centre on 539377, or email: volunteer@iwrcc.org.uk

You can apply to join the online forum by going to groups.google.com/groups/VOICE-iw

Course to broaden your skills

Members of voluntary groups who represent their organisations at a wider level are being invited to attend a training programme to broaden their skills.

The Skilling Up For Stronger Voices programme offers a one day course, which is being staged by the rural community council at its offices in Newport on 22 April, 9.30am to 2.30pm.

Places can be booked by calling Claire Tillman on 524058, or email: Claire.tillman@iwrcc.org.uk



It is open to those who are in a representative role, or those who may look to be taking up such a position.

Skilling Up for Stronger Voices has been developed by the National Association for Voluntary and Community Action.

Island pilot scheme for Shopmobility

Shopmobility, a charity which helps people with disabilities to get out to the shops, is seeking volunteers to run a pilot service on the Island.

Shopmobility schemes exist throughout the country and provide motorised scooters and other equipment for people with disabilities – temporary or permanent – to use in shopping centres.

Isle of Wight Shopmobility has recently been formed with the aim of providing a similar service for Islanders and visitors, and will run its pilot service from the old tourist information service office at Newport bus station.

As well as seeking volunteers to run the service, it is looking for people who have benefited from similar schemes elsewhere, and those who may be able to help with fund raising.

If you would like to know more, please call 533646 or drop a note through the mobility office letterbox.

Lifeguards – at your service



This year a full team of lifeguards will be keeping a watchful eye on beach users at Ryde, Sandown, Shanklin and Ventnor.

The council ensures that lifeguards are on duty at all four Blue Flag beaches every day from May to September.

The lifeguards are recruited following a tough process involving intensive training and a gruelling swim test. Each lifeguard station is equipped with a hut which houses specialist equipment, including rescue boards, first aid supplies and defibrillation units to save the lives of heart attack victims.

Every season the lifeguards are involved in high-profile incidents, and have regularly been credited with saving lives

at sea, often alongside inshore rescue volunteers and the coastguard.

The lifeguards also give information to visitors, patrol beaches to inspect life-saving equipment, offer first aid and assist with a perennial problem on every busy beach – lost children. They sometimes get called upon for some unusual tasks – last year they safely escorted council ecologist Anne Marston out to the very edge of the low tide to inspect some rare sea-grass.

Each beach with lifeguards has distinctive red and yellow flags to show the extent of the lifeguarded area – and visitors will be able to have access to emergency or non-emergency help and advice throughout the season.

Explore the coast and countryside this summer...

Look out for the new edition of Wight Summer Walks coming soon.

The leaflet lists a packed summer of countryside and coast walks and activities (2010 is also International Year of Biodiversity). There are many special events taking place including *Go Wild in the Woods* and the annual *Fort Victoria Foray* during the summer, as well as many walks led by the Island's conservation organisations.

The free booklet is available from late March onwards at public libraries, tourist information centres, help centres and as a download from www.iwight.com/walks



Seasonal guide to wildlife in your garden



With careful planning, mixed borders can bring year-round colour and wildlife to your garden. When selecting flowering plants, try to choose single petalled varieties. Hybrids with multiple layers of petals or blooms may look pretty, but are often of lower nectar and pollen value, and less beneficial to insects.

Go Wild on Wight photography exhibition

If you would like to see some stunning Island wildlife images, why not take in the exhibition of winning and shortlisted entries from the Isle of Wight Photographer of the Year 2009 competition?

The exhibition of the *It's a Very Small World: Go Wild on Wight* category can be seen at Freshwater Library throughout April – closed Thursdays and Sundays; then at Newport Minster Church throughout May – normally open Tuesday to Thursday and Saturday mornings.



NATURE NOTES

The glossy green foliage of Alexanders, a member of the carrot family, is becoming visible along the lanes and on coastal slopes. In the coming weeks, the yellowish green pungently scented flower heads will appear. They are a good source of nectar for insects on the wing early in the season. Later on they produce distinctive black ribbed seeds which will stay for most of the summer.

Alexanders (*pictured*) was probably introduced to Britain by the Romans. Its name comes from 'parsley of Alexandria' and it was grown as a pot-herb around the Mediterranean where it was used as a spring vegetable and tonic. Almost all parts had some culinary use, including the young flower buds which were pickled. The thicker parts of stems were cooked like celery but had a bitter taste, unless the stem was earthed up to prevent it turning green.



In the garden, look out for a robin close by when you are digging – it is probably after a juicy worm. Soil is one of our most precious natural resources and earthworms help to improve its condition by mixing and aerating it. They are great recyclers. They eat large amounts – up to 30 per cent of their body weight each day – of fresh or partially decomposed organic matter, and deposit nutrient rich worm casts throughout the soil.

Charles Darwin spent time researching earthworms and in 1881 published a book *The Formation of Vegetable Mould* through the action of worms, with observations on their habits. He quoted a Mr Henson, who had estimated that in garden soil there were more than 133,000 earthworms per hectare, which is more than 13 in every square metre!

A national survey of earthworms has been set up, and you can find details at the website www.opalexplornature.org. It aims to investigate links between soil type and condition and where earthworms are found, and to highlight the importance of soil quality for the living creatures within the soil.

Anne Marston, assistant ecology officer



Work is soon to get underway to improve the path through the council's popular Afton Marsh Local Nature Reserve in Freshwater.

Afton Marsh is home to some rare and interesting wildlife, with orchids and iris often seen in the woody glades, as well as many butterflies and in the summer a spectacular selection of dragonflies and damselflies.

Partly funded by the West Wight Landscape Partnership, the old footbridge will be replaced by a wider and safer one, and the low-lying path will be built up to reduce flooding.

The route is a very popular one for walkers who want to follow the river Yar from the old railway line down to Freshwater Bay, and is one of the few areas on the Island where there is public access to a freshwater wetland and reedbed.

Work by countryside rangers and volunteers over many years has kept the old bridge and path passable, but especially in the winter flooding has still made the tracks very difficult to use.

The new bridge will allow easier access, and the raised path will reduce the number of days when the path is flooded, although, being a marsh, there will still be times when it'll be best to wear your wellies!



iSpot wants your wildlife sightings

A new website is now available to help you identify and record wildlife species you spot while out on a walk.

The iSpot site also helps you learn about your finds and share your knowledge and observations with other people.

To find out more (and register), visit www.ispot.org.uk



Feeling unwell?

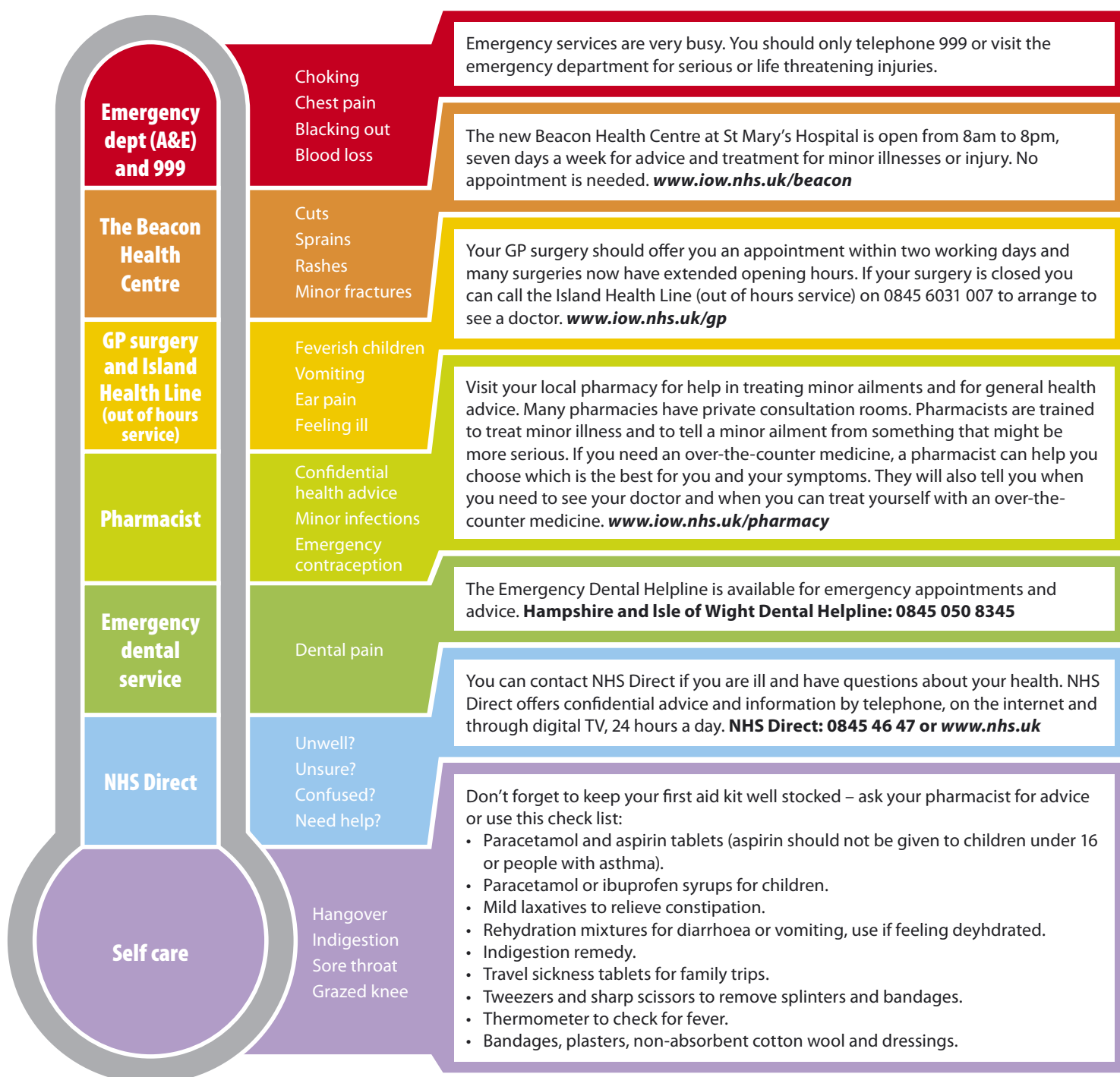
Remember to *choose well* this spring



Everyone wants to stay well if they can. With colds, coughs and infections doing the rounds and cold weather snaps this spring it's important that everyone on the Island knows how to get the right help, from the right place, at the right

time from the NHS. Use the thermometer below to help choose the service most appropriate to your needs. Remember your pharmacist can offer expert advice, NHS Direct is only a telephone call away and health advice can be found at

www.nhs.uk – an early enquiry can help prevent a crisis later. Choosing the right service helps to reduce the pressure on emergency services and ensure that they are available for those who really need them.



Join the patient panel



Island residents who would like to contribute to improving patient care and services are being invited to join the NHS patient panel.

The panel comprises people who are willing to be involved in the health service in various ways – perhaps as a patient representative on a committee, or through taking part in discussion groups or surveys.

If you would like more information, please contact Jo Cram, communications and engagement assistant, St Mary's Hospital, Newport, tel: 822099 (ext: 5703) or email: jo.cram@iow.nhs.uk

If you would prefer to be part of an independent monitoring body then the Local Involvement Network may be for you, tel: 0300 111 0102, email: isleofwightLINK@makesachange.org.uk, website: www.makesachange.org.uk

A Local Involvement Network (LINK) is a network of local people and groups who have joined forces to improve health and social care services by listening to the public. They are independent of the NHS.

The Isle of Wight's Dental Helpline and Emergency Dental Service



To find out more about receiving regular dental care with an NHS dentist or to receive urgent NHS dental care, check the website www.hampshiredentalhelpline.nhs.uk or contact the Dental Helpline on:

0845 050 8345

(Local call rate)

The helpline can help you to find a dentist offering regular NHS dental care, offer help & advice or an urgent appointment with an NHS dentist if you are in pain.

The service operates from 8.30am to 9.30pm, 7 days a week, 365 days a year.

NHS
Isle of Wight

TIME & PLACE

19 March to 3 June

ACTIVITIES

Free entry weekend (20-21 March)

Free entry weekend to Island National Trust properties, for more details tel: 741020.

Health walks (23 March)

Health walks from Sandown Library, starting at 9.45am from the library, with refreshments at a café en route, for details tel: 402748.

Island Storytellers on Tour (19 April)

Island storytellers visit Cowes for their monthly meeting, Jolliffe's Café,

Shooters Hill, Cowes, 7.30pm to 9.30pm, all welcome, contact Sue Bailey, tel: 241095.

Holy Trinity monthly lunch (20 April)

Lunch every third Tuesday for church funds/running, Holy Trinity Church, Dover Street, Ryde, from 12 noon, contact Lindsay Enggist, tel: 558567.

RNLI Cowes Guild, Call My Quaff (21 April)

Guessing the wine at wine tasting, with a welcome drink and champagne heads and tails game, Prospect House, High Street, Cowes, 7pm

for 7.30pm, contact Murray's Restaurant, tel: 296233.

Mosaic of Words Storytelling Festival (30 April – 2 May)

A weekend of storytelling performances, workshops and a competition, for all ages, Brading Roman Villa, Friday evening to Sunday tea time, contact Sue Bailey, tel: 241095.

Trinity Praise (30 May)

Service of hymns and praise on occasion of patronal festival, Holy Trinity Church, Cowes, 6.30pm, conducted

by Rev Tim Daykin of Radio Solent, for details please contact Mrs Elizabeth King, tel: 293304.

Mottistone Manor House open (31 May)

Open for one day a year only, 2pm to 5pm, normal admission charge to garden plus additional charge for house, guided tours for National Trust members only (9.30am to 12 noon), garden open as usual 11am to 5pm, tel: 741020.

Health walks (every Thursday)

A three-mile walk

with a short break en route, sturdy shoes recommended, few stiles and inclines, meet at bench at Lake Common off Lake Green Road, 10.15am for 10.30am start, contact Sylvia Doleman, tel: 401630.

EXHIBITIONS

Newbridge Village Archive (March)

Exhibition of old photographs and memories of Newbridge, Newbridge Community Centre, Tuesday to Thursday 10am to 1pm, open evening on Friday 26 March, 7.30pm to 10.30pm.

Turning Point, Andrew Dowden ceramic designs (27-28 March)

Solo exhibition of individually-designed, hand made and hand carved ceramics, including standing forms, wall plaques and tile panels, Echium Terrace Room, Ventnor Botanic Garden, 10am to 5pm, admission free.

At the end of a rainbow, 20th century Isle of Wight pottery exhibition (27-28 March)

An historical exhibition of Isle of Wight pottery in

the 20th century, including displays, photos, pieces from private collections and a slideshow, Canna Room, Ventnor Botanic Garden, 10am to 5pm, admission free.

Photographs by Walter Haberl (28 March – 28 April)

Exhibition at Newtown Old Town Hall, Sundays, Mondays and Wednesdays, 2pm to 5pm, admission charges apply, trust members free.

Two Artists in the Picture (31 March – 7 April)

Easter exhibition of recent paintings by Becky Samuelson and Kate Bolton, at Brading Roman Villa, 10am to 4pm daily.

Local views by Gordon Smith (2-31 May)

Exhibition at Newtown Old Town Hall, Sundays, Mondays and Wednesdays, 2pm to 5pm, admission charges apply, trust members free.

FAIRS & SHOWS

Antique and Collectors' Fayre (28 March)

More than 30 stalls selling antiques and collectables, ceramics, furniture, pictures, books etc, valuations by Island auction rooms, at Ventnor Winter Gardens, 10am to 3pm.

Spring Plant Sale, Brighstone and District Horticultural Society (15 May)

Spring plant sale, at Wilberforce Hall, Brighstone, 10am to 12 noon.

Isle of Wight Bonsai Society Show (29 May)

Display of members' trees, pruning and care demonstration,

Parish Rooms, Town Lane, Newport, 10am to 3pm, refreshments available, plants for sale.

MEETINGS

RNLI annual meeting (23 March)

Annual meeting, with a talk from Peter Morgan-Crockett on Trafalgar Revisited, afternoon tea to follow, Cowes Corinthian Yacht Club, 2.30pm.

West Wight Arts Association annual meeting (8 May)

Annual general meeting followed by a piano recital, cheese and wine, all members and friends invited to contribute £5 to defray costs, at Memorial Hall, Freshwater, 7.30pm.

Isle of Wight branch of the Royal Electrical and Mechanical Engineers (REME) (monthly)

Meets on the third Monday of each month, Newport Social Club (upstairs room), St James Street, 7.30pm, all ex-REME welcome, contact Len Wilby, tel: 403038, email: lensera@talktalk.net

MUSIC

Children's Society annual concert (20 March)

Entertainment by singers, dancers, magicians, fund raising for Children's Society charity, United Reformed church hall, Upton Road, Ryde, contact David Wright/Thelma Young, tel: 812476/564229.

Spring Blues 2010 (20 March)

Annual Spring Blues Festival, starring Big Joe Louis and his Blues Kings, Amen Boogie Blues Band and Damien Paul, Ventnor Winter

At the end of a rainbow – an exhibition of Isle of Wight pottery in the 20th century, at the Canna Room, Ventnor Botanic Garden on 27 and 28 March



Gardens, 7.30pm, tickets £12/£14, contact box office, tel: 857581.

Adam Walker and Sally Pryce (10 April)

West Wight Arts Association presents flautist Adam Walker and harpist Sally Pryce, performing J.S. Bach, Mozart, Rossini, Saint-Saens, William Alwyn's *Naiades Fantasy* and Piazzolla's *L'Histoire du Tango*, at Memorial Hall, Freshwater, 7.30pm, tickets available (within a fortnight of the event) from MacKenzie Arthur, Avenue Road, Freshwater, or tel: 752278.

TALKS

Talk and slideshow by David Ward (22 March)

Sandown/Shanklin and District Camera Club hosts the notable landscape photographer and writer, Landguard Manor, Shanklin, tickets £7.50, tel: 405817 for further details, or visit www.ssdcc.org.uk

Professor Christopher Wrigley, University of Nottingham, at Nodehill Middle School, Newport (Orchard Street entrance), 7.30pm, contact Terry Blunden, tel: 524410.

Cowes Heritage annual meeting and illustrated talk (27 April)

AGM of Cowes Heritage, at Northwood House, Cowes, 7pm, followed by an illustrated talk on the history of Northwood House and the Ward Estate, by Richard Smout, 7.30pm.

THEATRE

The Importance of Being Earnest (9-11 April)

Ventnor Theatre Group presents the play by Oscar Wilde, St Lawrence Village Hall, 7.30pm, tickets £5, tel:

854560 or 852313 for information.

70 Girls 70 (14-17 April)

Curtain Up Amateur Dramatic Society presents a musical comedy by Fred Ebb and John Kander, Memorial Hall, Freshwater, 7.30pm, tickets £6, contact Box office, tel: 752956.

Pull the Other One (15-17 April)

Comedy by Norman Robbins, presented by Bembridge Productions, Bembridge Village Hall, 7.30pm, tickets £6 from Lane End Newsagents.

Oliver! (27-30 May)

Ventnor Theatre Group presents the musical by Lionel Bart, Ventnor Winter Gardens, 7.30pm (plus a matinee at 2.30pm on 29 May), tickets £8.50 and £6.50 (for under 16s), contact box office, tel: 857581.

These listings are provided free, as a public information service. Details must be submitted either by: **filling out this form, or emailing your details to oneisland@iow.gov.uk**

Please conform to the format shown. Entries are included at the editorial team's discretion. Next scheduled edition: 21 May (listings for period 21 May to 30 July).

Title of event/activity:

Date:

Brief description:

Venue:

Time:

Contact name:

Telephone:

Please return (by 1 May) to:

Time & Place, One Island, Publications Unit, County Hall, Newport, Isle of Wight PO30 1UD or email to oneisland@iow.gov.uk

