

oneIsland

Your magazine from the
Isle of Wight Council

Issue five

May 2007

www.iwight.com

A million blooms!

Flower power
brightens the Island

Also inside:

Four-page Isle of Wight Festival guide

Special focus on West Wight



Welcome



Welcome to the May issue of the Isle of Wight Council's magazine, *One Island*, which this edition features a helpful guide to road closures and other arrangements for next month's Isle of Wight Festival at Seaclose.

We hope the event will proceed smoothly and provide enjoyment to the many Islanders and visitors attending.

In recent weeks the council has been debating the crucial issue of 14 to 19 education reorganisation, and if you turn to pages eight and nine we have provided an update on the latest position.

In this edition we also include special features on the Pan Neighbourhood Project and how the West Wight is represented through town and parish councils and at County Hall.

During the coming months we will continue to take a look at those projects you have identified as priorities and which we have pledged to support.

We remain determined in our quest to ensure Island residents will benefit from the high value services they deserve over the coming months and years.

Councillor Andy Sutton
Leader, Isle of Wight
Council

One Island is published each month, except for August/September and December/January, when there are combined editions. If you have community news to share with other readers or would like to advertise in *One Island*, we would like to hear from you.

We also welcome your letters – you can contact us by post, email or telephone.

Post One Island, Publications, County Hall, Newport PO30 1UD

Email Onelsland@iow.gov.uk

Telephone 823105



makingcontact

USEFUL CONTACTS

Isle of Wight Council, County Hall,
Newport PO30 1UD

Fax 823333

Email customer.services@iow.gov.uk

Website www.iwight.com

TELEPHONE SERVICES

Call centre 821000

Mon to Fri: 8am to 6pm

Saturday: 9am to 1pm

For telephone assistance we recommend you contact the call centre directly where we aim to answer as many enquiries as possible at this first point of contact.

Popular numbers

Council tax 823901

Education 823455

Environmental health 823000

Housing benefits 823950

Libraries 203880

Licensing 823159

Planning 823552

Refuse collection 823777

Roads and highways 823777

Tourism 813818

Trading standards 823396

Leisure services 823828

Adult and children's services

Adult services 520600

Children's services 525790

Local centres: Cowes 291144

Newport 823340

Ryde 566011

Sandown 408448

Headquarters 520600

Housing 823040

EMERGENCY NUMBERS

In an emergency dial 999

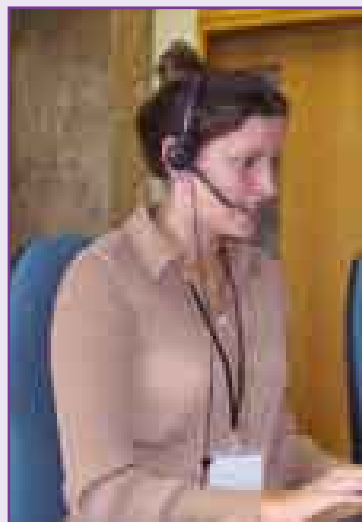
Fire and rescue
control centre (24hrs) 525121

Out of hours: 525121

Highways 0800 3283851

Waste disposal 821105

Wightcare 821105



FACE TO FACE SERVICES

Newport Help Centre

Tel 821000

County Hall, Newport PO30 1UD

Mon to Fri: 8am to 6pm

Sat: 9am to 1pm

Ryde Help Centre

Tel 812678

188 High Street, Ryde PO33 2PN

Mon to Fri: 8.45am to 5pm

Sat: 9.30am to 12.30pm

Brading Help Centre

Tel 405873

West Street, Brading PO36 0DR
IW Council desk – Tues: 9am to 1pm

Shanklin Help Centre

Falcon Cross Hall, Falcon Road, Shanklin

Mon only: 10am to 4.30pm

West Wight Information Centre

Tel 756140

Freshwater Library, School Green Road,
Freshwater PO40 9AP

Mon: 9am to 5.15pm,

Tues and Wed: 9.30am to 5.15pm,

Thur: (closed), Fri: 9.30am to

4.45pm. Closed for lunch (1.30pm to

2.30pm each day)

Wootton Bridge Centre

Tel 884361

Joanne's Walk, Brannon Way,

Wootton Bridge PO33 4NU

IW Council desk – Mon, Tues,

Thurs, Fri: 9am to 1pm

council meetings



Unless otherwise stated, all meetings are in public at County Hall. Call 821000 24 hours before a meeting to ensure it is going ahead and to check if any items are likely to be held in private session.

Council (council chamber)

20 June (6pm)

Cabinet

5 June, Yarmouth Primary School (6pm)

3 July, East Cowes Town Hall (6pm)

Planning Committee

(council chamber)

21 May (4pm)

26 June (4pm)

Licensing Sub-Committee

(committee room one)

22 May (4pm)

11 June (4pm)

Audit and Performance Committee

(committee room one)

21 June (6pm)

General Purposes Committee

(committee room one)

2 July (4pm)

Standards Committee

(committee room one)

21 May (6pm)

Scrutiny Committee

(committee room one)

12 June (6pm)

Policy Commission for Economy,

Tourism, Regeneration and

Transport (committee room one)

6 June (6pm)

Policy Commission for Care, Health

and Housing (committee room one)

23 May (6pm)

27 June (6pm)

Policy Commission for Children and

School Results (committee room one)

13 June (6pm)

4 July (6pm)

Policy Commission for Safer

Communities (committee room one)

7 June (6pm)

5 July (6pm)

In this issue

NEWS DESK

- 4-7** Council and community news

FEATURES

- 8** **The way ahead**
Schools reorganisation update
- 11** **Isle of Wight Festival 2007**
Four page guide
- 15** **Community pride**
Town managers' scheme
- 16** **Exciting times at Pan**
Spotlight on the Pathfinder scheme
- 18** **Representing the West Wight**
Special area focus
- 20** **Repaying their debt to society**
The *Unpaid Work* project

REGULARS

- 22** **Coast and country**
Rural and coastal news
- 24** **Trailers**
Events and activities

Cover picture: Parks and countryside manager, Matthew Chatfield, checks out the blooms by Newport police station



ONE ISLAND is published by the Isle of Wight Council. The council does not accept responsibility for goods or services offered by advertisers. Additional copies are available from the Customer Service Centre at County Hall, libraries and other council facilities. Typetalk calls welcome.

Written, designed and produced by the Publications Unit, Corporate Communications, Isle of Wight Council.

ISSN 1752-8038

© COPYRIGHT 2007

Isle of Wight Council,
County Hall, Newport,
Isle of Wight PO30 1UD.

Printed on environmentally friendly paper by Limehouse.



When you have finished with this magazine please pass it on or recycle it

Islandimage



Picture by: Ann Smith
Ryde Esplanade,
seaside sentinels

One Island is available on request as an audiotape, in large print, in Braille and in other languages.

For further details, please contact One Island on 823105. The magazine is also available online at www.iwight.com

One million blooms across the Island

Work to create dramatic floral displays across the Island is now well underway.

The *One Million Blooms* project is a council initiative using imaginative sustainable planting schemes to brighten up sites across the Island.

Work on one of three centrepiece designs – at Whippingham roundabout – is nearing completion. Two other roundabouts, St George's and St Mary's in Newport, will be

transformed around autumn time, ensuring that *One Million Blooms* brings year-round and not just seasonal benefits.

Besides the three main roundabouts, numerous other smaller schemes will be undertaken in the coming weeks and months. Many of these are the result of partnerships between the council and parish and town councils. Street furniture will also be spruced up around the sites.

A key to the project is using drought-resistant plants, so there is less demand of water resources during the drier summer months. The need to conserve water is another reason why the planting has been staggered throughout the year.

The scheme will be officially launched on 29 May when planting will begin on beds outside Newport police station at the bottom of the High Street. Council parks and countryside

manager, Matthew Chatfield, said: "Sometimes it might seem difficult to keep your garden green when water runs short, but we want to show not only that it's possible, but that it can look spectacular.

"*One Million Blooms* will demonstrate our commitment to sustainability at the same time as showing off our wonderful horticultural heritage for Islanders and visitors alike to enjoy."

Looking for new school governors



Have you ever thought "my local school could do something much better"? Are you looking for a challenge that allows you to put something back into your local community while making a positive contribution to education on the Isle of Wight? Do you want the satisfaction of knowing you are helping to make a difference to the education of the Island's youth? If so, why not apply to become a school governor?

School governors are there to ensure our schools are well run. They are volunteers who have input on many areas involving the school, including policies, how the school budget will be spent and the appointment and dismissal of staff. They are a vital part of the way schools are run.

To become a governor, you must be aged over 18, and should be available to attend meetings which are normally held at the school during late afternoons or evenings. Training and support is also available and you can choose the area of the Island and sector of school you want to become involved in.

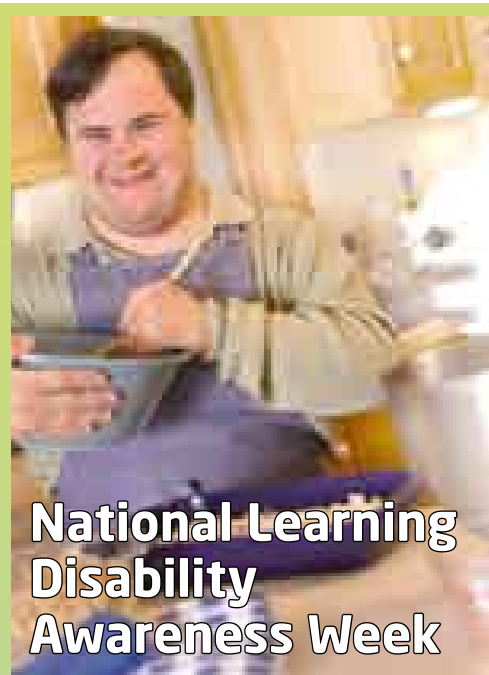
- If you are interested in becoming a school governor, you should contact the council's governor support service on 823458 or email: kirstie.ferris@iow.gov.uk

Alternatively you may download an application form from www.eduwight.iow.gov.uk/governor

Did you know?



In 2005/2006 the council provided 1,963 people with housing-related support through the Supporting People programme.



National Learning Disability Awareness Week

The council is working with Mencap Pathways and others to raise awareness of learning disabilities during *National Learning Disability Awareness Week*.

The week (18 to 22 June) will this year help highlight the bullying of people with a learning disability and how to keep safe.

The week will be launched with an information fair on 18 June at the Riverside Centre, Newport, featuring a healthy eating section where community chefs will show how to cook quick and healthy meals.

There will be exhibitors from a range of organisations and groups, including representatives from housing, transport and fire and rescue, as well as day centres and providers. There will also be members of the community learning disability nurses' team to offer advice and information on health, diet and sexual health.

Other activities during the week include:

- a sports hall athletics event organised by the Special Olympics where people can go along and try different sports at the Riverside Centre on Tuesday 19 June.
- a sponsored walk on Wednesday 20 June, with money raised going to the chemotherapy unit at St Mary's Hospital, Newport.
- a "Play in a Day" arts performance where people with a learning disability will spend a day preparing for an evening performance. The workshop will be held at Quay Arts on Friday 22 June;

These are just some of the events being organised. For a full programme please contact Vicky Jones on 520600 or vicky.jones@iow.gov.uk

Scheme celebrates milestone



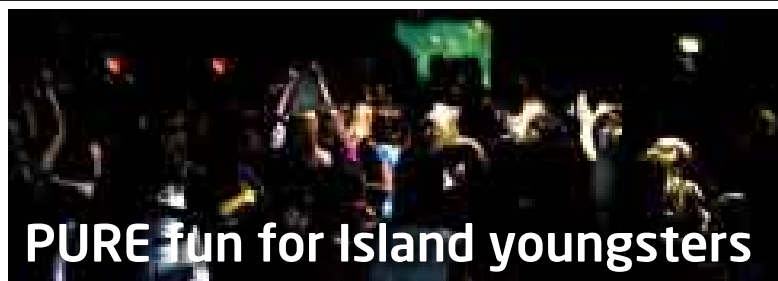
Steve Keetch and Steve Price of Sydenhams join Alison McCullum of Centrepiece Cake Designs to celebrate the *Buy With Confidence* scheme

The Isle of Wight Trading Standards Service has welcomed the 100th member, builders' merchant Sydenhams, to the *Buy With Confidence* scheme.

Twenty-five members of the scheme were presented with special certificates at a ceremony to mark the milestone at County Hall, Newport, and a celebratory cake, made by Centrepiece Cake Designs, was cut.

The *Buy With Confidence* scheme provides a list of approved traders, with membership open to any business on the Island after rigorous checks to ensure it operates fairly.

- A full list of members of the scheme is available at www.iwbuywithconfidence.info or by calling trading standards on 823370.



PURE fun for Island youngsters

Nights out aimed at providing the Island's under 18s with a mix of music and entertainment in a safe environment have proved a great success.

Pilot events were organised under the PURE initiative, which arose because young people said there was a gap in provision for those who were too old for youth clubs, but not old enough for pubs or clubs.

PURE was the brainchild of the council's Safer Neighbourhoods and Get Sorted teams.

The aim was to give youngsters a night out in a proper Island nightclub, rather than a hall or community centre, with the event being affordable and alcohol and drug free. The intention was also

to offer information (including about lifestyle choices and relationships) and activities using multi-media, film clips, interviews, real-life scenarios and music.

The first event was at Newport's Bar Bluu last year, with more than 250 youngsters turning up, and two more took place, at Temptation, Newport, attracting close to 400, and at The Balcony, Ryde, with more than 600 in attendance.

Due to the success of the pilot events several Island agencies are now working together to provide regular nights out for children and young people aged 13 to 18 years – with an emphasis on safety and education about issues such as alcohol, drugs and relationships.

Healthy living accolade for schools

Five Island schools have been awarded the *National Healthy School Standard*, under a scheme run by the Department of Health and the Department for Education and Skills.

They are Newport CE Primary, Gurnard Primary, Barton Primary, Summerfields Primary and Downside Middle.

The standard covers four key themes: personal, social, health education (PSHE) healthy eating; physical activity; emotional health and wellbeing.

To achieve the standard, the schools had to meet 41 criteria, including increasing the amount of pupils having school meals and developing a sustainable school travel plan.

Some of the benefits are already being seen at the schools, with Gurnard Primary reporting a rise of 62 per cent in the amount of children walking to school on designated days. Newport CE Primary has shown an increase in overall attendance.

All five establishments will receive an official certificate and plaque.



Calling all dog owners!

Do you own a dog? Are you a publican? Hotel owner? Event organiser? Or do you work for an Island attraction? If so, *iwight.com* needs your help!

With more than 500 miles of marked footpaths, a host of sandy beaches, lush green countryside, river valleys, wetland and woodland, the varied landscape of the Isle of Wight makes it a fantastic location for dogs.

We know that many of our Island residents are dog-owners and that a lot of visitors to the Island bring their canine friends over to experience everything our stunning terrain has to offer them. But where exactly on the Island are dogs allowed to go?

Iwight.com is planning to launch a new section that will provide dog owners with an at-a-glance summary of where their furry friends may or may not accompany them.

Our parks and beaches section already contains comprehensive information relating to dog prohibited beaches, but where do we stand when it comes to the many pubs, hotels, guest houses, cafés, attractions, and events across the Island?

If you are in the know when it comes to dog-friendly locations, please help us to compile what we believe will become a very useful resource, by sparing a few minutes to complete our online feedback form which is available via the homepage of *iwight.com*

Two Island schools achieve Grade 1 status

Two Island schools can be labelled "outstanding" after receiving Grade 1 ratings from the government schools' inspectorate, Ofsted.

Northwood Primary and Trinity Middle at Newport are the first Island schools to be given the top grade since Ofsted introduced a tougher new method of testing in 2005.

Trinity became the first Island middle school to gain a Grade 1, with inspectors describing it as "an outstanding school where pupils make excellent progress and standards are also outstanding". The staff were praised and the way they nurture the talents and skills of all pupils in the school and the community, was strongly highlighted.

Northwood became the first primary school on the Island to attain Grade 1. Inspectors said it was an "outstanding school" which is run under the "excellent and committed leadership of the acting headteacher Thelma Howland". She stepped into the role after the previous headteacher retired after 17 years. Pupils were also quoted in the report as saying "everything about the school is fantastic".

The council's cabinet member for education, Councillor Patrick Joyce, said: "These two reports clearly show the Isle of Wight can boast some of the best schools in the UK, and the Island itself should be very proud of that fact."

Did you know?

In 2005/2006 the council dealt with 780 applications for licences under the new Licensing Act.

Appointments for key council committees

At its annual meeting in April the council appointed the chairmen for the year ahead for its main committees and four policy commissions.

The policy commissions help develop policy initiatives and ideas for future consideration.



The chairmen are:

- **Scrutiny Committee:** Councillor Geoff Lumley
- **Audit and Performance Committee:** Councillor Anne Bishop
- **Standards Committee:** Mark Southwell
- **Planning Committee:** Councillor Ivan Bulwer
- **Licensing Committee:** Councillor Susan Scoccia
- **General Purposes Committee:** Councillor Lady Sarah Pigot
- **Investment Panel:** Councillor Colin West
- **Investigatory and Disciplinary Committee:** Councillor George Brown
- **Policy Commission for Safer Communities:** Councillor David Williams
- **Policy Commission for Children and School Results:** Councillor Gillian Kennett
- **Policy Commission for Economy, Tourism, Regeneration and Transport:** Councillor Jonathan Fitzgerald-Bond
- **Policy Commission for Care, Health and Housing:** Councillor Erica Oulton

Details of members of the council's cabinet, which has responsibility for the detailed day-to-day direction of the council's policies and operation, were given in the April issue of the magazine.

Island marks National Veterans' Day

The council is leading a special commemorative event to mark *National Veterans' Day* on Wednesday 27 June.

This year is the first time the Island has created an event of this kind to mark its thanks to veterans of all ages.

Anyone who has previously served in the armed forces is invited to attend the event, which will include a church service in Sts Thomas' Church, Newport; a march past and salute; and the presentation of veterans' badges.

If you would like to attend, please register your interest with your local branch of the Royal British Legion or telephone the Newport branch on 523288.



Lifesaving boost for Island beaches



Safety at Island beaches will be bolstered this summer with the arrival of a new lifeguard team and a rescue quad bike (*pictured*).

The council has invested in a new beach lifeguard team to patrol Ventnor Beach while the quad bike will become a rapid response vehicle for use at Ryde.

Both the lifeguard team and the new £5,000 quad bike will be on duty between May and September.

The new beach lifeguard team will join similar teams already operating in Sandown, Shanklin and Ryde.

They will operate from a new

£25,000-plus HQ between the Spyglass Inn and Lion's Rock Bandstand at Ventnor.

Providing lifeguards will help the council's aim of earning Ventnor a coveted Blue Flag award next year.

The three new lifeguards – as with all those employed by the council on its beaches – have been trained to the required standards by the Royal Life Saving Society.

The quad bike has been provided at cost price from Newbridge company Wight ATV while Hovertravel has agreed to meet the annual cost of maintaining the vehicle.

The quad bike will be used on Ryde Sands to counter the potential problem of people out on the sands at low water being cut off by the incoming tide. It will have a speed limited to 15mph to enable it to respond rapidly to emergencies while still operating at safe speeds on a crowded beach.

Accolade for work with parishes

International stage for youth MP

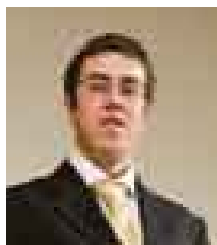
The Island's Youth MP Billy Jones (*pictured*) has been representing the UK at the World Youth Assembly on Road Safety in Switzerland.

Billy, who is also a member of the Island's youth council, was one of only two young people from the UK Youth Parliament chosen to represent the country at the conference at the Palais des Nations in Geneva at the end of April.

The event is modelled on the format of the UN General Assembly, attracting delegates from countries all over the world.

Delegates had the chance to hear road safety experts outline national and local road safety activities involving young people, and also take part in various working groups.

Billy said: "The event was an amazing experience for me. I feel it really helped me to make further steps towards improving the safety of drivers and others, not just here on the Island, but nationally. I will now take away the experience I have picked up from the event, and hope it will help improve my ability to represent the Island as its member of the UK Youth Parliament."



The council has been cited as top in the country for its work in making parish councils more effective.

A report commissioned by Defra and produced by the University of Wales on behalf of the government praised the council's efforts in the Quality Parish Scheme – a government initiative aiming to equip parish councils to take on a stronger role in their local communities.

The council has committed itself to an ambitious programme which aims to see all 29 of the Island's current parish councils become "Quality" parishes.

The level of Island parishes gaining quality status so far stands at 22 per cent – higher than any other local authority.

Only five areas on the Island are lacking parish councils at the moment: Ryde, Newport, Whippingham, Northwood and Carisbrooke, and all of these have now petitioned the secretary of state to establish a parish council.

Council managers are confident that the whole Island will have parish councils by April 2008 and are aiming for all parish councils to achieve "Quality" status by 2010.

Alison Lowton the interim director of legal and democratic services said: "Our parish team have made huge strides over the past 18 months in maximising the amount of democratic representation on the Island."

To become an accredited quality council, parish and town councils must pass a number of tests including: 80 per cent of members elected rather than co-opted, a qualified clerk, hold at least four meetings a year and provide evidence of engagement with their community.

The council's scheme of transferring more powers to parish councils has been praised as one of the key ways in which parish and town councils on the Island are being encouraged towards quality status.

To help devolve services the council has appointed a cabinet member for parish empowerment, created a parish and community development team, a parish devolution officer and a parish task group, organised surveys and workshops to improve working relationships between the two tiers, and developed a number of initiatives to encourage partnership working.

The way ahead

We explain last month's bold decision to reorganise education provision for 14 to 19-year-olds on the Island

"I passionately believe this is the right decision and the right way forward. I strongly feel within five years of the new structure being in place, the Isle of Wight will be within the top 20 per cent in the country for education, if not higher."

Patrick Joyce, cabinet member for schools leadership and governance

AT THE end of April, and after extensive public consultation, a crucial decision was taken to reorganise arrangements for the education of the Island's 14 to 19-year-olds.

At the heart of the decision has been the council's determination to significantly improve education standards for the Island's children.

A meeting of the full council discussed three main options that had been the subject of widespread public debate. A majority of councillors backed Option 2 and agreed to back plans to retain Year 9 in middle schools.

Details of these options were provided in the March edition of *One Island* and formed the basis of a series of public meetings and other consultations.

Option 2, what it means

- Option 2 will see education for 14 to 19-year-olds delivered at a number of centres across the Island. They will be run under a single leadership and a 'federation' with a 'superhead' overseeing everything.
- There will also be management teams, including pupils and parents at each site.
- The Isle of Wight College will remain separate.
- The set-up also means all 14 to 19 students will have a greater choice of subjects, and will mean the Island could offer the International Baccalaureate in future.

Year 9, how it will work

Councillors also backed plans to retain Year 9 in middle schools.

This will mean pupils will transfer to high school when they move into Year 10.

This arrangement will allow pupils to complete their Key Stage 3 coursework during their stay at middle school.

A number of concerns about the Year 9 proposals were raised during the consultation period over the plans. This included how schools will be expanded to take extra pupils, and younger pupils mixing with older children.

Council officers have now been charged to do further work and write an implementation plan on the Year 9 proposal and present a report by September, giving details of how the local authority will deal with the concerns.

The timetable and what happens next

It is planned the new set-up will start in September 2009, which means if you have a son or daughter currently in Year 6, they will be the first pupils to complete Year 9 in middle schools.

The council's director of children's services, Steve Beynon, said: "In one sense the real work now begins. We'll be speaking to all school staff, parents and pupils from all high and middle schools. We need to work towards a structured implementation plan ahead of statutory notices that will be sent to schools outlining the changes that will be made. That will happen within the next few months."

• Fact-finding

A trip to Leicestershire is being planned over the next two months to look at a similar education set-up to that planned for the Island.

Particular attention will be focused on Beauchamp College, a 14 to 19 years learning centre that has impressive exam results and serves more than 2,000 pupils. Officials from the Island will see how the college is run and what subjects are on offer.

• The Diploma

As the next phase of the plans to raise education standards on the Island, a new qualification is being developed, part of a national initiative. This is called the Diploma.

The Diploma opens up choices for young people, offers different ways of learning and also a route into higher education or employment. It is being developed with employers to provide young people with opportunities to promote a general understanding of a vocational area with real opportunities to practise skills.

There will be 14 Diplomas altogether, and over the next few years education and training providers on the Island will be working together to ensure all the Diplomas will be available to young people across the Island by 2013.

The Island has also successfully bid to offer the Creative and Media Diploma, which could be running as early as September 2009 – four years ahead of the government's target.

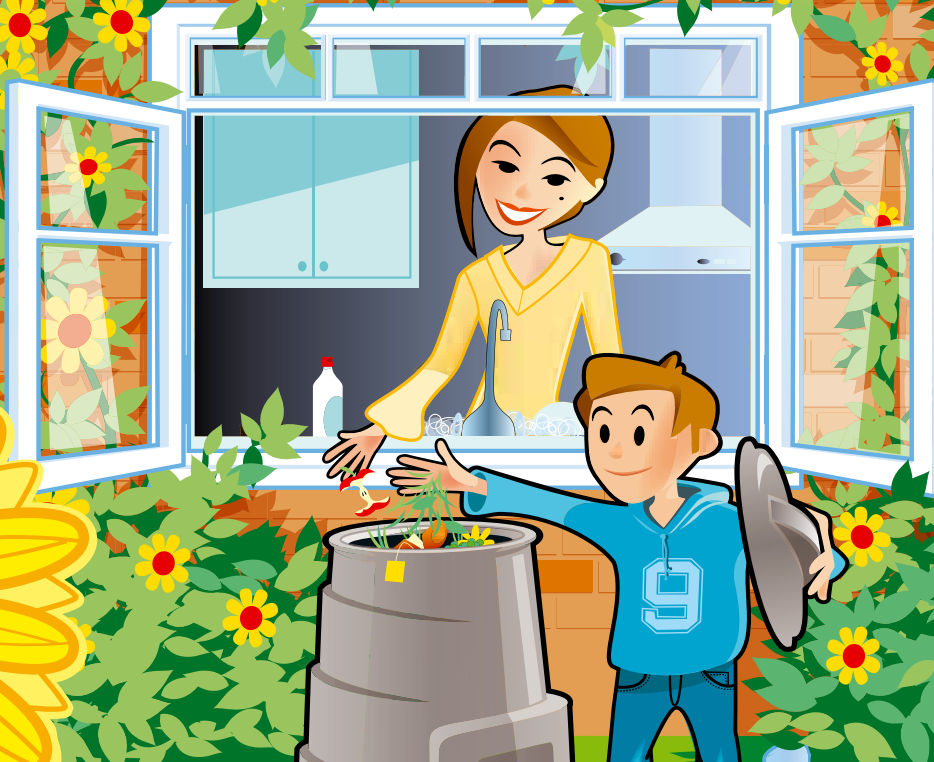
This will engage young people in an innovative and inspiring educational programme, linking with the emerging cultural industries on the Island and further raising educational standards.

More information

To keep in touch with the plans as they develop you can log onto www.eduwight.iow.gov.uk

Buy the bin that makes your garden more beautiful

FROM
**ONLY
£8**
PLUS FREE
DELIVERY



Buy a kitchen caddy for only £2 when you buy a bin*
Hurry and buy while stocks last

 **recycle**
compost at home

TO ORDER YOUR BIN CALL 0845 077 0757 quoting 12011
or visit us online at www.recyclenow.com/compost
ORDER ONLINE TO RECEIVE A FURTHER £1.00 OFF YOUR TOTAL ORDER



**Compost
Converter
(220ltr)**

£8.00

Manufacturer's
SRP £40.00
Height 90cm

QUANTITY



**Compost
Converter
(330ltr)**

£10.00

Manufacturer's
SRP £50.00
Height 100cm

QUANTITY



**KOMP
(250ltr)**

£20.00

Manufacturer's
SRP £59.85
Height 105cm

QUANTITY

NAME

ADDRESS

POSTCODE

DAYTIME TELEPHONE

I enclose a cheque/postal order for £ payable to DHL – Home Compost

Kitchen Caddy ☐ At reduced price of £2

Or please debit my Mastercard/Visa/Delta/Switch/Maestro account £ Start Date

Expiry Date

Card Number

Issue Number

Please return to: WRAP (Isle of Wight) Campaign, Freepost LS6334, Leeds LS14 1YY

CODE



From time to time WRAP (Waste & Resources Action Programme) and Isle of Wight Council may send you **FREE useful info, newsletters and tips & advice** to help make composting easy and fun. Please tick this box if you do not wish to receive these items ☐

If you prefer us to keep you informed by email please provide your email address

EMAIL:



Offer limited to 3 bins per household and to Isle of Wight residents only. Expect delivery within 28 days. If you wish to cancel your order before the bin is delivered or if the bin has been delivered and you wish to return it, please phone the customer care line on 0800 107 3798 within 7 working days. Offer is subject to availability and closes December 2007, though stocks of some bins are limited and may run out sooner than offer end. WRAP works in partnership to encourage and enable businesses and consumers to be more efficient in their use of materials and recycle more things more often. This helps minimise landfill, reduce carbon emissions and improve our environment. *One kitchen caddy per household with bin purchase, whilst stocks last. Actual colour may vary.

Isle of Wight Festival 2007

Your guide to enjoying the weekend

Friday 8 June

Snow Patrol

Groove Armada

The Feeling

Echo & the Bunnymen

Koopa

Saturday 9 June

Muse

Special guests: Kasabian

Ash

Wolfmother

Amy Winehouse

Donovan

Arno Carstens

Carbon/Silicon

The Thirst

The Menschen

Sunday 10 June

The Rolling Stones

Special guests: Keane

The Fratellis

Paolo Nutini

James Morrison

Melanie C

Country Joe McDonald

The Hedrons

In just three weeks the Isle of Wight Festival will be with us again. This handy guide provides at-a-glance information to help Island residents and visitors enjoy the internationally-renowned event.

Now in its sixth year, the festival is once again bringing world class acts to Seaclose Park at Newport – with this year The Rolling Stones headlining, returning to perform on the Island 43 years after they first appeared at Ryde Pavilion in 1964.

The Stones are the latest addition to a stellar line-up of performers who, since the revived festival began in 2002, have helped establish the Isle of Wight event as one of the best and most-loved on the UK festival circuit.

But the event is not just of cultural benefit to the Island – it is estimated the three-day concert boosts the IW economy by as much as £10 million a year.

The importance of the festival to the Island is recognised by the IW Council which is pleased to help Solo where it can to ensure the massive task of organising the event is as problem-free as possible.

IW Council leader Andy Sutton, said: "The Isle of Wight is justifiably proud of its festival which has the reputation as being one of the best and friendliest in the country.

"The council has worked hard this year with festival organisers Solo and with Southern Vectis to ensure the event runs smoothly, both for residents and for the tens of thousands of visitors who come to our Island for the three days.

"I wish everyone a happy festival and hope that the weather is as kind to us as it has been in previous years."

Traffic information and how to get to the festival

Newport one-way restriction (Fairlee Road)

Due to the number of people attending the festival a one-way restriction is necessary to accommodate a pedestrian only lane on the northbound carriageway of the A3054 Fairlee Road. The restriction will be between the entrance to the temporary bus terminal (next to the campsite at the access to North Fairlee Farm) and the junction of Staplers Road.

Due to the one-way restriction (in operation from approximately 10am, Thursday 7 June to early afternoon, Monday 11 June) all traffic travelling from Newport to East Cowes and Ryde, and from Newport to the festival campsite/main festival car park, will be diverted via Staplers Road, Whitetails Road and Station Road, to Wootton and A3054 High Street and Lushington Hill.

Possible delays

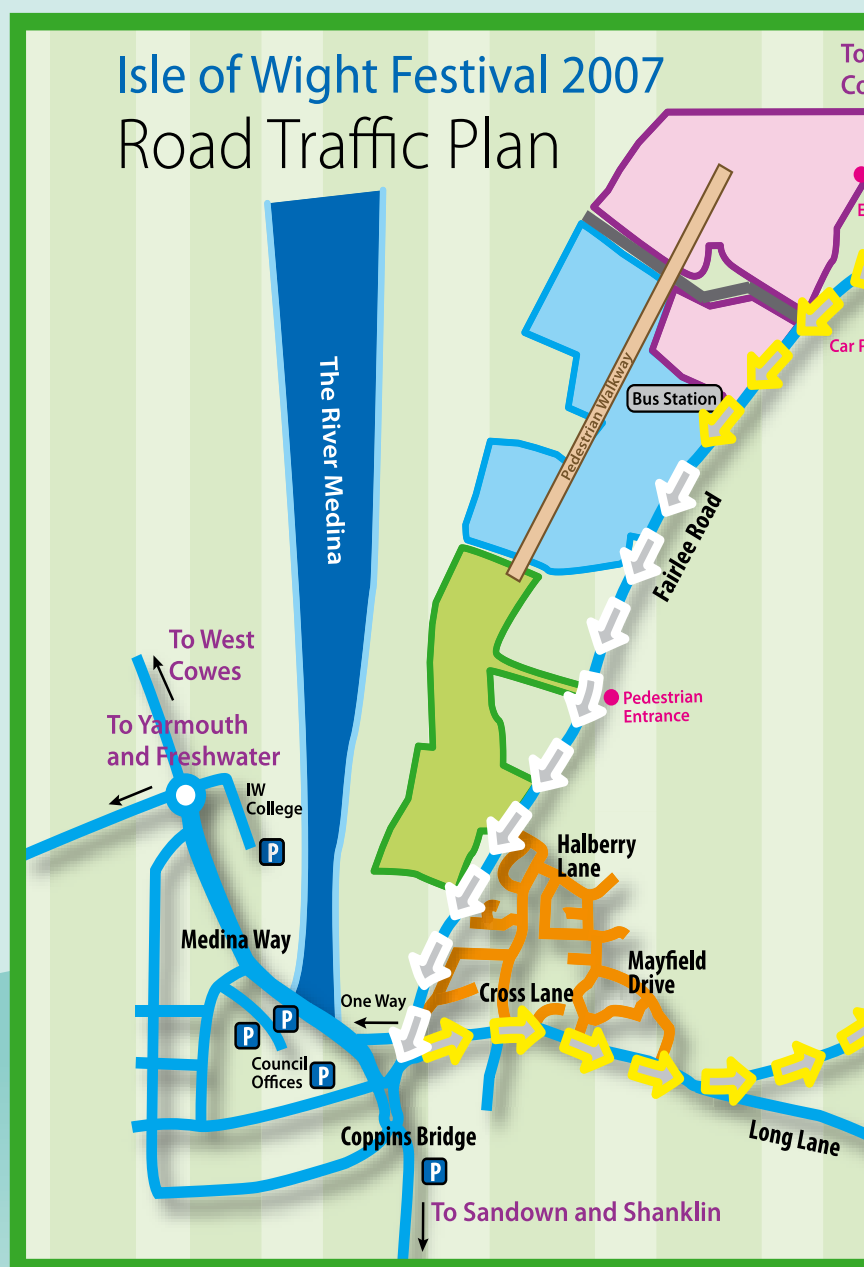
During the event there will be far more traffic in the Newport/Wootton area, meaning additional delays, especially at peak times.

Festival entrance

The entrance to the festival car park is off East Cowes Road, 300 metres on the East Cowes side of Racecourse roundabout. Event directions will be signposted.

Speed limits and parking restrictions (Racecourse, Fairlee Road)

For safety reasons and to minimise congestion, there will be a temporary 30mph speed limit and a 24 hour Highway Clearway Order (where no stopping/parking will be permitted on the road, in any lay-bys, on the footway or verge). The restrictions will be on Racecourse/Fairlee Road between Racecourse roundabout and the junction with Staplers Road from mid-morning on



Thursday 7 June to the afternoon of Monday 11 June.

Temporary late night road closures (Racecourse, Fairlee Road, Staplers Road)

With pedestrian safety in mind, it is planned to close the A3054 Racecourse and Fairlee Road to vehicular traffic in both directions between Racecourse roundabout and Staplers Road after the event finishes on each night:

- The road closure should be in operation from approximately:
 - 10.30pm to 12.15am on Friday 8 June (night)/Saturday 9 June (morning);
 - 11.30pm until 1.15am on

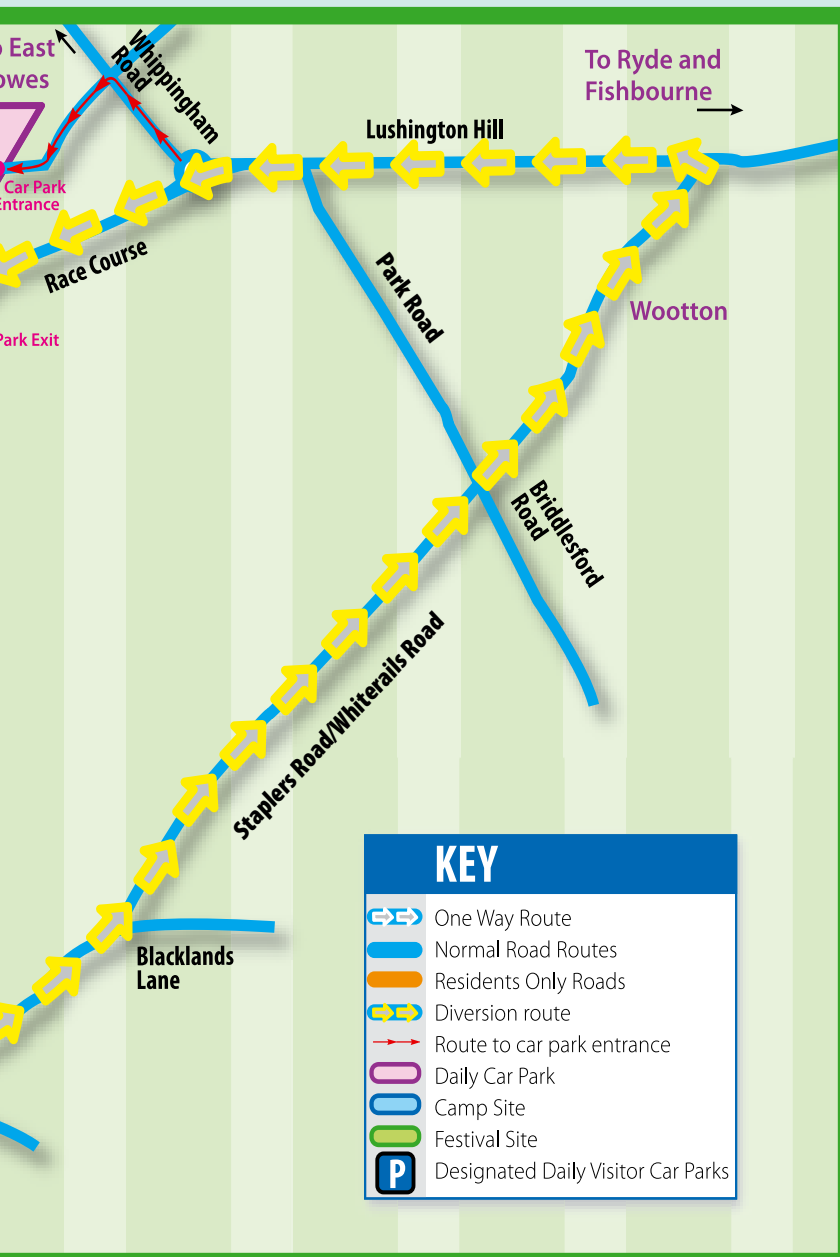
Saturday 9 June (night)/Sunday 10 (morning);

- 10.30pm until 12.15am on Sunday 10 June (night)/Monday 11 June (morning).
- These closure times may need to change if circumstances require.

Restricted access (Cross Lane/Halberry Lane area)

Between approximately mid-morning on Friday 8 June and early afternoon on Monday 11 June there will be restricted access to all the roads in the Halberry Lane/Cross Lane area. However residents and deliveries will be able to use the roads as normal.

During the period of the



restriction, vehicular access for residents and deliveries into all of the roads will only be possible from the A3054 Fairlee Road (into Halberry Lane), and from Staplers Road (into Cross Lane). Access will not be possible from Fairlee Road (into Victoria Road) and from Staplers Road (into Fairmount Drive or into Mayfield Drive).

Parking in the area will be for residents only and they will soon be receiving two permits for each household and also details of how to obtain additional permits.

Local residents

Residents who live at Island Harbour off Mill Lane and along the A3054 Fairlee Road from

Binfield corner and the entrance to the temporary bus station at the access to North Fairlee Farm, will be able to travel to and from their properties from the Racecourse roundabout direction when the closures occur.

Seaclose Park

To ensure the health and safety of the public during the staging of the festival at Seaclose Park, the park will be closed between Tuesday 29 May and Monday 18 June.

Footpaths

The footpath from Seaclose Park access road across Seaclose Park to Island Harbour Marina will be closed from Tuesday 29 May until Friday 15 June.

Promoter John Giddings (pictured) has plenty of reasons to ensure his IW Festival continues to be a success.

Not only is the promotion of successful international music events John's business, he has also developed a strong affinity for the Island and Island life. So, as long as there is a successful IW Festival held in the glare of the international media spotlight John is delighted from both a business and a personal prospective.

"I spend as much time here as I physically can - the Island is a place where I love to be," said John who juggles life between London and his home in Ryde.

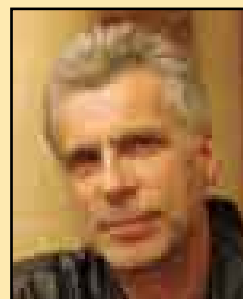
"I really enjoy the time I spend here. I am a patron of Dimbola and love walking in places like Carisbrooke Castle and along the beach at Ryde.

"There is no reason why, with all the technology available you cannot work when you are on the Island.

"In fact the environment here helps. I love to sit and stare out at the water in order to help me think things through."

John has also developed a strong working relationship with the IW Council on whose land at Seaclose, Newport, the June 8, 9 and 10 event is staged.

"I am very pleased the IW Council recognises the



picture courtesy of Isle of Wight County Press

importance of the event to the IW," he said.

"Together we are moving forward with the common aim of putting the IW on the international map.

"It is the start of a new era with the council. The people there have a new enthusiasm coupled with an accurate perception of just how important the event is to the Island in terms of its international stature and good publicity it brings.

"I think the issues we have had in the past will be just that - in the past. I am looking forward to working together with the council in the coming years."

With the festival now just weeks away, John is currently experiencing the customary mix of excitement and trepidation.

"You don't bring over a band like the Rolling Stones without a lot of hard work and that continues right up until the event itself. But of course it is a tremendous thing to have a band like the Stones playing on the Island."

And is this year's event the best line up ever?

"I seem to say that every year. I think the bill on each of the years has had an identity of its own and been a success in its own right," John said.

"In 2005 I did not really know too much about Faithless but after the amazing show they put on I became a fan."



Left: One of the 2007 Isle of Wight festival buses; and (far left) the Jimi Hendrix statue at Dimbola Lodge

The access road through Seaclose Park from Fairlee Road to Newport Quay will be closed to vehicles and pedestrians, and Footpath N120 from the Riverside Centre car park to Seaclose Park access road will be closed from the evening of Thursday 7 June until the morning of Monday 11 June.

Buses and taxis

Buses

For details on buses please see the Southern Vectis information on the following page.

Taxis

The taxi drop off and pick up point for the festival campsite is located off Mill Lane (the access road to Island Harbour) then turn left towards Newport across the grassed area to the event entrance.

Quay Street, Newport will be closed from the High Street to Sea Street from the early evening on Friday 8 June until the morning of Monday 11 June for a festival taxi rank for setting down and picking up.

Further information

For general highways information:

Isle of Wight Council, tel: (01983)

For bus information:

Southern Vectis, tel: (01983) 827000 (9am to 5pm, Monday to Friday).

For ferry information:

- Portsmouth to Ryde (passenger ferry), Portsmouth to Fishbourne (vehicle ferry), Lymington to Yarmouth (vehicle ferry):
Wightlink, tel: 0870 582 0202 www.wightlink.co.uk
- Southampton to Cowes (passenger ferry), Southampton to East Cowes (vehicle ferry):
Red Funnel, tel: 0870 444 8898 www.redfunnel.co.uk
- Southsea to Ryde (passenger hovercraft):
Hovertravel, tel: 01983 811000 www.hovertravel.co.uk



Getting to the festival

During the festival, Southern Vectis will be running special shuttle services and extra late buses on its normal routes to make it as easy as possible for visitors to get to the site.

From Ryde:

- *Wightlink Fastcat* from Portsmouth
- *Hovertravel hovercraft* from Southsea

In addition to regular route 9 buses between Ryde Esplanade and Newport, Southern Vectis will also be operating a festival shuttle, direct from Ryde Esplanade to the festival campsite.

From 8am on Thursday 7 June until 8pm on Friday 8 June there will be a bus to meet every incoming ferry including all overnight ferries to get visitors directly to the festival campsite.

From Fishbourne:

- *Wightlink ferry* from Portsmouth
From 8am on Thursday 7 June until 8pm on Friday 8 June there will be a festival shuttle to meet every incoming ferry (including all overnight ferries) to get visitors directly to the festival campsite.

From Yarmouth:

- *Wightlink ferry* from Lymington
From 8am on Thursday 7 June until 8pm on Friday 8 June there will be a festival shuttle to meet every incoming ferry including

all overnight ferries to get you directly to the festival campsite.

From Cowes:

- *Red Funnel Red Jet ferry* from Southampton
Southern Vectis route 1 buses between Cowes ferry terminal and Newport bus station meet every incoming ferry. From 8am on Thursday 7 June until 8pm on Friday 8 June there will be a connecting festival

shuttle between Newport bus station direct to the festival campsite.

From East Cowes:

- *Red Funnel ferry* from Southampton
In addition to Southern Vectis' route 5 buses from the East Cowes ferry, the company will also be operating a festival shuttle direct from East Cowes to the festival campsite.

From 8am on Thursday 7 June until 8pm on Friday 8 June there will be a bus to meet every incoming ferry (including all overnight ferries) to get visitors directly to the campsite.

Get out and about during the festival

The Newport shuttle runs between the festival campsite and Newport between 8am and 7pm on Thursday, Friday, Saturday and Sunday. From Newport you can connect with the rest of Southern Vectis' buses, which run all over the Island throughout the day.

Newport (travel time 15 minutes)
Newport is the Island's main town and retail centre. Close to the bus station are Somerfield, Morrisons and Marks and Spencer. There are also plenty of cafés and pubs in town.

Get there on the Newport Shuttle.

Wootton (travel time ten minutes)

Close to the festival site, but away from the traffic around Newport, Wootton has a Tesco Express, fish and chips shop, Indian and Chinese takeaways, chemist, and The Sloop Brewers Fayre and The Cedars pub.

Get there on the festival shuttle to the Ryde ferries.

Ryde (travel time 30 minutes)
Ryde features sandy beaches, a long esplanade and plenty of pubs and cafés and tenpin bowling alley and an ice rink on the seafront.

Get there on the festival shuttle to the Ryde ferries.

Leaving the festival

From the end of the festival on Sunday 10 June until midday on Monday 11 June, there will be return festival shuttles back to all ferry ports to connect with all departing ferries (including departures through the night).

Queues to get home can be long, but please be patient.

Still need help?

If you need further information email Southern Vectis on talk2us@islandbuses.info or call (01983) 827000 (9am to 5pm Monday to Friday).

Special ticket prices

• Festival Return - £5

This ticket is valid for a return journey between the festival and any location on the Island. It can be used if a change of buses is necessary. You can buy your ticket on any Southern Vectis bus on the Island as well as from the festival campsite and ferry ports.

• Newport Shuttle - £1

This ticket is valid for a single journey from Newport Bus Station to the festival campsite or from the festival back to Newport.

• Single journey - £3

This ticket is valid for a single journey from the festival to any Island town or ferry.

Bringing pride to your towns

Spotlight on the new town managers initiative

"We hope the town managers will help restore civic pride and confidence in communities across the Island."

Ian Ward, cabinet member for safer communities

ELEVEN NEW town centre managers will soon be on duty working to ensure communities across the Island are kept clean, well maintained and tidy.

The town manager initiative was outlined by the council earlier this year as part of its determination to improve the public realm.

Under the project, two town managers will be assigned to bring about improvements in Ryde and in Newport, while lone managers will be raising the street scene standards in Cowes, East Cowes, Sandown, Shanklin, Freshwater and Ventnor. A further town manager will act in a supervisory capacity.

A key role of the managers will be to ensure the various public realm contracts are carried out – that includes things like making sure all litter bins are emptied on time, highways maintained and pathways swept and cleaned to the required standard and that litter is picked up. They will work with shops and businesses to ensure all aspects of trading including planning, commercial waste disposal and shop front cleansing is being done in the right way.

They will also be the council's eyes and ears in town centres

and will report acts of anti-social behaviour including vandalism and graffiti so they can be quickly remedied.

In addition, the town managers will have some enforcement powers to issue fixed penalty tickets for offences like dropping litter, fly-tipping and fly-posting and allowing dogs to foul pavements. They will work closely with other officers to improve Island communities including the council's community support officers (CSOs) and our partners the police community support officers (PCSOs).

Town centre managers will also be expected to act as ambassadors for the council, communicating information to locals and visitors as well as providing expertise in relation to community problem solving. They will be provided with a distinctive uniform so they will be easily identified.

"We want managers who become quickly known throughout the town and who are approachable and trusted within the community," said Heather Lovell, the council's head of safer neighbourhoods partnership.

"While their over-riding aim will be to help encourage and

develop civic pride in the towns, we know that they will best be able to achieve that if they have

the whole-hearted support of the communities in which they serve."

Advertisement

2007 **the biggest and the best!** **BSO FIREWORK PROMS** **WIGHTlink**
Isle of Wight Ferries

BOOK BEFORE 21 JUNE
EARLYBIRD TICKETS ONLY £18

Last Night of the OSBORNE Proms

OSBORNE HOUSE
EAST COWES, ISLE OF WIGHT
SATURDAY 21 JULY 7.45PM
(GATES OPEN AT 6PM FOR PICNICS)

William Tell Overture The Nutcracker Fingal's Cave
Danse Macabre The Merry Widow Lohengrin

Plus music by Beethoven, Glinka, Fauré and all your "Last Night" British favourites.

TICKETS £18 EARLYBIRD (BEFORE 21 JUNE) £20 ADVANCE £23 ON THE DAY
BOOK NOW 01983 863151 08700 668701 0870 112 1812

TICKETS CAN ALSO BE PURCHASED IN PERSON FROM THE COUNTY PRESS SHOP AND IOW TICS OR BOOK ONLINE www.bsoLIVE.com

Bringing new zest to life in Pan

Community life has been revitalised in the Pan area of Newport over the past three years, thanks to the Pathfinder scheme and the work of the Pan Neighbourhood Partnership. Here we take a look at the initiative

Main picture: Getting ready to launch into the soapbox derby
Opposite: Phil Harding from Wessex Archaeology gives a flint knapping demonstration at the Isobel Centre

IN 2004 the Pan area of Newport was awarded government funding as part of a groundbreaking approach to creating community cohesion.

Pan was chosen as one of 35 Pathfinder areas nationally – a scheme aimed at improving community life by tackling key issues and empowering residents to influence services.

Since the Pan programme began the area has benefited from many innovative and highly successful projects – some of which may eventually be extended to other communities on the Island.

At the heart of the project has been the Pan Neighbourhood Partnership, comprising a management board and staff running the day-to-day operations.

The board and staff have developed many initiatives to benefit the local community, covering a wide range of issues, and with the interests of all ages in mind.

Community safety

One of the main issues of concern to locals has been community safety, with residents

experiencing a fear of crime, a lack of confidence in the police, and a heightened awareness of drug-related activity.

To help overcome these worries, the partnership has developed a strong working relationship with the police and the Island's Safer Neighbourhoods team, helping build bridges and tackle the areas of concern.

Young people

Another priority highlighted by residents has been the lack of activities and facilities for younger people.

Progress is currently being made in this area, with both funding and a potential site, Downside Middle School, being earmarked to provide new facilities for teenagers and young people, possibly within 12 months.

To help compensate for the lack of facilities, the partnership has helped support a diverse range of events and activities for young people, including; the Downside Extended School, the Barton Early Years Centre, and other projects involving the police and youth workers.

About the partnership

Pan Neighbourhood Partnership is based at Langley Court, Pyle Street, Newport, and encourages residents to come in and discuss any issues or concerns they have. These can then be passed onto any relevant person or agency, such as the community wardens, ground workers, and housing association.

The partnership management board, which makes key decisions on how funding is spent, is made up of elected resident members, service providers, the local councillor and local community group representatives.

The partnership staff run the day-to-day operations and provide advice and guidance for the board.

The Isle of Wight Council is the accountable body for the Pathfinder scheme, to ensure the partnership works within legal guidelines.

Other projects (*featured in the panel below*) have included: Discovering Pan – investigating the archaeology of Pan; carnival activities and the Pan lantern parade; the Soapbox Derby Challenge; a summer activities programme; and the Pan countryside ranger.

Image problems

One of the biggest issues for Pan has been its perceived image, with a survey in 2004 indicating that the area was viewed

negatively by other Islanders.

The accuracy of these perceptions has been regularly challenged by residents and a lot of hard work has gone into building a better image of the area through the media, service providers and public events.

This continued effort has encouraged people to come into Pan from other areas of the Island, and has started to receive recognition not only on the Island but also from national neighbourhood schemes.



The partnership team



John and Mary Norledge, neighbourhood renewal managers



(left to right): Steve D'Giacoma, community development manager; John Martin, community warden; Paul Armstrong, office manager; Kim Roscoe, community warden; Tina Byers, community activities worker; and Cheryl Snudden, community link officer.

Pan initiatives



Pan community wardens

One of the great successes of the Pathfinder initiative has been the community wardens' scheme. The wardens have initiated two rubbish amnesties at Pan, where residents have been able to use skips funded by the partnership to remove many tons of rubbish. They have also identified lanes and alleyways around Pan in poor condition and have been instrumental in getting them repaired. The wardens are based at the Isobel Centre next to Downside Middle School.

Youth workers

Pan Neighbourhood Partnership has jointly funded two youth workers, based at Downside Middle School. Their role includes providing youth activities during school breaks, running the youth club, and being on hand to deal with issues concerning young people. They also work with primary schools to help make the transition from primary to middle school a lot smoother and less stressful.

Countryside ranger

Another investment made by the partnership has been a countryside ranger dedicated to Pan for two days a week. He provides a full programme of activities, helping residents find out more about the wildlife in their area and across the Island.

Events and activities

Since the project started there has been a significant increase in activities and events in Pan. They include:

- **Fashion show**

In March this year the partnership helped put on an inter-generational fashion show.

- **Soapbox Derby**

In May last year, the Isle of Wight Soapbox Derby Challenge moved to Pan. An event for young people, in 2006 it attracted more than 600 people, with teams using homemade soapboxes (go-carts) to compete against one another. The event has support from agencies including the police, Connexions South Central, youth services, Extended Schools and the partnership. Sunday 3 June this year will see the event return once again to Pan. To find out more, visit the

website at www.iow-soapbox-derby-challenge.org

- **Have Your Say Day**

Once a year the partnership gives Pan residents the chance to express their opinions and voice concerns. The *Have Your Say Day* is a way to find out what residents want and how they feel the partnership is working for them. The day also includes workshops and other activities.

- **Community awards evening**

The inaugural Pan Community Awards Evening was held in September last year, with community members and different agencies voting on awards in seven different categories.

- **Lantern parade**

There has been a constant effort to ensure that the Pan carnival has continued for many years and each year the winter lantern parade sees all ages turn out to take part in the lit procession. During the summer, Pan area schools work together on themed projects to take part in Newport Carnival procession.

- **Pan archaeology**

This year saw the second phase of the Pan Archaeology project, which started in 2005. Residents had the chance to dig for and identify finds, and learn more through presentations and activities at the Isobel Centre. In February a glass case was purchased for all the finds to be displayed at Barton Primary School.

- **Ground workers**

The Ground Workers group was set up to tackle specific problems flagged up by agencies and residents. The group meets every two months and welcomes residents to its meetings.

More information is available from Cheryl Snudden on 814260.

- **Newsletter and website**

The partnership produces a quarterly newsletter which goes to all 1,500 households on Pan. The newsletters, together with other Pan information, can be found at the partnership website at www.pan-iow.com

THE ISLAND'S West Wight is renowned for its outstanding rural beauty and rugged coastline, from Newtown Creek and the Needles to the erosion-carved chimes and fossil rich cliffs of the west and south-west coast.

Residents' interests across the West Wight are represented by a collection of parish councils, as well as through the councillors who are elected to the Isle of Wight Council.

In this feature we give details of the five Isle of Wight councillors for the West Wight wards of Brighstone and Calbourne, Freshwater Afton, Freshwater Norton, Shalfleet and Yarmouth, and Totland, and for the parish and town councils within those areas.

Other areas in the western half of the Island, including Carisbrooke and the central rural Wight, will be the subject of future features.

Brighstone Parish Council

Members: Colin Bridges, Elizabeth Bright, John Cirrone, Heather Jolly, David Tolfree, Roy Haviland, Jill Wareham.

Parish clerk: Mrs Avice Mariner

tel: 740396

email: avice.mariner@virgin.net

Calbourne Parish Council

Members: Daphne Birkwood, Keith Weeks, John Angell, John Hayward, John Jewett, Michael Hailes.

Parish clerk: Mrs Lea Kerley

email: leakerley@hotmail.com

Freshwater Parish Council

Members: Margaret Gray, Linda Barnes, John Belcher, David Eccles, Caroline Reed-Sampson, Stephen Gray, John Medland, George Cameron, Andy Sutton, Peter Plucknett, Gill Kennett, Brenda Hobbs, Colin Lillywhite, Kathleen Ottway.

Parish clerk: Mrs Sally Woods

tel: 752000

email: freshwater@btconnect.com

website: www.freshwater-parish.org.uk



Shalfleet Parish Council

Members: Michael Carr, Colin Hedgely, Pam Broadhead, Roslyn Runnett, Bill Burt, Brenda Baxandall.

Parish clerk: John Whitney

tel: 531464

email: whitneyparishcouncil@tiscali.co.uk

Totland Parish Council

Members: David Filby, Valerie Cook, Alastair Jones, Carol Bryan, John Howe, Brian Hinton, Vincent Fennell, John Honeychurch.

Parish clerk: Val Gallard

tel: 756028

email: totlandparishco@waitrose.com

website: www.totlandparishcouncil.org.uk

Yarmouth Town Council

Members: Steve Cowley, Ron Goodridge, Dave Kennett, Mike Stallard, Rod Corbett, Stuart Dyer, Angela Hollist, Sue Poston.

Parish clerk: Bob Blezzard,

tel: 402259,

email: bobblezzard@btinternet.com

Representing West Wight

We continue our focus on how residents' affairs are represented in different areas across the Island, with a special look at the West Wight



West Wight area councillors (Isle of Wight Council)

Brighstone and Calbourne

Colin West
Tel: 740328
Email: Colin.West@iow.gov.uk



Freshwater Afton

Gill Kennett
Tel: 755036
Email:
Gill.Kennett@iow.gov.uk



Freshwater Norton

Andy Sutton
Tel: 754661
Email:
Andy.Sutton@iow.gov.uk



Shalfleet and Yarmouth

Bill Burt
Tel: 531676
Email: Bill.Burt@iow.gov.uk



Totland

George Cameron
Tel: 752060
Email:
George.Cameron@iow.gov.uk



West Wight connections

- Robert Hooke (1635-1703), one of the most brilliant and versatile scientists of his day, was born at Freshwater. Hooke worked on devices from flying machines to air pumps, and was the first curator of experiments at the Royal Society. His skills ranged from microscopic investigations into botany, chemistry and other sciences, to his appointment as city surveyor after the Great Fire of London.
- Guglielmo Marconi (1874-1937) (pictured right) moved to the Island in 1897 to promote his work on wireless telegraphy, establishing the world's first wireless station at Alum Bay.
- The third Isle of Wight Festival of Music at the end of August, 1970, attracted hundreds of thousands of people to a site at Afton, with performers including Jimi Hendrix, The Who, The Doors and the Moody Blues.



©MHS, Oxford

826

King Egbert of Wessex gives West Wight to Winchester Church.

1001

Danish raids on Newtown shore and the West Wight.

1166

Yarmouth is the first Island town built to the medieval grid system.

1214

King John visits Yarmouth to organise an invasion of France.

1238

A charter is granted to Newtown by the Bishop of Winchester.

1285

Edward I stays at Swainston, with a view to acquisition.

1334

Mottistone is recorded as having 60 taxpayers.

1545

Yarmouth Castle is built.

1699

The present Newtown town hall is built.

1786

The first Needles lighthouse is built, on the upper cliffs.

1853

Alfred Tennyson moves into Farringford at Freshwater.

1863

Brook Church burns down.

1889

Dolphins are captured in Alum Bay.

1897

Marconi establishes a wireless telegraph station at Alum Bay.

1970

Hundreds of thousands descend on Afton for the Isle of Wight Festival.

Repaying their debt to society

Schools, charity groups and other organisations across the Island are benefiting from the new *Unpaid Work* scheme undertaken by people convicted of criminal activities. Here we explain how the scheme works

AN UNPAID army of men and women are currently involved in thousands of hours of work on projects to improve life for communities across the Island.

But there is a good reason why members of this labour pool are giving their time for nothing – they are repaying a debt to society after being convicted of criminal activity.

Unpaid Work (previously known as community service or community punishment) is being used more and more by Island courts as a punishment.

Offenders are required to work for the benefit of the community as all or part of their sentence. This work is arranged and supervised by the Hampshire Area of the National Probation Service.

On the Island, more than 22,000 hours of unpaid work are currently carried out each year, approximately 15,000 of these for the Isle of Wight Council and parish councils. The council also provides materials in support of the work. The work is carried out either in supervised groups or as

individual placements working with organisations such as local charities.

The work is a requirement of a community order and can be for a minimum of 40 hours and a maximum of 300 hours, usually around 100 hours.

Thorough assessments are carried out to establish where offenders should work, what skills can be utilised and the safety of the public they might meet in the course of this work.

Seventy-five per cent of the offenders required to do it are

already in full time employment, so they have to work at weekends. For those who are not, the work can be combined with learning work-related skills and obtaining qualifications. This increases opportunities to gain worthwhile employment which, in turn, reduces the risk of re-offending.

Around 40 per cent work in individual placements. Often these offenders have skills that can be utilised to help meet an organisation's specific need.

Jo Inge Svendsen, Probation Service acting area manager for

"This is a great initiative that allows these individuals to give something back to society while learning skills which will encourage them back into work in the long run. As a council we are pleased to be involved in this."

Ian Ward, cabinet member for safer communities



What the workers say:

"I won't get into trouble again as I have learned my lesson and although it is a punishment, I think community service really helps people integrate into the community and even learn new trades."

Tara

"I have learned from my mistakes and I will now keep my head down when trouble arises. I now want to focus on my goal to become a plasterer and have my own business."

Ben

- Call your probation service's Unpaid Work office for details of how organisations can benefit: South East Hampshire (including Isle of Wight): 02392 728400.



Pictured: The Pavilion at East Cowes benefits from the Unpaid Work scheme

Portsmouth and the Island, said: "The aim of unpaid work is not merely to punish the offenders by depriving them of some of their leisure time but to give something back to the community."

Built into the system are elements to change attitudes and situations that are designed to prevent re-offending. These measures can include tuition in basic skills like reading and writing, help with problem solving at work and, by working with supervisors and volunteers, engendering a feeling of taking

pride in work and of being valued.

A huge range of work is undertaken, including projects put forward by local crime and disorder partnerships in areas where crime or the fear of crime is a problem. These could include cutting back undergrowth on public footpaths and graffiti removal, painting and decorating church halls and community centres, groundwork and maintenance for schools and churches, work in charity shops and with many not-for-profit organisations that would not

otherwise be able to afford to have work done.

One area where offenders have been put to work is at East Cowes where they have been busy helping to get the fire-damaged pavilion back into use. The efforts of work teams have also recently benefited Love Lane Primary School and Little Love Lane Nursery, residents of Jeals Lane and Foxes Bridge in Sandown, Spring Hill Garden Group, Shalfleet CE Primary School, the Samaritans, and the Memorial Hall at Freshwater.

The council's centre for the coastal environment at Ventnor is currently playing a key role in a flood management and coastal erosion study of the Eastern Yar Valley and Bembridge Harbour.

Led by the Environment Agency and funded by Defra, the study began in January 2006 and takes in the catchment of the Eastern Yar – which extends from its upper reaches in the southern downs behind the valleys of Whitwell and Wroxall, through the Arreton valley, eastwards to Sandown Bay and past Brading to Bembridge Harbour.

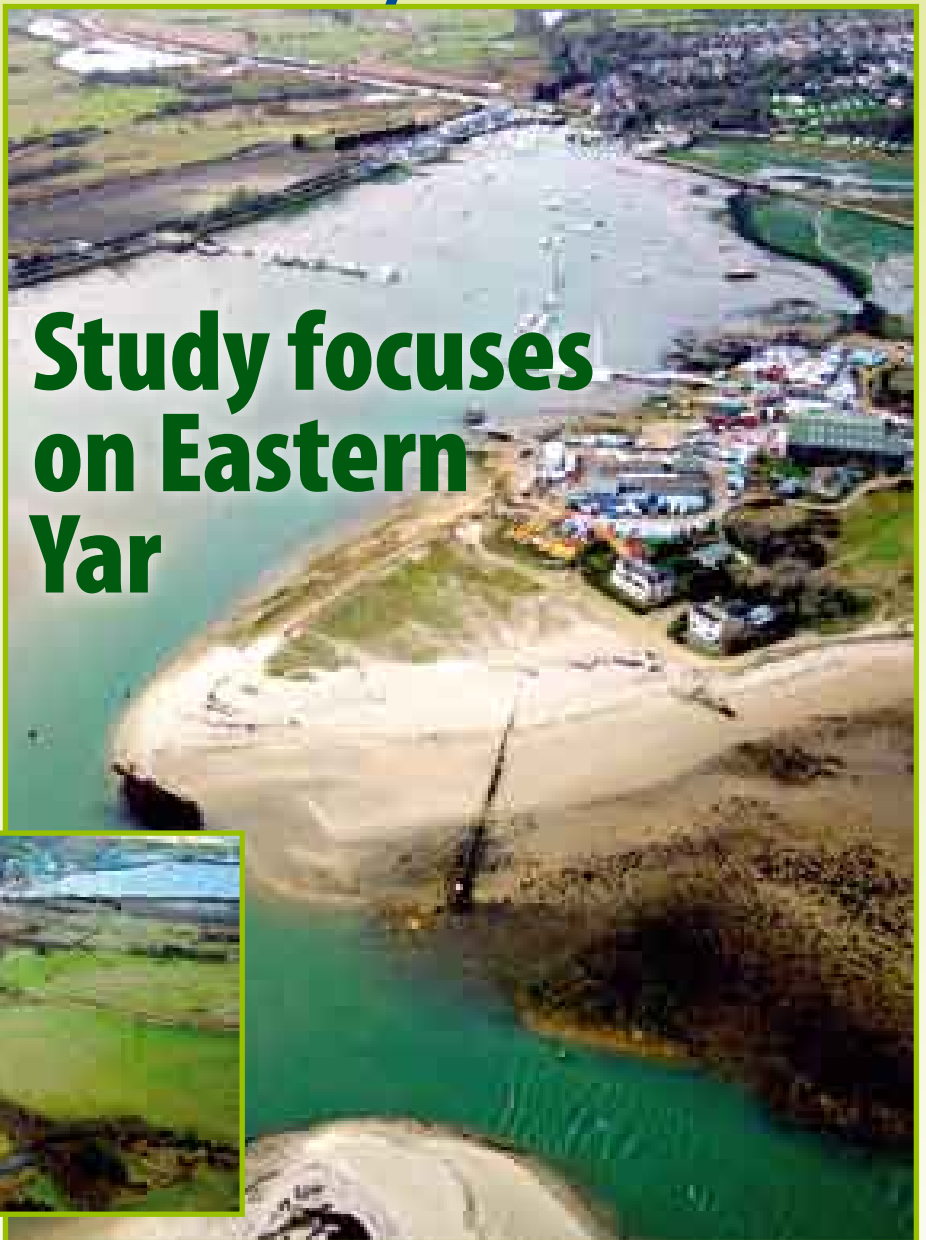
The study looks ahead for the next 100 years, assessing coastal flooding and erosion risks. It has also identified localised flooding problems around Wroxall and Whitwell.

A computer model of the Eastern Yar Valley has been developed to help to determine how flood waters move through the catchment area and out into the harbour.

Workshops have also been held with local interest groups to explore options for managing flooding and coastal erosion.

The final consultation on the preferred solutions is planned for the autumn of this year, with completion of the study in early 2008.

- More information and the results of the strategy's first phase are now available on the strategy's website at www.coastalwight.gov.uk/easternyarstrategy



Seasonal hint for wildlife in the garden

Rather than using pellets to reduce the numbers of slugs in your garden, encourage hedgehogs, thrushes, slow-worms, shrews and ground beetles, all of which eat slugs. Make sure the garden is hedgehog-friendly by removing hazards such as loose netting.

If you have a pond, an area that slopes gently down to the water's edge will help wildlife get to it easily and safely for drinking.

Have you seen a hedgehog recently? If so record your sighting at www.iwnhas.org.uk and add to our knowledge of the Island's wildlife.



Nature notes

The Island's cliffs, set against a bright blue sparkling sea are a blaze of colour at the moment. In May the cliffs at Afton, overlooking Freshwater Bay, have a stunning display of sea pink, also known as 'thrift'. The flowers, which rise above grey green cushions of tightly packed narrow leaves, vary in colour from pale pink to cerise. Cliff tops are harsh environments exposed to strong winds and salty spray and the leaves assist the plant in conserving water, so helping it to survive. Other places where thrift can be seen include the crevices of rock at the top of Gore Cliff above St Catherine's Point, and in short turf on saltmarshes.



Along the coastal grasslands you will see glanville fritillary butterflies on the wing on bright calm days from the second half of May to early July. Although the butterfly is widespread in central Europe, in the British Isles it is virtually restricted to the soft cliffs of the Island's south and south-west coasts. The upper side is orange with dark brown patterning. When it alights to feed the undersides are visible, the forewing being lighter orange while the hind wing is cream with orange bands.

Grasses do not often provoke the admiration afforded to our brightly coloured flowers, but quaking grass is an exception. It will soon be seen growing in the short turf of the downs and it has delicate, drooping, papery flower-heads with a silvery sheen. Like other grasses, it is pollinated by the wind and the local name of 'wobble-waggles' comes from the graceful nodding of the flowers in the breeze.

Anne Marston, assistant ecology officer



EC welcomes Island climate change study

The European Commission has welcomed a £1.4 million study led by the council's centre for the coastal environment at Ventnor into the impacts of climate change on Europe's coastlines.

The study, called Response (Responding to the risks from climate change on the coast), was completed in December 2006 after three years of collaborative research across Europe led by the council.

Dr Joaquim Capítão, deputy head of the European Commission's Directorate General for Environment, said: "The Isle of Wight's technical report was of an excellent standard and was most comprehensive with a wide range of useful annexes which we are very happy to accept."

• Further details on the Response project are available at www.coastalwight.gov.uk

Advertisement

**Buy your family a new
AGA Cooker**

**Better food, a warm
kitchen and happy
meal times**

Why not drive in and see us ?

**Also Bathrooms, Calor Gas and
Heating and Plumbing Supplies**



523041

28 Daish Way Newport (off the St Mary's Roundabout)



ACTIVITIES

Search for Hidden Treasure (29 May)

Join a geocaching treasure hunt and search for replica artefacts using GPS, at Brading Roman Villa, 1pm to 3pm, booking essential, email mary@bradingromanvilla.org.uk putting BRVGEO as the subject, or tel: 406223.

Yarmouth Old Gaffers' Festival (1-3 June)

Eleventh annual festival at Yarmouth, free entertainment, Island produce and craft stalls, children's fun fair, Air Sea Rescue demo, classic sailing vessels including gaff-riggers, venue The Square and Village Green, 12 noon 1 June to 6pm 3 June.

Sail the Wight (9 June)

A sponsored sail around the Island to raise money for the Earl Mountbatten Hospice,

Newport, organised by East Cowes Sailing Club in conjunction with the Westerly Owners' Association, start at East Cowes Sailing Club 5.45am, contact Paul Walker tel: 293087, or sailthewight@eastcowessc.co.uk

EXHIBITIONS

Alfred (Paddy) Kerr Painting Group Summer Exhibition (26 May - 3 June)

An exhibition of more than 40 paintings in oils, pastels, water colours and acrylics, showing Island and sea views, flowers, animals and other subjects, at Ventnor Botanic Garden (Echium Room), 10am to 5pm, admission free.

Penny Coates and Pat Eades (23-24 June)

An exhibition of watercolours, pastels and mixed media of Island views, flowers



Steve Knightley will be performing with Jenna at the Memorial Hall, Freshwater on 27 May, 8pm

and animals, Ventnor Botanic Garden (Echium Room), 10am to 5pm.

MUSIC

Jhelisa Anderson, Primitive Guide to Being There (24 May)

Highly acclaimed jazz and soul artist Jhelisa Anderson performs at the Anthony Minghella Theatre, Quay Arts, Newport, box office tel: 822490.

Music for a Summer Evening (27 May)

A concert by the Milton Keynes Sinfonia, at St Mary's Church, Cowes, 7.30pm, admission by programme (£7, £6 concession, children free), in aid of church building repairs, tel: 295547 or 295425.

Steve Knightley and Jenna (27 May)

Vaguely Sunny and Quay Arts present a folk music concert at Memorial Hall, Freshwater, 8pm, tickets from Quay Arts, tel: 822490.

Newchurch Male Voice Choir Concert (1 June)

A joint concert with Mousehole MVC (Cornwall) to raise funds for the St John's Church Appeal, Ryde, to be staged at the church, 7.30pm, tickets on the door (adults £4, children £1).

The Bluesroom (2 June)

A night of international blues featuring, from New Zealand, The Paul Garner Band, plus support from The Contra-Blues Band, at The Venue Ryde Theatre, 7.30pm, tickets £10/£12 available from

box office, tel: 568099.

Exclusively, Ryde School Tour - Swing and Jazz Bands (15 June)

An outdoor concert with the Ryde School Tour Band, enjoy a summer evening and bring a picnic and chairs, tickets £6.50 (£7.50 on the night), at Old Rectory Garden, Whitwell, 7pm.

SHOWS

The Return of Henry VIII and His Falconers (26-31 May)

Exciting costumed falconry display recreating the visit of Henry VIII and his falcons to Appuldurcombe in 1538, at the Owl and Falconry Centre, Appuldurcombe House, Wroxall, 10am to 4pm.

Isle of Wight Classic Car Show 2007 (17 June)

A classic car show organised by the Rotary Club of Ventnor to raise money for the Earl Mountbatten Hospice, Newport, at Brading Roman Villa, 10am to 5pm, contact EMH Fund raising on 528989 or

visit www.isleofwightclassicarshow.com

Flower Festival (22-24 June)

Flower festival in Northwood Church staged by Northwood Floral Art Group, special guest on 23 June (2.30pm) is Deb Goodenough, head gardener at Osborne House, entrance free, 10am to 5pm.

THEATRE

Double Trouble (8-9 June)

Newchurch Drama Group presents two one act plays at Newchurch Community Group, 7.30pm, tickets £5 (to include light refreshment), available from Pat Williamson tel: 867189.

Much Ado About Nothing (21-22 June)

By William Shakespeare, open-air performances at Northwood House, 7.30pm, gates open 6.30pm, box office tel: 289842, seating not provided, bring your own low-backed chair/rug and a picnic, tickets adults £10, children £7.

House Guest (28-30 June, 5-7 July)

A thriller by Francis Durbridge, a Cowes Amateur Operatic and Dramatic Society production, Trinity Theatre, Cowes, 7.30pm, seat prices £6 (adults), £5 (children under 16), box office tel: 295229 (from 22 June).

A Brief Encounter with Noel (4-7, 11-14 July)

A celebration of the life and work of Noel Coward, Apollo Theatre, Newport, all seats £6, box office tel: 527267.

Trailers

These listings are provided free, as a public information service. Details must be submitted either by:

filling out this form, or emailing your details to oneisland@iow.gov.uk

Please conform to the format shown. Entries are included at the editorial team's discretion.

Deadline for the next issue: 28 May (22 June publication date).

Title of event/activity:

Date:

Brief description:

Venue:

Time:

Contact name:

Telephone:

Please return to:

Trailers, One Island, Publications Unit, County Hall, Newport, Isle of Wight PO30 1UD
or email to oneisland@iow.gov.uk no later than 28 May 2007

Future issues:

Issue date	Listings period covered	Deadline for submission
22 June	22 June to 3 August	28 May
20 July	20 July to 31 August	25 June
17 August	17 August to 2 November	23 July
19 October	19 October to 7 December	24 September