

# oneIsland

Your magazine from the  
Isle of Wight Council  
**Issue seven**  
**July 2007**  
[www.iwight.com](http://www.iwight.com)

## Sailing spectacular

Getting ready for  
Skandia Cowes Week

**Also inside:** Residents' survey  
Special town focus on Cowes



## Welcome



Welcome to the July issue of the Isle of Wight Council's magazine, which brings you important information from our latest residents' survey – showing how our One Island programme of initiatives is already making a difference across the Island.

The second annual residents' survey took place in April and May, and provided key information for comparison with similar research carried out last summer. You can find out about the survey findings by turning to a special feature on pages eight and nine. The results show things are starting to get better, although there is much still to do.

In this and future editions of the magazine we will continue to highlight progress with the One Island programme of initiatives which, through consultations, you have identified as the priorities for us to work on.

We remain determined in our quest to ensure these projects really have a positive influence on the lives of Island residents and the Island as a place to live and visit.

Elsewhere in this edition we feature a helpful preview of arrangements involving the council during Cowes Week, and focus on Cowes and East Cowes as part of our regular look at how different areas of the Island are represented.

**Councillor Andy Sutton**  
**Leader, Isle of Wight Council**

**One Island** is published each month, except for September and January – these editions are combined with those of the previous month. If you have community news to share with other readers or would like to advertise in *One Island*, we would like to hear from you.

We also welcome your letters – you can contact us by post, email or telephone.

**Post** One Island, Communications, County Hall, Newport  
PO30 1UD

**Email** [Onel Island@iow.gov.uk](mailto:Onel Island@iow.gov.uk)

**Telephone** 823105



## makingcontact

### USEFUL CONTACTS

Isle of Wight Council, County Hall,  
Newport PO30 1UD

**Fax** 823333

**Email** [customer.services@iow.gov.uk](mailto:customer.services@iow.gov.uk)

**Website** [www.iowight.com](http://www.iowight.com)

### TELEPHONE SERVICES

**Call centre** 821000

Mon to Fri: 8am to 6pm

Saturday: 9am to 1pm

For telephone assistance we recommend you contact the call centre directly where we aim to answer as many enquiries as possible at this first point of contact.

#### Popular numbers

Council tax 823901

Education 823455

Environmental health 823000

Housing benefits 823950

Libraries 203880

Licensing 823159

Planning 823552

Refuse collection 823777

Roads and highways 823777

Tourism 813818

Trading standards 823396

Leisure services 823828

#### Adult and children's services

Adult services 520600

Children's services 525790

Local centres: Cowes 291144

Newport 823340

Ryde 566011

Sandown 408448

Headquarters 520600

Housing 823040

### EMERGENCY NUMBERS

#### In an emergency dial 999

Fire and rescue  
control centre (24hrs) 525121

Out of hours:  
Highways 525121

Waste disposal 0800 3283851

Wightcare 821105



### FACE TO FACE SERVICES

#### Newport Help Centre

**Tel** 821000

County Hall, Newport PO30 1UD

Mon to Fri: 8am to 6pm

Sat: 9am to 1pm

#### Ryde Help Centre

**Tel** 812678

188 High Street, Ryde PO33 2PN

Mon to Fri: 8.45am to 5pm

Sat: 9.30am to 12.30pm

#### Brading Help Centre

**Tel** 405873

West Street, Brading PO36 0DR  
IW Council desk – Tues: 9am to 1pm

#### Shanklin Help Centre

Falcon Cross Hall, Falcon Road, Shanklin

Mon only: 10am to 4.30pm

#### West Wight Information Centre

**Tel** 756140

Freshwater Library, School Green Road,  
Freshwater PO40 9AP

Mon: 9am to 5.15pm,

Tues and Wed: 9.30am to 5.15pm,

Thur: (closed), Fri: 9.30am to

4.45pm. Closed for lunch (1.30pm to

2.30pm each day)

#### Wootton Bridge Centre

**Tel** 884361

Joanne's Walk, Brannon Way,

Wootton Bridge PO33 4NU

IW Council desk – Mon, Tues,

Thurs, Fri: 9am to 1pm

## council meetings



Unless otherwise stated, all meetings are in public at County Hall. Call 823200 24-hours before a meeting to ensure it is going ahead and to check if any items are likely to be held in private session.

#### Planning Committee

(council chamber)

24 July (4pm)

21 August (4pm)

#### Licensing Committee

(committee room one)

13 August (4pm)

#### Audit and Performance Committee

(committee room one)

31 July (6pm)

#### Scrutiny Committee

(committee room one)

2 August (6pm)

#### Policy Commission for Business and Infrastructure

(committee room one)

1 August (6pm)

29 August (6pm)

#### Policy Commission for Care, Health and Housing

(committee room one)

8 August (6pm)

#### Policy Commission for Children and School Results

(committee room one)

25 July (6pm)

#### Policy Commission for Safer Communities

(committee room one)

26 July (6pm)

30 August (6pm)



## In this issue

### NEWS DESK

- 4-7** Council and community news

### FEATURES

- 8** **Residents' survey 2007**  
Your views on the council
- 10** **Skandia Cowes Week**  
Round-up of council arrangements
- 12** **Representing Cowes and East Cowes**  
Special area focus
- 14** **Ryde Help Centre celebrates**  
Ten years at the heart of the town
- 15** **Dog control**  
Beach bans and other measures
- 16** **Guide to recycling waste**  
Where our domestic waste goes

### REGULARS

- 18** **Coast and country**  
Rural and coastal news
- 19** **Trailers**  
Events and activities

Cover picture: Skandia Cowes Week  
([www.patrickeden.co.uk](http://www.patrickeden.co.uk))



ONE ISLAND is published by the Isle of Wight Council. The council does not accept responsibility for goods or services offered by advertisers. Additional copies are available from the Customer Service Centre at County Hall, libraries and other council facilities. Typetalk calls welcome.

Written, designed and produced by Corporate Communications, Isle of Wight Council.

ISSN 1752-8038

© COPYRIGHT 2007

Isle of Wight Council,  
County Hall, Newport,  
Isle of Wight PO30 1UD.

Printed on environmentally friendly paper by Limehouse.



When you have finished with this magazine please pass it on or recycle it

# Islandimage



Picture: Yachts off Cowes, by Carol Turvey

One Island is available on request as an audiotape, in large print, in Braille and in other languages. For further details, please contact One Island on 823105. The magazine is also available online at [www.iwight.com](http://www.iwight.com)



Isle of Wight libraries are inspiring young people to read their way through the summer holidays – and earn new trees for British woodlands at the same time.

The *Big Wild Read* is the ninth national Summer Reading Challenge – a reading promotion that runs in libraries throughout the summer holidays.

Children are challenged to read six or more books of their choice, spurred on by an exciting range of free incentives (including a medal) and activities. The *Big Wild Read* is also a call to action for children to make a positive difference to the environment.

Libraries and the BBC have worked together to link the Reading Challenge to the Breathing Places environment campaign, as featured in programmes like Springwatch and Nature's Calendar.

As part of Breathing Places,

the Summer Reading Challenge has formed a groundbreaking partnership with The Woodland Trust's Tree for All campaign.

Every book that a child on the Island reads as part of the *Big Wild Read* will be rewarded by tree tokens, which can be converted into new trees for Britain's woods.

The more books that children read, the more trees will be planted, with up to 20,000 being planted in the UK in the autumn as a result of the challenge.

Island libraries will be helping children every step of the way. Each participant will be given a *Big Wild Read* folder with stickers to collect during the summer.

The libraries will also be offering children free packets of wild flower seeds when they join, which if planted at the beginning of the summer, will grow and flower by the autumn.

Library staff will encourage children in their reading and suggest interesting books for them to try.

The *Big Wild Read* website will capture children's responses to the books they are reading, and help them discover more about their favourite authors.

There will be games and activities, tips on how to make a difference and a link with stories on the web through which children can contribute reviews.

Elspeth Jackson, the council's development librarian for young people and lifelong learning, said: "We hope as many local children as possible will join in the *Big Wild Read* and enjoy a summer of reading. Isle of Wight libraries will help children explore the imaginative world of books, and find out how to make a difference to the environment."

## Joining forces to tackle speed



The latest council initiative to cut traffic accidents by targeting speeding motorists is now well underway.

The Community Speedwatch scheme is being piloted at The Fairway, Lake – and involves police supporting local volunteers in monitoring the speed of traffic.

The speedwatch volunteers use hi-tech radar and blue tooth equipment to clock the speed of motorists and record the details of offending vehicles. These are then passed on to the police who contact and warn motorists that their speeding is unacceptable.

The Lake speedwatch is the first scheme of its kind on the Island, and others will be introduced over the coming year.

The speedwatch locations have been chosen by council road safety experts after parish and town councils were asked to submit problem areas in their patches.

Tracey Skipper, the council's senior road safety officer, said: "The aim is that the warning notices received by speeding motorists will educate them that the speeds at which they have been driving are not acceptable."

Other steps being taken by the council to cut the number of traffic accidents include installing speed-reactive signs, anti skid work and introducing 20mph speed limits outside schools where possible.

Picture courtesy IW County Press



## Paul is Island's new chief fire officer

The council has appointed long-serving firefighter Paul Street as the Island's new chief fire officer.

Paul, 48, from Brighstone, was selected ahead of applicants from all over the UK.

He has been a firefighter on the Island since 1978 and has risen through the ranks to become acting chief fire officer since October 2005. In that time, the service has moved on from an Audit Commission rating

of "poor" to its current position of "improving well".

Stuart Love, director of environment and neighbourhoods, said: "Paul not only understands the need to take the service forward through modernisation, he has been at the heart of the great work done so far in that direction. He has tremendous knowledge of the service at all levels and also has a great passion for the Isle of Wight."



## Actor helps launch special week



How to keep safe was the key theme highlighted by the council's learning disability services when the Island took part in National Learning Disability Week.

The council teamed up with Mencap Pathways as well as other organisations to raise awareness of the issues faced by people with learning disabilities during the week at the end of June.

The week was launched with an Information Fair at the Riverside Centre, Newport, and was opened by actor Geoffrey Hughes (*pictured*) and Councillor Dawn Cousins, cabinet member for health and community well being.

Activities during the week included:

- a sponsored walk to raise funds for the chemotherapy unit at St Mary's Hospital, Newport;
- a 'Play in a Day' arts performance where people with a learning disability spent a day preparing an evening performance.



Twenty years after it was launched, the Crimestoppers charity is going from strength to strength.

Designed to give a lifeline to those with information who would not or could not talk to the police, Crimestoppers can claim at least 17 arrests a day across Britain from information passed to the police.

It has taken time to get the message across, break down old prejudices and generate confidence that the protection of anonymity provided by Crimestoppers means no one will know you phoned.

On the Island, there were 37 useful calls in May, more than Portsmouth and Southampton. The Island figures have risen significantly this year following a leaflet with the *Isle of Wight County Press* newspaper late in 2006. In April this year there was one call a day to Crimestoppers on the Island, a big increase on the one call a week figure for April 2006.

Crimestoppers established a volunteer board on the Island in the summer of 2005. Its first campaign – in conjunction with Medina Housing – was to bring the message to Pan. Since April 2006 there have been 32 valuable calls about crime in Pan. A second campaign against doorstep crime was launched with Age Concern and Neighbourhood Watch to highlight the vulnerability of older people taken in by distraction burglars and rogue traders.

The Island board was set up by Dick Bradbeer, chairman of the County Press Group, who has now handed over to Peter Grimaldi – former Island High Sheriff.

All calls from the Island are handled by the charity's call centre at Godstone in Surrey, which is open around the clock. It is manned by paid professionals trained in handling agents and informers.

Calls are free and callers' details are neither asked for nor captured. No recordings are made of any calls.

## Gurnard joins No Cold Calling Zones

The parish of Gurnard has become the latest area on the Island to declare itself a *No Cold Calling Zone*.

In the scheme – supported by the council's trading standards service – *No Cold Calling Zones* are clearly defined by signage warning rogue traders they are not welcome.

Work is also done within the zones to inspire confidence in residents to say "no" to uninvited salespeople or tradesmen. This process involves pre-notified visits by trading standards officers who give advice to households and hand over an information pack with safety messages, telling householders their rights and what to do if a cold-caller or rogue trader comes knocking.

The Gurnard scheme, aided by a British Telecom grant, was launched last month.

Other partners in the scheme are the fire and rescue service, community support wardens,



Isle of Wight Age Concern, Neighbourhood Watch and Crimestoppers.

Julie Woodhouse, senior fair trading officer, said: "*No Cold Calling Zones* are one of the tools the trading standards service on the Island is using to combat doorstep crime. It goes hand in hand with initiatives such as our work during the Operation Rogue Trader project and also our Buy With Confidence scheme."

## Smartening up our public conveniences

Three toilet blocks have been overhauled at the end of the first phase of a major £800,000 drive to improve Island public conveniences.

The refurbishment of toilets at Eastern Gardens and Devonian in Sandown and the Parade in Cowes are part of the council's One Island programme of initiatives.

Plans to build new public lavatories in Brannon Way car park, Wootton, Brading's main car park, Yaverland car park and the Cascades at Ventnor are also progressing.

In addition, the toilet building in The Cut in Cowes is being replaced, while a major overhaul of the toilets in Appley Park, Ryde will also begin this year and be completed well in time for the 2008 holiday season.

As well as refurbishment the initiative involves employing toilet attendants to service some of the busiest Island conveniences during peak holiday periods. These attendants will be employed in the following towns (on duty from 11am to 7pm each day):

- Ryde (Western Esplanade, Eastern Esplanade, Appley Park, Puckpool, Lind Street).
- Sandown (Yaverland, Eastern Gardens, The Pier, Devonian, St John's).
- Shanklin (Chine Bluff, Esplanade Gardens, Falcon Cross, Tower Cottages).
- Cowes (Medina Road, The Cut, The Parade, Park Road, Mornington Road).



This summer holiday free casual/public and fun swimming sessions are once again available to all Island children aged up to and including 15 years old.

Free swimming is available to any child who presents a Junior Residents' Registration One Card. The card is free and can be obtained from one of the participating centres by completing an application form. A parent or guardian signature is required.

If a child already has a card through previous free swimming initiatives, just bring along the card and start swimming straight away.

The Junior Residents' Registration One Card is part of the council's highly successful One Card scheme that provides access to sports and leisure facilities at affordable prices.

The free swimming offer is available at three pools operated by cultural and leisure services: Medina Leisure Centre in Newport, The Heights Leisure Centre in Sandown and Waterside Pool in Ryde. It is also available at West Wight Sports Centre in Freshwater, with the Junior Registration Card.

- There is no limit to the number of swims during the offer period, but as with all activities, participation is subject to availability. Free swimming will be subject to set session times. The offer runs from Saturday 21 July to Sunday 2 September 2007.

## Helping youngsters make the transition

More than a dozen Island children who face or have faced challenging circumstances in their lives will be enjoying an adventure to Wales over the summer holidays as part of the *Active8* scheme.

The council-supported scheme aims to provide a smooth transition between leaving middle school and joining high school for young people most at risk of struggling to settle in.

The idea of the *Active8* trip is to help build confidence and self-esteem. It also helps the youngsters make new friends with adults and other young people while helping them explore their own personal expectations.

The group will take part in team activities, group work, sport and a range of other activities.

- If you would like more information on the scheme you should ring 529790.

## Eradicate those bugs and germs!

Island middle school pupils turned secret agents to undertake a real-life mission to rid their own kitchens of villainous bugs and bacteria.

The youngsters from Archbishop King Middle School teamed up with the council's environmental health department to take part in a food hygiene project called *Mission:Possible!*

The scheme, run in partnership with the Food Standards Agency is a UK-wide initiative aimed at teaching pupils aged eight to ten, about preventing food poisoning.

The project, which coincided with National Food Safety Week in June, has been designed to complement the national curriculum, contributing to several key elements. It will be extended to other Island middle schools in the future.

During *Mission:Possible!* pupils were provided with a mission briefing from environmental health officers. This involved class-based fun exercises involving learning about the basics of food hygiene, the causes of food poisoning and how it can be prevented.

After this initial briefing the children were given a 'secret



agent' kit to take home and carry out a number of experiments in their own kitchens, for example checking fridge temperatures.

Warren Haynes, environmental health manager, said: "This project is an excellent opportunity for raising the awareness of food safety and how to avoid poisoning in the home. Children really enjoy the scheme's secret agent theme, helping them to learn practical applications of science and share that knowledge at home."

## Take care during heatwaves

Older people on the Island are being advised to take special care if a heatwave is forecast.

They may especially be at risk from heat exhaustion leading to heat stroke during periods of extreme heat.

Heat exhaustion symptoms include headaches, dizziness, nausea and vomiting, muscle weakness or cramps, pale skin, a weak pulse and high temperature.

If these symptoms are ignored, then heat stroke/serious illness can follow.

To prevent heat stroke and heat exhaustion avoid going out in the hottest part of the day and wear loose-fitting cotton clothes.

During a heatwave, draw curtains or blinds if the temperature is hotter outside than inside and have a supply of water and ice available. Once the temperature inside falls, open windows.

- For further advice look at the NHS Direct website, [www.nhsdirect.nhs.uk](http://www.nhsdirect.nhs.uk)





## The first Isle of Wight Design Awards

The best in architecture and environmental design is being encouraged through the Island's first bi-annual design awards scheme.

The scheme is being developed by the council's conservation and design team, with the winners to be presented with their awards at a ceremony in October.

There were eight nominations in four categories for 2006, with judging taking place in March this year.

The categories are: Agenda 21 Sustainable Design; AONB Rural Design; Isle of Wight Design; and Outstanding Design.

The nominations for 2006 were: Haddon Lake House, St Lawrence (*pictured*); Brighstone Scout and Guide Community Building; Brading Roman Villa; St George's Hall, Shanklin Primary School; 128-129 Pyle Street, Newport; Little Herrons Pre School, Wootton Primary School; Fiveways School extension, Ryde; and Adams Row, Newport Street, Ryde.

The results of the judging will be announced at the presentation ceremony, which is being held in conjunction with the Green Island Award Scheme.

- Details of the award scheme can be found on the council's [iwight.com](http://iwight.com) web site.

## Celebrating the Island's history, architecture and culture



PICTURED: Quarr Abbey is just one of the sites opening up to celebrate the Heritage Open Days

This September the Isle of Wight is taking part in Heritage Open Days, a major national event to celebrate history, architecture and culture.

Heritage Open Days takes place each year, co-ordinated by the Civic Trust and English Heritage, and this year runs from 6 to 9 September.

The event offers free access to buildings usually closed to the public or which would normally charge an admission fee. There will also be a variety of free guided tours, walks and activities on offer.

Events and attractions on the Island's Heritage Open Days schedule, include: a guided tour of a newly restored Victorian lake and walled garden; ghost tours; free entry to Havenstreet station and museum (\*normal

charges apply for rail travel); the Underwater Archaeology Centre at Fort Victoria; Ventnor Heritage Museum; talks at Quarr on the ruins of the ancient abbey, and free entry to the Grade II\* monastic church designed by architect Dom Paul Bellot.

Stuart Van-Cuylenburg, Heritage Open Days co-ordinator for the Island, said: "Heritage Open Days was enjoyed by hundreds of people last year. It was fantastic to see so many people appreciating the events on offer and learning about their local heritage. We hope this year's events will encourage even more people to enjoy the Island's history."

- For more information visit [www.iwight.com/conservation](http://www.iwight.com/conservation) (click on heritage open days) and [www.heritageopendays.org](http://www.heritageopendays.org)

## A Jacobean Mayfair

Notes on Shorwell's buildings



## Find out about historic Shorwell

The council's conservation section has recently published a special leaflet on historic buildings at Shorwell.

The leaflet is the culmination of a community-based historic buildings survey conducted in the parish, designed to raise local awareness of the village's historic architecture. As part of the project, building surveying training events were held, attended by 40 people; a talk was given on the types and qualities of the local building stone employed; illustrated lectures were provided on recording and dating architecture; and participants went on guided walks around the village.

The project was supported by grant aid from the Island's Area of Outstanding Natural Beauty (AONB) unit and a donation from the South East England Development Agency. Further projects are planned throughout the Island's AONB area in the near future.

- For more information on the project you should contact Katie-Sue Wilson, conservation officer, on 823552.

# More to do - but we're getting better

The second annual survey asking Island residents their views about the council was carried out between 19 April and 6 May this year – and the results suggest we are making changes for the better across a range of areas, although there is still much to do. Here we look at the findings



PICTURED: One Million Blooms planting at Racecourse roundabout, Whippingham

NINE MONTHS after the council's first annual survey of Island residents, the results of the second follow-up survey have revealed encouraging signs.

Although benefits are starting to be seen across the Island, we know there is still more we can do to ensure you are more satisfied with your council's services. This latest survey will help us in our determination to achieve this.

## How do you feel about us generally?

Over half of you feel satisfied with the council, with more of you trusting us as an organisation and feeling more informed about the services and benefits we provide.

	2006	2007
Satisfied	44%	54% (+10*)
Dissatisfied	35%	28% (-5)

(\*Net satisfaction up from +9 to +26)

	2006	2007
Trust	40%	45% (+5)
Distrust	42%	32% (-10)

The survey also showed that your opinion of the council has improved slightly since 2006. The proportion of you who speak highly of us has increased by 2% and the number of you who are critical of us has decreased by 8%. This is seen to be due to improved management style, communications and keeping you better informed.

More of you also feel that we are taking your views into account when making decisions and that we are generally providing good value for money (up 5%).

## What did you tell us about council services?

More of you think our services have improved but still a large proportion of you feel things haven't changed, so we still have more work to do.

"The survey has delivered promising signs that we are heading in the right direction in our quest to improve services for Island residents. Through the *One Island* programme we remain determined to achieve the goals you have set us."

*Councillor Andy Sutton, Leader Isle of Wight Council*

Question: On the whole have council services got better or worse over the last 12 months?

	2007
Better	30%
Worse	14%
Unchanged	49%

## What do we need to focus on?

Services you told us we need to improve include: road maintenance, rubbish collection and recycling, tackling crime, education, and public amenities.

## What do our staff say?

Last year's survey gave some uncomfortable reading about who some of our harshest critics were – our own staff.

It appears from this survey that work we are doing with staff to tackle their issues, is starting to have an effect, with a reduction in those who would criticise the council (down by 32%) and nearly a quarter stating that management, communications and consultation are good. However, we know we still have a lot more to do to address the issues that staff raised.

## What do you think of the One Island programme?

We were delighted to see that nearly half of all Island residents are aware of the *One Island* programme, despite it only being launched in February this year.

The issues of **respect**, **pride** and **value for money** remain high on people's agendas, but some improvements are already perceived around issues of speeding drivers, parents taking more responsibility for their children and noisy neighbours.

However, issues of respect remain a key





Key meetings for middle schools (Year 9 merger) are taking place

concern, eg vandalism and graffiti, drugs, people being drunk or rowdy in public places and teenagers hanging around on the streets – all of which we will continue to tackle through *One Island*.

Look out for regular updates on the progress of the *One Island* programme which we will feature in each edition.

## What about our plans for the future?

More of you now feel informed about our plans for the future compared to last year (up by 7%) and feel that council services will get better over the next year.

	2007
Better	41%
Worse	13%
Unchanged	35%

More of you also consider that the council is a strong leader in the local

area (up by 4% to 52% of residents), and over half of you feel that the Isle of Wight is a good place to work, and two thirds of you feel it is a good place to invest in.

## So what next?

The results of the second survey are encouraging, but the council is under no illusions that there is still much more to do to meet the expectations of Island residents. Your expectations have been set – we now need to deliver our promises.

Chief executive, Joe Duckworth, said: "The results of the survey are extremely encouraging, but we know we started from a very low base across all these areas and we are determined not to be complacent but to continue to deliver improvements to our services to meet your needs."

## Survey background

- The survey was based on 800 interviews with Island residents aged 16 and over and carried out by Infocorp.
- Infocorp is a member of the Market Research Society and fully abides by its code of practice. To view the full survey report, visit our website [www.iwight.com](http://www.iwight.com)
- The survey was conducted by telephone with a random sample of residents and weighted to the known profile of residents.

## Let us know your views

The survey is just one way in which your council stays in touch with the views and needs of residents.

If you want to let us know your views on this or indeed any issues, please email: [oneislandteam@iow.gov.uk](mailto:oneislandteam@iow.gov.uk) or tel: 821000, or write to One Island Team (fifth floor), Isle of Wight Council, County Hall, Newport PO30 1UD.

# One Island – progress so far

## Completed/in progress

- Community speedwatch trial area in force in Lake
- Speed awareness initiative involving around 50 speeding motorists
- Approximately 14,000 free swims taken up this year (up nearly 50% on 2006)
- Free homecare scheme in operation for over 80s
- Public toilets refurbished in Sandown and Cowes
- Town centre manager recruitment underway, interviews in July
- Public realm improvement across the Island (litterbins, signposts, railings, bollards, street furniture)
- Bus shelter cleaning completed at Racecourse roundabout, Whippingham; Newport High Street; and Freshwater
- Extra signage on beaches for anti-dog fouling
- Middle school parents meetings on Year 9 merger

## This summer

- Identifying initial sites for anti-skid works
- Free children's swimming throughout school summer holidays
- Public realm improvements continue – West Wight, The Bay and East Cowes (sign cleansing, litter bin replacement, bus shelter repairs, street name-plate repairs, railing and bollard painting, general planting)
- New toilet attendants throughout peak summer months (Ryde, Sandown, Shanklin and Cowes)
- Two new dog wardens appointed by end of July

## Autumn and beyond

- Further sites to be identified for anti-skid works (early autumn)
- Plans are progressing for new toilets at Wootton, Brading, Yaverland and Ventnor (early 2008)
- Appointment of town centre managers (early autumn)
- *One Million Blooms* planting at St Mary's and St George's roundabouts, Newport
- Consultation programme commences on dog fouling (late summer)
- Boundary review proposals due (autumn)
- Town and parish council partnership project plan agreement (mid-autumn)
- School organisation implementation plan published (early autumn)
- New school vision for Cowes presented (late autumn)
- Bus information by text trial (early autumn – limited routes)

"Skandia Cowes Week is one of those iconic events which puts the Isle of Wight on the map. The council is committed to supporting the week in every way it can."

*Councillor Andy Sutton, Leader Isle of Wight Council*

# Skandia Cowes Week 2007

All the spectacle, excitement and entertainment of Skandia Cowes Week will soon be with us - and once again the council will be playing a key role in ensuring the whole week runs smoothly.

Here we give details of the vital back-up support we will be providing, from free entertainment and parking arrangements, to extra transport services, street cleansing and even PA systems for racing results...

## Getting to and from Cowes Parade during Skandia Cowes Week

Throughout the regatta, the whole of the Parade area is thrown open to pedestrians so you can move about without worrying about dodging vehicles.

Motorists' needs are still well catered for, however; the council provides a courtesy bus service known as the *Sailbus* which works in conjunction with the special Skandia Cowes Week car parks at Northwood House and Cowes High School.

The bus stops outside both locations approximately every five minutes from 9.30am until 6pm (Saturday 4 August to Friday 10 August). The bus route offers the most direct journey to the Parade, and returns the long way round via Prince's Esplanade, offering passengers fine views over the Solent.

*Sailbuses* are the only public vehicles permitted onto the Parade during Skandia Cowes Week.

## Parking your car

As there are severe restrictions on parking in Cowes town centre and the Parade during the

week, extra parking spaces are being provided in the grassed areas at Northwood Park (off Ward Avenue), and at Cowes High School (off Crossfield Avenue) when Northwood Park is full.

The car parks will be open from Friday 3 August to Sunday 12 August from 8am to 6pm (charge £5 per day/stay). A weekly pass is also available at a reduced rate. All charges include the free *Sailbus* travel to Cowes Parade, which you can catch from these car parks.

Cowes Sports Football Club and the Isle of Wight Community Club, both situated off Park Road, will also be used on Fireworks Night. All temporary car parks will be clearly signed. East Cowes offers extra car parking facilities on Victoria Grove Recreation Ground for Fireworks Night only.

## Using the floating bridge

Pedestrians and motorists can also get to Cowes from East Cowes by the floating bridge. This is free to pedestrians and provides a route through the pedestrianised zone from Shooter's Hill to Prince's Green, enjoying the sights, sounds and general atmosphere.

Extra overnight services are also being provided. From Friday night 3 August until Saturday night 11 August (inclusive), the



PICTURED: Northwood House will host several open air events throughout the week  
 BELOW: The Parade on Cowes seafront will be transformed by live bands and street entertainers



usual back-and-forth operation that would normally end shortly before midnight will extend until 2am. After this there will be each-way services at about 2.20am, 2.40am and the last one at 3am. The usual continuous service will start at 5am. On Fireworks Night (10 August) the only vehicles that will be carried between 7pm and 11pm will be emergency vehicles. All times are subject to tides, weather and navigation.

- For further information contact the floating bridge office on 293041.

## What's going on ashore?

The council plays a huge role in supporting Skandia Cowes Week, ensuring life is as much fun on shore as off. Seafront entertainment (funded by the council) adds to the atmosphere throughout the event.

The staged area on the Parade bandstand offers free entertainment both day and night. The line-up includes live bands, aerobatics, comedians and magic shows. The Parade offers prime viewing to watch the racing,

catch up on the racing results, and soak up the atmosphere, while sitting in the decked garden or wandering through the Parade Village.

The traditional Friday night firework finale managed by the council lights up the night sky, silhouetting hundreds of boats against the backdrop of the Solent. Thousands gather from Prince's Green to the marina in Cowes, or along the seafront in East Cowes to watch the magnificent display.

- Further information is also available on [www.iwight.com](http://www.iwight.com) and [www.skandiacowesweek.co.uk](http://www.skandiacowesweek.co.uk). The spectacular display takes place on Friday 10 August beginning at 9.30pm and lasting for about half an hour.

## Entertainment at Northwood House

The council puts on open-air entertainment at Northwood House to start the week:

- Theatre in the Park on the lawns of

Northwood House: *The Hound of the Baskervilles* will be performed on Friday 3 and Saturday 4 August. Tickets cost £10 for adults and £7 for children. Doors open at 6.30pm and the performances start at 7.30pm. Please bring a picnic and a low-backed chair or rug to sit on. There will be a bar and refreshments available during these two evenings. Tel: 289842 for more information.

- On 10 August there will be a barbecue, allowing you to enjoy the fireworks from the grounds at Northwood House. Please bring a chair or blanket to sit on. Cost is £10 per person. Open from 7.30pm onwards. Numbers are limited so ring 289842 to book your places.
- Cream teas will be available during the whole week.
- Cowes Open Bowls Tournament will be taking place again this year on the bowling green within the park.

## Safe and clean

The council also arranges for the town centre streets to be cleansed and litter picked on a continuous cycle throughout Skandia Cowes Week, as well as a dedicated roving team being available to carry out any spot cleaning as required, and checking public conveniences.

Litter bins will be supplemented by wheelie-bins in the High Street and Parade areas and will be emptied several times a day.

A major cleaning operation will begin shortly after the fireworks on Friday 10 August to return areas to a high standard of cleanliness ready for the early risers.

Private waste collection contractors will continue to provide their service to their trade customers before 10am each morning.

The council also helps fund policing for Skandia Cowes Week, to ensure visitors and residents can safely enjoy the event.



WORLD FAMOUS for its annual regatta and maritime history, Cowes, with East Cowes and the neighbouring areas are represented by nine councillors on the Isle of Wight Council.

In this feature we give details of the Isle of Wight councillors as well as the parish and town councils and management committees, for these areas.

## Cowes Town Council

**Members:** Lora Peacey-Wilcox, Ada Leigh, Rosemary Lynden-Bell, David Jones, Anthony King, Paul Birch, Alan Wells, William Sanderson, John Leigh, Geoffrey Banks (mayor), Wendy Wardrop, Lynn Hammond, Richard Berry, Timothy Gladdis, Nicholas Holligan, Rebecca McGregor.

**Parish clerk:** Roger Hendey  
tel: 296987

## East Cowes Town Council

**Members:** Peter Lloyd, Denise Hill, Simon Walker, Margaret Prior (mayor), Margaret Webster, Robert Hooper, Morris Barton, Margaret Lloyd.

**Parish clerk:** G. Davies  
tel: 299082

email: [ecowes.townhall@btconnect.com](mailto:ecowes.townhall@btconnect.com)

## Gurnard Parish Council

**Members:** Paul Fuller, Katie Mairis, Marie Bugden, Sylvia Pain, Alan Jacobs, Bryan Salter (chairman), Richard Day, Pat Clayton.

**Parish clerk:** Rusty Adams,  
tel: 567522,  
email: [gurnardpc@tiscali.co.uk](mailto:gurnardpc@tiscali.co.uk)

## Northwood Management Committee

**Members:** Paul Fuller (chairman), Dave Miller, John Pullen, Colin Cramp, Peter Brooker, Eileen Palmerton, Roger Mazillius, Penny Elford.

**Clerk:** Maxine Yule  
tel: 297367  
email: [max@yule01.freemove.co.uk](mailto:max@yule01.freemove.co.uk)

## Whippingham Management Committee

**Members:** Fred Richards (chairman), Richard Haynes, Peter Legge, Ian Husbands, Charles Hancock, Mervyn Cox, John Kirwood-Slack.

**Clerk:** Sarah Powell  
tel: 07789 542429  
email: [sjpandco@hotmail.co.uk](mailto:sjpandco@hotmail.co.uk)

# Representing Cowes and East Cowes

We continue our focus on how residents' affairs are represented in areas across the Island, with a special look at Cowes and East Cowes



## Cowes and East Cowes connections

- Cowes has hosted (and sometimes been home to) many famous maritime personalities over the years, including: Sir Thomas Lipton (five times challenger for the America's Cup), former Prime Minister Edward Heath, various yacht-racing members of the Royal family, and of course more recently Olympic gold medallist



Shirley Robertson, and round the world yachtswoman Ellen MacArthur.

- In World War II the famous Cowes shipbuilding firm, J. Samuel White, built 317 ships, including 26 destroyers. The guns of White's-built Polish destroyer, *Blyskawica*, arguably saved Cowes from complete destruction during Luftwaffe air raids on 4 May, 1942.
- Founded in the early 1900s by Sam Saunders, East Cowes-based Saunders-Roe (which it eventually became) and its successor companies have built many different vessels, as well as aircraft, space launchers and hovercraft. It produced the 100-passenger Princess flying boat, first flown in 1952, and the British Hovercraft Corporation's giant SRN4 hovercraft, which operated across the English Channel.



PICTURED: Venture Quays, East Cowes is at the heart of a multi-million pound redevelopment project  
BELOW (left to right): Cowes Parade; Osborne House; and yachts off Cowes taking part in Skandia Cowes Week



LEFT: The B&Q/ Castorama, which Ellen MacArthur (inset) sailed single-handed round the world  
OPPOSITE: The Polish warship Blyskawica, which defended Cowes during World War II

[www.patrickeden.co.uk](http://www.patrickeden.co.uk)

## Cowes area councillors (Isle of Wight Council)

### Cowes Castle East

Alan Wells  
Tel: 297107  
Email: [Alan.Wells@iow.gov.uk](mailto:Alan.Wells@iow.gov.uk)



### Cowes Castle West

John Effemey  
Tel: 293030  
Email: [John.Effemey@iow.gov.uk](mailto:John.Effemey@iow.gov.uk)



### Cowes Central

Lora Peacey-Wilcox  
Tel: 247177  
Email: [Lora.Peacey-Wilcox@iow.gov.uk](mailto:Lora.Peacey-Wilcox@iow.gov.uk)



### Cowes Medina

George Brown  
Tel: 200909  
Email: [George.Brown@iow.gov.uk](mailto:George.Brown@iow.gov.uk)



### East Cowes North

Margaret Webster  
Tel: 298488  
Email: [Margaret.Webster@iow.gov.uk](mailto:Margaret.Webster@iow.gov.uk)



### East Cowes South

Muriel Miller  
Tel: 294853  
Email: [Muriel.Miller@iow.gov.uk](mailto:Muriel.Miller@iow.gov.uk)



### Gurnard

John Hobart  
Tel: 293788  
Email: [John.Hobart@iow.gov.uk](mailto:John.Hobart@iow.gov.uk)



### Northwood

Roger Mazillius  
Tel: 295556  
Email: [Roger.Mazillius@iow.gov.uk](mailto:Roger.Mazillius@iow.gov.uk)



### Osborne

Charles Hancock  
Tel: 07881 528995  
Email: [Charles.Hancock@iow.gov.uk](mailto:Charles.Hancock@iow.gov.uk)



**1272** Earliest record of East Shamlord, now East Cowes district.

**1413** First mention of 'Cows' (sandbanks).

**1575** Customs House established at East Cowes.

**1620** Earliest record of Cowes shipbuilding.

**1633** Ships leave Cowes to colonise Maryland, America.

**1700** Cowes shipbuilding yards established.

**1798** John Nash starts to build East Cowes Castle.

**1815** Church-funded schools open at Cowes and East Cowes.

**1820** First steamship for regular Solent crossings, Cowes to Southampton.

**1826** Cowes Week begins life as a three-day regatta.

**1827** Turner paints while a guest at Cowes Castle.

**1833** Royal Yacht Squadron founded at Cowes.

**1838** Northwood House, Cowes, is built.

**1845** Queen Victoria acquires Osborne estate.

**1850** Cowes has 1,000 people living in 'courts and alleys'.

**1851** Yacht race which leads to creation of America's Cup.

**1862** First railway line opened between Cowes and Newport.

**1921** First regular bus service between Cowes and Newport.

**1936** Saunders Roe opens new purpose-built flying boat works.



# Ten years at the heart of Ryde

**This month sees Ryde Help Centre celebrate its tenth birthday. Here help centre advisor Lois Smith takes a look at the key council presence it has provided at the very heart of the town**

SITTING AT the foot of the High Street near where it meets St Thomas's Square, Ryde Help Centre has given the people of the Island's largest town (in terms of population) their own important conduit to many different council services for the past decade.

The centre was opened on 16 July 1997 and since then has acted as a blueprint for other centres in key locations around the Island as well as a catalyst in helping revive the town.

The centre (originally called Ryde Management Centre) was created with two main purposes in mind – to act as a council presence in Ryde and to try to bring life back to a dull and flagging town centre.

The High Street location has proved a key to the success of the project, reminding residents and visitors that council information and guidance is available right at hand.

The centre was originally opened with a town manager and one other full time staff member, opening Mondays to Fridays and on Saturday mornings.

Each customer was logged when they came into the office, their complaint/query was usually dealt with on the day and then at the end of each month, the local councillor was given a print out of all the callers from their ward and what they called in about.

Another new concept was that the help centre advisor would take ownership of the query/complaint rather than just passing it on to the relevant council department. This

meant the customer was not passed from pillar to post on the phone trying to find the correct department who could deal with them. Close to 90 per cent of queries were resolved at the first point of contact on the same day.

The centre was designed to achieve a relaxed, informal, yet efficient atmosphere, where customers could not only deal with problems relating to council issues but also non-council issues.

One of the help centre's first tasks when it was set up was to decorate empty shop windows in partnership with local schools, making a big difference to image of the town.

The centre has grown and evolved in line with customer demand. Today it has the equivalent of four full time members of

staff, two from the Revenue Services Division dealing with housing and council tax queries. The average number of customers the staff helps each month is 2,000. Customer satisfaction surveys show what a valued service Ryde Help Centre provides.

The centre is also home to the Inland

Revenue, which runs an outreach service two days a week giving advice on tax credits and tax issues, and the Citizens Advice Bureau which operates three times a week by appointment.

A key role the centre has played is in brightening up the town – introducing the hanging basket scheme to add colour and interest to lampposts, and large containers to offer spectacular displays in prominent locations. It also played a part in helping with one of the first Christmas carnivals, back in 1999, in conjunction with late night Christmas shopping events.

As the centre enters its second decade its staff remain as dedicated and determined as ever to bring the people of Ryde a first rate doorstep service on behalf of the council.



TOP: Some of the help centre team (left to right), Vicki Bailey, Mel Turner, Donna Stevens and Lois Smith  
LEFT: Ryde Help Centre



# Keeping our pets under control

Many residents have asked the council to step up its action on dog control. Here we explain some of the measures that are taking place

DOGS MAY well be man's best friends – but that doesn't mean their owners do not have a responsibility to control their pooches.

Problems with dog mess were frequently raised by residents during recent council consultations – and as a result firm action is being taken to address the issue.

New dog ban signs at Island beaches is one measure being taken, and the council has employed two new enforcement-based dog wardens to make sure dog owners comply with fouling and beach legislation.

Anyone failing to pick up their dog's mess and dispose of it correctly can receive a Dog Fouling Fixed Penalty Fine of £50. If a person re-offends, the council may take legal action in the magistrates court where the maximum fine is £1,000.

Dog owners must be in control of their animals at all times, even when off the lead. Dogs must be kept safely on a lead when walking by any road. Even the best trained dog may react to anything unusual and that could cause a traffic accident. Failure to do so can mean a fine of up to £100.

Between 1 May and 30 September each year, dogs are banned from a number of Island beaches. Notices are clearly displayed at each of these locations. Anyone caught on these

beaches with their dogs faces a fine of up to £500.

Beaches where this ban is in place are Cowes, East Cowes, Freshwater, Gurnard, Ryde West, Ryde East, Ryde Puckpool and Springvale, Sandown, Sandown and Lake, Seaview, Shanklin, Ventnor and Yarmouth.

Dog owners on these beaches outside the restricted season are still expected to pick up after their dog at all times. The same applies to non-restricted beaches all year round. Dog owners must pick up after their dogs. Failure to do so means a £50 fine.

Stray dogs should be reported to the dog warden service on 821000. If you have lost your dog also contact the service as they may already have it in their custody.

For a small fee, the council can also arrange for dogs to be chipped which can help re-unite lost animals with their owners.



A new campaign by the council's environmental health department aims to rid Island workplaces of dangerous sub-standard ladders. Here we explain what it involves

# Exchange your ladders!

ISLAND ENVIRONMENTAL health officers have organised a special exchange scheme – part of a national safety campaign – to remove dodgy ladders from workplaces.

For a limited period businesses will have the chance to take their ladders to Newport businesses HSS Hire (until end of July) or Speedy Hire (until end of December) to get them checked and where necessary, traded in for new ones at a discounted price with a voucher (*see below*).

Every month in the UK, nearly 100 people fall off a ladder at work and suffer serious injuries costing the economy £60 million each year. In recent years, there have been two fatal incidents involving ladders on the Island.

During the campaign, environmental health officers will also be visiting a number of High Street shops to ensure their ladders are safe and staff know how to carry out checks and work on them safely.

Senior environmental health officer, Matthew Northard, said: "When it comes to increasing ladder safety, there are three key questions: do you need a ladder or should you use something different, is it the right ladder and are you using the ladder safely?"

To obtain a voucher for a discount you can either visit or contact Environmental Health at Jubilee Stores, The Quay, Newport, Isle of Wight PO30 2EH, tel: 823000, or download them at [www.iwight.com/ladderexchange](http://www.iwight.com/ladderexchange)

• More information can be obtained on the HSE ladder exchange website [www.hse.gov.uk/falls/ladderexchange.htm](http://www.hse.gov.uk/falls/ladderexchange.htm) or on [www.iwight.com/ladderexchange](http://www.iwight.com/ladderexchange) or by contacting environmental health.



# A handy guide to your recycled waste

"The council is committed to improving the levels of recycling and waste reduction on the Island. Knowing what happens to our waste is important in reassuring us all that our dedication to recycling makes a real difference."

*Councillor Tim Hunter-Henderson, cabinet member for environment and transport*

In the March issue of *One Island* we gave a broad picture of what happens to our recycled domestic waste on the Island once it is collected via kerbside boxes, green sacks and kitchen caddies. But many of us probably don't know where exactly this waste is taken for recycling and how it is converted for re-use. Here Sarah Buttress, the council's recycling officer, takes us through the process

THE COUNCIL, in partnership with Island Waste Services, has a whole series of initiatives to recycle and reduce our domestic waste.

These schemes include the islandwide collection of domestic waste that residents set aside for recycling in black boxes and kitchen caddies.

There are also three household waste recycling centres (civic amenity sites) on the Island where householders can take items not collected with their normal weekly refuse collections.

This is what happens to our recycled waste and how it is treated:



## Glass

There are many different types of glass but the only glass items we collect to recycle are bottles and jars – these are known as soda-lime glass.

Colour-separated glass is known as cullet.

The cullet from the Island is transported to Harlow, Essex where it is recycled and made into new bottle and jars.

Using cullet has many environmental benefits: it preserves the countryside by reducing quarrying, and because cullet melts more easily, it saves energy and reduces emissions.

It is important that glass colours are not mixed and that the cullet is free from impurities, especially metals and ceramics.

Glass can be recycled again and without deteriorating in quality.



## Newspapers and magazines

Although virtually all types of paper can be recycled we collect only stapled magazines and newspapers in the black kerbside box.

It doesn't affect the recyclability of the paper if it gets wet.

The recovered paper is then bulked up and taken to SCA Recycling, Portsmouth.

From here it is sorted and graded if required and taken to a domestic paper mill for the paper to be pulped and made into newsprint.

Paper cannot be recycled again and again because the fibres become shorter and too weak to be made into paper.



## Textiles

Textiles made from both natural and man-made fibres can be recycled.

Placed in either the black kerbside box or in a textile bank they are collected and transported to Portsmouth.

From Portsmouth the textiles are transported to a textile merchant in Northampton.

At the merchant they are graded – approximately 85 per cent are sent abroad to where they are required.

The remaining 15 per cent that are not suitable for onward transportation are sold to the 'flocking' industry. Clothing is shredded for fillers in car insulation, roofing felts, loudspeaker cones, panel linings, furniture padding etc; woollen garments are sold to specialist firms for fibre reclamation to make yarn or fabric; and cotton and silk are sorted into grades to make wiping cloths for a range of industries from automotive to mining, and for use in paper manufacture.





## Aluminium cans

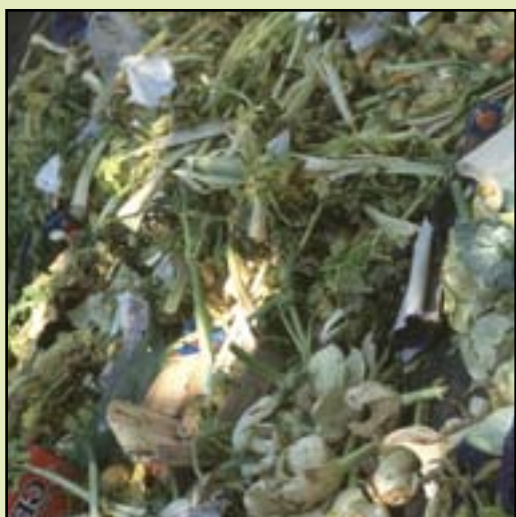
Cans are collected at local bottle bank sites, by Haylands Farm, or extracted mechanically at the resource recovery facility at Forest Park, Newport.

They are then squashed into bales and transported to the mainland.

The cans are then taken to Europe's largest dedicated used aluminium beverage cans recycling plant in Warrington.

Recycling aluminium requires only five per cent of the energy and produces only five per cent of the carbon dioxide emissions compared with primary production.

Aluminium can be recycled indefinitely without losing any of its properties.



## Food waste

Food waste is collected weekly in the green caddy from your doorstep and is taken to Lynnbottom in-vessel composting plant, Briddlesford Road, Newport.

The waste is processed through a trommel screen, which removes the plastic bags.

The food waste is mixed with fine rejects from the resource recovery facility and some

shredded green waste before being fed into one of the three composting tunnels.

The waste is totally contained for 14 days and the high temperatures obtained eliminate pathogens.

After this time it is used as a soil or rubble substitute for daily landfill cover.



## Steel cans

Although put in the normal refuse, steel cans are removed by a powerful magnet.

The cans are baled and transported to a metal waste and scrap dealer in Wales where the bales are put into a furnace.

Steel cans are 100 per cent recyclable and could end up as bicycles, cars, paper clips or food/drink packaging.

Recycling one tonne of steel saves 80 per cent of carbon dioxide emissions produced when making steel from iron ore.

- More information about how your waste is recycled can be obtained from:

**The Isle of Wight Council**

tel: 821000, website: [www.iwight.com](http://www.iwight.com)

**Island Waste Services**

tel: 821234, website: [www.islandwaste.co.uk](http://www.islandwaste.co.uk)

# Look out for the new recycling bins

A new generation of recycling bins has been introduced in four Island locations.

They are called Rescape Units and cost £12,000 each.

The bins were purchased by the council using a grant (from the Department for Food and Rural Affairs) in recognition of the Island's excellent performance in recycling.

The new units can receive three colours of glass, as well as textiles and aluminium cans, and have been designed to be attractive to the eye and practical and easy to use.

The Rescape units are sited at St Martin's Road car park, Wroxall; Warne's Lane car park, Brighthorne; River Road car park, Yarmouth; and Steyne Road car park, Bembridge.

"As well as being more pleasing on the eye than traditional older recycling units, the new units also contain features that should make them resistant to vandalism," said Sarah Buttress, the council's recycling and waste minimisation officer.

"I hope that the high impact nature and contemporary design will spark interest and talk about recycling and other environmental issues.

"The units are also extremely safe. Each is chemically bonded and secured in place. Each door contains a wheelie bin but is locked and therefore minimises the chances of vandalism and arson attacks."





## Nature notes



High summer in the Island's countryside and wild places – have you seen any 'horse stingers' (dragonflies) or 'devil's darning needles' (damselflies) about? They are on the wing between June and September, in sunny or warm and humid weather. More than 20 species are regularly seen here.

Their rather ferocious appearance is the origin of their old names.

Dragonflies are the more robust-looking ones, with large eyes and two pairs of broad translucent wings held out at right angles to their brightly coloured and patterned bodies. They patrol their territory on the look-out for prey – small flying insects that can be scooped out of the air by their legs and passed to their large jaws. Damselflies

are generally more delicate, and rest with their gauzy wings folded over their body.

The adults live for about three weeks and exceptionally up to eight weeks. They need water to breed, and are seen along streams and ditches or over ponds and damp meadows. Often a male and female fly together 'in tandem', before laying eggs in mud or water, or on plants. After the eggs hatch, the young nymphs spend up to two years in water. They are fierce predators at this stage too – sometimes being called 'water-tigers'. When they are ready to emerge as adults, they climb on to the leaves of plants such as reed mace and yellow flags and secure themselves firmly. The outer skin splits along the back and the adult emerges gradually allowing its skeleton to harden, and its wings to expand.

Anne Marston,  
assistant ecology  
officer



ABOVE: A damselfly  
LEFT: A broad bodied chaser dragonfly

## Learning about landslides online

The council's centre for the coastal environment at Ventnor has become a partner in a web-based project to assist teaching about earth science and hazards like landslides and cliff and beach erosion.

The OIKOS project is funded by the European Union and involves using a web-based game (pictured) to explain such issues to schools.

The mechanism and impact of each natural hazard is explained and students are given the chance to simulate the phenomenon using special software, including Google maps.

OIKOS project teaching tools are being



tested in schools across Europe. Details can be found at the project website at [www.e-oikos.net](http://www.e-oikos.net) or by contacting Peter Marsden, principal coastal engineer, on 857220.

## Ventnor Undercliff to provide data for European project



The Ventnor Undercliff landslide complex is one of seven locations providing key data for a new two-year European Commission project.

The FRANE project (Future Risk Assessment as a New European approach to landslide hazards) is being led by the University of Sannio, Italy and involves a multi-national partnership, including the council's centre for the coastal environment.

The project was launched at the international conference on landslides and climate change held at Ventnor in May.

Landslides affect many areas in Europe and can have a very large influence on populations, infrastructure and the environment.

The FRANE project will focus on landslide management, with data from seven landslide complexes being used to assess risks in different situations.



If you have nettles in a sunny place it is a good idea to cut back some of the growth. This will encourage fresh new shoots to grow on which the next generation of small tortoiseshells, red admiral and peacock butterflies can lay their eggs.



**Push the Boat Out - an exhibition of maritime themed art at Quay Arts, Newport, 18 July to 8 September**



## ACTIVITIES

### Craft Workshops

(22 June – 3 August)  
Workshops at Wightcat Crafts, 14 Carisbrooke Road, Newport, booking in advance essential (tel: 527525).

### Book Fair

(22 July)  
A book fair featuring postcards and ephemera, Village Hall, Bembridge, 10am to 3.30pm.

### Sandown Carnival

(22-26 July)  
Sandown Carnival Week, starts on Sunday 22 July with carnival songs of praise, children's carnival (Tuesday 24 July, 2.30pm), main parade (Wednesday 25 July, 7pm), at Sandown town centre.

### Edwardian Garden Party

(11 August)  
An event in aid of Whitwell Village Hall upkeep, with afternoon tea, raffle, prizes for best costume, ladies

bonnet and men's buttonhole, lawn games, entrance £2 (children under 14 free), at The Old Rectory Garden, Whitwell, 2.30pm to 5pm, in the event of bad weather Whitwell Village Hall will be the venue.

## EXHIBITIONS

### Sarah Hand, Becoming Emily

(22 June – 12 August)  
Exhibition at Dimbola Lodge Museum, Freshwater Bay, for details tel: 756814.

### John Nicholson, Inside Ferrari

(29 June – 9 September)  
Exhibition at Dimbola Lodge Museum, Freshwater Bay, for details tel: 756814.

### Broken Vessels

(30 June – 25 July)  
Exhibition of sculpture, drawings and paintings by Colin Riches, at Sts Thomas Church, Newport, 10am to 3pm (12 noon to 3pm on Sundays).

### Crossing the Water

(30 June – 11 August)  
Island-based painter Lisa Traxler uses the abstract to describe the energies, tensions and struggles between the canvas and the artist, Rope Store Gallery, Quay Arts, Newport, Monday to Saturday (9.30am to 5pm), Tuesday (until 8pm), entry free.

### Art Exhibition

(1-31 July)  
Exhibition of paintings by the Wednesday Art Group, The Troubadour Café, High Street, Ventnor, 10am to 4pm daily (except Sundays/Mondays), admission free.

### Bembridge Camera Club Exhibition

(2-28 July)  
Annual exhibition of members' work, Bembridge Library, normal library hours.

### Fancy Knots and Rope Work

(3-27 July)  
Display of knots by John Steggles, at Freshwater

Library, normal library opening hours.

### Push the Boat Out

(18 July – 8 September)  
An open exhibition at the Café Wall, Quay Arts, Newport, featuring maritime works in different media.

### Ventnor Botanical Artists' Annual Exhibition

(21-26 July)  
Annual exhibition of original watercolours by Ventnor Botanical Artists, at the Visitors' Centre, Ventnor Botanic Garden, 10am to 5pm.

### Art Exhibition by Suzanne Whitmarsh

(27-28 July)  
An exhibition of paintings,

contemporary art for modern interiors, acrylics on boxed canvas, prints and cards, Bembridge Village Hall, 9am to 5pm.

### Barbara Newman Painting Group

(28-29 July)  
Exhibition of paintings at Yarmouth Town Hall, 10am to 5pm, all subjects (in oils, watercolours, pastels and acrylics) for sale, also showing sculptures by the Juliet Collins Sculpting Class.

### Going Back to My Roots

(28 July – 12 August)  
Exhibition of traditional quilts and quilting history, by Vectis Quilters, at Echium

Terrace, Ventnor Botanic Garden, 10am to 4pm, admission free.

### Exhibition of Paintings

(3-29 August)  
By Michael Glover, Freshwater Library.

### Art on the Lawns

(9 August)  
Exhibition by local high school students, artists and galleries, featuring fine art, photography, glass work and sculpture, organised by a local sixth former (Carisbrooke High School), free entry for viewing, at Northwood House, Cowes, 11am to 6pm.

### Bembridge Art Society - 35th Annual Exhibition

(5-11 August)  
Exhibition of members' paintings in oils, watercolours, pastels and acrylics, most for sale, Bembridge Village Hall, 9.30am to 5pm, admission free.

### Arts and Crafts on the Lawn

(15 August)  
At Freshwater Library, 10am to 4pm.

### Bembridge Beaux Arts

(19-21 August)  
A vibrant mix of paintings, photography and sculpture by more than a dozen local artists, art work for sale, Bembridge Village Hall, 9am to 6pm, drinks reception on 18 August (7pm to 10pm).

## Advertisement

**Buy your family a new AGA Cooker**

**Better food, a warm kitchen and happy meal times**

**Why not drive in and see us ?**

**Also Bathrooms, Calor Gas and Heating and Plumbing Supplies**



**523041**

**28 Daish Way Newport ( off the St Mary's Roundabout )**



## Future issues:

Issue date	Listings period covered	Deadline for submission
17 August	17 August to 2 November	23 July
19 October	19 October to 7 December	24 September
23 November	23 November to 4 January	22 October
21 December	21 December to 14 March	26 November

## EXHIBITIONS

### Exhibition of Artwork

(22-28 August)  
An exhibition by the Island Art Society, Masonic Hall, Seaview, 9.30am to 6pm, admission free.

### Island Open Studio Event 2007

(24-26 August)  
Abstract painter Lisa Traxler opens her studio along with fellow artist Garry Whitehead, to show a colourful mix of contemporary work, The Studio, East Quay, Kite Hill, Wootton, 10am to 5pm.

## MUSIC

### Newchurch Male Voice Choir Concert

(24 July)  
The choir's 40th anniversary variety concert, with Wight

Satin ladies barbershop, Gino di Felice accordion, the IOWYCB Jazz Sextet, Shamrock and Thistle dancers, Teresa Wilkie soprano, at Medina Theatre, Newport, 7.30pm, tickets from theatre box office, tel: 527020.

### Mottistone Jazz

(28 July)  
At Mottistone Manor, gates open 6.30pm, telephone credit card bookings to Brighstone National Trust shop on 740689.

### Cowes Week Seafarers' Services

(5 August)  
At Holy Trinity Church, Cowes, for representatives of seafaring groups (11am) and regatta service (6pm).

### Organ Recital

(15 August)  
An organ recital/duet by Maureen McAllister (former deputy organist, Westminster Cathedral) and Robin

Jackson (former director of music, University of Bath), with music by Rutter, Handel, Bizet, Bedard, Callahan and others, at All Saints' Church, Freshwater, 7.30pm.

## SHOWS

### RNLI Bazaar

(20 July)  
A wide variety of stalls, bring-and-buy, raffle, at Lower Marquee, Island Sailing Club, Cowes, 10.30am to 4pm, entry £1 to include summer drink and shortbread, lunchtime concert (12 noon to 2pm).

### Isle of Wight Jigsaw Puzzle Festival

(4-11 August)  
Hundreds of completed jigsaw puzzles on display and for sale, St James' Church, East Cowes, 10am to 4pm daily, 6.30pm to 8.30pm Wednesday and Thursday evening.



**Isle of Wight Jigsaw Puzzle Festival, St James' Church, East Cowes, 4 to 11 August**

## SPORT

### Skandia Cowes Week

(3-11 August)  
See event website for details, [www.skandiacowesweek.co.uk](http://www.skandiacowesweek.co.uk)

## THEATRE

### The Comedy of Errors

(2-3 August)  
By William Shakespeare, open-air theatre at Ventnor Botanic Garden, performed by Theatre Set-up, 7.30pm, advance bookings in person at tourist information offices, telephone credit card bookings tel: 863151 or The Jazz Festival Office

on 856206/856200, picnics welcomes, bring your own rugs, folding chairs.

### The Hound of the Baskervilles

(3-4 August)  
By Sir Arthur Conan Doyle, open-air performances at Northwood House, Cowes, 7.30pm, gates open 6.30pm, box office tel: 289842, seating not provided.

### The Pied Piper

(10 August)  
An Openwide Children's Theatre performance at Mottistone Manor Garden, suitable for children aged four to 11 and their families, tickets £5 or four for £15, ages four and under free, more

information and tickets from Brighstone National Trust shop on 740689.

### Treasure Island

(26 August)  
By Robert Louis Stevenson, open-air performance by Quantum Theatre at Northwood House, Cowes, 7.30pm, gates open 6.30pm, seating not provided, bring a picnic.

### Little Shop of Horrors

(28 August - 1 September)  
A performance at Trinity Theatre, Cowes, box office open daily (11am to 2pm) from 17 August (except Sundays).

## Trailers

These listings are provided free, as a public information service. Details must be submitted either by:

**filling out this form, or emailing your details to [oneisland@iow.gov.uk](mailto:oneisland@iow.gov.uk)**

Please conform to the format shown. Entries are included at the editorial team's discretion.

**Deadline for the next issue: 23 July (17 August publication date).**

Title of event/activity:

Date:

Brief description:

Venue:

Time:

Contact name:

Telephone:

**Please return to:**

**Trailers, One Island, Publications Unit, County Hall, Newport, Isle of Wight PO30 1UD**  
or email to [oneisland@iow.gov.uk](mailto:oneisland@iow.gov.uk) no later than 23 July 2007