

oneIsland

The community
magazine for the
Isle of Wight

Issue 33
September 2011

A new era for Island schools

Pupils celebrate
landmark project

Also inside:
How your waste
collections will change

WELCOME



September edition of *One Island* magazine

Welcome to the September issue of *One Island* magazine. In this edition we feature a special three-page annual report section, giving you details of the council's finances in 2010/2011, the priorities we focused on, and our key challenges looking to the future.

This issue also marks

the start of the new era in education on the Island, with the launch of the two-tier primary and secondary school system and the significant changes at school sites to make this possible (see School Report, pages 10 and 11).

Also look out for the pages on the new waste collection arrangements due early in 2012,

and details about our consultation on future care provision for older people on the Island.



Advertising in One Island

More than 43,000 copies of *One Island* are distributed throughout the Island for each edition.

The magazine is published as an insert in the Isle of Wight County Press – with additional copies available in libraries, post offices, help centres, doctors' surgeries and other key locations.

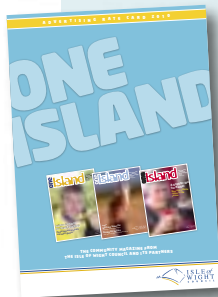
If you would like to

advertise in *One Island*, please contact us for more information and a copy of our rate card:

Tel: 823351;

Email: oneisland@iow.gov.uk

You can also download the rate card from iwight.com



How to contact us
If you have community news to share with other readers, we would like to hear from you. We also welcome your letters. You can contact us by post, email or telephone.



Post One Island, Resident Information and Consultation Unit, County Hall, Newport PO30 1UD



Email
Onesland@iow.gov.uk



Telephone 823105

USEFUL CONTACTS

Isle of Wight Council, County Hall, Newport PO30 1UD

Fax: 823333

Email:

customer.services@iow.gov.uk

Website: www.iwight.com

TELEPHONE SERVICES

Call centre: **821000**

Monday to Friday: 8am to 6pm

Saturday: 9am to 1pm

We recommend you contact the call centre initially, where we aim to answer as many enquiries as possible at this first point of contact.

Popular numbers

Automated phone payments	0207 1381970
Building control	823580
Council tax	823901
Education	823455
Environmental health	823000
Housing benefits	823950
Leisure services	823828
Libraries	203880
Licensing	823159
Parking services	823714
Planning	823552
Refuse collection	823777
Registrars	823233
Roads and highways	823777
Tourism	813813
Trading standards	823396
Consumer Direct	01622 626516
Wightbus	823782
Dial-a-bus	522226

Community services

Adult services	823340
(Adult duty, emergency)	534227
Children's services	525790
Local centres: Cowes	291144
Newport	823340
Ryde	566011
Headquarters	520600
Housing	823040

EMERGENCY NUMBERS

In an emergency dial 999

Fire and rescue control centre (24hrs) **525121**

Out of hours:

Highways **823187**

Waste disposal **0800 3283851**

Wightcare **533772/821105**

(out of hours)

All other council services **821105**

FACE TO FACE SERVICES

Newport Help Centre

Tel: 821000

County Hall, Newport PO30 1UD

Mon to Thur: 8.30am to 5pm

Fri: 8.30am to 4.30pm.

Ryde Help Centre

Tel: 812678

Ryde Library, 101 George Street,

Ryde PO33 2JE. Mon, Tues, Fri.

Sandown Help Centre

Council offices, Broadway,

Sandown PO36 9EA.

West Wight Help Centre

Tel: 756140

Freshwater Library, 41 School

Green Road, Freshwater PO40

9AP. Tues only.

Please ring 821000 to confirm opening times.

PARTNER CONTACTS

NHS Isle of Wight

Tel: (01983) 524081

Police

Tel: 0845 45 45 45

Rural Community Council

Tel: (01983) 524058

COUNCIL MEETINGS

All meetings are in public at County Hall. Call 823200 24 hours before a meeting to ensure it is going ahead.

Council

(council chamber)

19 October (6pm)

16 November (6pm)

Cabinet

(council chamber)

11 October (6pm)

8 November (6pm)

13 December (6pm)

Planning Committee

(council chamber)

1 November (4pm)

29 November (4pm)

20 December (4pm)

Audit Committee

(council chamber)

22 November (6pm)

6 December (6pm)

Licensing and General Purposes Committee

(council chamber)

24 October (4pm)

12 December (4pm)

Ethical Standards Committee

(council chamber)

28 November (6pm)

Employment Committee

(council chamber)

5 December (10am)

Overview and Scrutiny Committee

(council chamber)

27 October (5pm)

8 December (5pm)

Children and Young People Scrutiny Panel

(council chamber)

9 November (5pm)

Economy and Environment Scrutiny Panel

(council chamber)

23 November (5pm)

Health and Community Wellbeing Scrutiny Panel

(council chamber)

2 November (5pm)

CONTENTS



page 4

FIRST WORD Council and community news

- 4 New dinosaur species for Isle of Wight
- 4 All set for walking weekend
- 5 Remember to register to vote
- 6 New era for Ventnor Winter Gardens
- 6 Digital switchover advice
- 7 Remembering our fallen
- 9 Reviving muddy Seaclose

FEATURES

- 10 **School Report**
New schools for the 21st century
- 13 **Isle of Wight Council in 2010/2011**
Three-page annual report
- 16 **New waste collection service**
Looking ahead to January 2012
- 18 **Caring for older people**
Key questions about consultation

SUPPLEMENTS

- 20 **Hampshire Police Authority**
Policing priorities for the Island
- 22 **The Island's NHS**
Health service news
- 23 **TIME & PLACE**
Events and activities



page 6



page 9

page 16

Cover picture: St Francis Primary pupil Rio marks the start of building work on his new school at Ventnor (see page 10)

This magazine is available on request as an audiotape, in large print, in Braille, in other languages and online at www.iwight.com. For further details, please contact One Island on 823105.

ONE ISLAND is published by the Isle of Wight Council. The council does not accept responsibility for goods or services offered by advertisers. Additional copies are available from the Customer Service Centre at County Hall, libraries and other council facilities. Typetalk calls welcome.

Written, designed and produced by the Resident Information and Consultation Unit, Isle of Wight Council.

ISSN 1752-8038

© COPYRIGHT 2011

Isle of Wight Council,
County Hall, Newport,
Isle of Wight PO30 1UD.

Printed on paper from
sustainable sources by
Belmont Press.



When you have finished with this magazine please pass it on or recycle it



FIRST WORD



New Island dinosaur – out of Africa

A new species of dinosaur has been discovered by an Island fossil expert.

The find by palaeontologist Steve Hutt has been confirmed as a section of backbone from a giant plant-eating dinosaur from the Rebbachisaurid family (pictured) – also related to the better known Diplodocus of North America.

The fossil, which can be viewed at Dinosaur Isle at Sandown, was found in ancient rocks along the Island's southwest coast earlier this year.

The new species of dinosaur, yet to be formally named, had an unusually tall ridged back.

Its long neck was ideal to help it graze on the lush, nutritious flood plains it inhabited around 125 million years ago.

The creature would have roamed the land where North Africa is now – although the process of continental drift has moved this land to where the Island is situated today.

Steve, who is now retired as a curator at Dinosaur Isle but still offers voluntary expertise, said: "This find reveals the importance of the Isle of Wight in the evolutionary history of the dinosaurs and has also helped us to better document the process of continental drift."



All set for walking weekend

More than 60 themed and guided walks are in the schedule for the fourth staging of the Isle of Wight Autumn Walking Weekend, this year taking place from 21 to 24 October.

The popular walking weekend is an offshoot of the Island's award-winning annual walking festival held each May, and this year will once again feature some new themed routes for walkers of all ages and abilities.

All the walks during the council-organised event will be led by experienced

volunteers, and most will be free of charge.

To view all the walks online you can visit www.isleofwightwalkingfestival.co.uk

The list includes the 26-mile 'Beaches, bars and blisters walk', the spooky 'Shanklin Old Village ghost walk', and a coast and country walk with a pub lunch titled 'Sails, whales, tales and ales around Chale'.

If you are looking for somewhere to stay on the Island during the weekend, accommodation details are available at www.islandbreaks.co.uk

Isle of Wight Walking Festival 2012

Remember to put the dates in your diary for the 2012 annual walking festival, from 5 to 20 May.

Don't forget your seasonal flu jab



Island residents in at-risk groups are being reminded not to forget their seasonal flu vaccinations for this winter.

Jenifer Smith, director of public health on the Island, said: "It is vital that if you are in one of the at-risk groups or are in a position of infecting one of these people, you receive the vaccination, as this is your best protection against seasonal flu.

"Seasonal flu is a serious illness and it is important not to underestimate this."

A vaccination is vital every year as the flu virus may change on a regular basis.

Basic hand hygiene routines are also a key factor in fighting the spread of viruses.

If you are unsure if you are a high risk patient, talk to your pharmacist, nurse or doctor, or visit www.nhs.uk/flu for more information.

Seasonal flu factfile

- It is a common and often underestimated illness that occurs every year, usually during the October to April period.
- The virus is spread in small droplets of saliva, coughed or sneezed into the air.
- It can also be spread if someone with the virus touches common surfaces, such as door handles, with unwashed hands.
- You are more likely to suffer serious consequences if you are either over 65, pregnant, or have a chronic illness such as respiratory disease, diabetes, heart disease or other long-term conditions.
- Vaccination is free of charge to those in at-risk groups.



A new look at autism support

People with autism on the Island, together with their families, carers and healthcare professionals are being encouraged to help reshape the Isle of Wight Autism Strategy.

The council, which is developing the strategy, would like to hear of the experiences of those with, and involved with autism, to help improve the level of support on the Island.

A consultation will be launched in early November, with a survey for individuals with autism, as well as their parents, carers, relatives and professionals.

Following completion of the survey, titled 'Autism participation – have your say', an initial draft version of the strategy will be put together. There will then be the chance for individuals to comment on the draft strategy and submit further ideas.

- If you would like more information about the strategy and consultation, please contact Ann O'Brien, commissioning lead at the council, tel: 823340, email: ann.obrien@iow.gov.uk



Open day marks anniversary

A special open day was recently held by the Isle of Wight Crematorium at Whippingham to mark its 50th anniversary.

The open day, staged in conjunction with the Earl Mountbatten Hospice, featured a range of activities and demonstrations, and raised £1,298 for the hospice.

The day included: guided

tours of the crematorium, stonemasonry demonstrations, a chance to talk to cemetery friends' groups and bereavement groups, nature trails, floristry demonstrations and a mini auction.

There was also brass band and hand bell music.

The open day concluded with a memorial service led by the Reverend Graham Morris.

Remember to register to vote

Island households are being reminded of the importance of returning forms recently sent out as part of the annual canvass to update the register of electors.

The forms were sent to all 69,800 residential properties on the Island and will allow people to update the names of those registered as electors at their address.

Any changes will be reflected in the new register to be published on 1 December 2011.

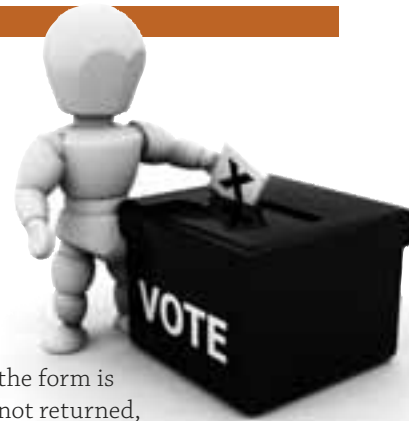
Even if there have been no changes to the people living in a household, it is vital the form is returned. It is a legal requirement to supply the information requested, and if

the form is not returned, people could be removed from the register and unable to vote.

Subject to approval by Parliament, 2012 could see Island residents going to the polls to elect a police and crime commissioner for Hampshire and the Isle of Wight.

The canvass form also allows you to request an application form to vote by post.

If your household has not received a canvass form, please telephone the Electoral Services office at the council on 821000.



ADVERTISEMENT

Where a University Degree in Business is not beyond your reach

Our part-time Business & Management Degree is designed for busy working people and is available once a week from Isle of Wight College and the University of Portsmouth.

It is open to those who may not have formal qualifications but whose work experience will have prepared them to succeed.

For further information visit

W port.ac.uk/busandman

E bus.admissions@port.ac.uk

T 023 9284 8200



www.port.ac.uk/pbs

New era beckons for Ventnor Winter Gardens



The currently-closed Ventnor Winter Gardens is set to be transformed and re-opened as a leading new dining and entertainment venue.

The council has agreed to sell the distinctive building for a nominal fee to local company, the Robert Thompson's Hambrough Group (RTHG).

The group, which already runs the award-winning Hambrough Hotel in Ventnor and the Pond Café in Bonchurch, plans to invest more than £1 million to upgrade the building, creating two restaurants, as well as developing the building's auditorium.

Longer term, there are plans to create

quality hotel accommodation on the site and possibly spa and exhibition facilities – bringing the total investment to more than £3 million.

A special panel of council officers and councillors (including Ventnor town councillors) selected the RTHG bid as the best of three submitted. Because investment of around £650,000 is needed to address the backlog of repairs, all bidders offered £1 for the building.

Under the terms of the deal, RTHG, which pledged to invest most significantly in the building, is required to retain the auditorium for community use for at least a decade.

It may seem a long way off, but from 7 March 2012, the Isle of Wight's terrestrial television signal will be turned off.

This means to continue receiving free-to-air channels

such as BBC and ITV, households will need a digital set top box or television with built-in Freeview.

For key information, Island residents are being advised to visit the 'Digital Switchover' website (www.digitaluk.co.uk, or tel: 08456 505050), as well as the Isle of Wight Council's Buy With Confidence website (www.iwbuywithconfidence.info).

Bill Murphy, the council's head of planning and regulatory services, said: "The switchover may still seem a long time away, but in fact it will be with us in less than six months.

"A typical digital box can be found for less than £20 and many televisions also have Freeview built-in these days, and these can be bought for less than £150."



The Buy With Confidence site can give advice on reputable retailers for people looking to buy a digital box.

It is known that some companies have been trying to take advantage

of unsuspecting households, particularly the vulnerable, charging excessive prices for set top boxes and unnecessary extra equipment.

- The BBC is also providing assistance, via the government-backed 'Help Scheme', aimed at the elderly and disabled. The scheme charges £40 for help, which includes providing an approved installer, easy-to-use Freeview equipment to convert one television set, and a 12 month aftercare service including a free helpline.

The service is free for people who are eligible and who also receive pension credit income support, income-based jobseeker's allowance or income-related employment and support allowance.

Environmental focus for major highways' scheme

Early 2012 will see the Isle of Wight Council select the successful contractor for the £260 million private finance initiative (PFI) to upgrade the Island's highways.

Integral to the scheme will be associated environmental and economic benefits for the Island.

The PFI project – using government grant to bring the network up to standard – has contract conditions built in regulating both the scheme's carbon footprint and water usage.

Failure to meet these targets will see the PFI contractor required to make financial penalty payments to the council.

As well as benefiting the environment, the arrangement will also encourage the contractor to use local labour and materials, providing significant economic opportunity for Island business.

An additional environmental benefit of the scheme comes through the complete overhaul of the Island's streetlight network, reducing energy consumption by 40 per cent.

The council is currently negotiating with three international companies/consortiums bidding to become its PFI partner.

Early in the new year, the council will select one bidder and negotiations will continue to ensure the best possible contract is agreed before actual work starts in 2013.

For more details on the highways' PFI, you can visit www.iwight.com/highways-pfi

Sign up to save on your oil-fired heating

Island residents are being encouraged to join a scheme which helps them buy cheaper oil to centrally-heat their homes.

The membership scheme is run by Island Community Ventures, the trading arm of the Isle of Wight Rural Community Council, and aims to cut prices by helping Island residents, community organisations and businesses through a combined bulk buying scheme.

Under the scheme, members place their order with a co-ordinator in their village or area, who then feeds the information to Island Community Ventures. These orders are then passed on to a national body, which negotiates



a bulk price for all members.

Orders and deliveries can take place on a monthly basis, and deliveries can be made more cost-effective by tankers visiting a number of different customers in an area at one time.

To find out more about the scheme and obtain a membership form, call 524058 or visit www.iwcv.co.uk

Remembering our fallen



A special field of remembrance will once again be opened this year to commemorate those in the uniformed services from the Island who lost their lives in service of their country.

The field was introduced in the Princess Beatrice Garden at Carisbrooke Castle last year – along similar lines to the remembrance area at Westminster Abbey in London.

The Island field was established by Lord Lieutenant Major-General Martin White as a place where residents can pay their respects for a period around the time of Remembrance Sunday.

The castle will open its doors for people to visit the field between 10am and 12 noon on Thursday 10 November and Friday 11 November. Residents can also visit on Saturday 12 November and Sunday 13 November, 10am to 4pm.

Bus company Southern Vectis is providing a free bus from Newport bus station to the castle at 10.30am each day.

A formal service of remembrance will take place at the castle on Thursday 10 November at 10.45am, which members of the public are welcome to attend.

ADVERTISEMENT

Fireworks, Shopping and a White Christmas

Cowes to Southampton return from only £7.80*

Autumn is a great time to visit Southampton, particularly if you are looking to get that Christmas shopping done early. You can check out big-name stores like French Connection, Hollister, Apple or John Lewis at WestQuay or bag yourself a bargain at IKEA. Don't fancy shopping? Check out the Guy Fawkes Firework Display in early November at Mayflower Park or get into the Christmas spirit early with Irving Berlin's White Christmas at the Mayflower Theatre from 11 November.

Plus if 2 or more travel after 11.15, it'll cost as little as £7.80 per person!*



RedJet

Call 0844 844 9988
Visit www.redfunnel.co.uk

*Terms and conditions apply. Red Jet fare is based on a minimum of 2 travelling together after 11.15pm.

LET IT SNOW!

Cavity wall &
loft insulation

for householders aged
70 and over or in receipt
of qualifying benefits

FREE!

Loft
insulation
from

£99*

Cavity wall
insulation from

£99*

Feather your nest in time for winter!
Book a free, no-obligation survey at
www.iwight.com/islandinsulation
or call 0800 015 2475.

Loft and cavity wall insulation can **save you as much as £390 per year¹** on fuel and is the most effective means of reducing heating costs.

*Prices may vary depending on size of property and other factors. For details on achievable savings, and full terms and conditions, please visit www.homeheatseekers.co.uk/iwight/prices or call 0800 015 2475.



Island
Insulation
Scheme

The Island Insulation Scheme is a home insulation scheme offering loft and cavity wall insulation to local residents who own their own home or rent from a private landlord. It is supported by the Isle of Wight Council.



¹The £390 saving over a one year period is made up from increasing your loft insulation from 50mm (about two inches) to between 250mm and 270mm (about ten to 11 inches) and installing cavity wall insulation. The cost saving is approximate, is provided for illustrative purposes only and is based on a 1940s gas heated semi-detached house with three bedrooms. Savings assume a gas price of 3.73p/kWh using a ten year old gas boiler. Your individual saving will vary according to the type and age of your house, the type and age of your boiler, the fuels you use in your home and whether or not you choose to take increased warmth following the installation of the insulation measures.

Pictured: Seaclose Park as it currently looks
Inset: The condition of the park after the festival

The green, green grass returns to Seaclose

An end of October date has been set for completion of the final works to repair parts of Seaclose Park at Newport – damaged during wet weather at this year's Isle of Wight Festival.

Heavy downpours during the event in June, combined with the presence of more than 60,000 festival-goers, created muddy conditions in some areas of the park.

Since the festival, council staff, local contractors and grounds' maintenance firm

John O'Conner have been working with event organiser, Solo, to restore the park to its pre-event condition.

Works have included re-seeding and treating existing turf. Drainage works undertaken several years ago prevented more severe damage to the ground.

As a result of the work carried out, several football pitches are already back in use, with the whole park due to be available from the end of October.



John Metcalfe, council deputy director for economy and environment, said: "Thankfully, although following the event the ground looked in a bad way, it was only the top surface that was damaged and careful restoration work has allowed the ground to be repaired quickly and efficiently."

ADVERTISEMENT

The island's preferred grounds maintenance service provider.

John O'Conner (GM) Ltd is an award winning provider of commercial grounds maintenance services with an unrivalled reputation for quality and value for money.

Now based on the Isle of Wight, we can provide the most competitive quote for the maintenance of your grounds.



John O'Conner
GROUNDS MAINTENANCE

Good grounds for quality and commitment

Tel: 01983 533 347
www.johnoconner.co.uk

Pictured: St Francis Primary School pupil Rio breaks the ground for building work on the new school site at Ventnor



New schools for the 21st century

This term has seen the start of a new era for schools on the Isle of Wight.

Thousands of pupils across the Island are now attending primary or secondary schools as part of the new two-tier system.

An extraordinary amount of detailed planning, organisational and construction work has gone into preparing Island school sites for the new structure.

The initial phases to prepare schools for the launch of the two-tier system have been successfully completed. Other phases, particularly involving refurbishment of some sites, or construction work to create entirely new-build schools, are either ongoing or just underway.

A whole range of projects have taken place to make ready the school sites:

- At Nettlestone Primary School an entire two-classroom extension has been completed in 19 weeks and opened for the new term.
- Key alterations have been completed at primary school

sites including All Saints at Freshwater, Arreton, The Bay at Sandown (two sites), and Barton at Newport.

- Mobile classrooms have been installed at various primary school locations – including Arreton, Carisbrooke Church of England and Northwood – and are now in use.
- A programme to redistribute many thousands of items of surplus furniture, equipment and teaching and learning resources from the closing middle school sites to primary and secondary schools, has been completed on time.

There is also a range of projects which are either ongoing or just underway:

- The £30 million Cowes One School Pathfinder scheme on the existing Cowes Secondary site is well ahead of programme. The roof has started to go on and cladding is underway on a new school that will provide a modern learning environment with extensive facilities, as well as an asset for the whole community. The new-look school is due to open for the 2012 academic year.

- Contracts have been signed and work has begun on two new-build £6 million primaries for Haylands Primary School (on the upper field of the old Swanmore Middle site) and St Francis Primary (on the former Ventnor Middle site). Haylands is due to be operational in September 2012 and St Francis in January 2013.
- Refurbishment work is continuing at former middle school sites which have closed to become primary schools, including Solent Middle (Gurnard Primary), Somerton Middle (Love Lane Primary), Osborne Middle (Queensgate Primary), Mayfield Middle (Greenmount Primary), Kitbridge Middle (Hunnyhill Primary), and Lake Middle (Broadlea Primary) – all due to be completed by Easter 2012.
- Work is due for completion this term to convert the gymnasium at the former Nodehill Middle in Newport into two new science laboratories for the new joint sixth form serving Carisbrooke and Medina secondary schools. In the interim the science labs at the former Downside Middle are being used. Other works at Nodehill include disability access improvements and a new lift.

The former Downside Middle site is also being used for a range of other interim purposes to maintain an education presence until pupil numbers in the area increase for the creation of a primary school on the site. These include housing the schools' music service and hosting a post-16 sports-related course for the Isle of Wight College and AFC Bournemouth.

At the former Ventnor Middle site, while construction work is taking place for the new St Francis Primary, the existing Rew Valley Sports centre will be run by the council's leisure services as an expanded community facility.

The centre will be fenced off from the construction site and will be available for school and community sports use, to include the sports hall, all-weather pitches and playing fields. There has already been interest from local sporting groups, and local cluster schools will act as the anchor tenants.



Pictured: Building work at Nettlestone Primary during the summer

Working with partners

Throughout the project, the council has worked closely with its framework partner, Willmott Dixon Construction, and with partner Pihl on the Cowes One School Pathfinder scheme.

Funding has been provided centrally by the Department for Education and the council has ensured that many Island-based contractors have also been involved in the work.

Project director for the council, Janet Newton, said: "The construction work for the new two-tier education system is probably the most intensive and forward-looking project ever undertaken in the education sector on the Island.

"Much credit should go to the Island contractors who have been working on these projects. A lot of the undertakings have been complex and time-constrained, and we are indebted for the way they have been carrying out the work to a high standard and to deadline."

More information

For more information about schools' reorganisation you can visit the 'Learning' section on iwight.com

For planning details about school building projects see 'planning online' on iwight.com

ADVERTISEMENT



WILLMOTT DIXON



Building for the Future

Working in partnership with the Isle of Wight Council, phase two of the reorganisation programme has been successfully completed in time for the new academic year.

For more information on Willmott Dixon visit www.willmottdixon.co.uk



From shore to shore, you'll find our stores.

York Avenue, East Cowes

Anglesea Street, Ryde

Pyle Street, Newport

High Street, Sandown

Landguard Road, Shanklin

Pier Street, Ventnor



FREE home delivery when you spend £25 or more.

The **co-operative**
good with food



/thecooperativefood



/cooperativefood

goodwithfood.co.uk

ANNUAL REPORT AND SUMMARY STATEMENT OF ACCOUNTS 2010/2011

Each year the council is required to publish its accounts to show the public how much money has been spent and in what areas.

This three-page feature provides a summary of the council's accounts for 2010/2011, the priorities during the year and the challenges for the future...

The financial year of 2010/2011 was an extremely difficult one for many local authorities up and down the country – including the Isle of Wight Council.

Against a national and international backdrop of tough economic conditions, the government reduced its funding for councils – which in turn increased pressure on local services.

As a result of reduced funding, the Isle of Wight Council is having to find around £33 million in savings over four years, with the bulk – some £18 million – required in 2011/2012.

To achieve the savings, the council has had to prioritise its finances in those areas for which it has a statutory duty – such as education – and those supporting the most vulnerable residents.

This has meant funding has ceased or reduced in some other areas. The council has also investigated working with communities and organisations to see if some services can be provided in a different way and at less cost.

Examples of this have been the work to assist community groups to take on the running of some libraries, while bus company Southern Vectis has stepped in to take on some of the functions offered previously by tourist information centres.

The summary accounts overleaf show that, despite the reduced grant from the government, the actual council budget grew from £361.818 million in 2009/2010 to £368.447 million in 2010/2011.

The main reason for this was because in 2010/2011 it cost more to provide services in the area for children and education (£151.753 million compared to £141.370 million the previous year). Adult social care costs were £60.434 million compared to £57.175 million the previous year.

These two statutory services accounted for 58 per cent of the council's budget in 2010/2011, compared to 55 per cent the previous year (a combined rise of three per cent or more than £13 million).

Our key priorities in 2010/2011

To help focus its resources on the areas most important to residents, the council set a list of key priorities. These were:

School reorganisation

A great deal of work was successfully undertaken during the year to put in place the arrangements for the move to a two-tier education system from September 2011. All work was carried out to schedule and within budget, and 90 per cent was undertaken by local companies.

Alongside this, the Island has seen improved results in both GCSEs and A-levels this year. At GCSE there was a rise of 5.1 percentage points in students achieving five or more A* to C grades, while at A-level the overall pass rate improved by just under one percentage point. There were disappointing overall Key Stage 2 results for middle school pupils – but it is hoped the new two-tier structure will help address this situation.



Highways' PFI scheme

In 2010/2011 a government grant of £260 million was confirmed, which will allow a major overhaul of the Island's highways' network. As well as bringing the Island's roads, footways and cycleways up to a high standard, the private finance initiative (PFI) will enable the council to deliver more cost-effective and efficient services in areas including street cleansing, verge maintenance, CCTV and street lighting.

The contract will be the first of its type to agree carbon and water footprints within which the PFI partner must operate. This encourages the contractor to use local labour and suppliers.



Transforming social care



The national target for assisting vulnerable individuals to move to personal budgets was achieved and the council remains on target to deliver personal budgets for all those eligible, by April 2013. A new partnership involving Age Concern IW was also selected as a 'user led organisation' to support vulnerable adults on the Island.

The council also established a community wellbeing and social care directorate to embrace the 'Think Local, Act Personal' agenda, which seeks to promote an individual's choice about how money is spent on their care.

Regeneration and the economy

In difficult national economic conditions, the council remained committed to work to assist the local economy through schemes including Pan Meadows at Newport and the highways' PFI.

The council gained a seat on the board of the new Solent Local Enterprise Partnership which means the Island is strongly represented on the successor body to the South East England Development Agency.

Also developed were proposals and a bid for government funding to set up a Solent Ocean Energy Centre that will create a facility to develop and test tidal energy equipment.

New developments in which the council played a part included the new Waitrose store in East Cowes and the new Vestas Research and Development facility at Stag Lane, Newport, while assistance has also been given to help GKN expand at Whippingham.



Fire service modernisation

The council embarked on a project to make the fire and rescue service more resilient through employing more whole-time personnel to reduce the reliance on retained (part-time) crews.

This project included the upgrading of Ryde Fire Station and the purchase of several new state of the art pumping appliances and other apparatus.

The service also won the British Quality Foundation's prestigious Southern England Excellence Award.



Local housing

During the year work began on the Pan Meadows project (*pictured below*), a scheme that will create hundreds of local affordable homes as part of a sustainable community development. The council was also involved in bringing back into use 321 properties that were previously empty.



Delivering better services

The council made significant progress in its aim to reduce the cost of providing services to residents – in the last financial year identifying an on-going reduction of £2.52 million of back-office savings.

This process included reducing the number of buildings from which it operates and developing internal shared services that will save £125,000 a year. A process to reduce the number of senior managers was also agreed.

Summary financial position for 2010/2011

In July 2010, the government announced an emergency budget and a comprehensive spending review. As a result, the council had to respond to reduced government funding mid-year, as well as anticipated budget pressures of £4.061 million in adult social care, £0.559 million in children's placements, and £0.592 million in school transport, and the impact of the economic downturn (in terms of reduced income from fees and charges, including £1.030 million in parking income).

To offset these, a number of measures were taken to control spending, address pressure areas and mitigate the immediate

impact of the emergency budget:

- An authorisation panel was set up to control recruitment, resulting in vacancy management savings of £3.384 million.
- A review of the performance and communications areas achieved budget savings of £0.293 million and a procurement moratorium and contract review delivered savings of £1.353 million.
- Reductions in interest paid from lower levels of capital spending, and the repayment of external debt contributed to a saving at the year end of £3.7 million.

Redundancy and other termination costs

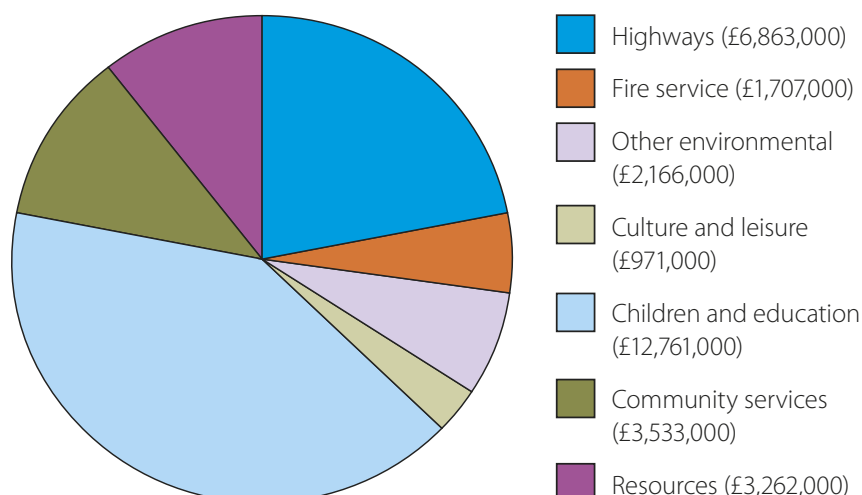
amounting to £2.669 million have also been taken into account while closing the 2010/2011 accounts. This relates to all costs incurred during 2010/2011, adjustments for staff who had received a termination letter from the council on or before 31 March 2011, and a provision for those staff identified as 'at risk' and for whom a reasonable estimate of likely costs could be made during the closure of accounts process.

In overall terms, the savings offset the additional costs incurred, leaving a net underspend of £787,000 in the budget at the year end. This amount therefore improves the council's general fund balance at the year end.

Where the money comes from	2009/2010		2010/2011	
Revenue funding sources	£000s	%	£000s	%
Dedicated schools grant	74,162	20.5%	76,371	20.7%
Formula grants	59,129	16.3%	61,397	16.7%
Other government grants	109,690	30.3%	116,781	31.7%
Council tax	69,012	19.1%	70,944	19.2%
Charges, rents, other income and adjustments	49,825	13.8%	42,954	11.7%
Total	361,818		368,447	

How we spent it	2009/2010		2010/2011	
Gross revenue expenditure	£000s	%	£000s	%
Culture, environment, regulatory and planning	43,857	12.1%	38,125	10.4%
Children and education	141,370	39.1%	151,753	41.2%
Housing services (including benefits)	64,844	17.9%	63,080	17.1%
Fire and rescue service	6,960	1.9%	8,328	2.3%
Adult social care	57,175	15.8%	60,434	16.4%
Highways, roads and transport	25,091	6.9%	22,649	6.1%
Core and democratic services	21,668	6.0%	21,377	5.8%
Non-distributed costs	853	0.3%	2,701	0.7%
Total	361,818		368,447	

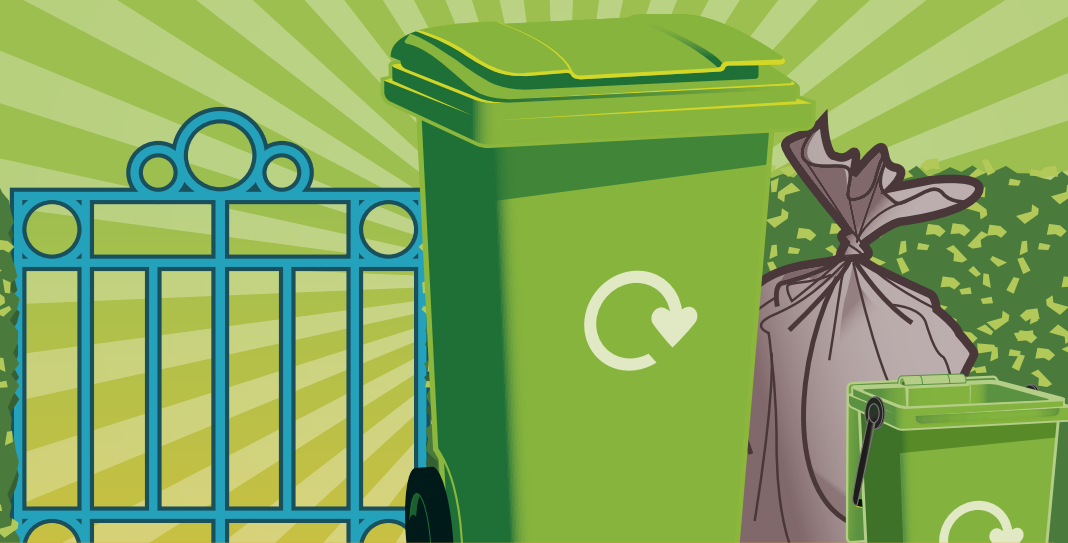
2010/2011 capital spending – Total £31,263,000



Statement by director of resources

The information contained in this summary is taken from the draft statement of accounts as at 30 June 2011, which is being audited by the Audit Commission – the government's public spending watchdog. A final opinion was due to be given by 30 September 2011, and a final version (amended as per the auditors' recommendations) will be approved by the council's audit committee and then published on *iwight.com*. I therefore certify that this summary statement of accounts presents a true and fair view of the financial position of the authority at the accounting date and its income and expenditure for the year ended 31 March 2011.

Important changes to your waste collection service



Changes to your waste collection

From 30 January 2012, the household waste collection service will change to improve recycling.

During January, residents will be sent detailed information about the new service. They will also receive:

- a 240 litre wheelie bin for recyclable (non-food) waste – to be collected fortnightly from the kerbside;
- two caddies for food waste (a small caddy for keeping in the kitchen, and a larger caddy with a secure lid for keeping outside) – the large caddy to be collected weekly from the kerbside.

For waste which cannot be recycled, residents will still need to provide their own sacks and bins.

This will be collected fortnightly from the kerbside and processed into fuel.

Have you told us if you think a wheelie bin is unsuitable for your property?

Wheelie bins may not be suitable for some properties and their recyclable waste will be collected in bags.

During early September leaflets were delivered to Island households about the new service explaining how to notify the council if you think wheelie bins are not suitable for your property.

If you did not receive this leaflet, and you consider your property unsuitable for a wheelie bin, and you have not yet contacted the council, you should do so immediately.

You can find the information online at www.iwight.com/waste and follow the link to the wheelie bin suitability form.

You can also text your house number, post code and “bags” to 07950 080788 (text charged at your standard network rate), or call 823777 during office hours.

We are currently assessing properties that we have been notified about, and households will hear from us by the end of November.

These changes to your waste collection service are essential if we are to radically improve recycling levels and offer greater protection to the Island’s environment. The new service is designed to significantly cut the amount of household waste going to landfill and as a result the cost to council taxpayers. Last year an estimated 42,000 tonnes was buried as landfill, with the council paying £1.8 million in landfill tax.

Collected – week one

Wheelie bin for recycling

- 240 litre wheelie bin.
- 1060mm high, 575mm wide, 730mm deep.

Food waste caddy (large)

- With a secure lid for keeping outside.
- 405mm high, 320mm wide, 400mm deep.



Collected – week two

Non recyclable waste

- Residents to supply own sacks and bins.

Food waste caddy (large)



Kept in your kitchen

Food waste caddy (small)

- 234mm high, 184mm wide, 149mm deep.



Bin sizes are indicative and colour is not yet confirmed.

The changes at a glance

	Existing service	New service
Food waste	Collected weekly (Small caddy) All cooked and uncooked food.	Collected weekly (Large caddy) All cooked and uncooked food.
Recyclable waste	Collected fortnightly (One 55 litre black box) Paper – some types. Glass bottles & jars. Textiles.	Collected fortnightly (One 240 litre wheelie bin) Paper – all types. Glass bottles & jars. Tetra paks. Plastics – all types. Cans. Card – all types.
Non recyclable waste	Collected weekly (Bag or bin provided by resident)	Collected fortnightly (Bag or bin provided by resident)
Garden waste	Collected weekly (Charged for collection) Unlimited number of pre-paid garden waste sacks.	Collected fortnightly (Charged for collection) Separate 240 litre wheelie bin or bags.

The long-term future for waste

The current household waste contract comes to an end in 2015, providing us with an opportunity to explore new ways of managing the Island's waste and diverting as much as possible away from landfill. We are in the process of developing a new waste strategy for how our waste should be dealt with in the future and that may include utilising new technologies. As well as increasing recycling, we will be looking at ways to treat waste as a resource from which we can generate heat and power for the Island. Residents will have an opportunity to review and comment on the strategy when it is put out for public consultation in February next year.

More details about the future waste strategy can be found at www.iwight.com/waste

Waste contract timeline



Look out for the December edition of One Island to find out more about what happens to your waste after it has been collected – or visit www.iwight.com/waste

Have your say

A major consultation is currently seeking views about care for older people on the Island. Here we explain how you can have your say and answer some key questions...



Why is the council carrying out the consultation?

The Isle of Wight Council is committed to supporting the Island's most vulnerable residents, including older people, and has identified a number of different approaches to their care which are used elsewhere in the UK and abroad.

These alternatives include extra care housing, homeshare, and initiatives such as telemedicine¹ and the Shared Lives scheme².

Such options are not intended to replace how the council currently supports people, but may offer

greater choice and better value for money for both the council and those receiving support.

The options are being considered against a background of the council reviewing all its services to see if they can be provided differently and more efficiently. The council's budget continues to be under pressure due to major cuts in government funding, but the authority remains determined to ensure services remain

available for those most in need.

To help the council consider what to do next, it has produced a market report looking at care for older people, which can be viewed at www.iwight.com/haveyoursay

The report identifies some of the different approaches to care support, the number of people who may need care in the future, and what is currently available on the Island – including the respite

and intermediate care facilities at The Adelaide at Ryde and The Gouldings at Freshwater.

The Island's changing population

By 2030 it is estimated there will be a major increase in the numbers of older people on the Island.

- The number of over 65s is projected to rise from 35,100 today to 53,400 by 2030 (52 per cent increase).
- The number of people with dementia may rise from an estimated 2,580 today to 4,743 by 2030 (83 per cent increase).
- The number of people over 75 may increase from 16,800 today to 29,400 by 2030 (75 per cent increase).
- The number of people over 85 may go up from 5,500 today to 10,900 by 2030 (98 per cent increase).

The Adelaide and The Gouldings

The Adelaide and The Gouldings provide planned or emergency short-term

Pictured: The Adelaide



¹ Telemedicine describes equipment and devices to help people who have problems with speaking, hearing, eyesight, moving about, memory, cognition (thought processes and understanding) or medication.

² The Shared Live scheme is where an individual lives in a Shared Lives carers' home and may require additional support to maintain their independence.

on care for older people



respite care, respite day care and intermediate care (or reablement).

Both centres work with people on an individual basis, either helping them to remain living independently or to regain as much ability as they can to live independently after an illness or injury.

Most people who use either the emergency respite care or the intermediate care (or reablement) return home after their stay.

The centres also provide other community activities, offer visiting services (such as hair dressers and chiropodists) and have an active league of friends who support them.

In 2010/2011 the centres provided short residential stays to 528 people and respite day care for 187 people.

If you would like to find out more about the two centres, please view the market report.

What has happened so far?

The council published the market report in July and invited service users, families, carers and the public to

give their general views on current and future care for older people on the Island (including the use of The Adelaide and The Gouldings).

This first, informal stage of consultation, which was widely publicised in the local media and through community groups, finished on **26 August**.

What happens next?

A new report is currently being drafted, based on the feedback gathered so far, which will be considered by the council's cabinet on **11 October**.

As well as the results of this initial feedback, the report will contain some specific proposals for the future of these services and a recommendation that the cabinet should consult with Island residents on these proposals before making a final decision.

The report will recommend a further 90 day period of consultation about these specific proposals, to take place between **17 October** and **14 January**.

Following analysis of all of the responses to the

consultation, a final report will then be presented to the cabinet for a decision on **14 February** next year.

How do I find out more about the proposals?

The proposals will be published on **17 October** on the council's consultations' webpage at www.iwight.com/haveyoursay.

You will also be able to pick up a paper copy of the consultation documents from County Hall reception at Newport, libraries, The Adelaide and The Gouldings, and GPs' surgeries.

Details of how you can get involved in the consultation will be advertised in the media and via community groups.

All the documents from the first stages of the consultation, including the market report, can be found on the consultations' webpage.

How do I make my views known?

From **17 October** you will be able to comment on the proposals by:

- email: social.care@iow.gov.uk;
- writing to: Care for Older People on the Isle of Wight (Adelaide and Gouldings), Adult Services HQ, 17 Fairlee Road, Newport, PO30 2EA.

More details will be available at www.iwight.com/haveyoursay

Please tell us your views by 14 January 2012.





Policing on the Island

Hampshire Police Authority is an independent organisation that ensures communities receive an effective, efficient and high quality policing service. Hampshire Constabulary provides day to day policing under the leadership of Chief Constable Alex Marshall. The Police Authority ensures that the Constabulary delivers the goal of making the two counties even safer places to live, work and visit.



Throughout the past year we have all been going through a period of unprecedented economic change. We have been working closely with the Constabulary for some time to see how Hampshire Constabulary can improve their performance while reducing costs. The drop in overall crimes last year of more than six per cent meant there were 8,570 fewer crimes which is a tremendous achievement especially in a year when the Constabulary also made an £11 million saving in preparation for the government cuts. Local residents and visitors can be confident that crime rates are falling and that Hampshire and the Isle of Wight are even safer places to live, work and visit.

Councillor Jacqui Rayment Chair, Hampshire Police Authority

Local results *Figures in bold are for 2010/11 and in brackets are for 2009/10*

IOW Operational Command Unit (OCU)

Number of crimes

9610 (8997)
An increase of 7% or 613 crimes

Number of dwelling burglaries

318 (247)
An increase of 29% or 71 burglaries

Number of incidents of rowdy and nuisance behaviour

3983 (4484)
A reduction of 11% or 501 incidents

Number of vehicle crimes

516 (440)
An increase of 17% or 76 vehicle crimes

Number of violent crimes

1240 (965)
An increase of 29% or 275 violent crimes

Residents satisfaction with service

70% (68%)

Percentages rounded to nearest whole number.

The Police Authority says:

"It was a tough year for policing on the Island, economic related crime has increased but crime levels are still lower than 3 years ago. Nonetheless the Police Authority expects the policing team on the Island to reduce crime levels whilst continuing to raise public satisfaction in the service."

Superintendent

Norman Mellors says:

"After three consecutive years of crime reduction I am disappointed to report that last year crime on the Isle of Wight increased on average by around two offences per day to 9,621 reports. This is still much lower than the 11,691 crimes reported in the base year of 2007. I am pleased to report that staff, officers and partners have worked well together to reduce anti-social behaviour by 11% or 498 reports. The Island remains one of the safest areas in the South and we are fully committed to working with the public and our partners to make it even safer."

How to contact us

Hampshire Police Authority

Westgate Chambers
Staple Gardens
Winchester
SO23 8AW

Tel: **01962 871595**

E-mail: police.authority@hampshire.pnn.police.uk

To see our publications, including the latest Annual Report and Policing Plan, visit:

Website:
www.hampshirepoliceauthority.org

You can also find out about us and our public meetings, which you are welcome to attend.

Hampshire Constabulary

In an emergency always dial 999

For non emergencies call
0845 045 45 45 or 101
www.hampshire.police.uk

Crimestoppers 0800 555 111

www.crimestoppers-uk.org

Victim Support Line

0845 30 30 900
www.victimsupport.org.uk

What are our policing priorities?

Hampshire Police Authority has a statutory duty to engage with the communities of Hampshire and the Isle of Wight to find out their community issues, concerns and policing priorities.

This ensures community views and opinions are reflected in future plans including the Policing Plan – a three year rolling document that sets the policing priorities for Hampshire Constabulary.

Hampshire Police Authority is still committed to the six strategic policing priorities of:

- Providing an excellent service
- An active presence in every neighbourhood
- Catching criminals and managing offenders
- Protecting our communities from crime and harm
- Making the most of our resources
- Equipping our team to deliver

Working with local people

Twenty-eight community events were held in 2010/11 and over 14,000 local people were surveyed to find out what people wanted the police to tackle. Your views helped us to focus on your priorities for the next policing plan and also helped us to improve the policing service that you receive.



What you wanted

We asked about your priorities and took action to tackle:

- Anti-social behaviour
- Criminal damage
- Alcohol and drug related crime

Cuts in crime/increase in residents' satisfaction

From 1 April 2010 to 31 March 2011 across Hampshire including Southampton, Portsmouth and the Isle of Wight:

- All crime **down 6%** (8567 fewer crimes)
- Rowdy & nuisance behaviour **down 15%** (10464 fewer incidents)
- Criminal damage **down 14%** (4081 fewer crimes)
- Vehicle crime **down 3%** (397 fewer crimes)
- Dwelling burglaries **down 6%** (341 fewer crimes)
- Violent crime (violence against the person with injury) **down 4%** (643 fewer crimes)
- Knife crime **down 19%** (106 fewer crimes)

However, the detection rate for serious and acquisitive crime (robbery, household burglaries and vehicle thefts) was 2% short of the 15% target but the Authority is scrutinising the Constabulary's meeting of the target in 2011/12.

Percentages rounded to nearest whole number.



Value for money – high quality, low cost efficient policing

By 2015 Hampshire Constabulary intends to be a low cost, high achieving force and one of the best value for money forces in the country. Hampshire Police Authority has been working for a number of years with the Constabulary to help them work towards this goal.

The Constabulary not only made an £11 million saving during the year as it prepared for government spending cuts, but also achieved significant improvements in performance.

The Police Authority and the Constabulary were fully prepared for the cuts and we have been working together for a number of years taking steps to meet the challenge. The Police Authority and the Constabulary have planned under-spends totalling £16 million in the last two financial years to build reserves to smooth the funding loss and provide for the cost of change.

Choose well this winter

With winter approaching you can help us to ensure that we can treat all those patients that need our services.

If you have a problem which is minor or can wait, please consider visiting your GP or local pharmacy for support or advice. Looking up information online can help as well – we recommend the NHS Choices website at www.nhs.uk

Mr Robin Beal, emergency department consultant at St Mary's Hospital, said: "With high demand on health services over the winter months it is vital that we all choose the right health service at the right time. Everyone should consider whether they really need emergency assistance. A visit to a community pharmacy or GP during normal opening hours for non-urgent conditions is maybe more appropriate."

NHS 111 is coming

NHS 111 is a new service being introduced to the Island this autumn to make it easier for you to access local NHS healthcare services and when you need medical help – but it isn't a 999 emergency. You can find out more at www.nhs.uk/111



Excellent, Excellent and Excellent

National results for the Patient Environment Action Team (PEAT) assessment published by the National Patient Safety Agency (NPSA) on 31 August showed that patients on the Isle of Wight receive care in a first class environment, are provided with high standard food and are treated with dignity and respect. Every healthcare facility in England is assessed annually, focusing on non-clinical aspects of patient care and given a rating of excellent, good, acceptable, poor or unacceptable. Both St Mary's Hospital and Whitelodge in Newport have improved their previous scores and scored excellent across all areas. Visit www.ic.nhs.uk/pubs/peatresults2011 for more information.

Supporting the NHS

Many Islanders support the NHS by recognising good service through donations and legacies, or by volunteering. You can find out more about supporting your local NHS by visiting the charity section of our website at www.iow.nhs.uk/charity, or for volunteering by visiting www.iow.nhs.uk/volunteer

We also have a page on Just Giving at www.justgiving.com/iow-nhs.

If you are interested in volunteering for the NHS then contact our new volunteer co-ordinator on 822099 (ext: 6246) or email: volunteer@iow.nhs.uk

All change for the NHS

Planning is advanced for significant changes to the organisation of healthcare on the Island.

The passage of the Health and Social Care Bill through Parliament may not be of interest to many Islanders but for all who work in healthcare it will have a significant impact.

Since 2006 the NHS on the Island has been managed by one organisation, the Isle of Wight NHS Primary Care Trust. This is all set to change from April 2012 when the majority of services covering ambulance, community health, mental health, prison healthcare and those at St Mary's Hospital are to be established as a separate NHS Trust.

This will bring services into line with the rest of England, but has only been supported following an extensive options appraisal to establish that the Island can support an organisation that is clinically and financially sustainable. We are currently working closely with stakeholders, voluntary organisations and patient representatives to redesign our services to ensure that they meet these two requirements. You can find out more at www.iow.nhs.uk/nhstrust

The commissioning of services for Islanders will in the future be the responsibility of the Isle of Wight Clinical Commissioning Group (CCG) and the National Commissioning Board. The CCG comprises all GP practices on the Island and is led by six Island GPs. It is part of the cluster of primary care trusts covering Southampton, Hampshire, Isle of Wight and Portsmouth (SHIP) – see www.iow.nhs.uk/ccg

Under the government's plans, the commissioning of public health services will be transferred to the NHS Commissioning Board, Public Health England and the Isle of Wight Council. Local services will be provided by the NHS and council (visit www.iow.nhs.uk/publichealth).

All of us in the health service remain committed to improving the quality and efficiency of health services on the Island.

Danny Fisher, Chairman NHS Isle of Wight



ACTIVITIES

Huge Hospice Quiz

(10 November)
Major fund raising quiz for the Earl Mountbatten Hospice at Newport, to be held at Lower Hyde, Shanklin, 6.45pm for 7pm start, tel: 528989 to register team of four, cost £20 per team.

Traditional Nativity

(24 December)
Played by the young people of the parish, Holy Trinity Church, Cowes, 5pm.

EXHIBITIONS

Rhythm, Form and Fire

(1-2 October)
An innovative exhibition of hand-carved ceramics, by artist Andrew Dowden, and hand-

sculpted glass by artist Paul Critchley, at the Echium Room, Ventnor Botanic Garden, 10am to 5pm, entry for the exhibition is free.

Bembridge Art Society autumn exhibition

(14-16 October)
An exhibition of paintings and demonstrations by members of the society, to be held at Bembridge Village Hall, 10am to 4.30pm.

Cowes Heritage annual exhibition

(22 October – 13 November)
Exhibition titled 'Turn back time – shops of Cowes, Gurnard and Northwood', to be held at the Regatta Office, Bath Road, Cowes, 10am to 4pm, free admission.



An historic look at the shops of the Cowes area, Cowes Heritage annual exhibition, the Regatta Office, Cowes, 22 October to 13 November (pictured: a flooded Cowes High Street, 1953)

FAIRS & SHOWS

Isle of Wight Bus Museum, Autumn Running Day

(16 October)
Local and mainland visiting buses and coaches displayed and operational from Newport Quay to various destinations,

10.30am to 4.30pm, shuttle bus from Newport bus station, programme/guide available, £5.

Craft Fair

(29 October)
Handcrafted items by local people, Town Lane hall, Newport, 10am to 3.30pm, entrance free.

MEETINGS

Isle of Wight branch of the British Cactus and Succulent Society

(monthly)
Meeting on the second Saturday each month, Church Close Community Centre, Wootton, 7pm to 10pm.

Vectis Branch of the Submariners' Association

(monthly)
Meeting on the fourth Wednesday each month, Camp Hill Prison Officers' Club, Newport, 7.30pm.

Isle of Wight Orchid Society

(monthly)
Meeting on the third Monday each month, Riverside Centre, Newport, 7.30pm.

Sandown Bay Diabetes Support Group

(monthly)
Meeting on the third Thursday each month, informative talks by medical professionals and discussions on matters relating to diabetes, Methodist Church Hall, York Road, Sandown, 7.30pm, contact Sharon Merrick, tel: 400336.

ADVERTISEMENT

Room for one more?

Have you considered becoming a foster carer, or maybe just want to know more about fostering and what's involved?

For more details contact the council's fostering and adoption service on 01983 566011 or visit www.iwight.com/fostering





Award-winning Texas bluesman Eugene 'Hideaway' Bridges will be performing at Freshwater Memorial Hall on 29 October at 7.30pm

MEETINGS

British Airways' Retired Staff Association

(monthly)
Meeting on the third Wednesday each month, coffee morning, the White Lion, Arreton, 11am.

Vox Pop rock and pop choir

(monthly)
Meeting each Wednesday, new singers welcome, no auditions or need to read music, songs from 50s to 90s, at parish rooms, Town Lane, Newport, 7.30pm to 9.30pm, visit www.voxpopchoir.co.uk

MUSIC

Sound Advice

(1 October)
Newchurch Male Voice Choir concert for the Royal Institute for Deaf People, Salvation Army Hall, Pyle Street, Newport, 7.30pm.

Wolverton Manor Concerts

(12 October)
Performance by the Camerata Choir in aid of Leukaemia Research, Wolverton Manor, Shorwell, 7.30pm, tickets £15, details from www.wolvertonmanor.com

Newchurch Male Voice Choir Concert

(13 October)
Charity concert for George Street Centre, at Baptist Church, George Street Centre, Ryde, 7.30pm.

Karim Said

(15 October)
West Wight Arts Association presents pianist Karim Said, performing work by Bach, Memorial Hall, Freshwater, 7.30pm, for tickets tel: 752956 or email: administrator@freshwatermemorialhall.org.uk

Eugene 'Hideaway' Bridges

(29 October)
Award-winning Texas

bluesman appearing at Freshwater Memorial Hall as part of his current UK tour, plus support from The Moonshiners, 7.30pm, tickets £13/£15, tel: 740843.

Caroline MacPhie and Joseph Middleton

(12 November)
West Wight Arts Association presents soprano MacPhie and pianist Middleton performing songs by Bridge, Purcell, Britten, Rodrigo, Strauss, Mozart, Puccini and Gounod, Memorial Hall, Freshwater, 7.30pm, for tickets tel: 752956 or email: administrator@freshwatermemorialhall.org.uk

Doric String Quartet

(10 December)
West Wight Arts Association presents a string quartet performing works by Haydn, Bartok and Schubert, Memorial Hall, Freshwater, 7.30pm, for tickets tel: 752956 or email: administrator@freshwatermemorialhall.org.uk

TALKS

Richard Trevithick – early locomotive inventor

(5 October)
A talk to the Isle of Wight branch of the Historical Association, by Dr Robin Smith, at the Parish Centre, Town Lane, Newport, 7.30pm, contact Terry Blunden, tel: 524410.

The history of Red Funnel steamers

(6 October)
An illustrated talk by the company's archivist, Hazel Nicholson, Birmingham Road Methodist Church, Cowes, 7pm, free admission, organised by Cowes Heritage.

I am a genius: artistic identity and the artists' changing status

(13 October)
A decorative and fine arts society lecture by Linda Smith, Medina Theatre, Newport, lecture 8pm, coffee and bar 7.15pm, visitors £6, students £2, pay on the door, contact Judith Hook, tel: 854322.

Resorting to the coast – development of the seaside as a holiday destination

(2 November)
A talk to the Isle of Wight branch of the Historical Association, by Dr Geoffrey Meade, at the Parish Centre, Town Lane, Newport, 7.30pm, contact Terry Blunden, tel: 524410.

Symbolist painting: The age of decadence 1880 to 1910

(17 November)
A decorative and fine arts society lecture by Julian Halsby, Medina Theatre, Newport, lecture 8pm, visitors £6, students £2, pay on the door, contact Judith Hook, tel: 854322.

We Three Kings: Music, art, legends and poetry inspired by the Magi

(2 December)
A decorative and fine arts society Christmas lecture by Peter Medhurst, Medina Theatre, Newport, lecture 8pm (wine and nibbles from 7.15pm), visitors £6, students £2, pay on the door, contact Judith Hook, tel: 854322.

Counting heads – 975 years of census on the Isle of Wight

(7 December)
A talk to the Isle of Wight branch of the Historical Association, by Graham and Rachel Fuller, Parish Centre, Town Lane, Newport, 7.30pm, contact Terry Blunden, tel: 524410.

These listings are provided free, as a public information service. Details must be submitted either by: **filling out this form, or emailing your details to oneisland@iow.gov.uk**

Please conform to the format shown. Entries are included at the editorial team's discretion. Next scheduled edition: 16 December (listings for period 16 December to 31 March).

Title of event/activity:

Date:

Brief description:

Venue:

Time:

Contact name:

Telephone:

Please return (**by 18 November**) to: **Time & Place, One Island, Resident Information and Consultation Unit, County Hall, Newport, Isle of Wight PO30 1UD or email to oneisland@iow.gov.uk**