

one Island

The community
magazine for
the Isle of Wight

Issue 30
November 2010

Protecting our heritage

Play your part in special
conservation review

Also inside:
Adult services consultation



WELCOME



Welcome to November's *One Island*

Welcome to the November issue of *One Island* magazine. In this edition we include important information on how you can contribute to the current consultations on adult social care changes on the Island, including the proposals for Westminster House at Newport.

We also feature key information from our police and NHS partners, including helpful guidance on NHS services if you are feeling unwell this winter – and a special cut-out-and-keep section about preparing for, and coping during major emergencies.

How to contact us

If you have community news to share with other readers, we would like to hear from you. We also welcome your letters. You can contact us by post, email or telephone.



Post One Island, Communications,
County Hall, Newport PO30 1UD



Email Onel Island@iow.gov.uk

Telephone 823105

Advertising in *One Island*

More than 43,000 copies of *One Island* are distributed throughout the Island for each edition.

The magazine is published as an insert in the Isle of Wight County Press – with additional copies available in libraries, post offices, help centres, doctors' surgeries and other key locations.

If you would like to advertise in the magazine, please contact us for more information and a copy of our rate card:

Tel: 823351

Email: oneisland@iow.gov.uk



You can also download a copy of the rate card from the council's iwight.com website.

USEFUL CONTACTS

Isle of Wight Council, County Hall, Newport PO30 1UD

Fax: 823333

Email:

customer.services@iow.gov.uk

Website: www.iwight.com

TELEPHONE SERVICES

Call centre: **821000**

Monday to Friday: 8am to 6pm

Saturday: 9am to 1pm

We recommend you contact the call centre initially, where we aim to answer as many enquiries as possible at this first point of contact.

Popular numbers

Automated telephone payments	559310
Building control	823580
Council tax	823901
Education	823455
Environmental health	823000
Housing benefits	823950
Leisure services	823828
Libraries	203880
Licensing	823000
Parking services	823714
Planning	823552
Refuse collection	823777
Registrars	823233
Roads and highways	823777
Tourism	813813
Trading standards	823396
Consumer Direct	08454 040506
Wightbus	823782
Dial-a-bus	522226

Community services

Adult services	823340
(Adult duty, emergency)	534227
Children's services	525790
Local centres: Cowes	291144
Newport	823340
Ryde	566011
Sandown	408448
Headquarters	520600
Housing	823040

EMERGENCY NUMBERS

In an emergency dial 999

Fire and rescue control centre (24hrs) **525121**

Out of hours:

Highways **525121**

Waste disposal **0800 3283851**

Wightcare **533772/821105**

(out of hours)

All other council services **821105**

FACE TO FACE SERVICES

Newport Help Centre

Tel: 821000

County Hall, Newport PO30 1UD

Mon to Thur: 8.30am to 5pm

Fri: 8.30am to 4.30pm.

Ryde Help Centre

Tel: 812678

Ryde Library, 101 George Street,

Ryde PO33 2JE. Mon to Wed, Fri.

Sandown Help Centre

Council offices, Broadway,

Sandown PO36 9EA.

West Wight Help Centre

Tel: 756140

Freshwater Library, 41 School

Green Road, Freshwater PO40

9AP. Tues only.

Please ring 821000 to confirm opening times.

PARTNER CONTACTS

NHS Isle of Wight

Tel: (01983) 524081

Police

Tel: 0845 45 45 45

Rural Community Council

Tel: (01983) 524058

COUNCIL MEETINGS

Unless otherwise stated, all meetings are in public at County Hall. Call 823200 24 hours before a meeting to ensure it is going ahead and to check if any items are likely to be held in private session.

Council (council chamber)

19 January (6pm)

Cabinet (committee room one)

7 December (6pm)

24 January (6pm)

Planning Committee

(council chamber)

21 December (4pm)

25 January (4pm)

Audit Committee

(committee room one)

30 November (6pm)

Licensing and General Purposes Committee (committee room one)

6 December (4pm)

10 January (4pm)

Ethical Standards Committee

(committee room one)

17 January (6pm)

Overview and Scrutiny Committee (committee room one)

16 December (5pm)

13 January (5pm)

Adult Social Care, Health and Housing Scrutiny Panel

(committee room one)

9 December (5pm)

1 February (6.30pm)

Children and Young People Scrutiny Panel

(committee room one)

8 December (5pm)

1 February (4pm)

Economy, Environment and Transport Scrutiny Panel

(committee room one)

15 December (5pm)

2 February (4pm)

Fire and Community Safety Scrutiny Panel

(committee room one)

1 December (5pm)

2 February (6.30pm)

CONTENTS



page 4



page 10



page 6



page 17

This magazine is available on request as an audiotape, in large print, in Braille, in other languages and online at www.iwight.com. For further details, please contact One Island on 823105.

ONE ISLAND is published by the Isle of Wight Council. The council does not accept responsibility for goods or services offered by advertisers. Additional copies are available from the Customer Service Centre at County Hall, libraries and other council facilities. Typetalk calls welcome. Written, designed and produced by the Communications Department, Isle of Wight Council.

ISSN 1752-8038

© COPYRIGHT 2010

Isle of Wight Council,
County Hall, Newport,
Isle of Wight PO30 1UD.

Printed on paper from
sustainable sources by
Belmont Press.



FIRST WORD

Council and community news

- 4 Protecting our heritage
- 5 Ready to tackle the winter's worst
- 6 Christmas refuse collection details
- 7 Get set for 2011 census
- 8 Extra security for boat owners

FEATURE

- 10 **Adult services consultation**
Have your say on proposed changes

SUPPLEMENTS

- 14 **Hampshire and Isle of Wight Police**
Action against crime and anti-social behaviour
- 16 **The Island's NHS**
Choose well this winter
- 19 **Be prepared!**
Cut-out-and-keep guide to preparing for major emergencies
(also see story on page 5)
- 17 **COAST AND COUNTRY**
Rural and coastal news
- 18 **TIME & PLACE**
Events and activities

Cover picture: Bembridge Harbour, part of a conservation area which is soon to be reviewed (see page 4)

One Island is a community magazine produced by the Isle of Wight Council with its key public sector partners – NHS Isle of Wight, Isle of Wight Police (Hampshire Constabulary) and the Isle of Wight Rural Community Council. Working together through the Island Strategic Partnership, we are striving to create an Island that is *safe and well kept; healthy and supportive; inspiring; and thriving.*



NHS
Isle of Wight





Pictured: Church of St John the Baptist, Ryde

Tell us your views about *conservation areas*



Above: Aerial photo of the Ryde St John's conservation area

Five areas of the Island are to undergo new conservation area reviews.

They are Ryde, Ryde St John's, Sandown, Shanklin and Bembridge.

People will be able to give their views in writing or via the council's website early

in the new year, by visiting www.iwight.com/conservation

Draft documents will be available electronically and at relevant local libraries and the council's Seaclose offices at Newport.

Conservation area reviews involve architectural, ecological

and archaeological assessments, and take into account the experience of walking or driving through an area.

The council has a legal responsibility to designate (for conservation) any areas considered to be of special architectural or historic interest.

The reviews of the five areas are due to be completed by the end of March next year, with five more areas due to be looked at the following year.

Local councillors and town and parish councils have already been consulted.

Conservation areas are monitored by English Heritage, and planning applications in such areas require special emphasis on quality and suitability of design. In a conservation area, homeowners may need to apply to the council for permission for certain works to trees, for demolition, cladding and the erection of satellite dishes and outbuildings.

• More information can be found at www.iwight.com/living_here/conservation_and_design or by calling 823552.



Pictured: Artist's impression of the new square

New town square takes shape in Ryde

Work will begin in the new year on a new pedestrianised town square in Ryde.

The square is being built at the junction of the High Street and John Street and will upgrade the area with features including benches and trees.

Once started, the work is expected to take from six to eight weeks to complete.

The designs for the square were drawn up in consultation with Ryde Business Association and Ryde Town Council.

The project has been funded by money from Tesco, as part of its obligations connected to the development of its new superstore on the outskirts of Ryde, built two years ago.

How our parking fees are spent



Income from parking services last year generated nearly £2.34 million for highway improvement, traffic management and public transport schemes for the Island.

As required by law, the council has just published its annual report to explain its approach to parking and to give facts such as the number of parking tickets issued and the amount of money collected through parking charges and fines last year.

The report – available on iwight.com or on application to the council's parking services – also highlights improvements made to ensure council car parks are safe and clean and to create safer parking schemes for schools.

Knowing what to do when emergencies hit



Island and Hampshire residents are being provided with helpful guidance on how to prepare in the event of major emergencies and disasters.

The routine guidance is being given by local councils, health and emergency services in both counties through various publications and websites.

It is part of a joint initiative to keep the public regularly informed on how to prepare for various emergency scenarios.

You can find the cut-out-and-keep guidance on the back two pages of this edition of *One Island*. It provides useful tips on preparing emergency packs and what to do before, during and after an emergency.

The council's resilience manager, Ian Collins, said: "We all remember the heavy snowfalls of earlier this year, and how helpful it can be to be well prepared for such situations.

"With our emergency service and other partners, we hope this up-to-date guidance will be useful for people in the event of severe weather and a whole range of other situations."

More advice on how to prepare for and act in emergency situations can be found at the www.direct.gov.uk website; for local information visit iwight.com.

Online maps provide easy-to-find service



The online mapping section on the council's website at www.iwight.com is proving to be a popular facility for Island residents and visitors.

Tourists are now able to use the site's maps to find the nearest GP surgery, dental surgery and chemist to where they are staying.

There is also a map detailing Island taxi companies and another showing the location of the council's long stay and short stay car parks.

With the help of Google Maps, it is also possible to view the location of help centres, libraries, recycling centres, ferry terminals and beaches affected by dog control orders.

For each of the maps, visitors to iwight.com are able to zoom into the exact location and click on the respective icons for more details.

Gritting fleet ready to combat the winter's worst

A fleet of gritting trucks is on round-the-clock standby to ensure the Island's main roads are kept safe during the winter months.

The vehicles are run as part of a contract between the council and Ringway Group Ltd.

The new fleet was introduced last year and has a range of features to help efficiently spread salt to

combat ice and snow.

The council regularly receives detailed weather forecasts and data on road surface temperatures to ensure the

fleet is ready to move into action. A full list of gritting routes can be found at www.iwight.com/gritting



More Island children being vaccinated

The NHS on the Island is reminding parents of the importance of routine childhood vaccinations against infectious diseases, such as measles, mumps and rubella (known as MMR), whooping cough and polio.

Although the levels of Island children being vaccinated are increasing, the aim is to ensure that no children miss out.

Ideally, children should have



their vaccinations at the right age to protect them as early as possible.

Vaccinations are quick, safe and extremely effective. Once a child has been vaccinated against a disease, their body can fight it more effectively if they come into contact with it.

If a child isn't vaccinated, they and others will be at increased risk of catching the illness.

You can find out more about

childhood vaccinations and when they should be given by visiting www.nhs.uk

If you are not sure if your child is fully protected, contact your health visitor, practice nurse or doctor, who will be able to advise you.

Making sure that children have all their routine childhood vaccinations is one of the most important things a parent can do.

NHS
Isle of Wight

Christmas and New Year refuse collection and recycling

Refuse and recycling collections on the Island will be changed for a period of four weeks over Christmas/New Year and into January.

Refuse and recycling must be placed kerbside by 7am.

Refuse normally collected on	Will be collected on
Mon 27 Dec	Wed 29 Dec
Tues 28 Dec	Thur 30 Dec
Wed 29 Dec	Fri 31 Dec
Thur 30 Dec	Tues 4 Jan
Fri 31 Dec	Wed 5 Jan
Mon 3 Jan	Thur 6 Jan
Tues 4 Jan	Fri 7 Jan
Wed 5 Jan	Sat 8 Jan
Thur 6 Jan	Mon 10 Jan
Fri 7 Jan	Tues 11 Jan
Mon 10 Jan	Wed 12 Jan
Tues 11 Jan	Thur 13 Jan
Wed 12 Jan	Fri 14 Jan
Thur 13 Jan	Sat 15 Jan
Fri 14 Jan	Mon 17 Jan
Mon 17 Jan	Tues 18 Jan
Tues 18 Jan	Wed 19 Jan
Wed 19 Jan	Thur 20 Jan
Thur 20 Jan	Fri 21 Jan
Fri 21 Jan	Sat 22 Jan

Kerbside recycling service

Week A collections are shown in **bold** (see table above).

Please do not worry if your day of collection has moved into the next week. Just place your box kerbside by 7am on your revised collection day.

Christmas tree recycling

- Brightstone village car park.
- Ventnor Botanic Garden car park.
- East Cowes Esplanade car park.

- Lake – New Road car park.
- Ryde – Waltzing Waters car park.
- Somerton park and ride car park.

Christmas trees can also be placed with garden waste at all household waste recycling centres (see below for times).

Christmas card recycling

Contact your local primary school to find out if they are participating in this year's Christmas card recycling initiative.

Household waste recycling centres

Lynnbottom:

- Open 7am to 7pm, seven days a week.
- Closed Christmas Day.

Afton:

- Open 9.30am to 4.30pm, Monday 27 Dec, Tuesday 28 Dec, Sunday 2 Jan, Monday 3 Jan (thereafter Saturdays and Sundays as usual).
- Closed Christmas Day, Boxing Day, New Year's Day.

Forest Road:

- Open 9.30am to 4.30pm, Monday 27 Dec, Tuesday 28 Dec, Sunday 2 Jan, Monday 3 Jan.
- 7am to 7pm, Sundays 9, 16 and 23 Jan.
- Closed Christmas Day, Boxing Day, New Year's Day, Saturdays 8, 15 and 22 Jan.

Contact details

- Isle of Wight Council tel: 823777, website: www.iwight.com
- Island Waste Services tel: 821234, website: www.islandwaste.co.uk

Country Watch protection for rural communities



Pictured: Isle of Wight Country Watch officers (left to right), PC Tim Campany, PCSO Justin Keefe, Sergeant Mark Lyth.

Police have started a campaign to create stronger links with rural communities on the Island.

The Country Watch project combines previous campaigns such as Horse Watch and Farm Watch, together with issues of hunt liaison, equine liaison and wildlife crime.

Currently eight police officers and staff have specialist Country Watch roles on the Island. The project is seen as the rural equivalent of Neighbourhood Watch.

Co-ordinator, Sergeant Mark Lyth, said: "The project's purpose is to encompass all rural and remote communities, to encourage a greater exchange of information that can stop and solve crimes swiftly and effectively. Country Watch officers visit land owners, farmers, rural businesses and neighbourhoods to invite them to become official members of the scheme."

For more information on the scheme, you can visit the police Country Watch website at www.hampshire.police.uk

Reclaim the Night march



People are being invited to march through the streets of Newport on Thursday 25 November, to raise awareness of domestic abuse.

The Isle of Wight's first Reclaim the Night march is being organised by the Island's Domestic Abuse Forum and is intended to highlight the services and support for victims.

On the Island, it is estimated more than 2,000 women and girls have been victims of domestic abuse in the past year – with many cases going unreported. Domestic abuse is not limited to women, men are often victims too.

Reclaim the Night marches started in the UK in the 1970s as a way of giving women a voice and a chance to reclaim the streets at night during a safe and empowering event.

Anyone wanting to take part in the march should meet at St Thomas' Square at 7pm. The Reclaim the Night March will be followed by a rally with speakers and a candlelit vigil in Newport Minster.

For more information about the march you should contact co-ordinator Fleur Gardiner on 821000. Details about support services can be found at www.saferwight.org.uk

ADVERTISEMENT



Festive fun.
Fabulous shopping.
Fantastic fares.

Southampton is the perfect destination for a Christmas shopping trip. From the likes of Apple, GAP and John Lewis in WestQuay, to the specialist shops in East Street or something Swedish from IKEA. New for 2010 is the Southampton Festival of Christmas (from 18 Nov), with free entertainment, a new Christmas market and much more. And, with our fantastic winter deals, you'll pick up a bargain before you even get there.

Day Return
from just
£34*
Car + up to
7 people

Foot
passenger
fares from only
£7.50**

Visit www.redfunnel.co.uk
Call **0844 844 9988**

* See website for full details and conditions.

** When two people purchase tickets and travel together from 11.15am on the Vehicle Ferry and Red Jet service. Valid seven days a week. Red Funnel reserves the right to amend or withdraw fares and cancel or amend sailings without notice. All sailings are subject to availability. Standard Terms & Conditions of Carriage apply.



RED FUNNEL
THE ORIGINAL ISLE OF WIGHT FERRIES

Get set for 2011 national census



The Office for National Statistics will be carrying out a census across England and Wales on Sunday 27 March 2011.

A census takes place every ten years and allows the gathering of information to estimate the number of people and households in each area.

Findings from the census will contribute to local council funding allocations.

The information from the census also allows the

Office for National Statistics to analyse if different population groups are improving or are disadvantaged.

For the 2011 census, you will be able to complete your answers online, return your questionnaire by post, or in some cases, have your questionnaire collected.

For more information on the census you can visit www.census.co.uk

Flood risk areas

In the September issue of *One Island* we carried an article in which the Environment Agency encouraged Island residents to check if their home or business is in a flood risk area.

A photograph supplied by the Environment Agency to go with the article showed a flooded area of Newport Harbour. We have been asked to explain that although the photograph helped illustrate the article, it did not mean any particular properties shown were at risk.

ADVERTISEMENT (cut-out-and-keep)

Development plans at Westridge Tone Zone gym and squash

Westridge Squash and Tone Zone gym will be closing early in the New Year for an extensive upgrading project.

When the doors re-open, as well as improved public areas, customers will benefit from:

- refurbished squash courts to include new floors and repainted walls;
- upgraded changing rooms which will include new showers, cubicles and lockers;
- a disabled changing facility, making the facilities more accessible for all.

During the closure, new technology will be installed to make Westridge more environmentally-friendly, in

line with the council's Eco Island initiative.

For more details, please contact the council's leisure services department on 823828 or email leisure@iow.gov.uk

Options for One Card customers:

- Continue your membership and use the fitness facilities at The Heights or Medina leisure centres.
- Freeze your membership until Westridge re-opens.

All Westridge One Card customers who continue their membership will be offered a month's free membership when Westridge re-opens.





Christmas panto to support Ryde Lions

Pictured: Cast members on the Ryde Lions float that toured carnivals this year. **Ryde Lions is the nominated charity to benefit from this year's Christmas pantomime at Medina Theatre, Newport.**

That's Entertainment Productions is presenting *Dick Whittington and the Pirates of Blackgang Chine* at the theatre from 21 to 30 December (excluding Christmas Day).

Each year the production company gives a percentage of its profits to local charities and this year has nominated Ryde Lions.

Ryde Lions is celebrating its 40th anniversary this year, and since forming in 1970, has raised more than £160,000 for charity – including donations to international disaster appeals and many local groups and individuals.

This year's Medina pantomime stars Howie Watkins from BBC's *Really Wild Show* and the Island's Samara Stanton as the leading lady. The traditional family show will feature live music and some enthralling illusions.

Tickets can be booked online at medinatheatre.co.uk or direct from the theatre on 527020.

ADVERTISEMENT (cut-out-and-keep)

Development plans at Westridge Tone Zone gym and squash

If you still want to play squash or visit the gym while Westridge is closed – why not visit one of the council's other leisure facilities?

Medina Leisure Centre

Fairlee Road, Newport
PO30 2DX

Tel: (01983) 523767

Email:

medina.leisure@iow.gov.uk

The Heights

Broadway, Sandown
PO36 9ET

Tel: (01983) 405594

Email:

heights.leisure@iow.gov.uk



Waterside Pool

Esplanade, Ryde PO33 1JA

Tel: (01983) 563656

Email:

waterside.pool@iow.gov.uk

Why not try something new?

- Aerobics classes
- Swimming
- Badminton

To keep up-to-date with progress and see some of the plans, visit iwight.com/leisure



Help raise funds for our isolated senior citizens

Age Concern Isle of Wight is encouraging Island residents to get behind a Christmas appeal focusing on the lives of older people, who may be lonely and isolated.

It is estimated that across the country more than half a million older people spend Christmas Day alone.

The Island has more than 5,000 people aged over 85, and a higher level of single pensioner households (18.4 per cent) than the England and Wales average (14.4 per cent).

Local organisations are being asked to get involved in the appeal by replacing their usual approach of giving cards to work colleagues, friends and class mates. Instead they are being asked to put up an A2 sized poster of an empty Christmas tree from Age Concern, and for a £2 donation place a sticker bauble, with festive message, on the tree.

To get involved with the appeal, and obtain posters and stickers, contact Age Concern Isle of Wight on 525282 or email: info@aciw.org.uk

Boat owners invest in extra security

Police at Yarmouth have been educating Island seafarers about protecting their vessels from criminals.

The Island's mobile police office visited Yarmouth harbour to give information on the value of property marking on equipment on yachts and other boats.

The visit resulted in 21 SmartWater kits being purchased by boat owners.

Boat owner Terence Kelsey said: "I'm aware some thieves steal to order because of the valuable equipment stored on board. Crime prevention ideas like this provide valuable extra security."



Pictured: PCSO Mike Thornton and boat owner Terence Kelsey applying SmartWater during the police event at Yarmouth Harbour

Christmas and New Year opening times for council services

For details of opening times of council services over the Christmas/New Year period, please visit the iwight.com website from mid-December, and look out for information in the local media.

waitrose.com/eastcowes



Come and tempt your
taste buds.

Waitrose in East Cowes is now open.

Waitrose

Everyone deserves quality food

One Island 9

Have your say

Two major consultations on adult social care services on the Island are now underway. Here we take a look at the proposals behind the consultations and how you can have your say...



In mid-October the council began two key consultations on plans to change the way it delivers and charges for adult social care services on the Island.

The 90-day consultations are looking at:

- the **charging policy** and **eligibility thresholds** for adult social care services;
- proposals for the relocation of **Westminster House** respite care service (for adults with learning disabilities) at Newport, to The Gouldings at Freshwater and The Adelaide at Ryde.

Here we outline the changes and explain how you can tell us your views.

Why are changes being proposed?

The Isle of Wight Council, along with other councils up and down the country, is facing major challenges to its finances – and over the next four years needs to find savings of at least £32 million.

The council is spending more than it can afford on adult social care services, including adults with learning disabilities.

All this is happening as the Island's elderly population and

the numbers of adults with learning disabilities are increasing, and as people are living to a greater age.

As a result, the demand for care services on the Island is increasing day by day, and the council is finding it increasingly difficult to provide services for those most in need in the community.

It means the council has no option but to look at different ways of providing its services more cost-effectively, while making sure the most vulnerable people in our community are looked after appropriately.



Charging policy and eligibility thresholds

These proposals are designed to fully support those with the highest 'critical' level of need, and put preventative support in place for those with 'substantial' needs, to ensure they can remain well and safe in their own home.

The aim is to charge people fairly, and for those charges to reflect the true cost of providing the service.

The council has stressed that no one will be billed for services they cannot afford, and the new charges will only be payable by individuals when both their needs and ability to pay have been assessed against national criteria.

Those whose needs are currently deemed as substantial will be assessed to determine which parts of their packages are most needed in order to stop their needs moving to critical. These elements will continue to be provided by the council.

During the assessment process, people will be given advice and information to ensure they are claiming all of the benefits to which they are entitled.

What will not change is any services provided to those in residential care, the mechanism by which people's means are assessed or services to those currently assessed as having critical needs.

on adult social care changes



Westminster House

This proposal involves the relocation of the current respite care service at Westminster House, Newport, to The Gouldings in Freshwater and The Adelaide in Ryde.

It is intended that this will result in better facilities for people using the services and at a reduced cost.

Under this proposal, the staff involved in delivering the service at Westminster House would transfer to The Gouldings or The Adelaide to ensure that those using the service would be supported by familiar faces.

The change would also mean users could have access to a bedroom with en suite sink and toilet, rather than shared facilities, which is currently the case with most bedrooms at Westminster House.

The changes are designed to help support people with learning disabilities who want to learn to live more independently.

What is the timetable?

The consultations began on **15 October** and will end on **14 January**.

The process is designed to be thorough – canvassing the views of those who use these services as well as their families and carers, private and voluntary sector providers of services, staff working in their area and the wider community.

No final decisions have been taken on the proposals and will not be until the

consultations have been completed, evaluated and discussed by the council's cabinet and full council.

The council's cabinet meets on **8 February** to make a recommendation to the full council on the proposals.

The final decision will be made by the full council on **23 February**.

How do I find out more about the proposals?

For full details of the proposed changes for charging and eligibility thresholds and for Westminster House, please visit the consultations page at the council's website at www.iwight.com/haveyoursay

You can also pick up a copy of the consultation documents (including easy-to-read versions) from help centres and libraries.

How do I make my views known?

Charging and threshold changes

To tell us your views on the proposed charging and threshold changes:

- Email: social.care@iow.gov.uk
- Write to: Social Care Consultation, County Hall, Newport, Isle of Wight PO30 1UD.

Pictured: Westminster House



Westminster House

The council has sent an easy-to-read questionnaire to everyone that uses Westminster House (and also Beaulieu House) or who might do in the future, and is setting up meetings for people to talk about the proposals.

You can also complete an easy-to-read questionnaire online at www.iwight.com/haveyoursay

A printed questionnaire can be obtained from help centres and libraries.

If you **do not use** Westminster House, but would like to register your views:

- Email: westminsterhouse.consultation@iow.gov.uk
- Write to: Westminster House consultation, County Hall, Newport, Isle of Wight PO30 1UD.
- Attend a meeting to tell us (dates to be published).

Please tell us your views before 14 January.



Could
you get

free

home
insulation

and save money on
your energy bills?

You could be spending more than you need to on heating your home. **Studies suggest that a home with no insulation could lose around 26% of heat through its roof and 33% through its walls¹.**

The Island Insulation Scheme is working with some of the top names in home insulation, E.ON and Mark Group, to help you save money and energy by installing simple energy efficiency measures. You could save as much as £340 per year!¹

¹ Source - Energy Saving Trust

² Please visit www.homeheatseekers.co.uk/iwight/prices for full terms and conditions

¹ The £340 saving over a one year period is made up from increasing your loft insulation from 50mm (about 2 inches) to between 250mm and 270mm (about 10 to 11 inches) and installing cavity wall insulation. The cost saving is approximate, is provided for illustrative purposes only and is based on a 1940's gas heated semi-detached house with three bedrooms. Savings assume a gas price of 3.158p/kWh using a ten year old gas boiler. Your individual saving will vary according to the type and age of your house, the type and age of your boiler, the fuels you use in your home and whether or not you choose to take increased warmth following the installation of the insulation measures.

² Insulation is free if you, or someone living with you, is aged 70 or over, or in receipt of a qualifying benefit. Additional charges may apply if a property is larger than the average size for the property type, or if vents or scaffolding are required. Based on a typical three bedroom semi-detached house with no more than 100mm of existing loft insulation. Prior to undertaking any work the homeowner/landlord will receive a written quotation setting out the scope of the insulation work including any additional charges and work will only be carried out when written acceptance has been received by the installer. Other Terms and Conditions apply and will be set out in the contract with the appointed installer. Offer is subject to availability and may be withdrawn at anytime.

³ Houses built before this date could still have a cavity, call us if you would like to find out if this is true for your home.



Why insulate?

Installing cavity wall and loft insulation is not only good for the environment, it's also good for your pocket – you could save up to £340 a year on your energy bills.

There's never been a better time to take advantage of this offer – you could insulate your home for **FREE or from as little as £99² for cavity wall insulation and £99² for loft insulation.**

“My family is really noticing the benefits since we had the wall cavities at our home insulated this year. It has made a real difference and I've already recommended the scheme to my father in law.”

**Mrs Tracie Beecher,
Rookley**

To find out more or to make an appointment with one of our advisers, please call **0800 111 4968** (Monday to Friday, 8.30am to 6pm) or visit **www.homeheatseekers.co.uk/iwight**



In partnership with:



You said, We did...

The Isle of Wight Community Safety Partnership taking action on your concerns about crime and anti-social behaviour

Oakfield An increase in reports of anti-social behaviour in the Meaders Road and Oakvale areas of Oakfield prompted extra police patrols during the summer. Four men were caught by police and charged to appear in court for public disorder and criminal damage. Sergeant Andy Gill of the Ryde Safer Neighbourhoods team said: *"The mindless actions of a few individuals will not be allowed to disrupt the quality of life for residents in an area that saw a reduction in crime last year. We continue to work with the community, local council and housing associations to find the best long-term solution."*



Above: Oakfield resident Jayne Clews with Sergeant Andy Gill.

Ryde Preventing crime when large groups of people gather is one of the top policing priorities for residents and visitors in Ryde. A global cavalcade of scooter enthusiasts was kept safe and steady by the local Safer Neighbourhoods team and Roads Policing Unit, which escorted thousands of riders on their annual ride out from Ryde to Sandown during the August Bank Holiday weekend. PC Nick Massey started the procession in front of thousands of spectators during a photo shoot for the Isle of Wight Gazette newspaper. Letters of thanks were received about how the event was policed. One member of the public said: *"The officers on duty dealt with incidents in a calm and professional way. At any point during our weekend the police were on hand to keep us safe and always had a cheery word for us. The attitude shown to us was superb and is to be commended."*



Above: PC Nick Massey at the scooter rally in Ryde (Photo courtesy of the IW Gazette).

Cowes Tackling anti-social behaviour is the top policing priority for residents in Cowes. An unexpected upsurge in criminal damage was tackled by the local Safer Neighbourhoods team in West and East Cowes. Analysis suggested most of the damage was taking place near underage drinking hotspots. Officers and PCSOs changed their patrols to target persistent offenders found in possession of alcohol. Simultaneous test purchases were also carried out. One off-licence was caught selling cider to underage customers. Three youths were also arrested for alcohol related offences. They were given warnings and issued with Acceptable Behaviour Contracts (ABCs).



Above: PCSO Steve Anker on patrol in East Cowes.

Yarmouth The West Wight Safer Neighbourhoods team (SNT) acted on concerns about thefts from boats on their beats. Sailors showed their support for smarter solutions to prevent crime affecting the marine community. The island's mobile police office was at Yarmouth Harbour during the summer. Police gave advice on how the property marking system SmartWater can deter and detect thefts from boats. The Isle of Wight Community Safety Partnership introduced SmartWater here in 2008. The Marine Unit raised awareness of Project Kraken: Hampshire Constabulary's award-winning campaign to prevent crime and terrorism by encouraging information from people using the sea and rivers. An extra 17 sailors registered their details for the scheme, which is the marine equivalent of Neighbourhood Watch:

<http://www.hampshire.police.uk/Internet/advice/kraken/>

Cowes armed robbers to pay for their crime

Two men convicted of robbery were made the subject of compensation orders totalling almost £4,000 in October 2010. Gary Ridgewell-Smith and Oliver Mazirel were each sentenced to nine years in prison in May 2010 after an Isle of Wight CID and Sussex Police investigation led to their arrests. On July 3, 2009, the two masked men were caught on IW Council CCTV smashing the front window of Benzie jewellers and stealing watches, totalling £200,000 in value, while threatening a shop keeper with an imitation hand gun. At Portsmouth Crown Court on October 14, 2010, a judge ordered compensation payments from both men. Financial investigators provided evidence to show Mazirel had financially benefited from his actions, to the total of £221,118.50, and had £1,940.60 available. He was given compensation orders of £100 to pay to Ryde Library after committing a theft there in 2008, and £1,840.60 to Lloyds of London, which is handling the Benzie case. Ridgewell-Smith was shown to have benefited from his criminal actions to the total of £212,955.00, with an available amount of £2,000. A compensation order of £2,000 was made to Lloyds of London. Detective Inspector Dave Brown, who leads Hampshire Constabulary's Economic Crime Investigation Unit, said: *"These orders were secured using the Proceeds of Crime Act. In the past the money criminals had gained from their actions was difficult to trace and prove, but now we can ensure that, like in the case of Mazirel and Ridgewell-Smith, they are sentenced for their crimes and also have to literally pay for their actions. We are making every effort to take the benefit out of crime."*

To report anti-social behaviour, please phone 101. In an emergency, always dial 999. The Isle of Wight Community Safety Partnership has made a pledge on tackling anti-social behaviour. For more information, go to <http://www.saferwight.org.uk/antisocialbehaviour.aspx>



Above: PCSO Mike Thornton speaks with Mark Stevens about marine security.

JUSTICE SEEN JUSTICE DONE



Above: The Benzie robbery caught on IW Council CCTV.



Above: Benzie robbery photographed by a tourist.



Feeling unwell?

Remember to *choose well* this winter

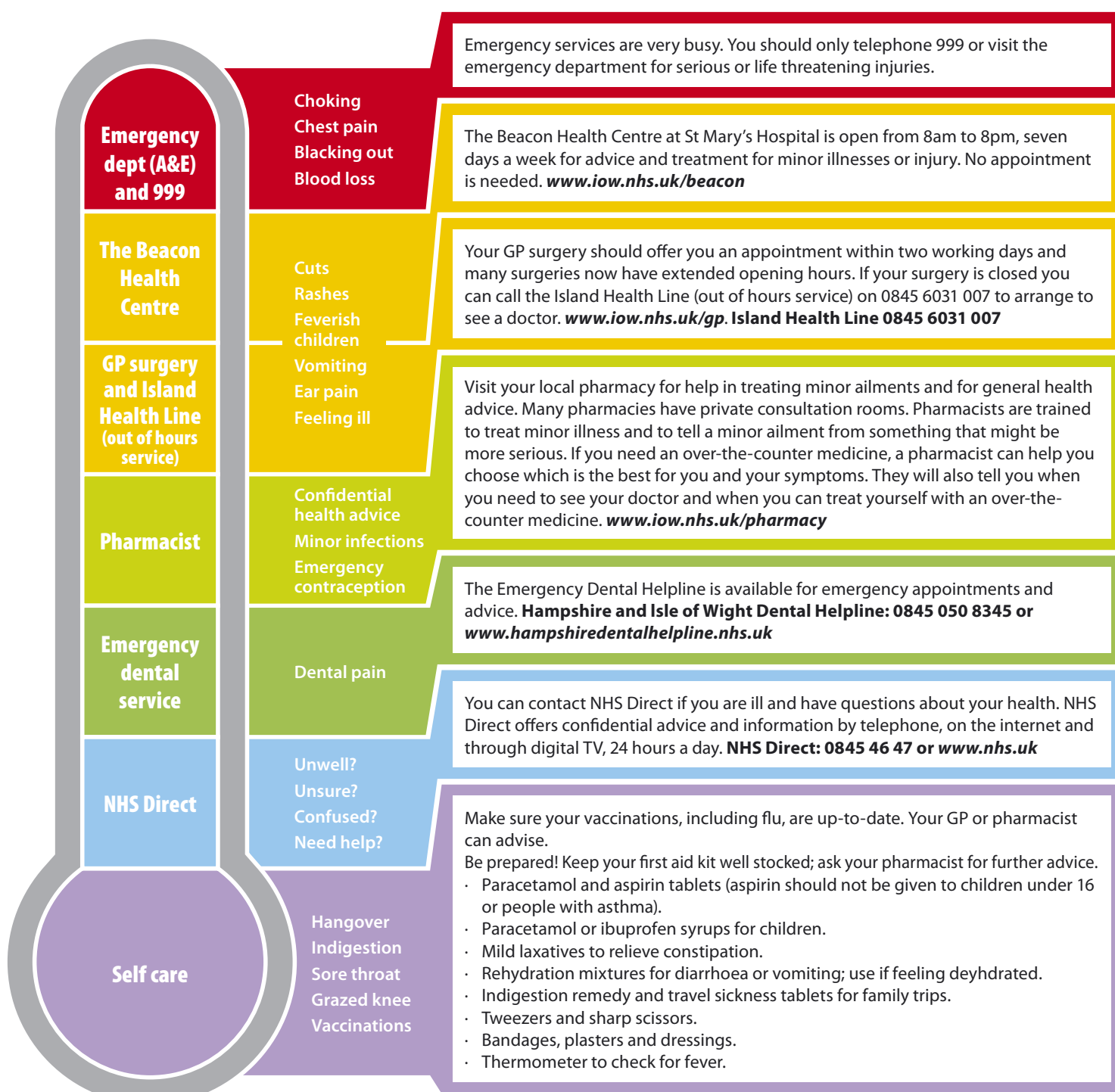


www.iow.nhs.uk/choosewell

Everyone wants to stay well if they can. With colds, coughs and infections doing the rounds and cold weather snaps this winter it's important that everyone on the Island knows how to get the right help, from the right place, at the right time from the NHS. Use the thermometer below to help choose the service most appropriate to your needs. Remember

your pharmacist can offer expert advice, NHS Direct is only a telephone call away and health advice can be found at www.nhs.uk – an early enquiry can help prevent a crisis later. Choosing the right service helps to reduce the pressure on emergency services and ensure that they are available for those who really need them.

Unless it is an emergency, anyone with symptoms of vomiting or diarrhoea should not visit NHS buildings, until 48 hours after the symptoms have cleared. Good hand hygiene at all times helps reduce the risk of spreading infection. Cough and sneeze into a tissue and then bin it!



Pictured: Field cow wheat



Super summer for Island species

The summer of 2010 was very rewarding in terms of wildlife treasures found on the sites managed by the council's countryside team. There were some species seen for the first time and others rediscovered, having been thought lost.

The countryside team are kept busy all year with the careful management of the habitats and wildlife at the 11 sites, which include five of the Island's six local nature reserves.

It was a good year for certain butterflies, with the Adonis blue recorded in good numbers at Rew Down, Ventnor and Brading Down. These vibrant blue butterflies were once on the endangered species list, but are now making a good recovery thanks to sensitive management of the chalk downland habitat on which they depend.

Both grizzled and dingy skipper butterfly populations were observed at Golden Hill Country Park, Freshwater. These small butterflies are of national importance because of their dramatic and continuing decline. Information about them gathered at the sites means management regimes can be adapted to accommodate their needs.

At a mini BioBlitz held during the Fort Victoria Foray at Yarmouth in August, an incredible 359 species were found during the day. It is believed a new species of sawfly for the Island was also discovered during the event, although formal confirmation is awaited.

The most surprising success story from one the nature reserves during the year was the discovery of the very rare and colourful field cow wheat.

Until recently it was only known to be growing in the wild at just four sites in the southern UK. It tends to grow on chalky soils in grasslands, and is usually associated with places that have recently been disturbed. This plant was once a considered to be a pernicious arable weed known as 'poverty weed' as the seeds reputedly gave a bad taste to flour and devalued the price of corn.

It is planned to manage the site of this plant so it can become a permanent feature of the local nature reserve.



Above: Dingy skipper butterfly **Below:** Adonis blue butterfly



Wonderful wintry walks...



The new edition of Wight Winter Walks is now available, free from libraries, tourist information centres and help centres, or as a pdf download from www.iwight.com/walks

The packed programme of coast and countryside events runs from 1 October to 31 March and features a wealth of guided walks and activities.

Don't forget to pick up your copy and get out and about to enjoy the best of the Island's wildlife and landscapes.

NATURE NOTES

By the middle of November, spring and summer may be distant memories but we have had both enough warm sunshine and rain to produce a good crop in the hedgerows, starting in August with blackberries and elderberries, and following on with hazelnuts, rose hips and other fruits.

If you find chewed hazelnut shells, look closely to find clues to what has been feeding. Woodpeckers wedge them into crevices in tree bark before breaking them into pieces. Red squirrels use their sharp front teeth to make a notch in the top and then split the shells vertically in half. Bank voles make round holes and wood mice gnaw round or ragged holes; both species leave tooth marks across the edge. Dormice nibble very neatly to make a smooth rounded opening in the side.



Pictured: Dark maroon hips of the uncommon burnet rose

There is a huge variety of rose hips, different in size, in form – round, oval, or flask-shaped, and in colour – ranging through orange, scarlet and crimson to dark maroon depending on the species. The dog rose occurs most commonly, but there are more than 15 other types of wild rose which are found here. Rose hips can be used to make syrups, jellies and jams, and over the winter they are important food for wild birds, both our resident flocks and others, like redwings and fieldfares, that arrive from Scandinavia. They are also packed with seeds surrounded by tiny hairs that irritate the skin. These account for the name of 'itchy-backs' when children used crushed rose hips to torment their friends!

Anne Marston, assistant ecology officer

ACTIVITIES

Open Day (20 November)

Find out about courses for school-leavers starting in September, and part-time courses for adults starting in January, Isle of Wight College, Newport, 10am to 2pm.

Open Evening (18 January)

Find out about courses for school-leavers starting in September, and part-time courses for adults, Isle of Wight College, Newport, 4pm to 8pm.

EXHIBITIONS

Open Studio Weekends (4-5, 11-12 December)

What Knot Crafts Studio, articles made from driftwood and rope, to see and for sale, sales help towards the Marine Conservation Society, at 2 The Cedars, Madeira Lane, Freshwater (turn off

Colwell Road near baptist church).

The Art of Storyboarding (15-29 January)

Exhibition of the work of Jamie Williams, Balmoral Gallery, Ventnor Winter Gardens.

Paintings by Derek Barran (4-25 February)

Exhibition of oil paintings, Balmoral Gallery, Ventnor Winter Gardens.

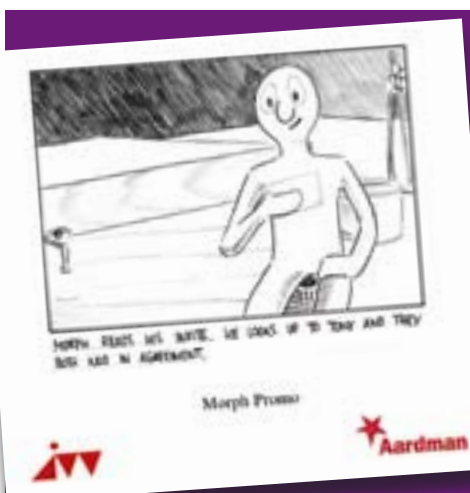
FAIRS & SHOWS

Christmas Bazaar, Holy Trinity, Ryde (20 November)

Stalls, entertainments, morning coffee, lunches, Garfield Road church hall, Ryde, 10am.

Isle of Wight Society for the Blind Christmas Fair (20 November)

Gifts, crafts, toys and games, mulled wine, tea, coffee, Millbrooke



The work of storyboard artist Jamie Williams will be on display at the Balmoral Gallery, Ventnor Winter Gardens from the 15 to the 29 January

House, Carisbrooke Road, Newport, 10.30am to 2pm.

Christmas Draw and Entertainments (27 November)

Christmas draw, afternoon tea and entertainment, draw at 4pm, Holy Trinity

Church, Dover Street, Ryde, 2.30pm.

Isle of Wight Craft Guild, Craft Fair (20 November, 11 December)

Hand-crafted items made locally, East Cowes Town Hall, 10am to 4pm, entrance free.

Lions' Club Christmas Fair (4 December)

At Ventnor Winter Gardens, 10am.

Chillerton Community Association, Christmas Fair (4 December)

Christmas stalls, refreshments, children-only gift shop, Chillerton Village Hall, 1pm to 3pm.

MEETINGS

British Airways Retired Staff Association (monthly)

Monthly coffee morning on the third Wednesday each month, at the White Lion, Arreton, 11am.

Isle of Wight branch of the British Cactus and Succulent Society (monthly)

Meeting on the second Saturday each

month, Church Close Community Centre, Wootton, 7pm to 10pm.

Vectis Branch of the Submariners' Association (monthly)

Meeting on the fourth Wednesday each month, Camp Hill Prison Officers' Club, Newport, 7.30pm.

Vectis Railway Enthusiasts (monthly)

Meeting on the third Monday, slide presentations and guest speakers covering all aspects of railway operations, Southern Vectis Social Club, Newport 7.30pm.

MUSIC

Orpheus Singers in Concert (27 November)

Choral, vocal and instrumental music from the 16th to 20th centuries, All Saints' Church, Ryde, 7.15pm, contact Anne Burnett, tel: 730116.

Veni, Veni, Emmanuel (1 December)

A concert of words and music for advent, presented by the choir of St Alban's and friends, St Alban-the-Martyr Church, Upper Ventnor, 7.30pm, admission free, retiring collection.

Magid El- Bushra and Christopher Gould (11 December)

West Wight Arts Association presents counter tenor Magid El-Bushra and pianist Christopher Gould, performing songs by Purcell, Corp, Debussy, Ravel, Ireland, Grainger and Britten, Memorial Hall, Freshwater, 7.30pm, tickets from the Memorial Hall, tel: 752956.

Navarra String Quartet (15 January)

West Wight Arts Association presents

the Navarra String Quartet, playing Haydn, Peteris Vasks and Beethoven, Memorial Hall, Freshwater, 7.30pm, tickets from the Memorial Hall, tel: 752956.

TALKS

Oh yes it is! The History of Pantomime (16 December)

A lecture to Vectis Decorative and Fine Arts Society, by Jane Tapley of the Theatre Royal, Bath, at Medina Theatre, Newport, 8pm, non-members £6, students £2, contact Judith Hook, tel: 854322.

The Land of Lost Content - Britain in Watercolours from 1939 to 1943 (20 January)

A lecture to Vectis Decorative and Fine Arts Society, by Anthony Kelly, at Medina Theatre, Newport, 8pm, non-members £6, students £2, contact Judith Hook, tel: 854322.

THEATRE

Teechers (20-21 November)

A classroom comedy by John Godber, performed by the Cowes Operatic and Dramatic Society, at Ventnor Winter Gardens, 7.30pm, tickets £6 (£5 for under 16s), box office tel: 857581.

Dick Whittington (9-12 December)

Pantomime by Ventnor Theatre Group, Ventnor Winter Gardens, evening and matinee performances.

Red Riding Hood (16-18 December)

The New Strolling Players present a traditional family pantomime, Memorial Hall, Freshwater, 7.30pm (matinee at 2.30pm on 18 Dec), tel: 752956.

These listings are provided free, as a public information service. Details must be submitted either by: **filling out this form, or emailing your details to oneisland@iow.gov.uk**

Please conform to the format shown. Entries are included at the editorial team's discretion. Next scheduled edition: 18 March (listings for period 18 March to 30 June).

Title of event/activity:

Date:

Brief description:

Venue:

Time:

Contact name:

Telephone:

Please return (by 1 March) to:

**Time & Place, One Island, Publications Unit, County Hall,
Newport, Isle of Wight PO30 1UD or email to oneisland@iow.gov.uk**

Be prepared!

Major emergencies and disasters do happen and there are lots of things you can do to protect yourself and others.

The emergency services, local authorities, health trusts, voluntary agencies and utility companies all have co-ordinated plans in place. The aim is to save life, contain the hazard, protect the public and return to normal as soon as possible, but it helps if people know what they can do to help.

There are some simple steps you can take so you are prepared for an emergency. These include:

- △ Making a list of important contacts, such as family, friends and neighbours, children's school, GP, your pet's vet, your utility suppliers, and insurers. Keep copies handy at home, at work or in the car.
- △ Arranging for a friend or relative out of your area to be the family contact point in case your family become separated during an emergency.
- △ Making up an emergency pack for home, work and the car.
- △ Knowing how to turn off your gas, electricity and water supplies.
- △ Know the frequency of local radio stations so you can tune in for public safety messages in an emergency.
- △ Checking your insurance cover is up-to-date.
- △ If you live in a flood risk area, keeping a stock of empty sandbags and sand.

For more information visit
www.iwight.com






What is a major emergency?




A major incident is something on a scale that needs special arrangements to deal with it such as:

- △ **Serious transport accidents**
- △ **Extreme weather**
- △ **Major crime/terrorism/public disorder**
- △ **Explosion/fire/industrial accident**
- △ **Toxic chemical spillage/radioactive release**
- △ **Shortages of essential supplies (such as water, food or power)**
- △ **Infectious disease outbreak**

What should I have in an emergency pack?

At home 	In the car 	At work 
<p>Prepare an emergency pack containing:</p> <ul style="list-style-type: none"> ▲ Battery-powered radio with local radio frequencies marked ▲ Torch ▲ Spare batteries ▲ First aid kit ▲ Copy of your contact list ▲ Bottled water/canned drinks <p>Make an evacuation checklist of items to pack quickly if you are suddenly advised to leave your home. These could include:</p> <ul style="list-style-type: none"> ▲ Your emergency pack (above) ▲ Warm clothing ▲ Essential medication and personal items (such as glasses) ▲ Baby food and nappies ▲ Wallet, purse and bank cards ▲ Mobile phone and charger ▲ Pet carrier/collar and lead (take pets with you if possible) 	<p>This may vary according to the time of year, but keep these items in the car as a basic emergency kit.</p> <p>All year round:</p> <ul style="list-style-type: none"> ▲ Bottled water ▲ First aid kit ▲ Torch and batteries ▲ Car charger for mobile phones ▲ Sweets and longlife snacks <p>October to May:</p> <ul style="list-style-type: none"> ▲ Blanket, warm tracksuit and woolly hat ▲ Waterproof coat ▲ Wellington boots ▲ Spare socks (these can also be used as gloves) 	<p>Know the emergency procedures for your workplace thoroughly. In some situations you might have to remain at your work building for safety.</p> <p>Your building might have good facilities but you should still think about what you would need if you have to stay overnight.</p>

What should I do before, during and after an emergency?

Type of emergency	What to do before	What to do during and after
Severe weather 	<ul style="list-style-type: none"> ▲ Secure outdoor items ▲ Bring pets indoors ▲ Close doors and windows ▲ Draw curtains in case of flying glass ▲ Check on vulnerable neighbours ▲ Monitor TV/radio weather warnings (but unplug TV aerials during thunderstorms) 	<ul style="list-style-type: none"> ▲ Stay indoors until the severe weather passes ▲ Check for damage and make safe if possible ▲ Beware things like fallen cables, weakened trees and loose masonry
Flooding (when a 'Flood Warning' or 'Severe Flood Warning' is issued) 	<ul style="list-style-type: none"> ▲ Move possessions to a higher level ▲ Protect doorways and air vents with sandbags or flood boards ▲ Monitor TV/radio weather reports and the Environment Agency's Floodline (0845 988 1188) 	<ul style="list-style-type: none"> ▲ If your home is flooded turn off gas, electricity and water supplies ▲ Move upstairs if possible ▲ If trapped in deep flooding stay by a window and call for help ▲ When water recedes DON'T switch gas or electricity on until the systems are inspected ▲ Throw away food that has been in contact with flood water
Toxic chemical or radiation release 	<ul style="list-style-type: none"> ▲ Go indoors and stay there ▲ Bring pets inside ▲ Close outside doors, windows and air vents ▲ Turn off fans (such as hot air heating and ventilation) ▲ Cover all unsealed fresh food ▲ Listen to your local radio station for advice 	<ul style="list-style-type: none"> ▲ DON'T go outside until told it is safe to do so ▲ DON'T try to collect children from school unless instructed to do so – they will be looked after ▲ DON'T use rainwater or eat local grown vegetables until told they are safe