

# oneIsland

Your magazine from the  
Isle of Wight Council  
Issue twenty  
November 2008  
[www.iwight.com](http://www.iwight.com)

Bringing a  
smile to our  
communities

**Town centre managers  
restore pride**

Also inside: Budget consultation 2009/2010  
**Celebrating the voluntary sector**



ISLE of  
WIGHT  
COUNCIL



## Welcome



Welcome to the November issue of the council's magazine, which this month includes a special feature about our budget for 2009/2010 and invites your views as we shape our plans for the year ahead.

The input of Island residents to the budget plans is vital in ensuring we deliver services and improvements to the level and of the quality that you require.

A very positive example of how we have responded to the views you have given in our residents' surveys of the past two years is the work of the town centre managers. In this edition we tell you about some of their success stories and our plans to expand the scheme to benefit even more parts of the Island.

Also in this issue is a supplement from our partners at the Isle of Wight Rural Community Council, reporting on some of the excellent work taking place in the voluntary sector on the Island. In future editions we will be including a regular feature from the rural community council on the Island's many voluntary organisations and key rural issues.

Please also take time in this issue to read about the major national debate taking place on the subject of caring for our older people. The Island has a significant role to play in this debate and we are inviting your comments as part of this process.

**Councillor David Pugh,  
Leader of the Isle of Wight  
Council**

**One Island** is published ten times a year, each month except for September and January – these editions are combined with those of the previous month.

If you have community news to share with other readers or would like to advertise in *One Island*, we would like to hear from you.

We also welcome your letters – you can contact us by post, email or telephone.

**Post** **One Island, Communications,**  
County Hall, Newport PO30 1UD

**Email** [Onel Island@iow.gov.uk](mailto:Onel Island@iow.gov.uk)

**Telephone** 823105



## makingcontact

### USEFUL CONTACTS

Isle of Wight Council, County Hall,  
Newport PO30 1UD

**Fax** 823333

**Email** [customer.services@iow.gov.uk](mailto:customer.services@iow.gov.uk)

**Website** [www.iowight.com](http://www.iowight.com)

### TELEPHONE SERVICES

**Call centre** 821000

Mon to Fri: 8am to 6pm

Saturday: 9am to 1pm

For telephone assistance we recommend you contact the call centre directly where we aim to answer as many enquiries as possible at this first point of contact.

#### Popular numbers

Automated telephone payments	559310
Council tax	823901
Education	823455
Environmental health	823000
Housing benefits	823950
Libraries	203880
Licensing	823159
Planning	823552
Refuse collection	823777
Roads and highways	823777
Tourism	813813/813823
Trading standards	823396
Consumer Direct	08454 040506
Leisure services	823828
Wightbus	823782
Dial-a-bus	522226

#### Adult and children's services

Adult services	520600
Children's services	525790
Local centres:	
Cowes	291144
Newport	823340
Ryde	566011
Sandown	408448
Headquarters	520600
Housing	823040

### EMERGENCY NUMBERS

#### In an emergency dial 999

Fire and rescue control centre (24hrs)	525121
Out of hours:	
Highways	525121
Waste disposal	0800 3283851
Wightcare	821105



### FACE TO FACE SERVICES

#### Newport Help Centre

**Tel** 821000

County Hall, Newport PO30 1UD

Mon to Fri: 8am to 6pm

Sat: 9am to 1pm

#### Ryde Help Centre

**Tel** 812678

Ryde Library, 101 George Street, Ryde  
PO33 2JE

Mon to Fri: 9am to 5pm

#### Brading Help Centre

**Tel** 401770

West Street, Brading PO36 0DR

Mon to Fri: 9am to 12 noon

#### Shanklin Help Centre

Falcon Cross Hall, Falcon Road, Shanklin

Mon only: 10am to 4pm

#### West Wight Information Centre

**Tel** 756140

Freshwater Library, School Green Road,  
Freshwater PO40 9AP

Mon: 9am to 5.15pm,

Tues and Wed: 9.30am to 5.15pm, Thur:  
(closed), Fri: 9.30am to 4.45pm. Closed for  
lunch (1pm to 2pm each day)

#### Wootton Bridge Centre

**Tel** 884361

Joanne's Walk, Brannon Way,

Wootton Bridge PO33 4NU

IW Council desk – Mon, Tues,

Thurs, Fri: 9.15am to 1pm

#### Cowes Help Centre

Beckford Court, Beckford Road, Cowes

Fri (mornings): 9am to 12 noon

## council meetings

Unless otherwise stated, all meetings are in public at County Hall. Call 823200 24-hours before a meeting to ensure it is going ahead and to check if any items are likely to be held in private session.

#### Cabinet (Seely Hall, Brook)

2 December (6pm)

#### Planning Committee

(council chamber)

23 December (4pm)

#### Licensing Committee

(committee room one)

8 December (4pm)

#### Scrutiny Committee

(committee room one)

18 December (6pm)

#### Policy Commission for Care, Health and Housing

(committee room one)

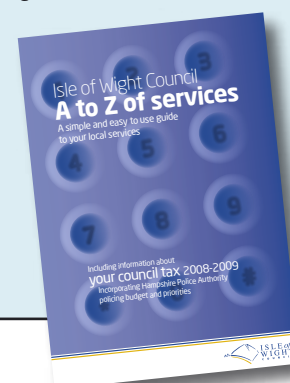
10 December (6pm)

#### Policy Commission for Children and School Results

(committee room one)

3 December (6pm)

A comprehensive listing of all the council's services and contact numbers can be found in the A to Z booklet sent out with your council tax information earlier this year. You can also find an online A to Z of council services at [iwight.com](http://iwight.com)



## NEWS DESK

- 4-9** Council and community news

## FEATURES

- 10** **Bringing pride to communities**  
A look at our town centre managers
- 12** **Budget consultation 2009/2010**  
Give us your views
- 14** **Voluntary sector news**  
Special supplement from the Rural Community Council
- 16** **Shaping their future**  
National debate on care for older people
- 18** **Celebratory walking weekend**  
Autumnal anniversary for popular event

## REGULARS

- 19** **Coast and country**  
Rural and coastal news
- 20** **Trailers**  
Events and activities

Cover picture: Ryde town centre manager Jacqui Darby



ONE ISLAND is published by the Isle of Wight Council. The council does not accept responsibility for goods or services offered by advertisers. Additional copies are available from the Customer Service Centre at County Hall, libraries and other council facilities. Typetalk calls welcome.

Written, designed and produced by Corporate Communications, Isle of Wight Council.

ISSN 1752-8038

© COPYRIGHT 2008

Isle of Wight Council,  
County Hall, Newport,  
Isle of Wight PO30 1UD.

Printed on paper from sustainable sources by Belmont Press.



When you have finished with this magazine please pass it on or recycle it

# Islandimage



Hanover Point, by Paul Jackson

One Island is available on request as an audiotape, in large print, in Braille and in other languages. For further details, please contact One Island on 823105. The magazine is also available online at [www.iwight.com](http://www.iwight.com)



## Investigating the biomass route



The amount of sustainable wood fuel that could be harvested from Island woodlands is to be assessed following the award of a grant of £6,500 to the council.

The grant, from the South East Woodland and Timber Fund, will also allow the council to see how much clean and waste wood can be supplied to markets to generate sustainable biofuels.

Initial estimates have shown there may be enough to generate between seven and ten megawatts of heat using biomass boilers.

As yet, few biomass boilers have been installed on the Island, but the council hopes more businesses and individuals will be encouraged to use biomass – a renewable and carbon neutral fuel that is competitively priced against conventional fuels.

Biomass fuel includes conventional logs as well as wood chips and pellets.

Following the initial assessment, the council will hold an open day for Islanders – at Newport Football Club on 28 and 29 November – to view biomass boilers and the different types of fuel. Experts will be on hand to explain the benefits of the boilers and provide advice on sourcing and installing them.

There will also be a training event for woodland owners and biomass fuel suppliers explaining how to produce high quality and consistent fuel which is required by the market.

If you are interested in finding out more about biomass heating or supplying fuel you should contact the council's sustainability officer, Jim Fawcett, on 821000 or email: [jim.fawcett@iow.gov.uk](mailto:jim.fawcett@iow.gov.uk)

## Advice for large events is updated



New guidance has been developed to make sure large scale events on the Island are staged without causing undue problems for residents.

It follows a study into the Isle of Wight Act – legislation that was introduced to control events after the problems of the Afton Down festival of 1970. The study, by the policy commission for safer communities, took evidence from interested parties.

It had been suggested the act was a deterrent to festivals and even smaller events such as summer shows.

It is hoped the new guidance – formulated after gathering evidence from festival promoters, event organisers and emergency services – strikes a balance between encouraging large scale events and making sure the public is protected on safety, health, noise, crime and disorder issues.

The guidance sets out which events need to apply under the Isle of Wight Act but makes it clear that where possible a lighter touch will be applied in the case of community events.

## Islanders back Future Energy Days

Around 600 people attended three recent events at Newport, called Future Energy Days, offering information about renewable energy and fuel efficiency.

The events were organised by the Footprint Trust, and offered help to householders facing high energy bills, with advice about subsidised and free insulation schemes.

The trust also offered detailed guidance on how best to save energy in the home, and the events distributed 200 low-energy lamps and dozens of save-a-flush bags.

Businesses attending the events at the Riverside Centre, Newport were advised about 'Energy Options, Profits &



Savings' by Business Link – with some 20 representatives from small and medium sized businesses informed about renewable technologies.

Ray Harrington-Vail of the Footprint Trust said: "Most people we met were in favour of renewable technologies in the light of soaring fuel costs, climate change and dwindling fossil fuel reserves."

## Grants to help older people



Help the Aged is reminding voluntary and community groups on the Island that they can apply for grants of up to £500 to assist with the needs of older people.

The support is available through a fund called Lease for Life, a joint venture between Help the Aged and the council set up in 2007 (with both partners contributing £5,000) and administered by Age Concern.

The fund is also aimed at supporting a programme called Older Voices, appointing older people's champions on the Island. The programme consists of the development of a network of champions and circles, to find out the views and priorities of older people, and work closely with parish councils.

To find out more about the Lease for Life fund you should contact Age Concern Isle of Wight at 14 Pyle Street, Newport, tel: 525282.

## Clock face restored



PICTURED:  
The stone  
face of the  
new clock

Newport Minster's south facing clock face has been replaced and its clock mechanism repaired following a contribution of £15,149 from the council.

The new 1.2 metre diameter stone face was created by craftsmen from Wells Cathedral Stoneworks.

The extent of damage to the south facing clock face was recently discovered by experts working on the tower of the minster (Sts Thomas Church). It had been hoped that both south and west faces could be restored, but the south face was found to be too weatherworn and required replacement.

The original west facing stone clock face will be restored as originally planned.

The church approached the council for assistance in replacing the historically important clock face, a key landmark in Newport.

Canon Stephen Palmer of Newport Minster, said: "We have just become a minster, which recognises us as a special church serving the whole community. Being at the heart of the Island, it is fitting that the council has stepped in to support this part of the restoration project, which all members of the community can use and enjoy."

## Outreach welfare law service at Ryde



PICTURED (left to right): Barry Kemp of the Park Centre and Matt Thatcher and Suzanne Davis of the Law Centre

A new social welfare law service has been made available at Ryde after the Law Centre at Newport was able to secure funding from the Legal Services Commission.

It means the Law Centre in St Cross Lane, Newport is now bringing outreach surgeries offering advice on debt, housing and welfare benefits to the Park Centre, on the corner of East Hill Road and High Park Road, Ryde.

The service is available to those on low incomes or benefits and covers issues including: eviction notices, repossession, county court hearings, help with benefit issues including appeals and all aspects of debt issues.

The Legal Services Commission had identified that there was a lack of social welfare law supply in Ryde.

Suzanne Davies, a debt and housing caseworker, who will be delivering some of the services at the Park Centre, said: "We are pleased to have been able to extend our service to reach those who may not be able to get to our Newport office. We urge anyone facing financial difficulty, whether personal debt or issues affecting their housing or income such as appealing against benefit decisions, to call the Law Centre for an appointment."

Barry Kemp of the Park Centre said the service was crucial to the sustainability of the much-valued centre.

Anyone needing help or assistance should call 524715 for an appointment at Newport or Ryde.



## New community sports facility for Pan

The Pan area of Newport has a new floodlit all-weather sporting facility.

The new multi-use games area or 'Muga' (pictured left), opened early in November, and is sited by Downside Middle School.

The facility has been created thanks to the work of members of the Pan community, the Pan Neighbourhood Partnership and the Isle of Wight Council.

The new area will provide a focal point for the community and offers young people at Pan a place to play sports including football, basketball, netball and hockey. The site will be floodlit until 9pm on weeknights and Saturdays and 6pm on Sundays and bank holidays.

There will be no need to book or pay to use the facility, and the site will be managed and maintained by Downside Middle School.

John Norledge, of Pan Neighbourhood Partnership, said: "Providing activities for young people has been the top priority at Pan. This will mean a real focal point for the whole of the community."





Island landlords are being encouraged to sign up to a project to help find more local people decent homes.

The Find a Home project also helps landlords who are struggling to let their properties during the economic downturn.

Under the scheme the council works with landlords and letting agents to help maximise the Island's housing options, particularly assisting people who otherwise might find it hard to access good quality housing.

The council enters into an agreement with landlords for a fixed period to rent out their properties to residents on the Housing Register. There is a normal Assured Shorthold Tenancy agreement between the landlord and tenant and the property is managed by the landlord or an agent acting on his behalf. Affordable rents are agreed with the landlord in advance based on the current

local housing allowance for the property type.

In exchange, the council is offering landlords incentives including:

- the possibility of an initial one off payment to landlords for every property taken on;
- a guarantee for damage caused by tenants above fair wear and tear up to a maximum of £3,000;
- rent guaranteed for the life of each tenancy.

Prospective tenants nominated under the scheme by the council will have been threatened with homelessness and unable to access accommodation for themselves by any other means.

The scheme has been underway since July and there has been significant take up.

If you are interested in working with the council under this scheme and wish to know more, please contact the council's housing services on 821000.

## Big thank you to the Women's Land Army



Next month will see a special function on the Island to acknowledge the major contribution to the Second World War effort by the Women's Land Army and Timber Corps.

More than 150 former members of the land army living on the Island have been invited to an event at the Riverside Centre, Newport on 15 December hosted by the Island's Lord Lieutenant Major General Martin White and the chairman of the council, Councillor Arthur Taylor.

The event is part of national commemorations of the Women's Land Army and associated groups, who earlier this year received special badges acknowledging their contribution.

## Aiding businesses during the crunch

A new quicker payment initiative has been put in place by the council to help businesses during the economic downturn.

Invoices to the council from Island businesses will now be given priority and paid in the same week they are received by the payments section.

The council's existing policy had been to pay all invoices received according to terms outlined by the supplier, usually 30 days.

Council leader Councillor David Pugh said: "It is hoped this small step will go some way to easing the burden faced by Island businesses during these difficult and uncertain financial times. All other invoices will continue to be paid in accordance with their normal terms."

In addition to the measures taken to assist local businesses the council is also looking at ways of assisting families and individuals on the Island.

The council has set up an anti-poverty group consisting of representatives from the Department of Work and Pensions, Citizens' Advice Bureau, the Law Centre and the

council's own housing, council tax, business rates and benefits teams, Age Concern, HM Revenues and Customs, Job Centre Plus, Supporting People, Connexions and various housing associations.

The group is monitoring the economic situation by looking at things such as income maximisation, debt advice assistance and the level of repossessions on the Island to see if trends emerge. It will then investigate ways to assist those in financial difficulty.

If anyone has any concerns about personal debt, independent and free advice is available from the Citizens' Advice Bureau, tel: 520594 and the Law Centre, tel: 524715.





## Leading the graffiti crackdown

Specialist cleaning equipment has been used to remove graffiti at more than 100 sites across the Island.

High powered water jets and specialist gel have been used to remove graffiti in towns including Sandown, Newport and Ryde.

The graffiti crackdown was linked to Not in My Neighbourhood Week held in October, with people encouraged to call a graffiti hotline or contact a special web page.

The council's town centre managers and community support officers and staff from partner agencies also reported locations.

Cabinet member for safer communities, Councillor Diana Tuson, said: "Graffiti is unwelcome and can leave local residents upset and fearful of crime in their area. It is the second year we have used the hotline and it will continue to be there for residents who want to see graffiti removed."

The hotline is operated by the council's community safety service on 823515, and the website is at [www.iwight.com/graffiti](http://www.iwight.com/graffiti)

## Backing for Island abattoir move

Isle of Wight Council support has been offered to moves to attract a quality abattoir operator to the Island.

The backing follows a 14-month inquiry by the council's policy commission for business and infrastructure into what could be done to establish a slaughterhouse on the Island.

Evidence was gathered from organisations and individuals including the local National Farmers' Union, the English Beef and Lamb Executive, the Rural Community Council and the Department for Environment, Food and Rural Affairs.

The council was keen to investigate what it could do to encourage a local abattoir for a number of reasons including animal welfare issues, reducing 'food miles' and helping to stimulate the local economy.

The council has never sought to establish an abattoir itself but is keen to offer what incentive it can to encourage a private operator.

Such assistance could include help with finding a site, giving support for grant applications and providing guidance on enforcement where the council is the enforcing authority. It is also the belief that a firm policy statement in favour of an abattoir could generate confidence among potential investors.

The Island has been without an abattoir since the closure of the FMC Hilldown plant in Newport in 1987.

## Young walkers given challenge for 2009

Every Island school is being challenged to play a role in fund raising for the 2009 Walk the Wight.

In 2008 Island schools helped raise £35,000 towards the record-breaking £350,000 generated by Walk the Wight for Newport's Earl Mountbatten Hospice.

More than 2,000 schoolchildren from 56 schools totalled 26 miles each through activities including walking to school, walking events held at schools, and walking with family and friends.

More than 1,000 pupils also walked four miles from Freshwater Bay to Alum Bay as part of Walk the Wight in May.

The first schools' Walk the Wight was held in 2006, the idea of Helen Stichbury, school travel plan advisor for the council, and Louise Gray, health promotion officer for the Isle of Wight NHS Primary Care Trust.

Councillor Alan Wells, the council's cabinet member for children and

young people, said: "The hospice team provides excellent liaison and guidance to the co-ordinators at each school all through the year, as well as for the event in May. I am sure we will see even more raised next year."

Jenifer Smith, director of public health and chief medical advisor, said: "Schools' Walk the Wight is an excellent way for adults and children to work towards the recommended amount of five 30 minute sessions of activity per week for adults and seven sessions of 60 minutes of activity per week for children."

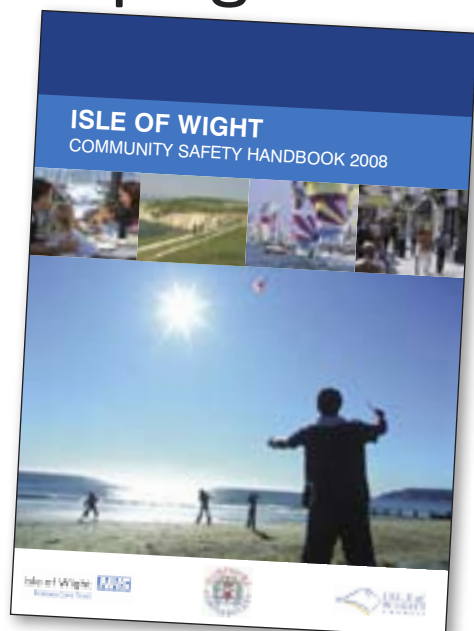
Information packs have already been sent to schools for 2009, encouraging them to start walking towards their 26 miles. Further information is available from Karen Eeles at the hospice on 528989.

Every child who walks 26 miles between now and May will receive a free t-shirt, gold medal and certificate.





# New booklet gives advice on keeping safe



More than 60,000 homes on the Island are being sent a copy of a new booklet giving advice on how to keep safe and secure in their lives.

The Isle of Wight Community Safety Handbook 2008 includes useful contact numbers and information on what you should do if you ever need help.

The handbook has been put together by the Isle of Wight Crime and Disorder Reduction Partnership, which includes the council, Hampshire Constabulary, Isle of Wight NHS Primary Care Trust and the Isle of Wight Rural Community Council.

The partnership has worked hard to reduce crime across the Island and its initiatives have helped towards significant reductions in burglary, vehicle crime and criminal damage. The partnership is also working on projects to reduce other types of crime, particularly violence and disorder associated with alcohol misuse.

The handbook contains information on topics including home safety, personal safety, safe travel on public transport and in taxis, road safety, and reporting anti-social behaviour.

Residents are being asked for their feedback and any suggestions for next year's version of the booklet.

Councillor Diana Tuson, cabinet member for safer communities, said: "The Isle of Wight is a very safe place to live, as recent crime statistics show. The booklet is a very useful tool for households as it contains very important information and contact details for a variety of services should you ever need to get in contact with anyone."

## iwight.com wins top award

The council's *iwight.com* website has won the Best Public Sector Website category at the Hantsweb Awards for the second year in a row.

Judges described the site as "well structured, consistently presented, and with a good mix of reference and pro-active content". They also said it was informative, topical and easy to navigate, and commended its A to Z approach to finding services.

Customers can use *iwight.com* to access a range of services run by the council. This includes online payment of council tax, latest roadworks, information about forthcoming meetings and planning applications. In October this year almost 4.5 million pages were viewed by visitors to the site.

The Hantsweb Awards are run by Hampshire County Council and celebrate excellence in website design, accessibility and service. The awards are open to any website based in Hampshire and the Isle of Wight.



## Island recycling helps people of Malawi

A special apple tree has been planted (*pictured*) at Haylands Farm, Ryde to mark the Isle of Wight's efforts in recycling aluminium cans.

Haylands Farm and Island Waste Services have been taking part in a recycling appeal – Recycle for Africa – which promises to grow a fruit tree in Malawi for every tonne of aluminium drink cans and foil recycled over a two year period.

The campaign is half way through, and so far has led to 46 fruit trees being donated to the project in the African country.

Recycle for Africa is run by not-for-profit organisation, Alupro, in partnership with British charity Ripple Africa, in a bid to tackle deforestation, improve nutrition and establish new businesses for fruit drying and juicing.

All the cans deposited in the Island's can banks – annually more than half a million – are collected and recycled by Haylands Farm and sold to Island Waste Services.

Charles Cook, of Haylands Farm, said: "We are delighted that residents have got behind the campaign as each aluminium can counts to helping this worthy project, but also helping support Haylands Farm as we turn the aluminium cans into cash, which helps us maintain the farm and the projects we run."

The apple tree planted at the farm is in remembrance of Mark Luter, who passed away recently, and who had attended the farm for more than 30 years.

## You can help influence new disability strategy

Island residents aged between 18 and 64 with a physical or sensory disability are being invited to help shape a new joint strategy for disability services on the Island.

The council and Isle of Wight NHS Primary Care Trust are hosting a meeting at the Riverside Centre, Newport on 3 December and are hoping to attract a broad range of views.

The event, between 1pm and 3.30pm, will provide the chance for views to be expressed on existing and future services, and partner agencies will also be invited.

Information gathered at the event will be used to help develop a comprehensive plan.

If you would like to take part in the event, please contact Louise Biggs in the council's community services on 823099, email: [louise.biggs@iow.gov.uk](mailto:louise.biggs@iow.gov.uk), post: Louise Biggs, Community Services, Bugle House, 118a High Street, Newport PO30 1TP.



# Car park safety recognised

Crime reduction improvements in two council parks have been acknowledged with the award of Park Marks by the Association of Chief Police Officers.

Coppins Bridge car park in Newport and St Thomas Street (upper) car park in Ryde have been recognised for meeting the strict criteria needed to qualify for the awards.

Park Mark is the award given for car parks that have achieved the standards of the Safer Parking Scheme, which is designed to reduce crime and the fear of crime in car parks.

The car parks must have good surveillance, lighting, signage, cleanliness and well-defined parking areas.

The Park Mark assessor described Coppins Bridge car park as: "A fine example of what a council can do as a template to reduce crime and disorder within a parking facility. Eighteen months ago it was subject to anti-social behaviour and crime, now that the layout has been altered, lighting upgraded and a new lamp installed, reported incidents of anti-social behaviour is currently nil, and crime has reduced to three offences in a 12 month period."



PICTURED: Coppins Bridge car park, Newport

## Celebrating 25 years of twinning links



The Isle of Wight and Coburg in Germany have this year been celebrating the 25th anniversary of twinning links which have seen many cultural and community exchanges during the past three decades.

The anniversary was marked during civic visits by a delegation from the Island to Coburg late in August, and by a delegation from Coburg to the Island in September.

The original twinning agreement was signed between the former Medina Borough Council and Coburg 25 years ago, and was taken on by the Isle of Wight Council in the mid-1990s.

Links are maintained and developed by the Isle of Wight German Twinning Association, formed by the amalgamation of previous twinning groups the Island had with Coburg and Ostholstein in Germany. Over the years there have been many visits involving youth, music and other community groups between the Island and its German twin areas.

If you are interested in joining the Isle of Wight German Twinning Association, more details can be obtained from the association secretary, Peter Jackson, email: [twin@roselake.co.uk](mailto:twin@roselake.co.uk)



## Jet gunning the gum!

A crackdown on the chewing gum scourge blighting Newport's pavements has been taking place in recent weeks.

The council has brought in special machinery to tackle the gum in areas including South Street and Orchard Street.

The machine works by using a powerful jet gun to remove the gum from surfaces. The success of the project will be analysed and possibly extended to other parts of the Island.

## Funds help Island's young people



More than 1,500 young people on the Island have benefited this year from grant funding under the Youth Opportunity and Youth Capital Funds.

The funds, administered by the council, have supported 49 projects in 2008, ranging from support for high level sports coaching and development, to young people putting on their own drama productions.

Among those supported have been 1st Ryde and Binstead Scouts, Solent Youth Theatre Production, Sandown and Lake Football Club and the Isle of Wight Young Arthritis Support Group.

Grants from a few hundred pounds up to £10,000 are available through the funds, and all decisions on assessing and funding projects are made by a panel of young people.

In 2008, £125,000 has been distributed, and some capital funds for work on buildings are still available for groups to apply for.

Anyone wishing to find out more about funding from the Youth Opportunity and Youth Capital Funds can contact Matthew Bell on 529790, email: [Matthew.bell@iow.gov.uk](mailto:Matthew.bell@iow.gov.uk). Details are also available at the council's website at [www.iowight.com](http://www.iowight.com)

The council recently announced plans to expand its successful town centre managers' scheme. Here we look at how the initiative has played a major role in helping restore pride to many communities across the Island

BELOW: Some of the Island's town centre managers with community support officers and dog wardens



# Bringing pride to Island communities





SINCE ITS launch in 2007, the town centre managers' initiative has brought many visible improvements to towns throughout the Island.

Eight towns benefited during the first year, and with positive feedback from residents, town councils and other partners, a decision was made to further expand the scheme to create five patrol areas.

Council leader Councillor David Pugh announced plans to extend the project at a recent conference for town and parish councils, called Power to the Parishes.

It is hoped the enhanced service will be fully operational from next month.

The town centre managers' scheme was introduced by the council in September 2007 with the aim of improving the Island's towns, tackling anti-social behaviour, addressing problems with litter and cleanliness and to increase public reassurance.

The eight towns initially allocated town centre managers were Cowes, East Cowes, Freshwater, Newport, Ryde, Sandown, Shanklin and Ventnor.

In the past 14 months the town centre managers have developed their roles to become key communicators within Island towns, identifying problems and quickly developing solutions with other council departments and partner agencies.

Clear evidence of their effectiveness has been with the steady decrease in the number of

anti-social behaviour incidents in the Island's eight main towns. In July this year, 716 incidents were dealt with by the town centre managers, many of which were identified by the managers themselves during patrols of their areas.

They have also launched projects involving members of the community, designed to create an increased sense of pride among residents.

Under the expansion plans for the scheme, the Island is being divided into five patrol areas, with teams of environment and neighbourhood officers allocated to each. The new scheme is being made possible by using existing community support officers who are already doing valuable work within some of the Island's rural communities.

## Town centre managers – success stories so far

The projects undertaken by the Island's town centre managers have been many and varied during their first year.

As well as tackling neglected and vandalised sites, they have sought to promote schemes brightening up and contributing positively to their communities.

Cowes, Sandown and Ryde now have a series of new murals

at various locations, bringing some colour to the townscape, with community groups heavily involved in the projects.

At East Cowes there has been extensive community co-operation in tackling the nuisance of litter. In September there was major local clean-up as part of the national Big Tidy Up project, organised locally by town centre manager, Gillian Mulcahy.

As well as the Big Tidy Up, Gillian has initiated various other projects to improve the public realm at East Cowes, including 'Thumbs Up', an anti-litter pledge supported by local schoolchildren.

East Cowes is also benefiting from repairs to information panels around the town, and the floating bridge waiting room has been repainted in a scheme involving the probation service.

At Freshwater, town centre manager involvement has helped create an innovative new youth shelter, and at Shanklin projects have included the reopening of the town's help centre, which is already dealing with an average of 15 incidents an hour.

At Ventnor, town centre manager Rob Reed has organised the installation of a Welcome to Ventnor noticeboard, funded by the police and Ventnor Town Council, as well as the Isle of Wight Council.

The noticeboard will be used to advertise a wide range of community information about Ventnor and is being placed in the plaza area next to the central car park in the High Street. Other improvements at Ventnor include the new Trinity Road bus shelters, jointly funded by the Ventnor Enhancement Fund, Southern Vectis and the council and inspired by a local resident.

Town centre managers also recently joined dog wardens and community support officers in high visibility patrols in Cowes and Ventnor to educate dog owners and enforce dog fouling regulations. The patrols were in direct response to feedback from residents at community forum meetings across the Island.

And at Sandown, Ryde and Newport town centre managers took part in nighttime patrols with police community support officers on Friday and Saturday nights to address low level anti-social behaviour.

## Contacting your town centre managers

If you wish to get in touch with your town centre managers, you should call 821000, or email: [community.safety@iow.gov.uk](mailto:community.safety@iow.gov.uk)



Freshwater youth shelter (top) and the floating bridge waiting room at East Cowes (pictured) have both benefited from the town centre managers' scheme



# Helping shape the council's budget for 2009/2010

The next few months will see the Isle of Wight Council planning and setting its budget for the year ahead.

The input of Island residents is crucial to this process, and here we explain how the budget is being shaped for 2009/2010 and ask you to provide your views on what should happen.

You can make your contribution by completing and returning the form on the opposite page, and there will also be other channels of consultation including focus groups and online input over the coming weeks.

*Please tell us what you think so we can set a budget that meets your needs*



## Explaining the council's budget

### How is the council funded?

The funding comes from four main sources:

- **Council tax** In 2008/2009, the £65.9 million the council raised from council tax was about 20 per cent of our annual gross budget. Each one per cent increase in council tax provides an additional £660,000.
- **Central government grants** The council receives around £212 million or 67 per cent of its funding for services from the government, which includes £155 million as specific and dedicated schools grants.
- **Fees and charges** The council raises £41 million from fees and charges, making up close to 13 per cent of the budget. This includes income from areas such as car parking, leisure activities and planning fees (set nationally).
- **Reserves** Last year the council agreed to use £5 million of its balances to fund services, making up around 1.5 per cent of the budget.

### How does the council prepare its budget?

In developing its budget, the council has to account for a number of factors:

- Its vision and strategic objectives (outlined in the Eco Island strategy).
- The results of budget consultations and residents' surveys, which help shape our One Island programme of improvement projects.
- Our medium term financial plan, which considers changes to the budget including bids for increased spending on services, additional external pressures, and savings from improved performance or reductions in services.
- Medium term revenue and capital strategies that help the council redirect its resources to its priorities.

### What limitations are there?

The council is required by law to fund a range of 'statutory services', eg licensing, education, child protection, concessionary fares etc.

This means that the council is limited in the chances it has to vary spending and to make savings.

At the same time the council must maintain reserves and balances and meet other legal and financial constraints.

### What other pressures are there?

Economic factors relating to the 'credit crunch', the depressed housing market, and increased costs and inflation will all have an impact on the costs the council incurs and the income it generates.

These increases in costs and reduced levels of income are not offset by any additional grant funding from the government, and in real terms the level of our grant funding has reduced.

So the Isle of Wight Council, like other councils and our residents, faces serious financial pressures.

These pressures include:

- **Concessionary travel scheme** The national concessionary travel scheme for residents over 60 and those with an eligible disability. Following consultation, the Isle of Wight extended its local scheme, resulting in an unprecedented number of concessionary journeys. The net cost to the council after government funding is currently more than £3.6 million.
- **Car parking income** Partially due to the increased numbers of concessionary bus journeys, we are forecasting car parking income falling by £1 million.
- **Landfill tax** Increases in landfill tax will cost an estimated additional £320,000.



- **Land charges** Due to the drop in the housing market and changes to the purchase process we are forecasting a reduction in income from land charges of £300,000.
- **Planning fees** Forecasts for planning applications and building control fees estimate a reduction in income of £610,000 due to a reduction in levels of development.
- **Fuel costs** Increases in fuel costs are estimated to be £267,000.
- **Inflation** An additional £1.3 million on the cost of community care services is forecast due to inflation.

## Where can we make savings and find extra income?

The council is working hard to cut its costs while securing the best possible value for money for Island residents.

This includes finding savings that do not involve cuts to front-line services.

Savings intended for 2009/2010 include:

- reductions in the council's senior management structure, £500,000;
- insurance procurement, £234,000;
- improved business systems, processes and supplies, £970,000;
- rationalisation of our properties, £200,000 (although the current economic downturn is causing delays in this area).

## What about our capital budget?

Our capital budget covers large items of spending such as new buildings, roads or major pieces of equipment, and is funded from five sources:

- Amounts allocated by central government as borrowing.
- Revenue budget savings or directly from council tax.
- Capital grants and contributions.
- Capital receipts from the sale of assets such as property.
- Contributions from the revenue budget of a council service.

Due to the economic downturn, the level of capital receipts available to fund capital spending this year has fallen from an expected £5.5 million to just £1 million. This will mean cutting back on the planned capital programme for this year and limiting the programme for 2009/2010.

## What does this all mean for next year (2009/2010)?

The council is facing difficult decisions because its funding does not cover the budget. It means a funding gap of £11.9 million in 2009/2010.

This funding gap can be met from using our bank balances, efficiency savings and savings from reductions in services.

## Setting the council tax

Last year the council's strategy for council tax was to set an increase in line with inflation, a rise of 3.9 per cent.

Our ongoing budget strategy assumed increases of 3.5 per cent in 2009/2010 and 2010/2011. However, inflation has increased well above this, and at September 2008 stood at five per cent.

The government sets a council tax-capping limit for all councils, above which they may not go. Last year the limit was five per cent. The figure for 2009/2010 has not yet been announced.

## Budget consultation response form

You are invited to give us your views by completing this response form and returning it to:

**Communications and PR, FREEPOST SCE774, Isle of Wight Council, County Hall, Newport, Isle of Wight PO30 1UD**

You can also complete a form online at the council's website at [www.iwight.com/budget2009/survey](http://www.iwight.com/budget2009/survey)

The council will set its budget and council tax for 2009/2010 at a meeting on 25 February at County Hall, Newport.

**Would you be prepared to pay more for the residents' parking permit if it included on-street parking?**

☐ Yes ☐ No if yes: ☐ +£25 ☐ +£50 ☐ +£75

The council policy is to set council tax at the rate of inflation (Retail Price Index) at September. This was five per cent. If the council reduced this increase then services would have to be reduced.

**Would you prefer that the council tax increase should be:**

☐ 5% thus maintaining more services to residents ☐ 4.5% and reducing services by £330,000  
☐ 4% and reducing services by £660,000 ☐ 3.5% and reducing services by £990,000

**If you voted for a council tax increase of less than five per cent how should the council make up the difference?**

Please tick the top three	Savings each year
<input type="checkbox"/> By reducing over 60s concessionary travel to the statutory minimum, ie only between 9.30am and 11pm	saving £280,000
<input type="checkbox"/> By reducing spending on adult learning disability services	saving £500,000
<input type="checkbox"/> By stopping the Student Rider Scheme	saving £500,000
<input type="checkbox"/> By increasing residents' parking permits by £25	saving £150,000
<input type="checkbox"/> By reducing spending on customer services and help centres	saving £150,000
<input type="checkbox"/> By reducing spending on libraries	saving £150,000
<input type="checkbox"/> By increasing charges for leisure facilities by ten per cent	saving £200,000
<input type="checkbox"/> By reducing support to theatres	saving £150,000
<input type="checkbox"/> By reducing support to events on the Island	saving £280,000

**Are there any other areas that you feel the council should look at?**

Please detail below:

## Welcome

Welcome to our new, regular feature in *One Island*.

Voluntary Sector News will provide information and stories that highlight the role voluntary and community groups and volunteers play in making Island life that bit better.

The variety of entrants to this year's Community Action Awards says it all: from community gardens in East Cowes to heritage centres in Bembridge; from scout groups in Binstead to boxing clubs in East Cowes; from running sports clubs for people with disabilities, to creating networks of support for older people; from supporting vulnerable young people to delivering environmental and recycling projects – the voluntary and community sector does it all and the commitment and passion of volunteers make it possible.

As the support body for voluntary and community groups the Isle of Wight Rural Community Council is working hard to represent the sector, to support volunteering, to provide advice to individual organisations and groups, co-ordinating networking opportunities and raising the profile of the sector.

I hope that the news and stories we feature in the coming months will be of interest and if you are an organisation with a story you'd like featured, then let us know.

If you can help with our 'Voluntary Sector Snapshot' (opposite) that would be greatly appreciated, and if you want to get involved in one of the networks or to volunteer then please don't hesitate to call us.

**Mike Bulpitt,**  
 chief executive,  
 Isle of Wight Rural  
 Community Council

## Community Action Awards 2008



© Isle of Wight County Press

Ryde Inshore Rescue (*pictured above*) was the winner of this year's Community Action Shield at the 15th annual Community Action Awards held at Quay Arts, Newport in October.

A total of 57 Island voluntary and community organisations took part with 18 sharing the £6,000 prize pot. Ryde Inshore Rescue received a prize of £1,500 and Sandown Methodist Church received £750 as runner-up.

The awards were presented by the Island's Lord Lieutenant, Major General Martin White, and sponsored by the Isle of Wight County Press, Isle of Wight Charitable Trust and the Isle of Wight Rural Community Council.

### Ryde Inshore Rescue

Ryde Inshore Rescue is HM Coastguard's main maritime rescue service for the coastal area from Osborne Bay to St Helen's Fort. Its major role is the

provision and maintenance of an efficient inshore lifeboat and the promotion of sea safety.

This year it has responded to 47 call-outs, assisting or rescuing 113 people. The call-outs varied from assisting with a heart attack victim outside the Appley Esplanade HQ, to being called out to rescue two youths who had fallen out of their dinghy (one was recovered unconscious and face down).

A total of 37 dedicated and highly trained volunteers from all walks of life make up Ryde Inshore Rescue, undertaking administrative work, training and fund raising activities alongside their maritime rescue role. The team relies entirely on donations and other fund raising initiatives to support its aims.

### Sandown Methodist Church

Sandown Methodist Church has initiated several projects for parents and families in the Sandown area, thanks to the dedication of a small group of volunteers working with Rev Frances Watson and Anne Burgess (*pictured below*).

The initiatives include encouraging parents and children to enjoy monthly walks together, and a clothes swap scheme, for parents to recycle their children's outgrown clothing and source good quality replacements.

The group's prize money from the Community Action Awards will go towards buying new kitchen and safety equipment and a baby changing unit.



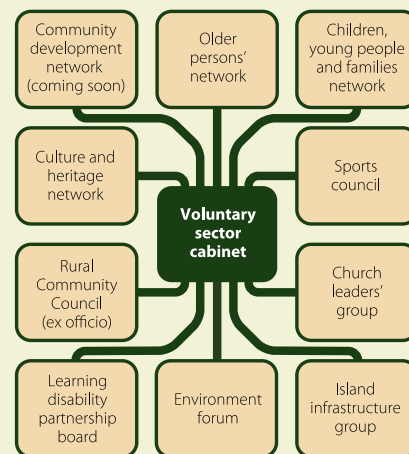
© Isle of Wight County Press

## Networking can make a difference

When you're a small and busy voluntary organisation it's not always easy to keep track of all that is going on. Being involved in local networks is one way of helping you to do this.

The networks represent a chance for information, training and best practice to be shared and discussed, and for individual voices to be heard.

If you are a voluntary or community organisation and you think partnership working or simply 'being heard' will help, please get in touch with the Isle of Wight Rural Community Council. The diagram opposite illustrates the networks that it currently supports.







# Volunteer centre

If you would like to help manage the Island's natural environment, or perhaps you can offer free legal advice to a local charity, there is always a volunteering opportunity to match your aspirations.

The Isle of Wight Volunteer Centre helps volunteers and organisations needing volunteers, to find each other. There are now more than 150 volunteering opportunities available locally. Here are a few to give you a flavour:

- Helpers with sailing experience are required by **Fishbourne Sailability**, which provides activities afloat for adults with disabilities.

- If you have a driving licence, enjoy working with people and don't mind doing some manual work then **Haylands Farm** at Ryde would like you to help with its fund raising and support its clients with learning disabilities, by helping with its can recycling project.

- Search team members are required by **Hampshire Search and Rescue** to form a team dedicated to assist police in searches for missing vulnerable people.

- The **Isle of Wight Society for the Blind** would like to recruit home visitors to pair up with visually impaired persons, to provide social contact and build confidence and independence.

If you are interested in learning more about these and other opportunities please contact Helen on 539377 or email [volunteer@iwrcc.org.uk](mailto:volunteer@iwrcc.org.uk)

## The value of the Island's voluntary and community sector

The Isle of Wight Rural Community Council is working to increase understanding about the role of the Island's voluntary and community sector.

As a part of this work, a one week voluntary and community sector snapshot is being undertaken; this will be combined with other sources of information to produce a clearer picture of the contribution of volunteers and voluntary and community groups and organisations.

### Snapshot recording form (for week starting Monday 1 December ending Sunday 7 December)

Please help us by completing this form; giving as much detail as you can about your activities, volunteers and supporting staff and the people taking part or benefiting.

Name of organisation or group

Focus of organisation or group (please tick one)

- ☐ Sports & leisure
 ☐ Heritage & culture
 ☐ Health & care
 ☐ Uniform group
 ☐ Social & community  
☐ Pastimes & hobbies
 ☐ Environment
 ☐ Faith & church
 ☐ Learning

Other (please state)

Contact name

Email address (or contact details if no email)

Please complete a separate row for each activity taking place or service delivered during the week, eg if there are two or more club meetings, football matches, day care or outreach sessions, each one should be recorded as a separate activity.

Description and location of activity	Number of volunteers supporting activity	Approximate total hours of volunteer activity including preparation	Number of paid staff supporting activity (if applicable)	Number of people taking part and/or directly benefiting from activity
			F/T P/T	
			F/T P/T	
			F/T P/T	
			F/T P/T	
			F/T P/T	

Additional forms are available by contacting:

Tel: 524058

Website: [www.iwrcc.org.uk](http://www.iwrcc.org.uk)

Email: download an electronic form, complete and return to [snapshot@iwrcc.org.uk](mailto:snapshot@iwrcc.org.uk)

Online survey: [www.survey.bris.ac.uk/iwrcc/snapshot](http://www.survey.bris.ac.uk/iwrcc/snapshot)

By post: Please return forms to the FREEPOST address: Freepost RRYE – ARZZ – JTXC, Isle of Wight Rural Community Council, 3 Langley Court, Pyle Street, Newport, Isle of Wight PO30 1LA

Forms in alternative formats are available from the Isle of Wight Rural Community Council

Complete and return this form and you could win a new £300 digital camera!

# Helping to shape the future for our older generations

People on the Island are being asked to join a major national debate on the care of older people.

The Isle of Wight's elderly population is growing faster than most other places in the UK and it is felt the Island can play a significant role in shaping the national viewpoint.

Here we examine some of the key issues and invite you to contribute your views

THE DEMOGRAPHIC make-up of the Isle of Wight's population places it in the very vanguard of the national debate on the care of older people.

With a rising elderly population, the twin issues of the quality of care we provide and how this care is funded is increasingly brought into sharper focus.

"This is an issue that affects all of us, either as council tax payers, as recipients of care, or as someone who simply wants the best for elderly friends or relatives," said the council's director of community services, Sarah Mitchell.

"We believe the Island should be shaping the national debate, not least because our elderly population is growing faster than almost anywhere else in the UK."

As part of the debate, on 11 December a major conference is being staged at Cowes to discuss the future care needs of people on the Island – and how this care should be financed.

Delegates from groups, organisations and agencies with an interest

in social care will be invited to attend and air their views, as will those currently receiving care – and indeed those who may receive care in the future.

A major consultation exercise is planned and will be undertaken by the council in partnership with the voluntary sector and the University of Southampton.

This survey will be the largest and most comprehensive of its kind ever undertaken on the Island. The purpose will be to gather views both on the nature of care that should be provided in the future and how that care should be funded.

The information gathered from both exercises will feed into the national picture and also help decision-making on the Island.

Sarah Mitchell said: "Already much work has been undertaken to ensure the care provided on the Island is of high quality, meets the requirements of the recipients and is also provided in the most efficient manner.

"This is also the ethos of a national Transforming Social Care







agenda, under which it will be necessary for all councils to provide comprehensive arrangements for care, working across many services such as housing, benefits, leisure, transport and health – and with partners from private, voluntary and community organisations.”

Underpinning the national agenda will be a requirement to provide care that is both tailored to, and chosen by, recipients of care to meet their individual needs – called the personalisation of public services.

Recently, the council’s cabinet agreed to press ahead with delivering the Transforming Social Care agenda and also approved a structure comprising members of all the various interest groups responsible for delivering it.

Within the national framework the council is also able to introduce innovative measures of its own.

One example of this is the free homecare scheme for over 80s, currently enjoyed by more than 1,000 residents. The idea of this pioneering project was that providing care in this manner would help people to stay in their own homes for longer.

The scheme has led to a 41 per cent reduction in residential care placements and a 28 per cent increase in those receiving care in their own homes. It has also generated a £1.4 million saving in the residential care budget and as a result has provided £1.2 million investment in domiciliary care.

Sarah Mitchell added: “Spending on care remains substantial. The council spends more than £30 million a year on social care – everything from residential and nursing care to resource centres and day care – but we have a population that is living longer and so the figure is likely to rise. This is why we need to constantly review the way care is delivered – and to help us do that, we want to know what you think?”

## Having your say

To contribute your views to the national debate, please visit [www.careandsupport.direct.gov.uk](http://www.careandsupport.direct.gov.uk)





# Thousands of walkers celebrate festival

Autumnal event marks ten years of walking festivals



PICTURED: Walkers 'wear it pink' for Breast Cancer Awareness Month

**M**ORE THAN 2,000 walkers helped celebrate the Island's tenth anniversary walking festival at a special weekend event at the end of October.

The celebratory walking weekend featured 47 autumnal walks, and was arranged as a special extra event following the successful 16-day festival in May.

Many people who had taken part in May's event also donned their walking boots for the celebratory weekend, with an estimated half the walkers coming from the mainland, as well as some from Ireland and Jersey.

The walks include treasure hunts, wild food walks, ghost walks, twilight walks, friendship walks as part of Breast Cancer Awareness Month, Nordic walking, and downland and forest walks. There were many families taking part as the event was held during half-term week.

One of the highlights of the weekend

was An Evening with Alan Hinkes – the only Briton to climb all the world's highest mountains.

The celebratory weekend was sponsored by the council, the Ordnance Survey, Red Funnel, Wightlink and Millets.

The council is now looking at the October walking weekend becoming a permanent fixture in the Island's events calendar. Feedback from the walkers revealed a significant demand for an autumn walking weekend.

The Island's walking festival has grown massively since the first event in 1999 which featured 39 walks and attracted 5,000 people. Now there are more than 300 walks and 24,500 people taking part each May. The festival, through its speed dating walks, has also led to three marriages.

Councillor George Brown, cabinet member for leisure, said: "The celebratory walking



weekend has proved extremely popular and we are very pleased it was such a success with both residents and visitors. As a council we are keen to promote healthy activities and events that extend the tourist season, and are delighted that this year's walking weekend has achieved both."



## Nature notes



'November's sky is chill and drear, November's leaf is red and sear', wrote Sir Walter Scott 200 years ago. November is often a dull grey month in terms of weather, but in most years it is the time when autumn colours are at their best, enhanced by the first frosts.

For several weeks now leaves have been drifting slowly to the ground, though if a gale sweeps in, they may be torn from the trees in a very short time, leaving a tracery of bare branches against the sky. These fallen leaves are the food supply for soil dwelling animals like worms, woodlice, and beetles, as well as for the fungi that appear at this time of year. The leaf mould produced enriches the soil and improves its texture. Underneath poplar trees you may find leaf 'skeletons' – the remains of the delicate network of woody veins that carried water through the leaf.

Leaf colours in woodlands vary from the greenish-yellow of ash and the deeper golden yellow of field maple to the rusty brown of oak and the richer red and orange shades of the wild service tree. Beech, with its glossy bronze autumn foliage, is not particularly common in Island woods but there are some fine specimens in Borthwood Copse and along the road between Calbourne and Brighstone Forest.

But what is the real botanical firework of November? Look in the hedgerows for the startling pink fruits of the spindle tree (*pictured*) which burst open to reveal bright orange seeds.

Anne Marston, assistant ecology officer

## Wight winter walks

If you are looking to explore the Island's countryside and coast with local experts as your guides, why not try one of the Wight winter walks?

Details of some of the walks are shown below, and you can also find out about them in a special leaflet produced by the council's parks and countryside section.

Leaflets are available from public libraries and tourist information centres or can be downloaded from [www.iwight.com/walks](http://www.iwight.com/walks)



### Outside art (Sunday 30 November, 10.30am)

A winter stroll round the Gift to Nature wetland walk, collecting items to bring back to the orchard to make natural decorations for a winter tree-dressing. **Leader:** Ian Boyd. **Tel:** 298098. **Meet:** Outside the water works on Longwood Lane, Sandown. **Cost:** Donation to Gift to Nature of £2 suggested.

### Wildlife warriors (Tuesday 2 December, 10am to 1pm)

Woodland management work at Mill Copse, near Yarmouth, on behalf of Wight Nature Fund. **Leader:** Countryside rangers. **Tel:** 823893. **Meet:** Entrance to Mill Copse, GR 358890.

### Rocks from rails: lumpy landscapes

(Wednesday 3 December, 10am)  
A walk of contrasts to view landscapes formed over millions of years, climbing classic chalk hills to Bembridge Down viewpoint, descending along the Red Cliff coastal path and returning by the River Yar. **Leader:** Helen Parry, Medina Valley Centre. **Tel:** 522195. **Meet:** Brading railway station. **Cost:** Donations appreciated.

### Brighstone Christmas Tree Festival

(Thursday 4 to Sunday 7 December, 10am to 5.30pm)

Come to see more than 100 Christmas trees decorated by various individuals and organisations. **Details:** From Chris Goodman, tel: 741166, or Sheila Collinge, tel: 740689.

**Meet:** Brighstone churches, Wilberforce Hall and Mottistone church. **Cost:** Donations appreciated.

### Shorwell slopes (Thursday 18 December, 10am)

A hilly walk in the downs around Shorwell. Bring a picnic lunch, three-and-a-half hours/ seven miles. **Leader:** Howard Duffus. **Tel:** 761252. **Meet:** Shorwell Village Hall car park, GR 457828.

### Appetiser for Christmas lunch (Saturday 20 December, 9.30am)

A few hills, or perhaps more than a few? For experienced walkers, 12 miles/five-and-a-half hours. Bring a picnic lunch. **Leader:** Mike Marchant. **Tel:** 761252. **Meet:** Wroxall car park, GR 522798.

### Advertisement

**Buy your family a new AGA Cooker**

**Better food, a warm kitchen and happy meal times**

**Why not drive in and see us ?**

**Also Bathrooms, Calor Gas and Heating and Plumbing Supplies**



**523041**

28 Daish Way Newport ( off the St Mary's Roundabout )



**It's our 40th birthday!**  
So there is 40% off selected items in our Bathroom Showrooms each month

## Seasonal guide to wildlife in the garden

Make a log pile in the garden by burying logs a few centimetres into the soil with the cut side downwards in a shady area. It will provide a habitat for a huge range of insects and other mini-beasts, and a hibernation place for toads, newts and slow-worms which will be useful allies in controlling garden pests next year.



## ACTIVITIES

### RNLI Christmas Coffee Morning

(3 December)  
A Continental Christmas coffee morning, to include a pastry and coffee, RNLI souvenirs and raffle, Royal Corinthian Yacht Club, Cowes, 10.30am to 12 noon.

### Book Fair

(27 December)  
Book, postcard and ephemera fair, Parish Centre, Town Lane, Newport, 10am to 3.30pm, admission 20p.

## CINEMA

### Fargo

(4 December)  
Coen brothers dark comedy, starring Frances McDormand and William H Macy, Quay Arts, Newport, 7.30pm, tickets £4.

## EXHIBITIONS

### Hot Air

(16 October – 1 December)  
A photographic exhibition inspired by inflated beach goods, images by Janice Thwaites and Tim Collard, Quay Arts, Newport.

### The Little White Duck

(15 November – 10 January)  
Animation created by Medina High School students, Learning Curve Gallery, Quay Arts, Newport.

### Dark City, Lonely Circus

(22 November – 10 January)  
Printmaking and animation projections by Thomas Hicks, Quay Arts, Newport.

### Timeless Interiors

(4 December – 12 January)  
Joanna Burton's paintings of intimate objects at stately homes, palaces, places of worship and modest dwellings, Quay Arts, Newport.

## MUSIC

### Lily Neil

(29 November)  
Leading American Celtic harp player in concert, St Mary's Church, Brading, 7.45pm, tickets £10, available from Brading Centre, Brading Post Office or Waterstones, Newport, all profits to St Mary's Church.

### Salvation Army Band and Songsters

(4 December)  
A musical evening, part of the annual Christmas Tree Festival (4 to 7 December), Methodist Church, Regent Street, Shanklin, 7.45pm, entrance free.

### O Duo

(6 December)  
Radio, tv and film performers O Duo (Oliver Cox, Owen Gunnell and Morgan Szymanski) in concert, for West Wight Arts Association, Memorial Hall, Freshwater, 7.30pm, for tickets tel: 752278 (within a fortnight of the event).

### Quimantu

(13 December)  
One of Britain's finest Latin American bands, mixing electro-acoustic violin and bass with traditional instruments, Quay Arts, Newport, 7pm, tickets £12/£11\*.

### Turn up and sing the Messiah

(16 December)  
All welcome to sing or join the audience at Newport Minster, doors and singers 7pm, audience 8pm, all surpluses to charity.

## TALKS

### Silchester: the archaeology of Britain's first town

(4 December)  
A talk to the Isle of Wight branch of the Historical Association by Professor Michael Fulford, University of Reading, at St John's Church Hall, Newport, 7.30pm, contact Terry Blunden, tel: 524410.



**Timeless Interiors - a collection of paintings of intimate objects by Joanna Burton, Quay Arts, Newport from 4 December to 12 January**

## THEATRE

### Babes in the Wood

(6, 11-14 December)  
Cowes Amateur Operatic and Dramatic Society presents a traditional pantomime at Trinity Theatre, Cowes, performances at 2.30pm (6 and 13 December), 5pm (14 December) and 7.30pm (11 and 12 December), tickets £5 and £6 from theatre box office (open daily from 28 November, not Sunday, 11am to 2pm), tel: 295229.

### Jack and the Beanstalk

(10 December)  
Traditional fun for all the family, Quay Arts, Newport, 6.30pm, tickets £7/£6\*.

### The Snow Queen

(10-13, 17-20 December)  
Musical adaptation of the Hans Christian Andersen fairy tale, Apollo Theatre, Newport, 7.30pm.

### The Twelve Days of Christmas

(11-14 December)  
A family pantomime with live music and singing, Ventnor

Winter Gardens, 7.30pm (except on 14 December, 2.30pm), tickets £6.50/£5.50, tel: box office on 857581 or visit [www.ventnorwintergardens.co.uk](http://www.ventnorwintergardens.co.uk)

### Ali Baba and the Forty Thieves

(17-20 December)  
Pantomime by the New Strolling Players, fun for all the family, Memorial Hall, Freshwater,

7.30pm and matinee at 2.30pm (20 December), tickets £5 adult, £2.50 children, family rate £12.50 (two adults, two children), box office tel: 752956.

\* Quay Arts box office, tel: 822490, [www.quayarts.org](http://www.quayarts.org)

## Trailers

These listings are provided free, as a public information service. Details must be submitted either by: **filling out this form, or emailing your details to [oneisland@iow.gov.uk](mailto:oneisland@iow.gov.uk)**

Please conform to the format shown. Entries are included at the editorial team's discretion.

**Deadline for the next issue: 2 December (19 December publication date).**

Title of event/activity:

Date:

Brief description:

Venue:

Time:

Contact name:

Telephone:

**Please return to:**

**Trailers, One Island, Publications Unit, County Hall, Newport, Isle of Wight PO30 1UD**

or email to [oneisland@iow.gov.uk](mailto:oneisland@iow.gov.uk) no later than 2 December