

oneIsland

Your magazine from the
Isle of Wight Council
Issue eighteen
August/September 2008
www.iwight.com

Celebrating our magnificent trees

New Histree Trails
are launched

Also inside: Residents' Survey 2008
One Million Blooms





Welcome to the August/September issue of the council's magazine, which this month brings you information from our annual residents' survey. As with the previous two surveys, we will analyse and use the findings to help deliver the services and initiatives which you tell us you would like to see.

The survey findings play an important role in shaping the work we carry out on your behalf, through our One Island programme of improvements and in line with the Eco Island vision we are developing with our partners.

Also in this edition we bring you an update on the ambitious One School Pathfinder scheme, which will be bringing a modern new community learning centre to the Cowes High School site. This promises to be a project which showcases many ideas at the forefront of the Eco Island vision.

Over the past two years, many of you will have noticed the community planting schemes across the Island which form part of our One Million Blooms project. We hope improvements such as these and our other One Island schemes, including the new eco toilets and £5 million highway maintenance programme, are making positive strides towards the quality of life enjoyed by both residents and visitors.

**Councillor David Pugh,
Leader of the Isle of Wight
Council**

One Island is published ten times a year, each month except for September and January – these editions are combined with those of the previous month. If you have community news to share with other readers or would like to advertise in *One Island*, we would like to hear from you.

We also welcome your letters – you can contact us by post, email or telephone.

Post One Island, Communications, County Hall, Newport
PO30 1UD
Email Onelsland@iow.gov.uk
Telephone 823105

makingcontact

USEFUL CONTACTS

Isle of Wight Council, County Hall,
Newport PO30 1UD

Fax 823333

Email customer.services@iow.gov.uk

Website www.iwight.com

TELEPHONE SERVICES

Call centre 821000

Mon to Fri: 8am to 6pm

Saturday: 9am to 1pm

For telephone assistance we recommend you contact the call centre directly where we aim to answer as many enquiries as possible at this first point of contact.

Popular numbers

Automated telephone payments	559310
Council tax	823901
Education	823455
Environmental health	823000
Housing benefits	823950
Libraries	203880
Licensing	823159
Planning	823552
Refuse collection	823777
Roads and highways	823777
Tourism	813813/813818
Trading standards	823396
Consumer Direct	08454 040506
Leisure services	823828
Wightbus	823782
Dial-a-bus	826666/522226

Adult and children's services

Adult services	823340
Children's services	525790
Local centres:	
Cowes	291144
Newport	823340
Ryde	566011
Sandown	408448
Headquarters	520600
Housing	823040

EMERGENCY NUMBERS

In an emergency dial 999

Fire and rescue control centre (24hrs)	525121
Out of hours:	
Highways	525121
Waste disposal	0800 3283851
Wightcare	821105

A comprehensive listing of all the council's services and contact numbers can be found in our A to Z booklet. It is designed to make it easier for residents to access all our services, across every council directorate, from abandoned vehicles to the youth service.



FACE TO FACE SERVICES

Newport Help Centre

Tel 821000

County Hall, Newport PO30 1UD

Mon to Fri: 8am to 6pm

Sat: 9am to 1pm

Ryde Help Centre

Tel 812678

Ryde Library, 101 George Street, Ryde
PO33 2JE

Mon to Fri: 9am to 5pm

Brading Help Centre

Tel 401770

West Street, Brading PO36 0DR

Mon and Fri: 9am to 12 noon, Tues,
Wed, Thur: 9am to 4.30pm

Shanklin Help Centre

Falcon Cross Hall, Falcon Road, Shanklin
Mon only: 10am to 4pm

West Wight Information Centre

Tel 756140

Freshwater Library, School Green Road,
Freshwater PO40 9AP

Mon: 9am to 5.15pm,

Tues and Wed: 9.30am to 5.15pm, Thur:
(closed), Fri: 9.30am to 4.45pm. Closed for
lunch (1pm to 2pm each day)

Wootton Bridge Centre

Tel 884361

Joanne's Walk, Brannon Way,
Wootton Bridge PO33 4NU

IW Council desk – Mon, Tues,
Thurs, Fri: 9.15am to 1pm

Cowes Help Centre

Beckford Court, Beckford Road, Cowes
Fri (mornings): 9am to 12 noon



councilmeetings

Unless otherwise stated, all meetings are in public at County Hall. Call 823200 24-hours before a meeting to ensure it is going ahead and to check if any items are likely to be held in private session.

Council

(council chamber)

17 September (6pm)

15 October (6pm)

Cabinet

(committee room one)

9 September (6pm)

21 October (6pm)

Audit Committee

(committee room one)

16 September (6pm)

Planning Committee

(council chamber)

26 August (4pm)

23 September (4pm)

Licensing Sub-committee

(committee room one)

8 September (4pm)

13 October (4pm)

Licensing (Determinations)

Sub-committee

(committee room one)

11 August (4pm)

Scrutiny Committee

(committee room one)

18 September (6pm)

Ethical Standards Committee

(committee room one)

15 September (6pm)

Policy Commission for Care, Health and Housing

(committee room one)

20 August (6pm)

1 October (6pm)

Policy Commission for Business and Infrastructure

(committee room one)

3 September (6pm)

8 October (6pm)

Policy Commission for Children and School Results

(committee room one)

10 September (6pm)

22 October (6pm)

Policy Commission for Safer Communities

(committee room one)

4 September (6pm)

16 October (6pm)

Island Strategic Partnership Board

(council chamber)

14 October (5pm)



In this issue

NEWS DESK

- 4-7** Council and community news

FEATURES

- 8** **Discover our magnificent trees**
Launch of Island Histree Trails
- 12** **Residents' Survey 2008**
The key findings
- 13** **A school for the future**
New community learning centre
- 14** **Bringing colour to the Island**
One Million Blooms, the next phase
- 18** **Travelling to school**
Top tips for your daily journey

REGULARS

- 19** **Coast and country**
Rural and coastal news
- 20** **Trailers**
Events and activities

Cover picture: Histree Trail project officer, Tina Williamson, views historic trees at Northwood Park, Cowes



ONE ISLAND is published by the Isle of Wight Council. The council does not accept responsibility for goods or services offered by advertisers. Additional copies are available from the Customer Service Centre at County Hall, libraries and other council facilities. Typetalk calls welcome.

Written, designed and produced by Corporate Communications, Isle of Wight Council.

ISSN 1752-8038

© COPYRIGHT 2008

Isle of Wight Council,
County Hall, Newport,
Isle of Wight PO30 1UD.
Printed on recycled paper by
Engage Group.



When you have finished with this magazine
please pass it on or recycle it

Islandimage



Kite flyer at Appley Beach: by Dick Moon

One Island is available on request as an audiotape, in large print, in Braille and in other languages.
For further details, please contact One Island on 823105. The magazine is also available online at www.iwight.com

£1.7 million boost for the West Wight

The council and the West Wight Landscape Partnership have secured £1.7 million from the Heritage Lottery Fund for conservation, heritage and regeneration projects in the West Wight.

The grant will be used to develop heritage walks for Islanders, introducing new paths and trails, information points and cultural exhibitions.

The projects are part of the West Wight Partnership's 'Learn, Enhance, Inspire and Connect' scheme.

Among the projects to receive funding will be The Golden Circuit, a flagship multi-use trail for walkers, cyclists, equestrians and mobility users linking important historical, environmental and cultural sites in the West Wight.

Starting and finishing in Yarmouth, The Golden Circuit will link existing footpaths and trails around the western tip of the Island to create a 9.3 kilometre long circuit taking users through some of the finest landscapes in the West Wight.

The scheme also includes a grant fund of £300,000 for landowners to access so they can improve landscape character and encourage biodiversity.

Other projects include exhibitions of historical artefacts found on the Island and the revival of traditional building and countryside management techniques.

Thirty-five hectares of new heathland will also be created through the scheme.

Sue Poston, chairman of the West Wight Landscape Partnership, said: "We are thrilled at the success of obtaining the grant and as a group look forward to doing all we can to ensure the success of this lottery award and raising the profile of the West Wight, both in terms of tourism and economic development."



The White Air Extreme Sports Festival at Yaverland – Europe's premier extreme multi-sports event – is taking place for the 12th year, from 19 to 21 September.

There will be 25 different sports, European and UK Championships on and off the water, as well as music from a live stage (with the Pigeon Detectives), parties at the beach bar, and Radio One's Rob Da Bank.

The European Thundercat Powerboat Championships will be the headline attraction this year, alongside the UK Windsurfing Freestyle Championships and the European Mountain Board Freestyle Championships.

There will also be skate professionals on the new mini ramp and street course, Flatland BMX, FMX Freestyle, UK Championships Stand Up Paddle board, kitesurfing, wakeboarding, surfing and many other sports.

The Red Arrows will provide displays on Saturday and Sunday mornings, and Red Arrows' flight simulators will be on site at the main White Air village.

The RAF Falcons parachute display team will be dropping in to open the festival on Friday 19 September.

For more information about the festival, including tickets, visit www.whiteair.co.uk



Steve is new chief executive

The council has appointed its director of children's services, Steve Beynon, as its new chief executive.

Mr Beynon, 55, took up his new post at the end of July, replacing interim chief executive David Burbage, who had stood in since the departure of Joe Duckworth earlier in the summer.

Council leader, Councillor David Pugh, said the appointment was an endorsement of the work Mr Beynon had delivered in children's services and

also of his ideas for the future.

"The quality of candidates interviewed was extremely high. It is a great credit to Steve, his track record and his ideas for the future that he was successful."

Mr Beynon has spent 32 years in the public sector, including periods as a teacher, head teacher and director of children's services with other councils. He joined the Isle of Wight Council in 2006.



A new strategy for tackling homelessness on the Island over the coming five years has been endorsed by the council.

The Homeless Strategy 2008 to 2013 sets out key housing-related priorities and details how the council will meet these needs.

Targets in the document include the annual provision of 163 new affordable homes this year and a commitment to bringing into use 100 empty properties this year.

The strategy also involves closer working with private sector landlords and developers – to cut the number of people in temporary accommodation and to address the estimated annual shortfall in affordable units of 1,595.

To help prevent people losing their homes – particularly in the current uncertain economic climate – the strategy also aims to create a court desk which would give advice to people in danger of losing their homes. The council's debt advice will also be bolstered.

Councillor Dawn Cousins, cabinet member for health, housing and wellbeing, said: "Much work has been undertaken to identify areas in most need of attention and I am confident these practical and effective measures will make a real difference."

An example of recent success in bringing down homelessness has been the drop in the number of families being accepted as homeless from around 300 three years ago to last year's level of 140.

Maintenance at The Heights swimming pools



Essential maintenance work is to be carried out on the two pools at The Heights Leisure Centre in Sandown next month. It means swimming will not be available for a two week period from 1 to 14 September.

Maintenance work may be completed before the end of the two weeks, allowing the facilities to be reopened earlier.

Leisure centre staff have notified regular users and signs are being displayed advising of the closure.

The Heights other facilities, including the Tone Zone, Health Suite and squash courts, will remain open as normal during the maintenance period.

If you have any queries regarding the closure of the pool, please contact The Heights on 405594.

Green Flag for Appley Park



Seafront Appley Park at Ryde has become the first public space on the Island to be awarded a Green Flag by the Civic Trust.

The accolade is the land-based equivalent of the Blue Flag awarded for beach quality.

To win a Green Flag, open spaces must meet tough criteria – including good and safe access, clear signage, being clean and well maintained, having access to public amenities such as drinking water and toilets, and regular promotion of the area. Good community involvement is also a key factor.

The Green Flag scheme was first set up by the Civic Trust in 1996 as a national standard for Green spaces in England and Wales, and is recognised as being the benchmark for excellence in recreational green areas.

Council cabinet member for environment and transport, Councillor Tim Hunter-Henderson, said: "This is great news for the Isle of Wight. The council works very hard to ensure our parks and beaches are safe, clear of litter and well maintained for users."

- Appley Park was landscaped by Humphrey Repton in 1798, with many of the original features surviving to provide the site with an interesting and historic perspective.

Mural brightens up Cowes site

The façade of the former Three Crowns pub in Cowes High Street has been given a vibrant makeover thanks to a community project.

The frontage has been covered by a bright new mural showing a historical depiction of the town and some of its famous landmarks.

The idea arose following discussion

between Cowes mayor Geoff Banks, Cowes Business Association chairman Rod Ainge and Grahame Deacon, the council's Cowes town centre manager.

Funding was provided by Cowes Town Council, Cowes Business Association and the council's Safer Neighbourhoods Service, and AS and A2 students from Cowes High School designed and created the mural.

Grahame Deacon said: "If and when development work starts on the Three Crowns then the mural can be moved and re-used elsewhere. In this way it will be around brightening up the town for years to come."

Two new sections on [iwight.com](http://www.iwight.com)

Two council services – the Newport-based drug action team and the sports unit – have been working hard in recent months to develop new sections on [iwight.com](http://www.iwight.com)

The drug action team is responsible for the treatment part of the Island's drug strategy, which seeks to cut drug related violence and crime.

Its new web pages contain details about the Alcohol Advisory Service, the Drug Intervention Programme and Get Sorted – a service for young people and their families/carers affected by substance misuse.

Through its work, the team aims to: reduce and prevent the use of illegal drugs and alcohol; minimise the harm they cause; treat and rehabilitate users; cut related offending and crime; and make a significant contribution to community well being.

The sports unit works with partners to implement objectives for sport and physical activity on the Island. Its new contribution to [iwight.com](http://www.iwight.com) includes a directory of Island sports clubs and also provides information on funding and how to get involved in coaching and officiating. The site also lists many sporting events.

Visit www.iwight.com to find out more.

Ceremony marks citizenship



The number of people who have become British citizens at special ceremonies on the Island, since the initiative was introduced by the government in 2004, is now over the 200 mark.

In July a group of people were welcomed at a ceremony at

Northwood House, Cowes, following acceptance of their applications by the Home Office.

Diana Beckley from Russia, who now lives in Sandown, and Betty Idicula and her two children from India, who live in Newport, were welcomed by the chairman of the council, the Island's Lord Lieutenant and the Island's High Sheriff on behalf of the Queen and the judiciary (*pictured left*).

New citizens are encouraged to invite family and friends to attend the ceremony to celebrate the occasion. The ceremony lasts around 30 minutes, during which the group swears or affirms an oath of allegiance to the Crown and promises and pledges to uphold the values and laws of the UK and fulfil their duties and obligations as British citizens.

The chairman of the council presented the new citizens with certificates of naturalisation before they were invited to sign an Isle of Wight Register of Citizenship.

Diana Beckley came to the UK from Russia six years ago to work on the Island, where she met her husband. They married a year-and-a-half ago and now live in Sandown. Betty Idicula and her two children came to the Island five years ago from India and settled in Newport.

Remember to register to vote!

Island residents are being reminded to look out for special electoral registration forms arriving at their homes from later this month.

From the third week in August, canvass forms that are used to compile the annual Register of Electors will start arriving on the doormats of all 68,403 residential properties on the Island.

The forms allow people to amend, if necessary, the names of those registered as electors at the address – and the changes will be reflected in the new register when it is published on the 1 December 2008.

Even if there have been no changes to the people living in your household, it is vital the form is returned. It is a legal requirement to supply the information requested, and if the form is not returned your name could be removed from the register and you will not be able to vote.

In May 2009 there are due to be elections to the Isle of Wight Council (using the 40 new wards, if approved by the Electoral Commission) and all but four parish and town councils – along with the European Parliamentary elections in June. There is also the chance of a General Election being called at some point, possibly at short notice.

Increasingly, the Register of Electors is used to check people's identity when they apply for credit, and if you are not registered at the address you give on your loan application, you may be refused credit, or find it more difficult to obtain.

You also now have a choice about whether or not your name and address is sold to commercial organisations (or indeed to any person who may wish to buy a copy of the register). This choice was introduced in 2002, and if you wish your details to be excluded from the Edited Register – as the commercially available register is known – then you need to tick the relevant column on the form.

Everyone's name must appear on the Full Register, but this is only used by certain statutory bodies and organisations, and they are not allowed by law to pass the details on to any other parties. Anyone may inspect the Full Register in person at Customer Services, County Hall, Newport.

The canvass form also allows you to request an application form to vote by post.

If your household has not received a canvass form by early September, then please telephone the electoral services office at the Isle of Wight Council on 821000.

Mini Island Games are big success

PICTURED: School sports co-ordinator, Dan Givens, presents the trophy to St Helena



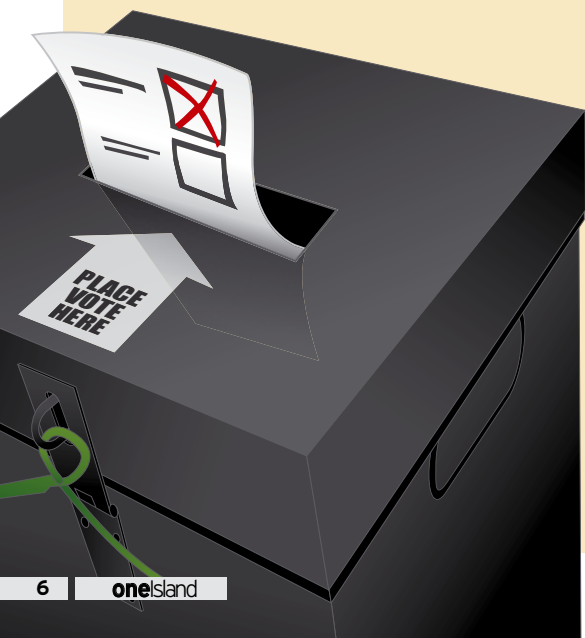
More than 300 primary school pupils recently experienced what it is like to take part in a mini Island Games and Olympic style event.

Thirty six primary schools from across the Island took part in the event at Sandown High School, forming six teams.

The schools competed under the names of teams which take part in the senior Island Games, such as the Cayman Islands, Greenland, Gibraltar, Menorca, Rhodes and St Helena.

The games started with a formal opening ceremony, and were supported by more than 100 volunteers and helpers. Events included tennis, basketball and athletics.

Lee Matthews, community development manager, said: "A huge thank you must go to all the schools who provided the teams and the helpers and volunteers who worked so hard on the day to make the games so special. This will be an annual event, and the council, along with dozens of primary schools, is already looking forward to next year."



School governors



People from a wide variety of backgrounds are being encouraged to consider becoming a school governor.

The council is to introduce special taster sessions in the autumn for prospective governors – and is hoping to attract wider interest than is currently the case from local communities and business.

The taster sessions will provide an insight into the role, and an opportunity to talk to current governors about their responsibilities.

An improved training and development programme is being developed to retain and strengthen the existing governor workforce.

If you would like more information on becoming a school governor, please contact Kirstie Rann, tel: 533523 or email kirstie.rann@iow.gov.uk



Improve your motorcycling safety skills

Island motorcyclists are being encouraged to enrol in better riding courses to improve their skills and safety on the road.

The courses are run by road safety experts and comprise two sessions based on the Police Rider's Handbook.

One session deals with the system of control and observation, and the other with cornering and overtaking. The second session also includes basic first aid instruction on what to do if first on the scene of an accident.

The course includes an assessment ride conducted by highly advanced motorcyclists. The cost of the course is £10 per person.

The next course is scheduled for Tuesday 12 August (7.30pm to 9.30pm) and Tuesday 19 August (7.30pm to 9.30pm). To enrol, you should write to: Mervyn Goldring, Road Safety Officer, Enterprise House, St Cross Business Park, Newport Isle of Wight PO30 5WB, email: mervyn.goldring@iow.gov.uk, or tel: 823799.

In 2006, 599 motorcyclists died and 5,885 were seriously injured in road accidents nationally.

Motorcyclists are just one per cent of total road traffic, but account for 19 per cent of all road user deaths in Britain.

The five most common factors in road accidents that involve injury to motorcyclists are: failure to look properly; loss of control; failure to judge the other person's path or speed; being careless, reckless or in a hurry; a poor turn or manoeuvre.

Around 25 per cent of motorcycle fatalities were crashes that did not involve another vehicle. Of the remaining 75 per cent, almost half involved a car driver looking but failing to see. (Source: *THINK! motorcycle strategy*)

August bank holiday refuse collection

Refuse normally collected on: Will be collected on:

Monday 25 August

Tuesday 26 August

Wednesday 27 August

Thursday 28 August

Friday 29 August

Tuesday 26 August

Wednesday 27 August

Thursday 28 August

Friday 29 August

Saturday 30 August

Recycling collections will also run one day late. Refuse and recycling collections will return to normal on Monday 1 September.

If you have any queries regarding refuse collection or recycling, please contact:

Isle of Wight Council, tel: 823777.

Island Waste Services, tel: 0800 3283851.

New club proves great success



A recently created club designed to promote healthy lifestyles among the young in the West Wight is already proving very popular.

More than 150 children aged eight to 12 are already taking part in activities with the West Wight Extended Schools (WAYS Forward) club.

The club attracts more than 90 children on a weekly basis to take part in activities including football, swimming, basketball, pool, badminton, table tennis, team building, circus skills and arts and crafts.

The emphasis is on giving young people ownership of the club and encouraging them to suggest ideas for activities.

The project has been organised with partners including the council, Hampshire Constabulary, Safer Neighbourhoods, Freshwater town centre manager and West Wight Sports Centre.

Police Sergeant Mark Lyth said: "The club has made an immense impact in the community by breaking down barriers between police and young people, who now see officers as friendly and approachable. There is an understanding that bad behaviour will not be accepted, not only by the police, but by young people themselves, who are proud to be part of the club."

Cabinet member for children and young people, Councillor Alan Wells, said: "This is a great club which has already made a great impact in a short time."

The sessions take place on Wednesday afternoons from 3.30pm to 6pm at West Wight Youth and Community Centre, Freshwater, and will continue throughout the school holidays.

If you would like more details about the club, please contact the project co-ordinator, Tracey Castle, on 752126, email: waysforwardiow@aol.com



Discover our magnificent trees

The Isle of Wight's most impressive
trees are being celebrated in an
exciting new series of trails...

FROM VENERABLE oaks to ancient and gnarled yews, the Isle of Wight has many historic and magnificent trees.

Following almost two years of surveying and recording, many of these trees are now part of eight special Histree Trails created through a Heritage Lottery-funded project.

The Histree Trails have resulted from much work with local communities, which have been involved in the identification, recording and surveying of the trees.

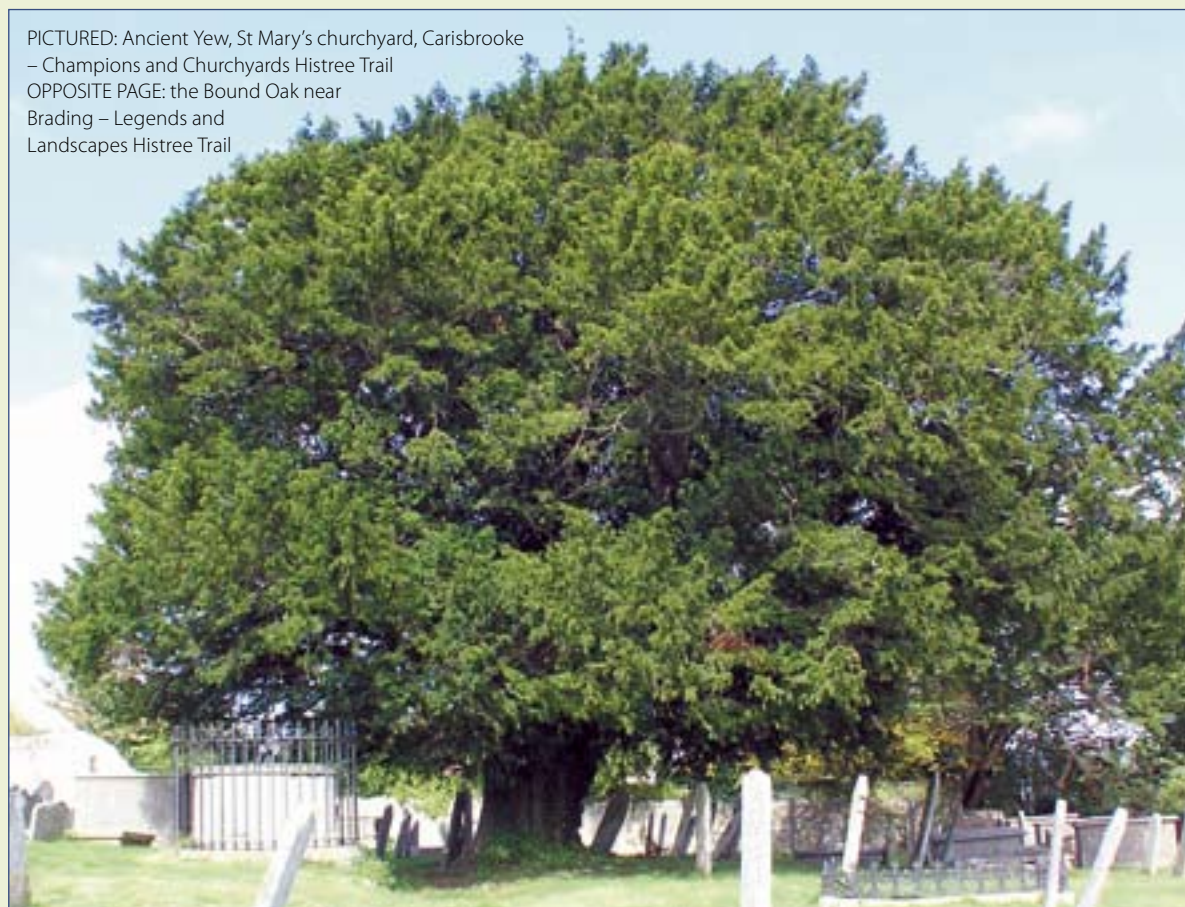
The trees being celebrated range from the dragon tree at Brighstone, with its wonderful snaking boughs, to the umbrella trees, with their cascading canopies at Cowes and East Cowes.

The trails take walkers on a tour of some the Island's grandest specimens. One trail even reveals a mysterious tree with a spooky past – for it is said that sometimes at dusk two ghostly schoolboys can be seen swinging and crying out from the broad branches of the oriental plane in Northwood Park, Cowes.

The trails help you find out how the trees relate to their local landscape, how they came to be where they are, their traditional uses, and their natural heritage.

The grand horse chestnut at Church Litten, Newport is said to be linked to the first ever

PICTURED: Ancient Yew, St Mary's churchyard, Carisbrooke
– Champions and Churchyards Histree Trail
OPPOSITE PAGE: the Bound Oak near Brading – Legends and Landscapes Histree Trail



recorded game of conkers, in 1848. Prior to this, the game did exist, but hazelnut shells and even snail shells were used.

The trails range in length and difficulty from a shorter town trail taking in street and park trees (the Parks and Parasols Histree Trail), to a circular rural route through ancient woodland (the Legends and Landscapes Histree Trail), to a challenging journey from the heart of the

Island to the south west coast (the Kings and Dragons Histree Trail).

Each trail is accompanied by a leaflet which includes a colourful map, a species identification key and trail text. To help guide walkers along the way, there are nest boxes constructed by local young people to waymark feature trees on each trail.

The Histree Trails are to be launched at Northwood Park, Cowes on Saturday 9 August, (10am to 1pm). There will be entertaining tree-related activities going on throughout

the morning, including storytelling, woodland crafts, tree decorating, giant drawings and tree-o-caching – where you can use GPS to find out more about the wonderful trees in Northwood Park.

The Histree Trail leaflets will be available from tourist information centres and the Island's public libraries and help centres from August.

For more information see www.histreetrail.com, where all eight trails will also be available as downloads, or call the council's parks and countryside section on 823893.

PICTURED: The locations of the eight Histree Trails
RIGHT: Histree Trail leaflets



Map artwork by Potting Shed Cartoons



Summer spoilers

We are well into the summer and it's a good time with friends and family. But watch out for those summer spoilers: booze, sunburn, and barbecues can affect the whole family and ruin a good time. Here are some suggestions you can do to ensure your summer is a great time for all the family.

Booze

Alcohol can get any party off with a swing, but too much can end the party on a bad note. Know your limits and have a sensible and sociable time.



Units:	
Ordinary strength bottled beer, ale and stout (3.5 to 4%)	1.3 units
Can cider (6%)	2.6 units
Bottle, larger (3.5 to 4%)	1.8 units
Alcopops (5%)	1.4 units
Wine, red or white 250ml (13%)	3.3 units

How much is too much?	
Men	Three to four units daily
Woman	Two to three units daily

Sunburn



Barbecues



Whatever you're cooking, keep food safe for friends and family with these food safety tips.

Cooking barbecued food properly

Always make sure you cook meat and meat products until they're piping hot all the way through, none of the meat is pink and any juices run clear. If you're barbecuing for lots of people,

you could cook meat indoors and finish it off on

the barbecue for added flavour. Also:

- make sure frozen food is properly thawed before you cook it;
- turn the food regularly, and move it around the barbecue, to cook it evenly. Don't assume that if meat is charred on the outside that it will be cooked properly on the inside.

Keep raw meat away from ready-to-eat food

This is called cross-contamination. You can prevent it by doing the following things:

- Always wash your hands thoroughly after handling raw meat.
- Use separate utensils for raw and cooked meat.
- Never put cooked food on a plate or surface that has been used for raw meat.
- Don't put raw meat products next to cooked meat on the barbecue.

Don't let those Summer spoilers ruin your holidays
Have a safe, fun and sunny summer

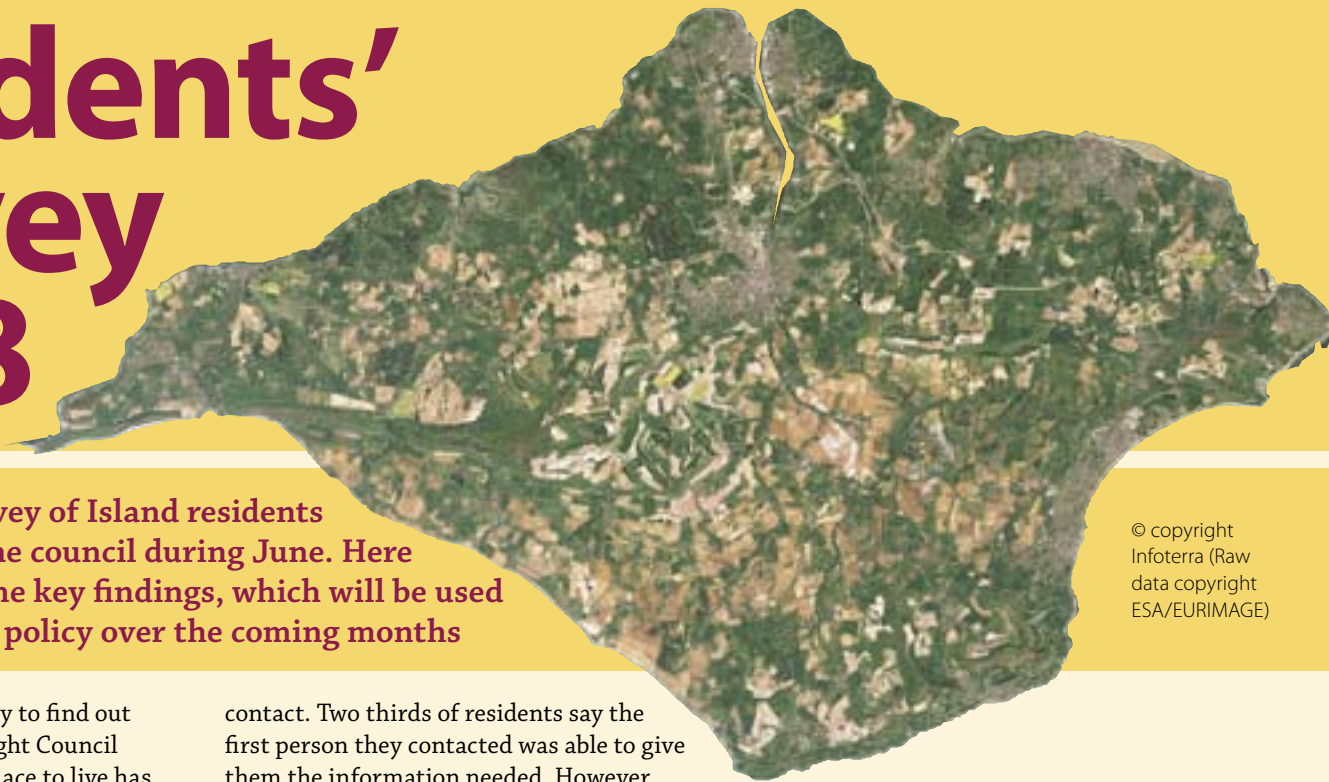
er and all want
 d family. But
 r spoilers –
 cues – as they
 and ruin a
 simple things
 summer is a

rn

Sunburn can double your risk of skin cancer and be very distressing and painful. Be sun smart and take care not to burn.

- Seek the shade between 11am and 3pm.
- Make sure you never burn.
- Cover up with a hat, t-shirt and sunglasses.
- Take extra care of children and keep babies out of the sun.
- Use a 15+ sunscreen and apply generously and often.

Residents' Survey 2008



© copyright
Infoterra (Raw
data copyright
ESA/EURIMAGE)

The third annual survey of Island residents was carried out for the council during June. Here we present some of the key findings, which will be used to help shape council policy over the coming months

THE LATEST annual survey to find out residents' views on Isle of Wight Council services and the Island as a place to live has revealed a nine per cent increase in satisfaction levels since 2007.

The survey involved 804 telephone interviews with residents aged 16 and over, carried out between 9 and 20 June.

Generally residents were found to be less pessimistic than in previous years about the future of their local area and the Isle of Wight as a whole.

Key areas identified as being of concern in relation to council services were road maintenance, parking and public toilets.

The Isle of Wight as a place to live

Opinion about the Island being a good place to live, work and have a holiday have remained consistent with previous results – but slightly fewer residents feel the Island is a good place to invest in (possibly due to the current economic downturn).

Opinion of the council

Satisfaction with the council has continued to significantly increase since 2006, rising ten per cent in 2007 and a further nine per cent in 2008 – to 63 per cent of those interviewed and expressing an opinion.

Contact with the council

The survey found that one in five residents has contacted the council at least once in the last two or three months. The top issues the council was contacted about were planning issues, council tax payments, road maintenance, rubbish collections and the recycling service. Telephone is the most popular method of

contact. Two thirds of residents say the first person they contacted was able to give them the information needed. However, satisfaction of handling of an enquiry has dropped by ten per cent and dissatisfaction is up by nine per cent since 2007.

Informed level

The level to which people felt informed regarding services and benefits has remained stable since 2007. However, the informed level in relation to plans for the future, how to get involved in local decision making, delivery of promises and performance have all decreased by around five per cent.

The council's value for money rating rose from 36 per cent in 2006 to 39 per cent in 2008, with improved communications found to be a factor in this.

Media coverage

Three in five residents read the Isle of Wight County Press every week and 56 per cent of those who read it think coverage of the council is fair.

Areas of concern

Road maintenance is a serious issue for a significant number of residents and although a third are aware of the council being awarded money to improve roads, two thirds are dissatisfied with road maintenance. Road maintenance is considered the most important service the council provides by two in five residents. However a major highway improvement plan – in advance of the £325 million PFI (Private Finance Initiative) money that will be available in 2011 – is currently underway to improve the state of Island roads.

Conclusions

The survey concluded that the increase in overall satisfaction levels is an important endorsement for the council in its efforts to obtain three star status and be regarded as an excellent council by national monitoring bodies.

The findings made it clear that a combination of factors are affecting the way residents feel about the council – and only comprehensive communications and service planning which make a real difference on the ground to residents will improve the council's reputation.

Council leader, Councillor David Pugh, said: "While we still recognise there are a number of areas in which the council needs to continue to improve, the increased levels of satisfaction are particularly pleasing and provide good evidence that we are moving in the right direction.

"It is also heartening that we already have plans in place to tackle many of the areas highlighted as concerns. We are spending £5 million on highway maintenance schemes this year, some of which are underway, and similar amounts in the years leading up to 2011 when the £325 million PFI money becomes available. We are also spending many millions on providing new eco-toilets across the Island.

"As this work continues, then we would hope the level of satisfaction with our services will continue to rise. For our part, it is down to us to make sure we continue to communicate the work we are doing to improve the lives of residents."

A school for the future

We take a look at the ambitious plans for a new community learning centre at Cowes High School...



PICTURED: Map showing the site of the existing school (in grey) and the proposed site of the new learning centre (in white)

INITIAL DESIGNS have been completed for the One School Pathfinder scheme – the multi million pound initiative to create a spectacular new community learning centre on the site of Cowes High School.

The new learning centre will be of an inspirational design that will revolutionise the way education – both academic and vocational – is delivered at Cowes.

The centre will utilise the very latest in sustainable building and energy-efficiency techniques to achieve a zero carbon footprint.

While offering the very best learning and recreational facilities for its students, the building will also host a wide range of community education and social functions.

Green features are likely to include solar power, wind power, ground heat and ground cooling, temperature and energy controlled building design, quality insulation and effective use of sustainable materials.

Its position to the west of the existing school will also maximise the use of natural light and provide inspirational views out across the Solent. The use of green technologies will form part of the learning process for students and become a beacon for the Eco Island vision.

Community facilities could include a business innovation/enterprise centre, conference facilities, family learning provision, homework and breakfast clubs, family support, a community café, the co-location of agencies supporting children and young people, a crèche, community meeting rooms and provision for voluntary organisations. There would also be an extensive playfield space and multi-use games area, available both to the school and community.

Councillor Alan Wells, cabinet member for children and young people, said the project would revolutionise the way school buildings were designed and utilised.

“The project will transform the existing Cowes High School into an exceptionally designed, inspiring 21st century learning environment.

“Our vision is that learners will leave Cowes Learning

Centre not only with good examination results to open the gates to employment or higher education, but also equipped to be well motivated, independent learners who will thus be able to secure economic wellbeing throughout their lives.”

The designs envisage a Cowes Campus College to be divided between two facilities – a 14 to 19 Cowes Learning Centre and a proposed ‘Gateway’ campus for 11 to 14 year-olds. The 14 to 19 element would be constructed first, with the ‘Gateway’ proposed to follow using some of the land freed up when the existing site transfers to the new building.

A major focal point would be an open plan and largely glass central inspiration area while the designs also allow for a lecture theatre and auditorium and performance space.

Cowes High head teacher David Snashall said the building would redefine people’s views of a school building and provide unique learning and teaching experiences. The bold design would be matched by a diverse curriculum.

“While these are very early thoughts on the design, it is clear that the intention is to create an environment that inspires learning, that incorporates cutting edge technology and that helps us to take the modern education and training agenda further.

“Students stand to benefit hugely from the university style campus approach, from the diverse range of courses on offer, the state-of-the art facilities and equipment and the personalised approach to learning that will be adopted.

“The wider Cowes community will also benefit from the flexibility that we are intending to bring into the learning environment which will enable us to provide lifelong learning opportunities as well as business support services.

“And because it will serve the community, the community itself has an important role to play in shaping the development of the new Cowes Learning Centre.”



Bringing colour to the Island

Looking ahead to the next phase of One Million Blooms...

THE SEARCH is on for the next collection of One Million Bloom projects on the Island.

The council is looking for community groups and town and parish councils to come up with ideas and locations for planting schemes.

One Million Blooms was launched last year as one of the council's One Island improvement projects, and has proved popular with residents and visitors.

As well as an array of smaller schemes there are three showpiece displays on St George's and St Mary's roundabouts at Newport and the Racecourse roundabout at Whippingham.

This year's planting will feature three centrepieces as well as smaller community schemes. It will take place in the autumn to ensure the blooms are at their best next spring. There will also be community involvement to help make sure the plantings are sustainable.

Also in the interests of sustainability, the favoured schemes will be drought tolerant to reduce the need for watering, and will be low maintenance.

The cost of the schemes will be from £250 to £2,500.

Details of how to apply will go to all town and parish council clerks. In the first instance, anyone interested in being involved with a scheme should go to their local town or parish council to see if they are already making a bid.

Direct applications from constituted groups other than town and parish councils will also be considered so long as the local council is supportive.

For further information contact: Matthew Chatfield, parks and countryside manager, tel: 821000.

MAIN PICTURE: The planting at Racecourse roundabout, Whippingham
RIGHT: St George's roundabout, Newport
FAR RIGHT: St Mary's roundabout, Newport



Policing the Isle of Wight



Hampshire
POLICE AUTHORITY
for Hampshire & the Isle of Wight

Hampshire Constabulary is responsible for policing Hampshire and Isle of Wight, and is accountable to the community it serves. Hampshire Police Authority is an independent organisation responsible for overseeing Hampshire Constabulary on behalf of the community. This is a summary of how the Constabulary has been tackling the priorities and dealing with issues where you live.

■ “In the past year, Police Authorities and Constabularies across the country have faced a number of challenges which we have risen to, but the real test is how crime is tackled at a local level. This information aims to show you how well the Constabulary is dealing with crime in your area and what it will be focusing on next year.”

Councillor Jacqui Rayment,
Chair, Hampshire Police Authority

■ “Hampshire Constabulary is a top performing force in terms of the number of people who think their local police do a good job. The past year has seen the force roll out Safer Neighbourhoods, with every neighbourhood in Hampshire and the Isle of Wight now having its own locally accountable police team. These teams work with communities and partners to develop long term solutions to the issues that communities tell them are important. Our priority remains to be a service which meets the needs of local communities and we cannot do this successfully without the continued support of our partners and the communities we serve.”

Paul Kernaghan QPM CBE,
Chief Constable, Hampshire Constabulary.

If you would like to get involved in the consultation we carry out within the community, find out more about the plans for the future, or read a full copy of the policing plan, please visit www.hampshirepoliceauthority.org or call us on 01962 871595.

Policing priorities

By continuing to put resources into neighbourhood policing, we aim to make Hampshire and the Isle of Wight safer places to live and work. By listening to the public and working with our partner organisations, we have targeted a number of issues which we will specifically focus on in the next three years, which can be divided into four key areas:

- **Safer Neighbourhoods** – working with communities to build and maintain neighbourhoods where people are safe and feel safe;
- **Safeguard People** – protecting the vulnerable by reducing the number of child abuse, domestic abuse and hate crime victims;
- **Protect Our Communities** – preventing, and planning for the effects of, terrorism, domestic extremism and major incidents;
- **Prevent, Reduce and Detect Crime** – targeting criminals and protecting victims.

Did you know?

■ There are now 3890 police officers and 2724 police staff across Hampshire and the Isle of Wight, working alongside 334 Police Community Support Officers (PCSOs) and partners in other agencies to make our communities safer.*

■ Safer Neighbourhood Teams are now in place across Hampshire and the Isle of Wight. Safer Neighbourhoods is not solely about policing – we believe the best way to achieve neighbourhood improvements for the community, police and partners, such as local authority, health and fire services, is to all work together.

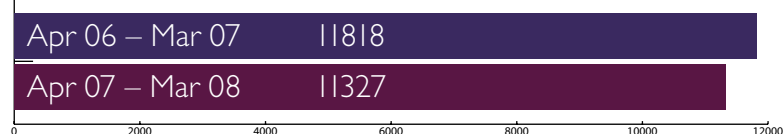
*As at 30 June 2008 .

The cost of policing Hampshire and the Isle of Wight: The expenditure of the Hampshire Police Authority for 2007/8 was £284.3m. The audit opinion will be made available in September and will be published on our website: www.hampshirepoliceauthority.org. If you do not have access to the internet, please contact Hampshire Police Authority on 01962 871595 for a hard copy. You can find details of how the police use their budget on www.hampshire.police.uk.

How are the police performing where you live?

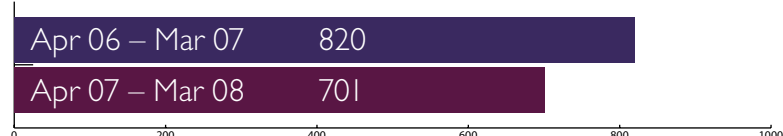
Isle of Wight

Number of crimes



This shows a reduction of 4.1% in the number of crimes reported on the Isle of Wight, compared to a reduction across the Hampshire Constabulary area of 8.8%

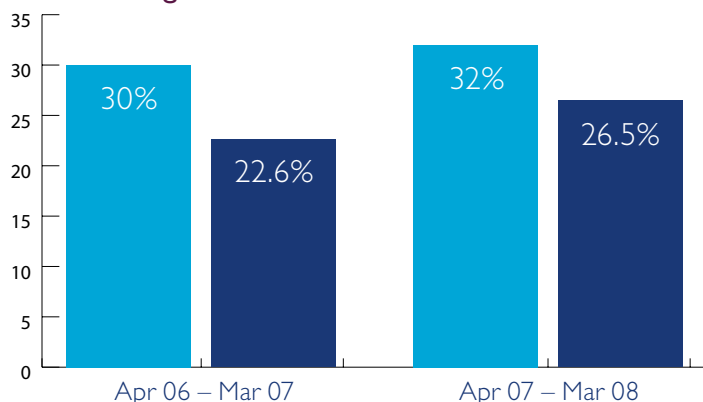
Number of vehicle crimes



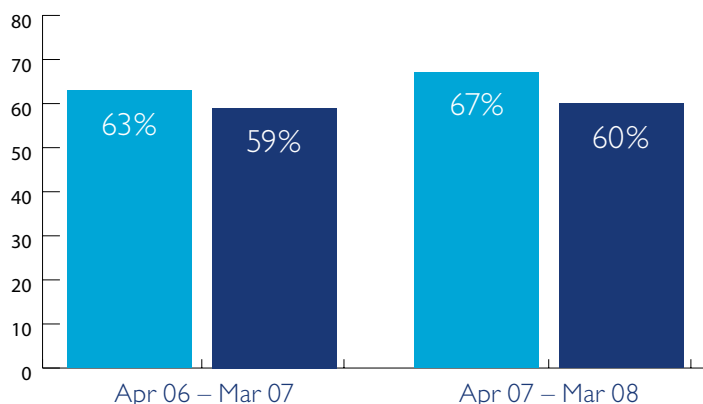
This shows a reduction of 14.5% in the number of vehicles crimes reported on the Isle of Wight, compared to a reduction across the Hampshire Constabulary area of 18.5%

Key: ■ Isle of Wight ■ Force Wide

Percentage of crimes detected



Citizen's satisfaction with overall service



Local contacts

■ If personal safety is under threat, always dial 999. To contact the police for non-emergencies, dial 0845 0454545. For advice and action on safety and anti-social behaviour issues, dial 101.

Crimestoppers	0800 555 111
Victim Support Line	0845 30 90 900
National Domestic Violence Helpline	0800 2000 247
Isle of Wight Council	01983 821 000

■ “The Isle of Wight continues to be a very safe place in which to live and work. The multi-agency Partnership has worked extremely hard to make an impact on crime levels across the entire Island and has achieved some notable success, with significant reductions in vehicle crime and criminal damage.

The challenge for the forthcoming year will be to maintain this level of performance and drive down other types of crime, particularly those of violence and disorder associated with alcohol misuse. Whilst such incidents are comparatively low on the Island, I recognise that these offences can often have a disproportionate effect on people's lives and that of the wider community.

For this reason, the public can expect to see Police and Partnership initiatives to reduce alcohol harm and violence as well as highly visible police activity to deter crime and keep our community safe.”

Chief Superintendent Dave Thomas, Commander of the Isle of Wight Operational Command Unit.

Useful website addresses:

- www.hampshirepoliceauthority.org – for reports and information on the work of the HPA.
- www.hampshire.police.uk – for full contact details and opening times of every police station in Hampshire and the Isle of Wight.
- www.cjsonline.gov.uk – information on the Criminal Justice System.
- www.askthe.police.uk – answers to frequently asked questions about the police in England and Wales.

To find out what is happening in your area go to www.hampshire.police.uk or call 0845 045 45 45

Top tips on travelling to school

Pupils from Swanmore Middle School at Ryde have put together some useful hints on how to get to school. If you are starting a new school in September or are returning to your existing school, why not try out some of their suggestions...

1 Try out the route with your mates

Arrange to meet up with your friends in the holidays – some kids might be embarrassed if parents come to school with them on the first day of term.

2 Walk to get streetwise skills and keep fit and healthy

If you walk, you're more alert and will keep fit and healthy.

3 Get your brain active

If you use a car, bus or train then your brain will be asleep for lessons. Walking wakes you up and makes you more alert for the day.

4 Meet your friends and walk together

Walking with your mates can be great fun and gives you a good chance to chat.

5 Go out and find the safest side of the road to walk

Look for:

- push button crossings (pelicans);
- zebra crossings;
- lollipop people (road crossing patrols).

6 See how long it takes by bike

Cycling is just as fast as a car sometimes.

7 Look for bridleways for off road routes

Check out some cool off-road routes. (Where paths are marked 'public bridleway' it's ok to cycle.)

8 Get your bike ready during the summer hols

Check out lights, brakes, and tyres – bike shops could help.

9 Be safe and seen

Wear bright, hi viz funky clothing and make sure you wear a helmet when cycling!

10 Find the nearest bus stop and check the times

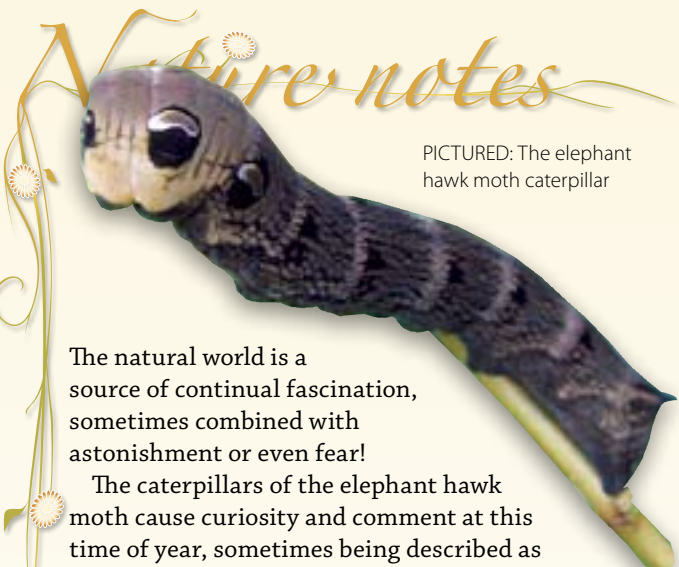
Also arrange to get your student rider card.

11 Park away from the school and find a meeting place so you can walk some of the way with friends

If you have to go in a car, share it with someone who is going the same way.

12 Save petrol money by walking or cycling

For more details on bus and train times visit www.islandbuses.info and www.island-line.co.uk



PICTURED: The elephant hawk moth caterpillar

The natural world is a source of continual fascination, sometimes combined with astonishment or even fear!

The caterpillars of the elephant hawk moth cause curiosity and comment at this time of year, sometimes being described as 'snake-like'! Usually brown but occasionally green in colour, they grow up to 8cm in length.

They have a brownish black patterning and kidney-shaped white-rimmed 'eye spots' just behind the head. When the caterpillar is disturbed, it pulls in its head segments, the front swells and the eye spots become more prominent. It sways from side to side, looking like a miniature elephant's trunk. This behaviour is the animal's defence mechanism, serving to startle and ward off predators.

At this stage in its life cycle, the animal's main activity is feeding on plants like willowherbs, bedstraws and fuschias to allow it to grow to full size. It turns into a pupa or chrysalis in late summer and remains in leaf litter or just below the soil surface until the following May or June, when it emerges as a moth.

This amazing transformation moves the animal on to life in a different dimension, to fulfil a role as a pollinator of flowers such as honeysuckle.

Elephant hawk moths have a 7cm wing-span and a striking olive green and shocking pink coloration, but as they generally fly at night, they are not often seen. They live only a matter of weeks; during this time they mate and lay eggs that hatch into caterpillars and so carry on the life cycle.

Anne Marston, assistant ecology officer

Tackling the yellow ragwort peril



PICTURED: Green Gym volunteers

Countryside rangers were joined by 20 volunteers early in July to help tackle the nuisance of common ragwort.

The council rangers teamed up with volunteers from the Green Gym initiative to clear ragwort on Brading Down. Green Gym is an independent community group that encourages people to keep fit by working on environmentally-friendly exercises.

Removing ragwort – a yellow plant that can be poisonous to grazing livestock, especially horses – is labour intensive and can involve digging the plant right out of the ground, including its roots.

The council works in line with the government's national code

of practice on preventing the spread of ragwort, a practice it has followed for several years. Although not illegal to have ragwort growing on your land, the government can take legal action to control it if it is found to be spreading onto agricultural land.

The council takes responsibility for ragwort on its own land and urges other land users to do the same.

Matthew Chatfield, parks and countryside manager, said: "Ragwort control is hard work, but it is something the council takes very seriously. We can't get rid of every plant but we do prioritise areas where grazing animals might be at risk, so for example, on Brading Down we have regular volunteer days to tackle the problem."

The Green Gym, which meets every Wednesday, is always looking for new people to join their team of volunteers. To find out more call 866459 or 822282.

Cut it back – keep it safe!

Landowners are being reminded that trees and hedges that overhang highways should be trimmed to safe levels.

Each year, thousands of pounds of damage is caused to vehicles by overhanging branches. If the branches from your tree or hedge causes the damage, you could be liable to pay the cost of repairing the damage. If a pedestrian is hurt, you may be liable for compensation.

Trees and hedges should be trimmed to ensure there is a clearance of 5.5 metres above roads and 2.4 metres

above pavements. The council also recommends that hedges overhanging the road should be cut back to 0.6 metres behind the edge of the highway.

If the council measures your tree and hedge branches and finds them to be over-length, it will send you a letter asking you to carry out trimming within 14 days. If it is not done, the council can do the work and legally recover the costs.

Anyone requiring more information on laws governing the cutting back of trees and hedges should contact the council's highways department on 823777.

Advertisement

Buy your family a new AGA Cooker

Better food, a warm kitchen and happy meal times

Why not drive in and see us ?

Also Bathrooms, Calor Gas and Heating and Plumbing Supplies



523041

28 Daish Way Newport (off the St Mary's Roundabout)



It's our 40th birthday!
So there is 40% off selected items in our Bathroom Showrooms each month

Seasonal guide to wildlife in the garden

If you have an apple tree, and space in your freezer, gather some windfalls and freeze them. Thrushes, blackbirds, blackcaps and other birds may be glad of them in the depths of winter when food is scarce.





The Jimi Hendrix tribute band, 'Are You Experienced?' will be performing at The Venue at Ryde Theatre, Ryde on 31 August

ACTIVITIES

Roman Voices Writing Competition

(8-23 August)
Friends of Brading Roman Villa competition closing date 23 August, with prizes for poems or short stories on the Island's Roman heritage, adults £3 per entry, children free, details and entry form at www.bragingromanvilla.org.uk

Histree Trails Launch

(9 August)
Launch of the Island's Histree Trails, celebrating historic trees, Northwood Park, Cowes, 10am to 1pm, tree-related activities, storytelling, woodland crafts, tree decorating, giant drawings.

St Agnes Centenary Flower Festival (9-12 August)
Flower festival in aid of St Agnes Church

centenary, all proceeds to the cost of re-thatching the church at Freshwater Bay, 10am to 4pm.

Nature Zones Wildlife Centre Open Days

(9, 12, 14, 21, 23, 28, 30 August)
Exploring wildlife habitats, woodland and meadow walks, guided tours, Birchmore Lane, Blackwater, 10.30am to 4.30pm.

Jigsaw Puzzle Festival

(11-16 August)
Hundreds of made-up jigsaw puzzles on display and for sale, St James Church, East Cowes, 10am to 4pm (Wednesday and Thursday evenings 6.30pm to 8.30pm).

Canine Partners Puppy Training Open Day

(13 August, 24 September)
Training puppies to become assistance dogs, Shorwell Village Hall, 10.30am to 12.30pm, contact Carol Court, tel: 07812 672702.

Telling Tales Storytelling Workshop

(19, 21 August)
Storytelling workshops

for eight to 14 year olds, Northwood WI Hall, 10.30am to 3pm, contact Sue Bailey, tel: 241095 or 07837 601315.

RNLI Summer Party

(25 August)
Dancing to the music of Chick Cole, Royal Yacht Squadron, 7pm to 9pm, price £10, for reservations contact Mrs S. Pengelly, tel: 281583.

Open Day at the Isle of Wight College

(27 August)
Enrol for courses starting in September, view the college and facilities, meet the staff, 4pm to 8pm.

Sandown-Shanklin and District Camera Club

(2, 9, 16, 23 September)
Club's weekly meeting at the sports pavilion, Watery Lane, Newchurch, 7.30pm, new members warmly welcomed, ssdcc.org.uk

Garden Party

(6 September)
To raise funds for Freshwater Independent Lifeboat, at St Winifred's, Cliff Road, Totland Bay, 2pm to 6pm, adults £1.50, children £1.

Festival of Flowers

(11-14 September)
At St Saviour's Church, Shanklin, 10am to 5pm and 2pm to 5pm on Sunday, 8pm evening concerts, food available.

EXHIBITIONS

Marine Art Exhibition

(1-31 August)
Open art exhibition at Kirkwood Art Studio, Tuxedo, New Road, Wootton, 10am to 4pm.

Outdoor Arts and Crafts

(13 August)
Outdoor arts and crafts on the lawn to buy, see and enjoy, Freshwater Library, 10am to 4pm.

Art Exhibition

(16-17 August)
Paintings by Paul Hewson at Newtown Church of the Holy Spirit, 10am to 5pm, admission free, refreshments, proceeds for the Bell

Tower Fund.

Isle of Wight Art Club

(17-28 August)
Summer exhibition at Newtown Old Town Hall, open 2am to 5pm, Sundays to Thursdays.

Island Art Society

(21-25 August)
Exhibition and sale of members' paintings, Masonic Hall, Fairy Road, Seaview, 10am to 6pm.

Art on the Turf Walk

(23 August)
Outdoor arts and craft market and exhibition of work by Island artists, Turf Walk, Totland, 10am to 4pm.

The Andrew (Paddy) Kerr Painting Group

(23-29 August)
Exhibition at Ventnor Botanic Garden (Echium Room), 10am to 5pm, all pictures for sale.

St Lawrence Art Society's Summer Exhibition

(29 August - 5 September)
Paintings in all media, the Echium Terrace, Ventnor Botanic Garden, 10am to 5pm.

The Barbara Newman Painting Group

(11-17 September)
Exhibition at Sts Thomas Church, Newport, 10am to 4pm, all pictures for sale.

MUSIC

Homemade

(23 August)
Presented by Vaguely Sunny with the Julia Margaret Cameron Trust, featuring Santa Spirita, Paul Armfield, The Redbirds, Spike Oatley and DJs, at Dimbola Lodge, Freshwater Bay, doors open 7pm, tickets £5 from Dimbola Lodge, tel: 756814, advance booking advised.

Jimi Hendrix Tribute Band, Are You Experienced?

(31 August)
Anniversary gig celebrating Hendrix Isle of Wight performance in 1970, at The Venue at Ryde Theatre, supported by The Sharks, Kinks

tribute Kinda Kinky, tickets £10 in advance from the theatre, tel: 568099, online at www.rydetheatre.co.uk

SHOWS

Freshwater Horticultural Society Annual Summer Show

(9 August)
The 115th summer show, Memorial Hall, Freshwater, 2pm to 4.30pm, show includes fruit, veg flowers, cookery, handicrafts.

Autumn Show

(11 October)
Brighstone and District Horticultural Society autumn show, Wilberforce Hall, Brighstone, 1.30pm to 4pm.

SPORT

Cricket: Ventnor v. Lashings World XI

(10 August)
Test cricket stars line-up in a team captained by former West Indies batsman Richie Richardson, at Ventnor Cricket Club, Steephill Road, Ventnor, 2.30pm.

Ryde Rowing Club Regatta

(16 August)
Annual regatta over course from Appley Beach to Ryde Pier, at Ryde Rowing Club, Appley Park, 10am to 3.30pm.

THEATRE

The Secret Lives of Henry and Alice

(2, 9, 16, 23, 30 August)
Two's Company present a comedy by David Tristram, Shanklin Theatre, 8.15pm, tickets £10, contact theatre box office, tel: 868000.

Bonaventure

(9-11 September)
Trinity Theatre, Cowes presents the drama by Charlotte Hastings, at St Mary's Church, Cowes, 7.30pm, tickets £5 and £6 from theatre box office (open 11am to 2pm daily, not Sunday, from 29 August), tel: 295229.

Trailers

These listings are provided free, as a public information service. Details must be submitted either by: **filling out this form, or emailing your details to oneisland@iow.gov.uk**

Please conform to the format shown. Entries are included at the editorial team's discretion.

Deadline for the next issue: 15 September (10 October publication date).

Title of event/activity:

Date:

Brief description:

Venue:

Time:

Contact name:

Telephone:

Please return to:

Trailers, One Island, Publications Unit, County Hall, Newport, Isle of Wight PO30 1UD

or email to oneisland@iow.gov.uk no later than 15 September