

# oneIsland



Your magazine from the  
Isle of Wight Council

Issue three

March 2007

[www.iwight.com](http://www.iwight.com)

**BUDGET AND  
COUNCIL TAX  
SPECIAL**  
see inside

## The way ahead?

School plans latest

Also inside:

Special focus on Newport  
The future of the Island's ports



## Welcome



Welcome to the third issue of *One Island*, which features important information on your council tax and our spending plans for the year ahead.

Much is happening as we strive to deliver high quality value-for-money services, and in shaping these plans we have responded directly to the priorities you raised in our residents' survey and recent public consultations. These priorities have been embodied for the coming year in a series of actions called the One Island programme, focusing on the key themes you singled out – respect, pride and value (see pages 12 to 15).

Linked with our resolve to provide the best possible services is a recognition that we need to let you know more effectively what we are doing.

With this in mind the council's magazine will be published monthly.

As we go to press I am delighted to tell you we've just heard from the Audit Commission that the council is considered to be 'improving well'. We'll tell you more about this in the next edition. This great news confirms our commitment to improving services to Islanders.

However, we have much work to do on your behalf, and as ever remain determined to maintain the improvements and progress that you deserve.

**Councillor Andy Sutton**  
Leader, Isle of Wight Council

**One Island** (from April) will be published each month, except for August/September and December/January, which will have combined editions. If you have community news to share with other readers or would like to advertise in *One Island*, we would like to hear from you.

We also welcome your letters – you can contact us by post, email or telephone.

**Post** One Island, Publications, County Hall, Newport PO30 1UD

**Email** Onelsland@iow.gov.uk

**Telephone** 823105

## makingcontact

### USEFUL CONTACTS

Isle of Wight Council, County Hall,  
Newport PO30 1UD

**Fax** 823333

**Email** customer.services@iow.gov.uk

**Website** www.iwight.com

### TELEPHONE SERVICES

**Call centre** 821000

Mon to Fri: 8am to 6pm

Saturday: 9am to 1pm

For telephone assistance we recommend you contact the call centre directly where we aim to answer as many enquiries as possible at this first point of contact.

#### Popular numbers

Council tax	823901
Education	823455
Environmental health	823000
Housing benefits	823950
Libraries	203880
Licensing	823159
Planning	823552
Refuse collection	823777
Roads and highways	823777
Tourism	813818
Trading standards	823396
Leisure services	823828



### Adult and children's services

Adult services	823340
Children's services	525790
Local centres:	
Cowes	291144
Newport	823340
Ryde	566011
Sandown	408448
Headquarters	520600
Housing	823040

### EMERGENCY NUMBERS

#### In an emergency dial 999

Fire and rescue control centre (24hrs)	525121
Out of hours:	
Highways	525121
Waste disposal	0800 3283851
Wightcare	821105



### FACE TO FACE SERVICES

#### Newport Help Centre

**Tel** 821000

County Hall, Newport PO30 1UD

Mon to Fri: 8am to 6pm

Sat: 9am to 1pm

#### Ryde Help Centre

**Tel** 812678

188 High Street, Ryde PO33 2PN

Mon to Fri: 8.45am to 5pm

Sat: 9.30am to 12.30pm

#### Brading Help Centre

**Tel** 405873

West Street, Brading PO36 0DR

IW Council desk – Tues: 9am to 1pm

#### Shanklin Help Centre

Falcon Cross Hall, Falcon Road, Shanklin.

Mon only: 10am to 4.30pm

#### West Wight Information Centre

**Tel** 756140

Freshwater Library, School Green Road,

Freshwater PO40 9AP

Mon: 9am to 5.15pm,

Tues and Wed: 9.30am to 5.15pm, Thur:

(closed), Fri: 9.30am to 4.45pm

#### Wootton Bridge Centre

**Tel** 884361

Joanne's Walk, Brannon Way,

Wootton Bridge PO33 4NU

IW Council desk – Mon, Tues,

Thurs, Fri: 9am to 1pm

## councilmeetings

Unless otherwise stated, all meetings are in public at County Hall. Call 821000 24 hours before a meeting to ensure it is going ahead and to check if any items are likely to be held in private session.

#### Council (council chamber)

21 March (6pm)

18 April (6pm)

#### Cabinet

6 March (6pm, Ventnor Winter Gardens)

3 April (6pm, Downside Middle School, Newport)

1 May (6pm, Wroxall Community Centre)

#### Development Control

**Sub-Committee** (council chamber)

20 March (4pm)

24 April (4pm)

#### Licensing Sub-Committee

(committee room one)

12 March (4pm)

15 March (2pm)

16 April (4pm)



#### Audit and Performance Committee

(committee room one)

13 March (6pm)

10 April (6pm)

#### Regulatory Committee

(committee room one)

2 April (4pm)

#### Standards Committee

(committee room one)

19 March (6pm)

#### Scrutiny Committee

(committee room one)

22 March (6pm)

19 April (6pm)

#### Policy Commission for Economy, Tourism, Regeneration and Transport

(committee room one)

14 March (6pm)

4 April (6pm)

30 April (6pm)

#### Policy Commission for Care, Health and Housing

(committee room one)

28 March (6pm)

25 April (6pm)

#### Policy Commission for Children and School Results

(committee room one)

11 April (6pm)

2 May (6pm)

#### Policy Commission for Safer Communities

(committee room one)

15 March (6pm)

5 April (6pm)

3 May (6pm)



## NEWS DESK

- 4-11** Council and community news

## FEATURES

- 12** **Council budget 2007/2008** Spending plans and council tax
- 16** **The way ahead** School plans update
- 18** **Representing Newport** Special town focus
- 20** **The future of our ports** Tell us your views
- 24** **Scores on the doors** New food hygiene scheme
- 26** **What happens to our rubbish?** Handy guide to recycling
- 32** **NHS news round-up** From healthy living to first responders

## REGULARS

- 28** **Coast and country** Rural and coastal news
- 30** **Trailers** Events and activities



ONE ISLAND is published by the Isle of Wight Council. The council does not accept responsibility for goods or services offered by advertisers. Additional copies are available from the Customer Service Centre at County Hall, libraries and other council facilities. Typetalk calls welcome.

Written, designed and produced by the Publications Unit, Corporate Communications, Isle of Wight Council.

ISSN 1752-8038

© COPYRIGHT 2007

Isle of Wight Council,  
County Hall, Newport,  
Isle of Wight PO30 1UD.  
Printed on environmentally friendly  
paper by Belmont Press.



When you have finished with this magazine  
please pass it on or recycle it

# Islandimage



Picture by: Carol Turvey - Boats moored off Cowes

One Island is available on request as an audiotape, in large print, in Braille and in other languages.  
For further details, please contact One Island on 823105. The magazine is also available online at [www.iwight.com](http://www.iwight.com)



## Island middle schools top of the class

Recently released results have placed the Island as England's third placed council area for the sustainable improvement of pupils aged 11 over a four year period.

The Department for Education and Science achievement and attainment tables revealed improvements in all areas for the Island's middle and primary schools.

Results in English were just below the national average (79 per cent) at 78 per cent, a two per cent point increase on 2005. Eight Island middle schools reached or surpassed the national average.

Maths results improved by five per cent from 2005, reaching 74 per cent and ten middle schools achieved results which met or improved on the national average of 76 per cent.

Science results improved by three per cent on those of 2005, increasing to 89 per cent. Eleven middle schools achieved results at or above the national average of 87 per cent.

There was also a major improvement compared to 2005 in those pupils achieving higher performance (level 5) in the national tests. There were increases of nine per cent in English and six per cent in maths. In science, a five per cent increase took the Island above the national position by one per cent.

Head of school improvement, Chris Vieler-Porter, said: "This is great news, but there is still work to do. This is a boost and we will continue to strive towards improving standards."

## Protecting yourself against the 'holiday from hell'

We all look forward to holidays – a chance to relax and unwind. But what if your trip away turns into the holiday from hell?

The council's trading standards section has provided this handy guide to help protect against a bad holiday experience.

- When booking your holiday, confirm with your travel agent that the brochure price is the price you will pay, and that there are no hidden charges. Use your credit card (this may give you extra protection).
- Shop around for holiday insurance. You don't have to take the insurance offered by the tour operator.
- Check to ensure all the facilities you are expecting will be available, and read the brochure small print.
- Take your brochure on holiday with you, and if you're not satisfied, complain straight away to your tour operator. Fill out a complaint form and keep a copy.
- Gather evidence (photos and video) and get the names and addresses of holidaymakers who are also unhappy.
- When you get home, write a letter of complaint immediately, and be persistent if you are not happy with the response.



### Did you know?



The council's *iweight.com* website averaged 115,000 individual visitors per month in 2006, a major increase on the 2005 average of 97,000 (these figures do not include multiple visits from a single visitor).



## Comparing package and DIY holidays

Many more people are now cutting out package travel operators and putting their own holiday package together.

Julie Woodhouse, senior fair trading officer, said: "Millions of UK travellers will create their own version of the package holiday, and many will jet off unaware they may lose their money or be stranded abroad if something goes wrong."

Cutting out the middleman may bring potential pitfalls the DIY holidaymakers need to be aware of.

Consumers who buy a traditional package holiday from a tour operator – with flights, and hotel accommodation included – are protected by *The Package Travel, Package Holidays and Package Tour Regulations 1992*. These state that a tour operator must make sure that your holiday money is protected through bonding, and that arrangements must be made to repatriate you if the operator becomes insolvent while you are away (many operators and travel agents are bonded via their ABTA membership).

Many DIY holidaymakers assume they will be covered if their airline, operator or agent goes bust. But if an airline with whom you booked direct, or purchased a ticket from via a 'bucket shop' becomes insolvent while you are away, your insurance will generally not cover repatriation to the UK, and you will have to pay the cost yourself. Paying by credit card, as opposed to debit card, may help you in certain circumstances but it still won't get you home.

- For further advice contact Consumer Direct on 08454 04 05 06 or the council's trading standards service on 823396.



Commercial gambling in this country will be subject to a new system of licensing and regulation from this year.

The Gambling Act 2005 comes fully into force on 1 September 2007 – giving councils new and extended responsibilities for licensing premises. In some cases councils will take on duties previously carried out by magistrates.

The new legislation will apply to existing and new entrants to the gambling industry, and will include premises offering gaming machines and other forms of gambling such as pubs, clubs, arcades, betting shops, bingo halls, casinos and lotteries.

Current licence holders may convert their existing permissions to an equivalent under the new Act. These must be made to the Gambling Commission between 1 January 2007 and 27 April 2007. Applications for premises licences and other permissions must be made to the council between 30 April and 30 July 2007.

New applicants will be able to apply either to the licensing magistrates or council (as appropriate) under existing legislation until 27 April 2007. After that date all applications must be made to the Gambling Commission and council in accordance with the new Act.

Warren Haynes, environmental health manager, said: "We are aware the implementation of the Gambling Act 2005 may cause concerns for existing and prospective applicants including smaller operators, community groups and charitable organisations.

"Applicants are encouraged to contact the licensing section for guidance and information as soon as possible, to ensure a smooth transition to the new legislation."

- For more information on the Gambling Act 2005 please contact the Environmental Health Department, Licensing Section, Jubilee Stores, The Quay, Newport, Isle of Wight PO30 2EH, tel: 823000, email: [licensing@iow.gov.uk](mailto:licensing@iow.gov.uk) or see [www.iowight.com](http://www.iowight.com) for frequently asked questions.

## New zone helps say NO to cold callers

A *No Cold Calling Zone* to deter unscrupulous sales visitors has been created in Bembridge.

The zone has been set up by the council's trading standards section, in partnership with Bembridge parish council, the police, Safer Communities, the fire service, Age Concern Isle of Wight and Neighbourhood Watch.

The number of serious doorstep crime incidents reported to police and trading standards nationally has grown significantly in the past few years.

*No Cold Calling Zones* can target criminal and unscrupulous callers often associated with products such as cheap roofing or driveway repairs.

A national Trading Standards Institute survey showed that 96 per cent of people simply did not want doorstep cold-callers.

The zones, however, are not aimed at legitimate, respectable businesses.

- More information on *No Cold Calling Zones* is available from Julie Woodhouse, senior fair trading officer, tel: 823370.



## New housing chief

A new head of housing has been appointed by the council. Mark Howell (pictured), previously with North Cornwall District Council, will work with partner agencies to tackle key issues including affordable housing and homelessness.

He has a broad range of knowledge and experience in the housing sector and will help the council deliver the key priority of lower-cost housing for Islanders.

## Councillor numbers and boundaries to be reviewed

It may seem a long way off, but when the next elections for members of the council are held in 2009 there may be changes to the boundaries of existing wards (electoral divisions), and there may be fewer of them.

The council recognises many people think there are too many councillors, and in October last year it welcomed the news that the Boundary Committee for England had been directed by the Electoral Commission to carry out a review (which started on 13 February). The council supported a resolution that there should be a reduction in the number of elected members. There will be public consultation on the council's submission.

The Boundary Committee will also be seeking to amend the imbalance in electorate size between some wards. The current average number of electors per councillor is 2,280, but Gurnard ward has only 1,526 electors, while Wootton has 2,900. The committee will aim to achieve a distribution of wards so no ward varies from the average by more than ten percent.

Anyone can give their views on the boundary review to the committee, and should send them to: The Review Manager (Isle of Wight), The Boundary Committee for England, Trevelyan House, Great Peter Street, London SW1P 2HW (by no later than 4 June 2007).

## Use your local book bank to help Oxfam

If you have any books, CDs, DVDs, videotapes or vinyl records you no longer need then perhaps think of taking them to your local Oxfam book bank or store.

Since December there have been book banks at Tesco at Ryde and Sainsbury's at Newport, as handy collection points for donating these items to the Oxfam shops at Ryde and Newport. Oxfam approached the council last year to help it find the sites for the banks.

The Ryde shop, opened in the High Street at the start of December, is a specialist book and music store, whereas the Newport store (in Upper St James Street) takes general items, including books.

Jenny Botwright, who manages both shops, said: "People can take their books to either the book banks or either shop. Generally the books deposited at the Ryde bank are used for the Ryde shop and those at Newport for the Newport shop."

Jenny said the Ryde shop had been doing well since it opened, but stressed they were always keen for new items to be donated. The shop carries a wide selection of books for all ages and tastes.

"If you have any books you no longer need, we would be very pleased to receive them. We would like to remind people though that the book banks are only for books and CDs, etc – not for newspapers or magazines, which on occasions have been left."

If you want to take your books direct to the Oxfam shops, the Ryde shop is open from 9.30am to 4.30pm (Monday to Saturday) and the Newport shop from 9am to 4.30pm (Monday to Saturday).



## Fighting disability discrimination

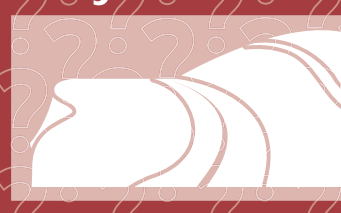
The council has received special recognition for its work promoting and developing a disability and equality scheme for the Island.

It has been awarded the overall disability award by DIAL (Disability Information Action Line) acknowledging a scheme aimed at combating discrimination due to disability.

The council is one of the first local authorities in the country to develop a partnership approach to tackle disability discrimination, linking with public, private and voluntary organisations such as the Island Access Group (IAG).

• Further information on the scheme is available from Rosie Barnard, principal equality and diversity officer, tel: 823091 or email: [rosie.barnard@iow.gov.uk](mailto:rosie.barnard@iow.gov.uk)

## Did you know?



The council looks after 110 kilometres of coastline, 822 kilometres of roads and pavements, and 827 kilometres of public rights of way.

## Getting to grips with homelessness

A five strong team of officers dedicated to help tackling homelessness on the Island is now up and running.

The new housing options and homelessness prevention team based in Newport High Street offers high quality advice to residents who are threatened with, or who have been made homeless.

The team has received specialist training from housing charity Shelter to help deal with the 4,500 people currently on the Island's housing register. Although the law says housing registers must be open for

all to apply to whether they live on the Island or not, the council is committed to giving priority whenever possible to Island residents. The team's approach focuses on identifying those in the greatest housing need and then helping them to find a solution to their housing problem.

Contrary to popular belief properties are let to Island people. Over the last three years 98 per cent of housing association lettings have been made to applicants who were already resident on the Island.

On the few occasions when a property is let to a non-resident it is usually because the property is difficult to let (eg a sheltered flat for an older person) or because someone has a family connection to the Island and needs to return.

• For more information on housing you can contact the housing services team on 823040, call in at 7 High Street Newport, or visit the housing website at [www.iwight.com](http://www.iwight.com)





## Downside Middle School – making a difference in the community



Downside Middle School at Newport has been making a major community impact over the past two years through the Extended Schools' scheme.

The project involves schools working with the community to offer learning chances to both pupils and their parents.

Downside forged close links with Family Learning for Pan so parents can come into school each week and work with their children to improve their results.

The school also offers a 'back to work' project, called Suit Yourself, giving advice on interview skills, writing a CV, and assertiveness and listening skills.

Other initiatives through the scheme, include:

- links with Medina High School to involve Downside with the summer Newport carnival parade, and winter carnival and lantern parade;
- staging Newport Women's Day at the school, featuring workshops including plumbing, carpentry, electrical skills, and savoury Christmas cooking;

- two school-based youth workers at Downside, listening and supporting students on a range of issues, and providing a youth club at the Isobel Centre, Pan, two nights a week;

- an allotment project – a collaboration with Extended Schools, the Pan Neighbourhood Project and the Workshop Inclusion Project (WISE) – with pupils visiting an allotment plot twice a week to work with project workers, and grow fruit and vegetables (*pictured above left*).

Fran Shelley, Extended School manager, said: "The extended school programme is one of the most exciting developments for schools in decades – the whole staff team at Downside are right behind it, as they know the difference this makes in improving standards in school."

Downside also takes part in the Car Mechanics' Project at KJ's Youth Centre two evenings a week (*pictured above right*).

## Key fire service decision this month



This month the council will make a vital decision on the future of the Island's fire and rescue service.

Three options will be put before members when they meet to discuss the service that has been improving since being rated as 'poor' in the Comprehensive Performance Assessment (CPA) 2005.

The options are to keep the status quo, to collaborate more closely with colleagues in Hampshire Fire and Rescue Service, or to combine with the neighbouring authority.

Each option would retain the standards of response and continue prevention work to drive down the risk of fire breaking out. Stations, fire appliances and firefighters would remain on the Island irrespective of which option is chosen.

The meeting comes after an extensive consultation exercise that has sought views from Islanders in writing, via an online questionnaire and at 11 public meetings held recently.

The full council will make its decision when it meets in the council chamber at County Hall, Newport on 21 March. The meeting starts at 6pm and members of the public are invited to attend.

## Keeping tabs on contaminated land

Measures to identify all potentially contaminated land on the Island have recently been completed by the council's environmental health section.

It means sites on a priority list can now be inspected to see if any contamination is actually present.

Keeping tabs on such land is governed by the Environmental Protection Act 1990. In the past this work by the council has focused on using historical maps dating back to 1862, but digitised maps have now been developed

from the old maps and are held on a Geographical Information System (GIS) to improve the process.

Steve Burrige, environmental protection officer, said: "This involved detailed study of the numerous maps going back to 1862, then careful data analysis and input to produce the GIS maps."

As well as the new inspections of land, the environmental health section will continue to require developers to investigate potentially contaminated land as

part of the planning process. So far this has led to investigation and remediation work at more than 150 sites on the Island.

- If a property is sold, solicitors are now routinely asking for environmental searches to be undertaken. If these searches show there is potentially contaminated land at the property or nearby then further advice can be sought from environmental health on 823000, or by emailing [eh@iow.gov.uk](mailto:eh@iow.gov.uk)

## Investigation into Undercliff Drive issues

In November 2006 the council commissioned the monitoring officer of Southampton City Council to undertake an independent legal review of the procurement of consultancy services in relation to the Undercliff Drive project (in the St Lawrence and Niton area).

The report found that in 2001 the council acted either in ignorance or disregard of procurement rules and regulations and that the appointment of High-Point Rendel was unlawful. The report also noted that despite the situation being known to some officers of the council through independent legal advice received more than two years ago, no action appeared to have been taken to remedy the situation.

As a result the full council has agreed to set up a cross-party investigatory and disciplinary committee, which will:

- investigate the circumstances leading up to the letting of contracts for works at Undercliff Drive;
- consider the advice of external lawyers in relation to the current contract;
- ensure actions are taken to remedy the procurement position;
- investigate whether any action is required in relation to council officers;
- ensure that the council, having learnt the lessons of the independent reports it has had, has procurement processes that are robust, and that officers and members abide by.

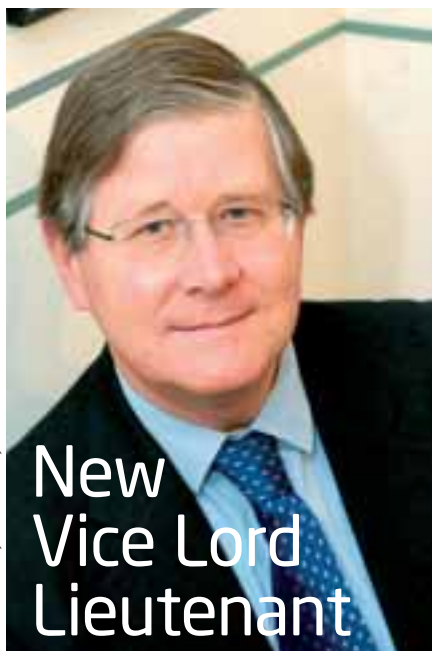
Stephen Taylor, Audit Commission head of audit (South), said: "I share the concerns of the council in relation to the Undercliff Drive contract and overall procurement processes and in particular the lack of action since concerns were pointed out to the council in 2005. I am however satisfied with the rigour of the independent review by Southampton City Council and the steps currently being taken by the Isle of Wight Council to regularise the position. This demonstrates that the council is now taking the matter very seriously and in light of this, there is no further action for me to take at the present time."

## Did you know?



In 2005/2006 the council carried out 1,453 home fire safety checks.

Picture courtesy of IW County Press



## New Vice Lord Lieutenant

The Island has a new Vice Lord Lieutenant to support Lord Lieutenant Major General Martin White when he is unable to carry out his duties. He is Lieutenant Colonel Sir Guy Acland, who has family links with the Island stretching back 50 years.

Sixty-year-old Sir Guy, who succeeded to the Baronetcy in 1983, served many years with the Royal Artillery, including tours in Northern Ireland and staff duty at the Ministry of Defence.

He was later seconded from army duty to the household of the Duke of Edinburgh at Buckingham Palace, and on his army retirement in 1994 was appointed equerry to the Queen and Deputy Master of the Household.

Sir Guy retired from the Royal Household in 1999 and became the administrator of The Hospital Saving Association Charitable Trust. He is chairman of the Army Benevolent Fund on the Island, a director of Ryde School and president of the Isle of Wight Scouts.



## Top award for joint learning

The council's family learning service team (pictured above) has scooped a top national title recognising its work in helping families learn together.

It has been awarded Share Local Authority of the Year 2006 by the national learning organisation Continuity.

The award recognises the council's Share programme – an initiative helping parents and youngsters to learn literacy and numeracy skills together.

A tutor from the Isle of Wight College at Newport was seconded by the council to help deliver the programme (which offers workshops to parents).

The tutor also hosts meetings between teachers to share best practice and produces a termly newsletter for teachers as well as training for the Share programme.

## Celebrating Island architecture

High quality architectural design on the Island is being celebrated at a special exhibition taking place at Quay Arts, Newport from 3 March to 7 April.

Titled *RIBA Wight – new Island architecture*, the multimedia exhibition features presentations by ten architectural companies, showing works of design that deal with renovation, using space, conservation and sustainability.

There will be photos, drawings, models and projections on display showing already constructed projects as well others which may change the Island's architectural landscape in the future.

Various events are also linked to the exhibition, including the Isle of Wight Society Conservation Awards, to be presented by Alan Titchmarsh on 21 March.





## Arts unit round-up



### Touring theatrical treat

The Arts Away initiative is bringing a touring theatrical treat to the Island this month.

The Blunderbus Theatre Company will be performing *The Rainbow Fish* at Chale Primary School (Friday 30 March, 6.30pm) and at Nettlestone Primary School (Saturday 31 March, 3pm).

The show takes the audience on a deep-sea adventure, with live music and puppetry to bring the enchanting tale to life. The performance is suitable for those aged four years plus and lasts for about 50 minutes. Tickets are available in advance from Chale school, or tel: 613911 for Nettlestone. For more information log on to [www.blunderbus.co.uk](http://www.blunderbus.co.uk)

### The New Rope String Band



The Old Rope String Band (Pete Challoner and Tim Dalling) has joined forces with two other gifted musicians (Jock Tyldesley and Vera van Heeringen) to create a new four-piece performing a wide assortment of music, including hoedown pan-Celtic and old-time down-home music.

The New Rope String Band (*pictured*) will be appearing on Saturday 24 March at Ryde High School Theatre (7.30pm). Tickets cost £8 and are available from the council's arts unit (tel: 823813).

On Thursday 22 March at Totland Church Hall, Circus Berzercus will be performing to mark the re-launch of the Arts Away touring scheme.

The Arts Away touring scheme has been bringing professional music, dance, theatre and children's shows to the Island's smaller and more rural communities for a number of years.

Circus Berzercus is packed with chaotic clowning, dazzling juggling, unicycling, mindboggling magic and audience participation, with a hint of danger. It is suitable for all the family, with tickets costing £5 for adults and £3 for children, available from Totland Pharmacy. The show starts at 7.30pm.

Any parish councils or local organisations interested in becoming part of Arts Away should contact the council's arts development officer Maria Wilkinson on 823833, email: [maria.wilkinson@iow.gov.uk](mailto:maria.wilkinson@iow.gov.uk), or come along half an hour early to the 22 March performance to get more information.



For more details of any of these events please call the arts unit on 823813, or email [hannah.birks@iow.gov.uk](mailto:hannah.birks@iow.gov.uk). All details were correct at time of print. Further up-to-date information is available on [www.isleofwight-arts.co.uk](http://www.isleofwight-arts.co.uk) on the Rural Arts/Arts Away pages.



## Yarmouth heritage trail

Special numbered mosaic plaques have been appearing in Yarmouth in recent months, marking a new history trail which is part of the Celebration of Yarmouth's History project.

The trail identifies 18 buildings and other locations of historical interest in and around the town, and those wishing to follow it can obtain a guidebook (*Yarmouth on Foot* by Geoff Cotton) from the tourist information office on Yarmouth Quay.

Plaque One on the trail is across the road from the tourist information centre, and among the places of interest the trail features are seven listed buildings, including Yarmouth Castle.

The plaques were made by local mosaic artists Helen Goodman and Dawn Campbell, who also put together a 13-metre long mosaic mural depicting scenes from the town's history.

The Celebration of Yarmouth's History project has been funded by a Local Heritage Initiative grant and the Nationwide Building Society.

To complete the project to celebrate Yarmouth's history, English Heritage is completely renewing the contents and presentation of the castle this winter to make it the main tourist attraction in the town.

## What's new on *iweight.com* for 2007?



Look out for some of our new features on *iweight.com* in the next few months. Having taken on board your views and feedback, the site has been redesigned.

The new look *iweight.com* will host lots of new features, including improved accessibility and will give the user the ability to adjust the width of the website and change the text size at a click of a button.

Information on the site will also become easier to navigate to, with better use of the homepage and section homepages. The new look site is due to be released during spring 2007.

It is also worth remembering that the facility exists on *iweight.com* to submit your details by completing a short one-off questionnaire and in doing so, to build up a profile of yourself that can be used to personalise your visit to the website. This section of the site is known as 'My Profile' and enables you to deal with the council directly if you wish to.

Using 'My Profile' you can add and amend your own events in our new events' system. New features will include the ability to add pictures for your event and also a question and answer section so that people can ask you about your event. Your responses will then be displayed online for all to see.

## Funding boost for Island youngsters



Young people on the Island are benefiting from £162,000 of new funding for a wide range of projects and activities.

The money has been received by the council for distribution under the government's Youth Opportunity and Youth Capital Funds, and the recipients have been decided by a group of young people on behalf of their counterparts.

Dozens of projects, groups and individuals have attracted grants, covering activities from DJ workshops to arts and film projects.

A total of 34 applications have been successful, each being awarded cash ranging from £100 up to £10,000.

The beneficiaries include young people from West Wight Youth Centre, awarded the maximum amount to set up the Freshwater Multi-use Games Area (MUGA).

Also benefiting are young skaters from Ryde, with Ryde Youth Forum receiving £10,000 to help build new ramps at the town's skate park.

An organisation called Ventnor Together is receiving £10,000 to set up a youth café with internet access, and Shorwell Netball Club is getting £4,600 to buy new equipment for training and games for more than 100 youngsters.

The 1st Isle of Wight Sea Scouts, meanwhile, will be getting £10,000 to refurbish their boatshed, so it can meet new safety standards.

The total value of the projects to receive funding is due to pass the £345,000 mark, as many already have additional funding on top of that under the Youth Opportunity Fund. Those that were unsuccessful in bidding for funding are being invited to re-apply in April.

## Confidential service helps people with learning disabilities

A special confidential service is being made available to advise those with a learning disability about sexual health matters.

Shield (Sexual Health Information Education for People with Learning Disabilities) has a clinic at St Mary's Hospital, Newport, which offers advice, information and treatment.

The Shield team can offer guidance and support to clients, parents, carers and staff and the clinic can be accessed by ringing 534202 for an appointment.

Further information is available by calling 814287 or emailing [teresa.day@iow.nhs.uk](mailto:teresa.day@iow.nhs.uk) or [sandie.munt@iow.nhs.uk](mailto:sandie.munt@iow.nhs.uk)

## Did you know?



In 2005/2006 the council assisted 550 adults with a learning disability to meet their personal care needs.



## Celebrating St George's Day

The Rotary Club of Cowes is organising special St George's Day celebrations for the third year running in April.

The celebrations will be taking place at Northwood House, Cowes on 20, 21 and 22 April and as well as marking St George's Day will raise awareness about the work of Rotary in raising funds for local charities.

On Friday 20 April there will be an international-standard concert, arranged with the help of [island.concerts@ntlworld.com](http://island.concerts@ntlworld.com), and on Saturday 21 April there will be a St George's Day procession, complete with St George and the dragon, as well as a fancy dress competition, re-enactments, children's country dancing and an art competition for schools.

The celebrations conclude on Sunday 22 April with a large classic car and bike display featuring more than 100 vehicles, and an antiques and collectables fair.

Throughout the weekend there will be local arts and craft stalls, children's amusements, storytellers, as well as a magic show and a teddy parachute drop.

## Libraries round-up

### No more fines for under-16s



From the start of March there will be no more fines for children under 16 who are late in returning their books to Island libraries.

The move follows many new young users being attracted to the libraries after fines were removed a few years ago for the late return of books for children aged under six.

Rob Jones, libraries officer, said: "Reading for pleasure can make a huge difference to a child's life. Children who enjoy reading tend to do better at school. When we asked children and families what they wanted from the library service, many said that they wanted the fines to go.

"We want all children to have equal access to our books and information, but some children have been prevented from borrowing books because of the fear of having to pay."

The removal of fines is one of various initiatives by the library service to encourage children to discover the pleasures of reading. Other schemes include:

- the *Summer Reading Challenge*, which encourages children to read six books during the summer holidays, and has been proved to make a big difference to a child's reading levels when they return to school (almost 2,400 children took up the challenge in 2006 – a 25 per cent increase on 2005);
- a daily *Homework Hour* (in every library), during which children can use the library computers for free, if for schoolwork;
- *Bookstart*, a national scheme gifting all pre-school children three books, and giving their parents advice and encouragement on using books with babies; also the *Bookstart Book Crawl*, with under-fives receiving colourful certificates just for borrowing books; and regular *Rhyme Time* sessions (at some libraries), fun sessions with rhymes and songs.

### Using the virtual library

You can use the virtual reference library from any computer whether in a library, at school, at work or at home. From the library service website at [www.iwight.com/thelibrary](http://www.iwight.com/thelibrary) simply follow the link to the virtual library. By entering your library card number you can gain access to a wide range of authoritative reference works, including the entire Encyclopaedia Britannica, the complete Oxford English Dictionary, Groves Dictionary of Music and many other online versions of reference works.

### Read all about it

Every week each library on the Island receives updates for the top ten paperback fiction books published in the UK. This means that every library will have at least one copy of every book in that week's top ten and some libraries will have multiple copies. This should make it much easier and quicker for readers to get hold of the latest popular fiction.

If the latest books are out on loan you can check the *Ripples* posters, which suggest other books and authors similar to those on the top ten list.

### Catch a film at the library

Each Monday Island libraries receive the latest DVD titles. There are DVDs in each library covering a wide range of films (including foreign language) as well as children's cartoons.

The great thing about borrowing DVDs from the library is you can keep them for a full week for only £2.75, or if you only want to hire them overnight you can do this for just £1.

### Our libraries want you back

With the removal of fines for children the library service hopes to encourage many of its former readers to return. A week-long fines' amnesty from Saturday 10 March to Sunday 18 March is due as part of this initiative.



# One Island, one vision

This year, more than ever before, the Isle of Wight Council has relied on your views to help shape its budget and plans for the year ahead.

This four-page budget special gives a flavour of how and where we will direct our funds and what it means for you in terms of council tax.

On this page we explain how you have helped shape our plans, and opposite how we are responding positively to your views through the *One Island* projects.

Then on the next two pages we explain spending and council tax details for 2007/2008



## Your council tax

2007-2008



## How you shaped the budget

Last week the council set its budget and council tax levels for the next 12 months. At 1.89 per cent, the increase was below inflation – one of the lowest in the country and the lowest in the authority's history.

At the heart of our budget-setting process were the priorities you highlighted for attention in the residents' survey of last year and at recent follow-up public and stakeholder meetings.

The council grouped your priorities under three headings – respect, pride and value – which in turn are being developed in the form of specific projects under the banner *One Island*.

## Why One Island?

The *One Island* banner reflects our determination to bring the Island together, working with one shared vision – encouraging respect and enforcing order, developing a renewed pride in our towns and villages as well as providing value-for-money services. *One Island* is a programme of practical actions to deliver improvements to the quality of life on the Island, such as cleaner, safer streets.

### Respect

We want to encourage better neighbourhood relations. We will work harder to understand and act on community concerns, alongside the police. We will also focus on improvements to the environment and the street scene.

**Key priorities** you identified were: tackling anti-social behaviour, particularly young people on the streets; improving the behaviour of parents as an example to children; improving the quality of the street scene and environment; and tackling speeding drivers/road safety.

**Practical ideas** from the public meetings were: consult more with young people; provide more things for young people to do, such as teenage shelters and youth clubs; work with young people to clean up after crime and to respect their community; more visible policing and information about what police are doing; involve local communities more in deciding how to deal with anti-social behaviour.

### Pride

We want to encourage active local involvement and provide the social and education services that help individuals and communities thrive. We want to create a sense of local pride right across the Island.

**Key priorities** you identified were: ensuring we have clean, rubbish-free streets and an improved local environment; reducing vandalism and graffiti; ensuring sustainable development; more consultation/involvement with the public; protecting vulnerable people; improving educational attainment.

**Practical ideas** from the public meetings were: more litter bins; encourage more recycling; persuade supermarkets to reduce packaging; improve public toilets; more dropped kerbs for vulnerable people; protect beaches and the natural beauty of the Island.

### Value

We want to provide value-for-money council services at an affordable council tax level – at or below inflation every year. We want to ensure we are spending this money in areas that are important to you.

**Key priorities** you identified were: improving the quality of roads; improving the transport infrastructure; improving public amenities and services; protecting vulnerable people; improving educational attainment; improving the Island's economy; tackling crime and anti-social behaviour; improving communications and consultation.

**Practical ideas** from the public meetings were: increase council funding on roads; large supermarkets/stores should contribute towards road improvements due to the impact of their heavy lorries; improved parking facilities to take cars off the road.



**"We have set a council tax increase of just 1.89 per cent. This is below inflation and one of the lowest rises in the country."**

**"The *One Island* projects are a direct response to what residents have told us are the issues that they want to see addressed."**

**"We believe these projects will make a big difference to the lives of us all as well as making the Island a better place for people to visit."**



**Andy Sutton**  
Leader, Isle of Wight Council



**£1.5 million for Island towns**

### **£1.5 million-plus investment to smarten up Island towns**

More than £1.5 million will be spent on plans to smarten up Island towns in the coming year. At the forefront of this initiative will be 11 town centre managers to act as council trouble-shooters at grass roots level.

Based in the towns, it will be the town managers' roles to identify work that needs doing to keep the town centres ship-shape. They will also make sure council contractors undertake the work expected of them, and will report potholes, tatty or damaged street furniture and other issues of concern, for action.

Town managers will also have limited enforcement powers to tackle issues like abandoned vehicles, people who drop litter or dog walkers who let their animals foul pavements.

The council has also found an additional £500,000 for improvements to the public realm. That cash will be spent on a comprehensive programme of improvements to street furniture, providing an immediate impact.

### **£800,000 investment in public toilets**

Seven public toilets will be rebuilt or refurbished in an £800,000 drive to upgrade conveniences across the Island. And a further £50,000 will be spent on providing attendants to man toilets at the busiest periods throughout the year. The attendants will ensure the toilets are clean and fully stocked when in greatest use.

### **Big funding boost for Island Games**

The council has pledged a total of £1.3 million of investment over the next four years to maximise the benefit to the Island from the International Island Games.

The money will be used to increase opportunities for Island residents to take part in sports, improving links between schools and clubs and helping to develop talented athletes so that they have the best chance of representing the Island at the 2011 games. The cash will also be used to appoint a director of the games in 2009.

## Responding to your priorities

### One Island – investing in the Island

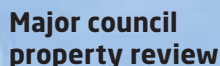
In its budget the council has allocated millions of pounds for a series of schemes designed to make a positive and immediate impact on Island life.

The *One Island* projects include:

- the appointment of town managers;
- a massive overhaul of public toilets;
- the creation of a new company to ensure the successful running of the Island Games;
- free homecare packages for over 80s;
- a new strategy to tackle homelessness;
- funding for young people, including swimming and libraries;
- the handover of more powers to town and parish councils;
- a major initiative to raise standards in Island schools;
- a massive investment in road safety schemes;
- the One Million Blooms initiative to create imaginative and striking floral displays at sites across the Island.



**£1.3 million for the Island Games**



Thousands of elderly residents on the Island eligible for local authority care will get their home care services free from April 1. The pioneering move will see people aged over 80 who may be asset rich but cash poor receive free home care.

This will allow these residents to remain within their own homes and receive the care they are entitled to, without having to dip into their savings or property to finance it.

The council is investing in services for local young people. The free swimming which has been provided for children during half-term is being extended to school holidays throughout the year.

Young people – and adults – will benefit from extended opening hours in libraries, including Ryde and Lord Louis opening seven days a week from April.

A sum of £150,000 is being put into extending opening hours for youth clubs, and to include school holidays.

A major programme is being investigated which could see the County Hall site sold off and a joint headquarters built with the Island's Primary Care Trust and the police.

The whole of the Newport Harbour, South Street and County Hall area could be redeveloped

under the proposals that form part of the council's review of its stock and buildings.

All council owned property will be looked at under the review. We intend to use our property for the benefit of Islanders by reinvesting cash in services, stimulating regeneration and enabling assets to be used more effectively at a local level.

The council is working towards greater partnerships with town and parish councils. A number of services currently run and maintained by County Hall will be devolved, or in simple terms, handed over to town and parish councils. This may include the ability to monitor Isle of Wight Council contracts, management of toilet blocks, and being in a stronger position to offer help and advice to residents.

A pilot project is due to begin in April involving Wootton Parish and Brading Town Councils.

The council is continuing its commitment to improving education standards by setting out a series of objectives. They include enhancing training given to school leaders to focus on key areas around the assessment of pupils and their learning, funded by £1.3 million from the

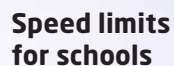
Department for Education and Skills. The benefits of this include identifying pupils' strengths and weaknesses, and developing clearer objectives within lessons.

Speed limits of 20mph could be introduced outside every Island school in a new initiative. A sum of £200,000 has been set aside to begin an Island-wide programme to see speed restrictions put in place wherever it is legal to do so.

In many cases, the speed limits will be accompanied by traffic calming measures to ensure they are complied with.

It has also been announced that £1.65 million is being made available for road safety measures including anti-skid work and installing reactive speed signs.

Plans have been drawn up to invest half a million pounds to improve information communication technology and customer services. There will be improvements in the effectiveness of the systems behind call routing, handling and online services – all aimed at delivering better customer services.



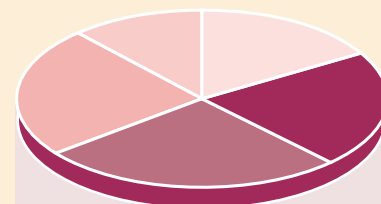
Your council tax increase for 2007/2008 has been set at **1.89 per cent**, below the level of inflation and one of the lowest in the country. It equates to a rise of £21.80 for a band D council tax payer.

Here we explain how your council tax contributes to our overall funding, where we will spend our funds in 2007/2008, and what the council tax for your band is. Also the figures for your parish or town area and the Hampshire Police precept.

The money the council uses to provide services comes from:

- formula grant from the government;
- the council tax;
- grants for specific services and projects;
- income from charging for certain services.

Since April 2006, all school provision has been funded through a specific grant called the dedicated schools' grant. This includes funding for schools' delegated budgets as well as pupil referral units, special educational needs, childcare and early education and other services provided by the council for schools.



Formula grant - 16.5%  
**£50,701,000**

Council tax - 20.6%  
**£63,290,000**

Specific grants - 26.5%

**£81,306,000**

Dedicated schools' grant - 23.2%  
£71,223,000

Income generation - 13.2%  
**£40,518,000**



## Where the money will go in 2007/2008

	This year £'000	Last year £'000
Fire service	6,670	6,797
Children's social services	14,247	12,552
Adult social services	21,602	19,735
Older people social services	30,885	30,738
Housing services	57,664	55,495
Schools' budget	93,207	88,439
LEA budget	13,878	12,687
Coastal protection	434	372
Environmental health: consumer protection	1,543	1,540
Public toilets	692	665
Trading standards: consumer protection	563	555
Street and beach cleansing	1,648	1,625
Waste management	7,696	7,225
Highway maintenance	5,222	5,186
Street lighting	665	701
Public transport	4,468	3,762
Planning and development control	2,884	3,000
Economic development and regeneration	882	788
Recreation and sport	5,650	5,360
Parks and open spaces	2,513	2,323
Tourism	2,399	2,547
Libraries	2,294	2,170
Public realm improvements	1,050	0
Other services	20,129	18,501
Other financing	8,153	8,262
<b>Gross expenditure</b>	<b>307,038</b>	<b>291,025</b>
Less: specific grants and other income	-121,824	-111,811
<b>Budget requirement including schools</b>	<b>185,214</b>	<b>179,214</b>

## Four factors that affect what you pay

### 1. The level of tax set by the Isle of Wight Council

The level of tax set by the council to cover the cost of the services it will provide in 2007/2008 is 1.89 per cent higher than in 2006/2007.

This is the smallest increase on the Island since council tax was introduced.

### 2. The property band you are in

The value of your property, on 1 April 1991, will have been assessed by the independent listing officer, a central government agent. Your property will then have been placed in one of eight bands – your bill will show which one.

Band	Value of property at 1 April 1991	(excluding parishes)
A	Up to £40,000	£863.69 (£719.74)*
B	£40,001 - £52,000	£1,007.63
C	£52,001 - £68,000	£1,151.58
D	£68,001 - £88,000	£1,295.53
E	£88,001 - £120,000	£1,583.43
F	£120,001 - £160,000	£1,871.32
G	£160,001 - £320,000	£2,159.22
H	Over £320,001	£2,591.06

\*Disabled discount.

### 3. The level of spending set independently by the Hampshire Police Authority

The element of council tax that relates to the Hampshire Police Authority will rise by 5.0 per cent in 2007/2008.

## 4. Charges for local services

If you live in an area which has a local council – a town or parish council – your bill will include an amount towards its cost. Where there is no local council, the Isle of Wight Council makes a 'special expenses' charge for the local services it provides in these areas (*see below*).

### Council, police, parishes and towns

The table below shows the combined costs for a band D council tax payer. The figures include the Isle of Wight Council, the Hampshire Police Authority and the Island's town and parish councils.

	£ Per band D property	£ Total 2007/2008	£ Total 2006/2007
Isle of Wight Council	1,170.16	63,030,434	61,180,117
Hampshire Police Authority	125.37	6,753,030	6,362,765
<b>Parishes</b>			
Arreton	10.13	4,000.00	3,800.00
Bembridge	42.20	86,400.00	72,000.00
Brading	46.11	38,000.00	31,500.00
Brighstone	17.89	15,000.00	15,000.00
Calbourne	21.89	8,895.00	8,720.00
Chale	23.96	6,700.00	6,500.00
Cowes	19.23	79,000.00	77,000.00
East Cowes	23.42	55,335.00	52,700.00
Fishbourne	17.75	7,416.00	8,000.00
Freshwater	21.39	54,340.96	50,449.96
Gatcombe	32.78	6,300.00	3,300.00
Godshill	19.68	12,000.00	11,000.00
Gurnard	29.12	23,000.00	19,570.00
Havenstreet and Ashey	26.25	9,000.00	8,000.00
Lake	15.67	30,000.00	25,000.00
Nettlestone and Seaview	14.06	23,965.00	23,380.00
Newchurch	8.52	9,450.00	9,000.00
Niton and Whitwell	12.43	12,050.00	12,020.00
Rookley	21.03	5,250.00	5,200.00
Sandown	35.72	88,350.00	78,600.00
Shalfleet	16.39	12,200.00	10,500.00
Shanklin	16.16	58,342.00	52,741.00
Shorwell	12.24	4,175.00	3,700.00
St Helens	26.41	15,000.00	15,000.00
Totland	23.30	30,438.00	29,435.00
Ventnor	33.29	90,000.00	99,000.00
Wootton Bridge	27.50	40,600.00	37,300.00
Wroxall	12.79	8,504.00	8,504.00
Yarmouth	35.72	18,471.00	18,471.00

### Special expenses

There are also special expenses for areas of the Island that currently do not have a parish council (*see table below*). The Isle of Wight Council will be spending on services solely within those areas that elsewhere is spent (and raised) by a parish council. These expenses will only exist while there is no parish council for these areas. For more information on this specific point please call 823957.

	£ Per band D property	£ Total 2007/2008	£ Total 2006/2007
Carisbrooke	16.20	18,284.00	11,659.00
Newport	21.27	140,279.00	136,540.86
Northwood	14.34	12,607.00	7,982.00
Ryde	25.29	212,492.00	209,099.00
Whippingham	14.41	5,080.00	3,102.00

Please note: the council is required to show costs as they affect band D council taxpayers.

# The way ahead...

The council is continuing its drive to improve education standards by outlining exciting new plans for 14 to 19 year olds. These have arisen following a number of suggestions made by the Island's public. At a meeting of the council's cabinet in February, proposals submitted by the Learning and Skills Council (LSC) to set up a sixth form college were rejected. During the meeting it was agreed consultation should begin on three possible choices. These options are outlined here...

## Option one

Sixth form provision to be delivered by high schools and the Isle of Wight College as one institution governed by one body. This would involve a single corporation replacing the college and the schools, operating at three or four sites across the Island. This would be modelled on a similar set up currently seen at Oxbridge. However – there may be some technical difficulties with this model as it potentially does not meet the principle of choice and diversity.



## Option two

Sixth form provision will be delivered at three or four sites across the Island in a trust foundation under a single governing body. The college would remain separate. This will involve bringing together the current five high schools under one leadership, or super head. The trust as it has been labelled can be sponsored by both public and private sectors and will offer different provision on different sites. This might mean the current five high schools reducing to three or four sites with each site offering the basic curriculum plus a number of specialist subjects. Students would be able to access their local learning site for support, guidance and the basic curriculum. Collectively the trust could offer the *International Baccalaureate*, something which no single school will be able to do. A single group of trustees will oversee the running of the system with a principal and heads of learning for each site.

## Option three

This is similar to option two, but with each establishment retaining its own governing body responsible for provision. This is effectively a weaker version of the trust. It would be a federation between separate 14 to 19 institutions, with each site retaining some decision-making powers. However, this may not achieve the desired collaboration or provide an effective and diverse curriculum offer.





## Your chance to have your say

Islanders will be able to have their say on which of the options they prefer. A series of consultation meetings has been set up, to which the public is invited:

### 6 March

Ryde Theatre

### 7 March

Cowes Yacht Haven

### 8 March

Medina Theatre, Newport

### 13 March

Broadway Centre, Sandown

### 14 March

Ventnor Botanic Garden

### 15 March

West Wight Sports Centre,  
Freshwater

*Each meeting starts at 6.30pm*

If you are unable to attend a meeting, you can write in with your comments to:

Chris Mathews, Democratic Services Manager, Isle of Wight Council, County Hall, Newport PO30 1UD

or email:  
[chris.mathews@iow.gov.uk](mailto:chris.mathews@iow.gov.uk)

*"We remain totally committed to achieving the best possible educational standards for the Isle of Wight."*

*Patrick Joyce, cabinet member for education, skills and learning*

It is envisaged the chosen option will be fully in place from September 2009. Under whichever option is chosen the Island would retain its present three-tier system, but the structure would be remodelled. This will result in Year 9 pupils being taught at middle school before moving into learning centres at Year 10. It will also mean that pupils will complete Key Stage 3 tests at middle school. Any required modifications to middle school buildings will be undertaken where necessary and some will be rebuilt over time. There are no plans to shut any primary schools.

It will also present an exciting time for education staff, giving them the chance to further their careers while opening up new and exciting opportunities.

In terms of funding one of these options, the council has already secured £30.5 million in funding to rebuild Cowes High School by September 2009 under the government's One School Pathfinder scheme. This will see Cowes become a modern learning centre fit for the 21st century, to benefit the whole Island by offering a range of services and courses.



# Representing Newport

FOUNDED IN the 1100s, Newport has grown over nine centuries to become firmly established as the Island's county town – home to the headquarters of the Island's council, courts and many other services, as well as the Island's major shopping centre.

Today the town and its environs has a population of about 25,000, and as well as electing councillors to the Isle of Wight Council, Newport has its own town management committee, set up as an interim measure in advance of a town council being established.

## Newport Town Management Committee and town council

The Newport Town Management Committee was set up by the Isle of Wight Council in April 2006, as the interim management body until the government gives approval for a Newport town council (by spring 2008).

In August 2006 the voters of Newport petitioned for a town council to be created in all eight electoral wards of Newport and Carisbrooke\*, with the Isle of Wight councillors for these wards sitting on the management committee, together with eight co-opted members of the community.

The current members are:

- Councillors: Geoff Lumley (chairman), Dawn Cousins, Mike Cunningham, Barbara Foster (in an observer role for Carisbrooke), Garry Price, Melanie Swan, David Whittaker, Julian Whittaker.
- Co-opted: Tony Coburn, Clive Page, Stephen Palmer, Shirley Smart, Roy Tiley, Liam Verstraeten, June Winchcombe, Peter Whiteman.

Chairman, Geoff Lumley, said: "Through the management committee and its successor we hope to really get to grips with local issues that are important to Newport. The town has

In future editions of *One Island* we will be taking a look at specific towns, villages and areas across the Island, focusing on how residents' affairs are represented through the Island council and other bodies. We begin with Newport, the Island's county town



## Newport

- Newport Guildhall (pictured left) was created by the famous architect John Nash (1752-1835), who also laid out Regent Street and Trafalgar Square in London, designed the Marble Arch, and rebuilt Brighton Pavilion in its oriental style.

(\*Carisbrooke will be the subject of a separate focus in a future edition of *One Island*).



not had its own council for many years, and we hope this new level of representation will make a real difference.”

The main responsibility of the management committee is to set a budget to help it deliver parish-type services in the Newport area. In 2006/2007 the parish precept raised £41,635 in Newport, to be spent on:

- Newport Carnival support;
- summer flower displays;
- Christmas decorations;
- dog bins;
- specific schemes to improve Newport, such as clearing the banks of the Medina and Carisbrooke ponds, and a young people's cycle scheme in Pan.

The Isle of Wight Council also raised a further £94,907, spent on services (normally provided by town and parish councils) such as:

- parks, open spaces and playgrounds (Seaclose and Victoria recreation grounds)
- cemeteries, such as Mountjoy cemetery;
- grass cutting.

All meetings of the management committee are open to the public:

#### Meeting dates:

Monday 19 March (7pm)  
(Committee room one, County Hall).  
Monday 16 April (7pm)  
(Committee room one, County Hall).

#### Contacts:

For all matters concerning Newport Town Management Committee, you should contact Maxine Yule, clerk to the management committee, tel: 297367, email: [max@yule01.freemove.co.uk](mailto:max@yule01.freemove.co.uk), website: [www.iwight.com/council/parish\\_councils/newport](http://www.iwight.com/council/parish_councils/newport)

## connections

- The pioneer of modern seismology, Professor John Milne (1850-1913) lived at Shide Hill House, Newport, where he built an observatory and issued bulletins summarising data from a worldwide network of seismological stations.
- Marius Goring (pictured right), the stage and screen actor who appeared in films including *A Matter of Life and Death* (1946), and *The Red Shoes* (1948), was born in Newport in 1912.



## Newport area councillors (Isle of Wight Council)

### Carisbrooke East

David Whittaker  
Tel: 526760  
Email: [David.Whittaker@iow.gov.uk](mailto:David.Whittaker@iow.gov.uk)



### Fairlee

Dawn Cousins  
Tel: 523350  
Email: [Dawn.Cousins@iow.gov.uk](mailto:Dawn.Cousins@iow.gov.uk)



### Mount Joy

Melanie Swan  
Tel: 07976 009488  
Email: [Melanie.Swan@iow.gov.uk](mailto:Melanie.Swan@iow.gov.uk)



### Newport North

Julian Whittaker  
Tel: 526760  
Email: [Julian.Whittaker@iow.gov.uk](mailto:Julian.Whittaker@iow.gov.uk)



### Newport South

Mike Cunningham  
Tel: 526882  
Email: [Mike.Cunningham@iow.gov.uk](mailto:Mike.Cunningham@iow.gov.uk)



### Pan

Geoff Lumley  
Tel: 825819  
Email: [Geoff.Lumley@iow.gov.uk](mailto:Geoff.Lumley@iow.gov.uk)



### Parkhurst

Garry Price  
Tel: 07970 202820  
Email: [Garry.Price@iow.gov.uk](mailto:Garry.Price@iow.gov.uk)



See the [www.iwight.com/councillor](http://www.iwight.com/councillor) section for details of projects councillors are involved in and surgery information.

## NEWPORT TIMELINE

Courtesy of information drawn from the online Isle of Wight History Centre at [www.iwhistory.org](http://www.iwhistory.org)

**1118**

Founded by Richard de Redvers

**1381**

French invasion reaches Newport

**1528**

Accusations of witchcraft against two Newport residents

**1611**

In John Speed's map of the Island, Newport has 476 buildings

**1641**

Newport population is 3,000

**1664**

Castle Inn built

**1761**

Charitable school for poor girls opens at Newport

**1786**

Newport Paving Act passed, creating raised pavements in the town

**1798**

New Parkhurst barracks open, introducing major military presence

**1825**

Hospital facilities established in Newport by the Guardians of the Poor

**1838**

Parkhurst barracks adapted to take juvenile prisoners

**1854**

St Thomas' Church rebuilt

**1862**

Railway line opened between Newport and Cowes

**1904**

Seely Library opened in Newport



# The future of our ports

The future development and sustainability of the Island's ports is currently the subject of an important study being carried out by the council. To help complete the study Island residents are being invited to give their views...

"This study is crucial to the future of our ports. It is important we receive Island residents' views to help us develop as complete a picture as possible."

*Ian Ward, cabinet member for environment and transport*

THE COUNCIL'S policy commission for economy, tourism, regeneration and transport is inviting Island residents to complete and return a questionnaire (*see opposite*) on the future of the Island's ports.

The commission was tasked to undertake the Island Ports' Sustainability Study after the council noted the increasing concern of Island residents about the pressure on our roads and infrastructure, caused by rising ferry traffic and visitor numbers.

When completed the study will recommend to the council's cabinet how the council can work with stakeholders to sustain and develop Island ports.

The commission is taking evidence on matters including:

- domestic and commercial cross-Solent user numbers;
- the effect on Island tourism, Island residents and the Island economy;
- visitor, Island resident and commercial demands for cross-Solent travel including bulk freight;
- seasonal fluctuations in user numbers;
- the locality of existing ports and related services;
- the suitability of existing ports and the opportunity for any alternatives.

The commission is NOT looking into either the council becoming

a service provider; commercial and competition issues concerning existing operators; or the viability of a bridge or tunnel.

The commission is keen to receive evidence from as many sources as possible, and so far has heard evidence from key stakeholders, including:

- all the main cross-Solent operators;
- Natural England;
- the Isle of Wight Chamber of Commerce, Tourism and Industry;
- and the Isle of Wight Economic Partnership.

Views are also being currently sought from town and parish councils and town management committees, mainland councils and harbour authorities.

To have your say, please complete the questionnaire on the opposite page and return it to the address given, or complete it online at [www.iwight.com/portsustainability](http://www.iwight.com/portsustainability).

If you have more to add please feel free to send in your views either by email to [scrutiny@iow.gov.uk](mailto:scrutiny@iow.gov.uk) or in writing to Overview and Scrutiny, Floor 4, County Hall, Newport, Isle of Wight PO30 1UD.

The closing date for questionnaires and other comments is Friday 23 March 2007.





## Island Ports' Sustainability Study questionnaire

- 1 Generally how often do you cross the Solent as a foot passenger?  
daily ☐ weekly ☐ monthly ☐ annually ☐

other (please state)

Which routes do you use? (please tick all that apply)

- ☐ Yarmouth to Lymington (car ferry)  
☐ Cowes to Southampton (Red Jet)  
☐ East Cowes to Southampton (car ferry)  
☐ Fishbourne to Portsmouth (car ferry)  
☐ Ryde to Portsmouth (catamaran)  
☐ Ryde to Southsea (hovercraft)

- 2 Generally how often do you cross the Solent with a vehicle?

daily ☐ weekly ☐ monthly ☐ annually ☐

other (please state)

Which routes do you use? (please tick all that apply)

- ☐ Yarmouth to Lymington (car ferry)  
☐ East Cowes to Southampton (car ferry)  
☐ Fishbourne to Portsmouth (car ferry)

- 3 Do you expect your future frequency of travel to increase or decrease?

increase ☐ decrease ☐ no change ☐

- 4 For what reason do you mainly use cross-Solent services? (please tick all that apply)

- ☐ business ☐ sport  
☐ leisure ☐ education  
☐ hospital visits ☐ shopping

other (please state)

- 5 What determines your choice of route? (please tick all that apply)

- ☐ Island base ☐ onward connections  
☐ mainland destination ☐ cost  
☐ preferred service

other (please state)

- 6 How do you usually travel to Island ferry terminals? (please tick all that apply)

- ☐ walk ☐ car (alone)  
☐ cycle ☐ car (shared)  
☐ bus ☐ dropped off  
☐ train

- 7 Do you find the frequency of crossings?

too infrequent ☐ about right ☐

- 8 Do your journeys rely on onward connections by? (please tick all that apply)

- ☐ car ☐ plane  
☐ bus ☐ ferry  
☐ train

- 9 Do you experience problems with sailings running to the timetable?

often ☐ sometimes ☐ rarely ☐ never ☐

- 10 In your view is the price of cross-Solent travel?

too high ☐ about right ☐ too low ☐

- 11 Do you experience problems with traffic around the existing ferry ports?

On the Island:

often ☐ sometimes ☐ rarely ☐ never ☐

On the mainland:

often ☐ sometimes ☐ rarely ☐ never ☐

- 12 If you do not use the current cross-Solent services, what would encourage you to use them? (please tick all that apply)

☐ more frequent sailings ☐ better service

☐ cheaper fares

other (please state)

- 13 Do you think the Island would benefit from additional or alternative routes and services? If so what type of service? (please tick all that apply)

☐ passenger only ☐ all vehicles

☐ car only

And between where?

on the Island

on the mainland

- 14 Would you use cross-Solent high speed vehicle carrying ferries?

yes ☐ no ☐

- 15 Any other comments?

Additional information: You do not have to give this information, but it would assist us with analysing the information we receive if you do

Where on the Island are you based (postcode)

Are you: ☐ male ☐ female

Age band: ☐ under 16 ☐ 16-24 ☐ 25-34  
☐ 35-64 ☐ 65+

Please return to (by 23 March, 2007 at the latest):

Island Ports' Sustainability Study, Overview and Scrutiny,  
 Floor 4, County Hall, Newport, Isle of Wight PO30 1UD

02 | 07

# Isle of Wight Connexions news

information, advice,  
guidance and support for  
young people, parents,  
carers and employers



## Changes to Connexions in March

Connexions has been experiencing that sinking feeling - literally! The first floor of the Connexions Centre in Newport has sunk by over 6 inches in places and urgent structural repairs are needed. This means that the High Street Connexions Centre will have to close from 5 March - 22 April, 2007.

The front of the Connexions Centre will be closed for emergency repairs but staff plan to open the back of the building, which can be reached by the County Press pedestrian access on Pyle Street.

"Not only will it be business as usual from the back of the building but we will be running an amazing competition for all of those calling at the Connexions Centre between 5 March and 21 April" said Andrew Preskey, Connexions Manager. He was not giving much away about the competition except to say that young people would receive one entry for every week they called in and the prize is the biggest ever offered by Connexions on the Isle of Wight. To find out more, why not visit the Connexions Centre?

Services to young people in schools and college and those with local training providers won't be affected. Outreach services to young people in The Foyer and Housing Association hostels will also continue as usual.

## Futures for young people

The Island's on-line 14-19 Area Prospectus was launched in December 2006. The site, [www.futures4me.com/iw](http://www.futures4me.com/iw), enables young people to view courses that are offered by a number of the Island's educational establishments.



Using the site, young people can search for subjects and start to plan their career pathway. Progression routes are mapped out and links to our local higher education establishments will soon be included. Useful information about open days can be accessed and the site also includes links to Apprenticeships Online and Aimhigher.

Additional information on travel and transport across the Island is also available. Information is being added all the time, so check the futures4me site regularly.

[www.futures4me.com/iw](http://www.futures4me.com/iw)



**Newport Connexions Centre**  
**29 High Street, Newport, PO30 1SS**

Telephone: **01983 525927** Email: **infoiow@connexions-southcentral.org**

Opening Times: **9.30am-4.30pm Mon to Wed** **9.30am-6.00pm Thu** **9.30am-4.00pm Fri** **10.00am-1.00pm Sat**

# 14-19 Learner Entitlement

By now, most of the Island's students aged 14 to 19 should have received a copy of the new 14-19 Learner Entitlement from their place of learning. This explains what a young person can expect from their school, college or work based learning provider to help them achieve their potential. The Learner Entitlement also explains what students can do to ensure their chosen learning route is successful.

Young people on the Isle of Wight should expect:

- ⊙ a positive and inspiring learning environment;
- ⊙ an enjoyable and motivating learning experience;
- ⊙ a range of high quality resources;
- ⊙ a broad and flexible curriculum open to all learners;
- ⊙ positive progression from one level to the next; and
- ⊙ success on their chosen course

To view a full copy of the 14 -19 Learner Entitlement  
[http://eduwight.iow.gov.uk/curriculum/1419\\_learning/](http://eduwight.iow.gov.uk/curriculum/1419_learning/)

The Isle of Wight Council, the Learning and Skills Council and Connexions are keen to know what young people and their parents or carers think of the 14 -19 Learner Entitlement.

- ⊙ Have you seen a copy?
- ⊙ Are you satisfied with the learning or training your child receives?
- ⊙ Does your child need any extra support?

If you are a young person aged between 14 and 19 and would like to comment on the Learner Entitlement, visit  
[www.connexions-southcentral.org](http://www.connexions-southcentral.org)

If you are a parent or carer of a young person please contact Andrew Preskey, Connexions Manager with your comments.  
 Email: **andrewpreskey@connexions-southcentral.org**



## What do you think?

South Central Connexions working in partnership with:



Leading learning and skills

# Star ratings for food hygiene

This month a new star rating scheme is to be launched on the Island, telling us about food hygiene standards in Island food businesses...

"We want to encourage the best possible hygiene standards in food businesses throughout the Island."

*Councillor Barry Abraham, cabinet member for safer communities*



IF YOU are using a restaurant, café or other business that sells food or provides meals, you may want to know how good their food hygiene is.

On 21 March the council's environmental health department is launching a scheme to help you do just that.

For the first time the information gathered by the department will be published, telling you how good or bad conditions are, and providing food businesses with certificates showing their score on a scale of zero to five.

The environmental health team regulates food safety in the Island's 2,000 registered food businesses, with the aim of protecting public health and ensuring compliance with legal standards.

So far this has been achieved through methods including targeted inspections, educational campaigns and in the most serious cases, formal action. But the information they gather has not been made public until now.

With the new scheme the star ratings will be available for the public to view at:

[www.iwight.com/scoresonthedoors](http://www.iwight.com/scoresonthedoors)

The 1,500 catering businesses such as restaurants, cafés, pubs, hotels and takeaways will also be asked to display a certificate prominently on the front of the premises.

Warren Haynes, environmental health manager, said: "The aims of the scheme are to provide the public with greater information concerning food hygiene in food establishments; and provide food businesses with a reputational reward for those who effectively manage food hygiene. It will also act as an incentive to those businesses where improvements can be made. These incentives will complement our existing approach which combines education with enforcement action.

"The scheme will also improve our communications with the public on the work we do. It will provide easier access to the information they are now

"I feel it will probably cause a shake-up, but it is a good thing the customer has this information when making a decision about where to eat."

*Stephen Wyatt, French Franks*

"Great idea; hygiene is a part and parcel of the food industry in producing quality food. This scheme will mean that this is recognised."

*Andy Gustar, Hamiltons*

"I think the public should be aware, in particular with regards to food hygiene, because as a customer you have no idea of the hygiene conditions in the kitchen."

*Mark Baldwin, Mojacs*

entitled to via Freedom of Information requests."

The new Food Hygiene Rating Scheme has been developed following research into similar so called *Scores on the Doors* schemes in countries including Denmark, as well as parts of the USA and Canada.

Food hygiene standards, and compliance with food law, have been shown to improve after the bringing in of these schemes. As a result there have been decreases in hospital admissions due to food borne illnesses, and the schemes have been welcomed by the public and food industry as a way of improving standards.

In the UK, since the introduction of the Freedom of Information Act, there have been more public requests for information about how food hygiene is managed in food businesses. In response to this, many councils have chosen to publish this information. The Food Standards Agency is also piloting schemes in the Midlands and across London (from May).

Businesses on the mainland where *Scores on the Doors* schemes already operate have also used their food hygiene rating to promote their business. With this in mind, the council's website at [iwight.com](http://iwight.com) is offering businesses the chance to include a photograph of the front of their business and a map of their location. Businesses wishing to have such a photograph included should email it to [eh@iow.gov.uk](mailto:eh@iow.gov.uk)

## Developing the scheme

The scheme on the Island has been developed based on consultation with food businesses and the public.

The idea was welcomed by both groups:

- 87 per cent of business operators thought the public should have access to the information;
- 79 per cent of the public stated they wanted the information.

The scheme favoured by both groups was a zero to five star



scheme, with the information carried on a website and at the premises.

The star rating will be based on a combined score for the business:

- the level of legal compliance with food hygiene and safety practices;
- the level of legal compliance for the structure of the premises;
- confidence in management/control systems.

A safeguard has also been built into the Island scheme, so if a business feels aggrieved at the score it receives, there is an appeal mechanism.

• Environmental health welcomes the views of business and the public on what its priorities should be for its 2007/2008 service plan. Please visit the website at [www.iwight.com/living\\_here/environment/environmental\\_health](http://www.iwight.com/living_here/environment/environmental_health) to complete a short online survey questionnaire, or contact environmental health (tel: 823000) to request a copy.

# What happens

Are you clear what happens to your rubbish after it is collected from your home or when you have taken it to the tip? Sarah Buttress, the council's recycling officer, explains...

FOR THE past nine years the council has worked in partnership with Island Waste Services to deliver a range of initiatives to recycle, compost, recover and minimise our domestic waste.

We are responsible for several recycling schemes:

- 'Bring' recycling sites.
- Kitchen food waste collection.
- Garden waste collection.
- Black box kerbside collection.

So what happens to your black bags of waste after they are dutifully collected every week? And how much recycling and reuse goes on once the black bags have gone?

On the Island, householders are not issued with numerous colourful containers and a request to correctly separate their recyclable material. It is all done for them.

All the refuse collected is transported

to a Resource Recovery Facility (RRF) in Forest Road, Newport, where the bags are mechanically separated and the contents processed.

Waste from all over the Island is then processed to create fuel – it is not all landfilled.

Assuming every household puts out only one black bag, there would be approximately 66,000 bags of waste collected every week or 3.5 million bags a year.

The collected waste undergoes several mechanical treatments at the RRF, and the recyclable materials such as Tetrapaks, cardboard, plastics and paper items (envelopes, junk mail, telephone directories, leaflets etc) together with any remaining combustible fragments, are converted into fuel.

Ferrous and non-ferrous metals, such as

"We are determined the Island will lead the way in recycling and waste reduction over the coming years."

*Ian Ward, cabinet member for environment and transport*

aluminium and steel cans, including aerosols, are extracted to be recycled and the organic component of the waste is composted. Only a small proportion of the refuse that enters the RRF is actually sent to landfill and this consists mostly of textiles and disposable nappies.

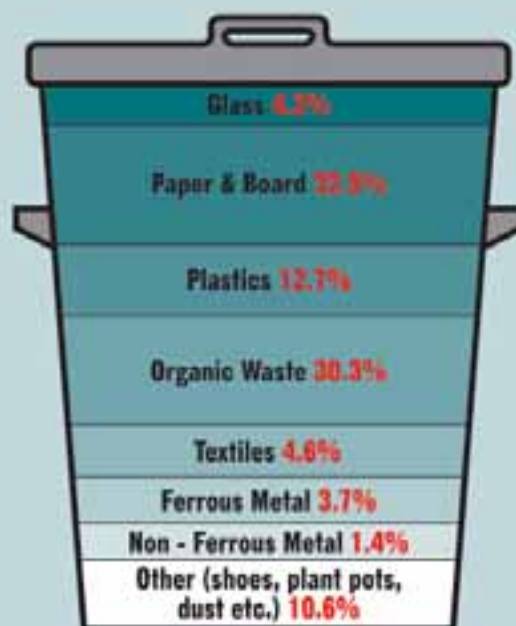
The figures also show the importance of separating your bottles and jars out from your waste using the black box kerbside scheme. If every black bag collected contained one glass jar then 66,000 jars would be land-filled each week or 3.5 million every year. If glass is not put out for collection using the black box scheme then unfortunately it is landfilled as there are no mechanisms to extract the glass fragments.

Through various opt-in schemes householders can play an active part and recycle the following materials:

- **'Bring' bank sites** Colour separated glass, textiles and aluminium cans.
- **Kitchen food waste** Uncooked and cooked food, teabags and coffee grounds, fruit, vegetables, peelings and eggshells. We provide a collection caddy for food waste. This is collected on a weekly basis at the same time as normal refuse.
- **Green garden waste** Grass cuttings, hedge trimmings, leaves, cut flowers but no soil or rubble. Garden waste is not collected as part of the normal collection service. Green sacks have to be bought separately, costing £1.20 each and are collected on a weekly basis at the same time as normal refuse. Green sacks

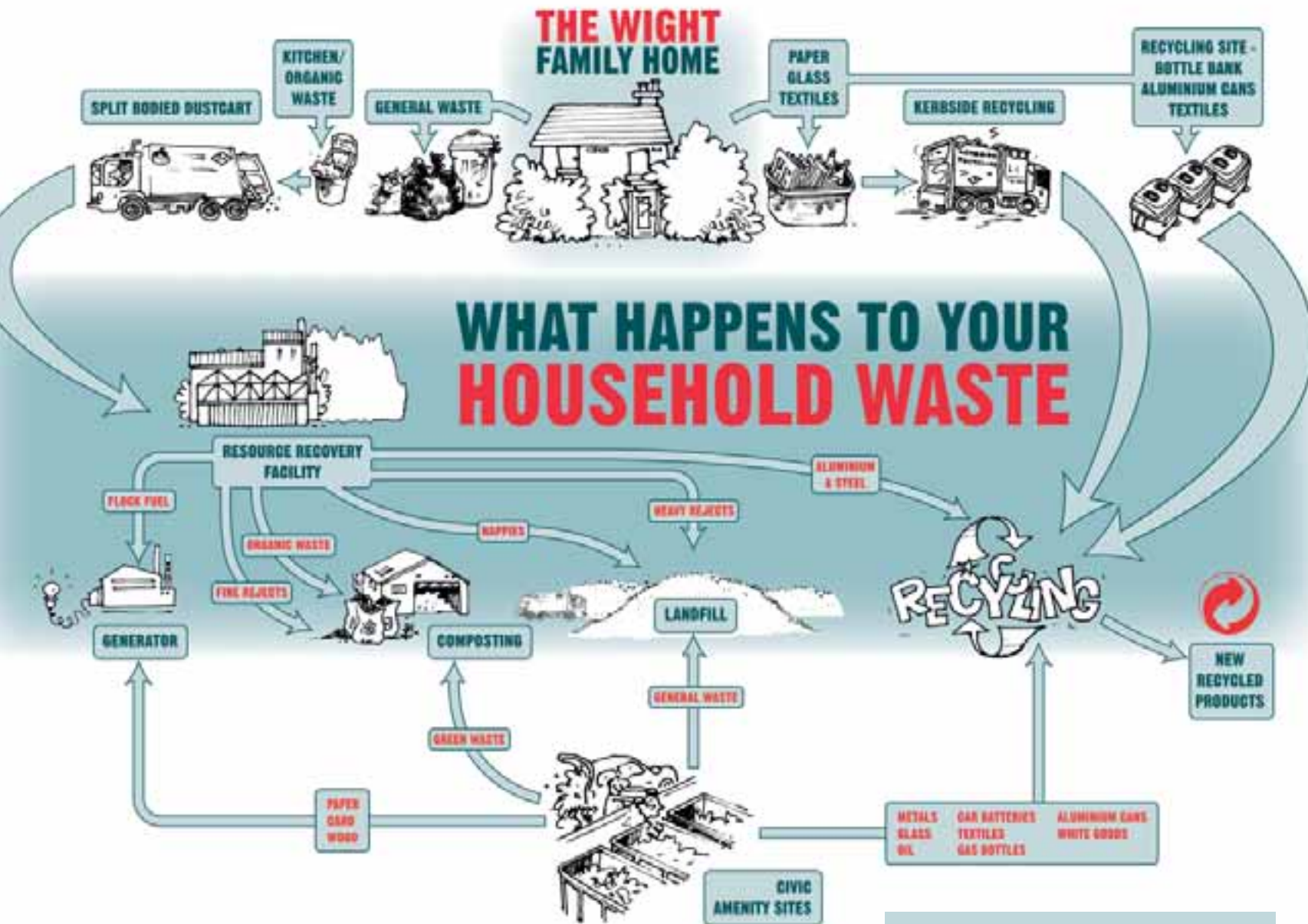
## WHATS IN YOUR DUSTBIN EACH WEEK?

Average composition of dustbin refuse on the Isle of Wight





# to our rubbish?



bought from supermarkets and other shops are not the correct sacks, and garden waste placed out for collection in such sacks will not be collected.

• **Black box kerbside collection**

Newspapers and stapled magazines, textiles (bagged), paired shoes and glass bottles and jars. Collected fortnightly from the kerbside boundary of your property, on the same day

as the normal refuse collection.

• **Household waste recycling centres (civic amenity sites)** There are three sites on the Island where householders can take and recycle items that are not collected with their normal weekly refuse collection (Lynnbottom near Newport; Forest Road, Newport; and Afton Road, Freshwater).

**More information**

Further details about how your waste is recycled can be obtained from:

- The Isle of Wight Council, tel: 821000, website: [www.iwight.com](http://www.iwight.com)
- Island Waste Services, tel: 821234, website: [www.islandwaste.co.uk](http://www.islandwaste.co.uk)





Up to 200 experts from 30 countries are expected to attend a four-day conference at Ventnor in May, looking at landslides and climate change.

The conference, hosted by the council's centre for the coastal environment, is part of a discussion programme arising from a three-year study into the impacts of climate change on Europe's coastlines.

The results of the £1.2 million Response project (responding to the risks from climate change) were launched in Brussels in December.

The council's centre for the coastal environment has led the study, which has been funded by the European Union's LIFE Environment Programme (L'Instrument Financier de L'Environnement) with partners in the UK, France, Italy and Poland.

Dr Robin McInnes, the council's coastal manager and the project director, said: "The Response project is attracting significant interest from the international scientific community by providing a methodology to identify and address climate change risks on the coast."

• For further information visit [www.coastalwight.gov.uk](http://www.coastalwight.gov.uk)

## *Top coastal experts to attend Island conference*

## Seasonal wildlife hint for the garden

In the next few weeks, frogs, toads and newts will be busy laying eggs. Garden ponds may seem to be overflowing with spawn but the offspring face many hazards – predators, harsh conditions such as extremes of temperature, drying up of ponds and disease and there will be large losses. By laying many eggs, at least some will survive to breed in future years.

It is not a good idea to transfer spawn to another pond. In doing so you may cause disease to spread, and if the eggs have not been laid there already, it may be that the conditions are not suitable.





## Nature notes

Though our native deciduous trees are still bare of leaves they are nonetheless dramatic in the landscape, their crowns silhouetted against the sky. Their winter outlines are distinctive: alder has a delicate triangular shape; oak has a rounded crown, and ash has lower branches growing upwards in graceful curves. Clues from the bark, twigs and buds help to identify trees: oak bark is deeply fissured and its light brown oval buds are crowded at the end of the twig. Beech has smooth grey bark, and copper-coloured spindle shaped buds along alternate sides of the twig. Ash buds are velvety in texture, black in colour and, except for the bud at the end of the twig, they are in pairs.



It is a good time of year to spot a red squirrel. They are active all through the year, and most likely to be seen early in the morning or late afternoon. In woodland, they seek out pine cones high up in the tree canopy. Look for scales falling from the cones and listen for rustling above you – these are good signs that a squirrel is about.

Along coasts exposed to the prevailing salt-laden south westerly winds, scrub and trees have been sculpted by the wind over time to produce a lop-sided appearance. The leaves on the windward side lose much more water than those in the lee, so growth is very much less on this side. Coastal scrub is an important shelter and landfall for migrating birds that will soon be on our shores as they make their way to their breeding grounds.

*Anne Marston, assistant ecology officer*

## Tree planting on the tip



ABOVE AND LEFT Pupils from Downside Middle School and members of Pan Conservation Group plant trees at Lynnbottum tip

Pupils from Downside Middle School at Newport and members of the Pan Conservation Group have planted 33 native trees on a site that is slowly being returned to woodland at Lynnbottum tip near Newport.

Guided by Island Waste Services and Pan community ranger, Richard Temple, a mixture of birch, field maple, oak, and rowan were added to the area behind the compost recycling facility.

The pupils and conservation group volunteers learnt the value of planting trees, and providing vital habitat and food sources for all kinds of wildlife, including birds, insects and red squirrels.

John Norledge, a member of the conservation group, said: "Although it is only a small contribution, it was good to be able to help create a valuable wildlife haven on an area previously used to dispose of the Island's rubbish."

The trees were provided by Aluminium Packaging Recycling Organisation as part of a project called Trees for the UK, Trees for Africa.



## Looking at the risks of port cities

The council's centre for the coastal environment at Ventnor recently hosted a project meeting looking at the environmental and economic effects of port cities.

The IMAPS (Integrated Management of Port Cities) project meeting attracted more than 20 participants from partner regions in Italy, France, Romania and Spain.

The project is co-financed by the European Union *Interreg* programme and is designed to assist the management of technological risks like oil and chemical spills around coastlines such as the Island's.

The project also looks at the implications of industrial and shipping risks, the coastal environment, European and national regulations, industry, tourism, shipping and traditional fisheries.

The council's centre for the coastal environment is a partner in IMAPS, and discussions at the meeting included assessing environmental and physical risks and economic benefits to the Solent and the Island (associated with Fawley and the port cities of Southampton and Portsmouth).

The final results of the project will be launched in late 2007.

• For more information please contact Claire Marriott, senior coastal scientist, tel: 857220, or visit [www.imaps-interreg.net](http://www.imaps-interreg.net)

## ACTIVITIES

### Craft Workshops

(21 February – 28 March)  
Workshops at WI House, 42 Carisbrooke Road, Newport, booking in advance essential at Wightcat Crafts (tel: 527525), Parchment Craft Club (21 Mar and 18 Apr, 1.30pm to 4.30pm), Cardmaking Workshop (24 Mar and 28 Apr, 10.30am to 1pm), Beginners' Parchment Class (28 Mar and 25 Apr, 1.30pm to 4pm), Regular Scrapbook Club (10 Mar and 21 Apr, 11am to 3.30pm).

### Digital Landscape Workshop

(3 March)  
A photographic workshop with Chris Avery, a follow-on from a beginners' workshop, 10am to 4pm, cost £5, at Dimbola Lodge Museum (open Tuesdays to Sundays 10am to 5pm), Freshwater Bay, tel: 756814.

### Weekend Workshop

(21-22 April)  
Brian Sharland from UK Landscape takes a weekend photographic workshop, focusing on interpretive landscape, 10am to 4pm each day, £100 for two days, at Dimbola Lodge Museum (open Tuesdays to Sundays 10am to 5pm), Freshwater Bay, tel: 756814.

### St George's Day Celebrations

(20-22 April)  
Celebrations organised by Rotary Club of Cowes at Northwood House, Cowes, featuring on Friday 20 Apr an international standard concert, on Saturday 21 Apr a St George's Day

procession, fancy dress competition, re-enactments, children's country dancing, art competition for schools, and on Sunday 22 Apr a classic car and bike display and antique and collectables fair.

## EXHIBITIONS

### Island to Island, Inspired Portraits

(19 January – 11 March)  
Images by six photographers with very different approaches, Dimbola Lodge Museum (open Tuesdays to Sundays 10am to 5pm), Freshwater Bay, tel: 756814.

### Stephen Wake, Exhilaration of Speed and Moments of Serenity

(26 January – 18 March)  
From racing cars and the thrill of speed to the serenity of butterflies, caterpillars and birds, Dimbola Lodge Museum (open Tuesdays to Sundays 10am to 5pm), Freshwater Bay, tel: 756814.

### Baxter Bradford, Coasting

(16 March – 6 May)  
Images depicting the beauty, power and moods of our coast, Dimbola Lodge Museum (open Tuesdays to Sundays 10am to 5pm), Freshwater Bay, tel: 756814.

### Fulvio Rubesa, Aequilibrium

(23 March – 29 April)  
Images from Fulvio Rubesa's long-standing interest in working with dancers and choreographers, Dimbola Lodge Museum (open Tuesdays to Sundays 10am to 5pm), Freshwater Bay, tel: 756814.



**Baxter Bradford, Coasting**  
An exhibition of photographs showing the beauty, power and moods of our coast, at Dimbola Lodge from 16 March to 6 May

### Isle of Wight Art Club spring exhibition

(17-28 April)  
Spring exhibition at Sts Thomas Church, Newport, 10am to 4pm.

## MUSIC

### Tritone Singers Spring Concert

(3 March)  
A concert featuring pieces by Gerald Finzi, Aaron Copland and Samuel Barber, as well as part songs, madrigals and a selection of European sacred music, at St Catherine's Church, Ventnor, 7.30pm, tickets £5 (children free) available on the door.

### Spring Blues 2007

(17 March)  
Annual Spring Blues Festival starring Eugene "Hideaway" Bridges, The Dance Preachers (featuring JC and Angelina Grimshaw

with Paul Armfield), and more acts to be announced, at Ventnor Winter Gardens, 7.30pm, for tickets contact the box office on 857581.

## SPORT

### Isle of Wight Grand National and Ashey Scurry

(25 March)  
Informal race meeting with five-plus races, starting with ponies and culminating with the grand national; licensed bar, refreshments and

sweepstake, run in conjunction with the Isle of Wight Steam Railway, at West Ashey Farm, gates open 10.30am, first race 12 noon.

## TALKS

### An Evening with Julian Richards, Meeting the Ancestors - and some vikings

(3 March)  
An evening with Julian Richards of tv's *Meet the Ancestors*, presented by the Isle of Wight Natural History

and Archaeology Society, at Medina Theatre, Newport, 7.30pm, tickets £5, children £2, available from the box office, tel: 527020.

### The Huguenots - the original refugees

(14 March)  
A talk by Jane le Cluse, council member of the Huguenot Society, to the Isle of Wight Branch of the Historical Association, at the Parish Centre, Newport, 7.30pm, contact Terry Blunden, tel: 524410.

To allow the council to bring you details of its budget for 2007/2008 the publication date of this issue was changed from 16 February to 2 March. We apologise to those who sent information for events occurring between those dates, which we have been unable to include.

### Future issues:

Issue date	Listings period covered	Deadline for submission
20 April	20 April to 1 June	24 March
18 May	18 May to 29 June	23 April
15 June	15 June to 3 August	19 May
20 July	20 July to 31 August	23 June



**TALKS (cont)****The Wreck of the Irex**

(30 March)  
Shore Women and Friends present an illustrated talk on the Irex, which was wrecked off Scratchell's Bay in January 1890, to include poems, contemporary accounts, an exhibition of artifacts and a shipwreck supper, at Dimbola Lodge Museum, Freshwater Bay, tel: 756814, doors open 6.45pm, tickets must be booked/purchased in advance.

**Early Ryde to 1840**

(14 April)  
A talk by Roy Brinton at the Ryde Social Heritage Group quarterly meeting, members free, others £2 on the door, at George Street Centre, Ryde, 10.30am to 12.30pm.

**Sulgrave Manor, Northamptonshire and the Washington family in Britain**

(19 April)  
An illustrated talk in costume by Martin Sirot-Smith, director



**Circus Berzercus**  
Clowning, juggling, unicycling and magic at Totland Church Hall on 22 March

emeritus, as Lawrence Washington, the builder of Sulgrave Manor in 1539, to the Isle of Wight Branch of the Historical Association, at Nodehill Middle School, Newport, 7.30pm, contact Terry Blunden, tel: 524410.

**THEATRE**

**Abigail's Party**  
(1-3, 8-10 March)  
Cowes Amateur Operatic and Dramatic

Society present Mike Leigh's play, Trinity Theatre, Cowes, 7.30pm.

**Circus Berzercus**

(22 March)  
Chaotic clowning, dazzling juggling, unicycling, magic and audience participation, this family show marks the re-launch of the Arts Away touring scheme, Totland Church Hall, Totland, 7.30pm, tickets £5, children £3, tel: 823833.

**All In Good Time**

(28-31 March, 4-7 April)  
By Bill Naughton, a humorous tale of the perils that beset newlyweds who set up home with an insensitive parent, Apollo Theatre, Newport, all seats £6, box office tel: 527267.

**Anything Goes**

(12-14, 19-21 April)  
Cowes Amateur Operatic and Dramatic Society present the Cole Porter musical,

Trinity Theatre, Cowes, 7.30pm, tickets £5 and £6, box office tel: 295229.

**Best of British**

(18-21 April)  
Curtain Up Amateur Dramatic Society

present an all-British revue featuring and honouring songs, singers and comedy sketches from the last 80 years, Memorial Hall, Freshwater, 7.30pm, tel: 752956.

**Don't forget...**

Due to space restrictions we are usually unable to list events that repeat on an on-going weekly or monthly basis – however, if your activity starts during our listings period we can put the date of the first session and then state how many weeks/months it runs for.

**Trailers**

These listings are provided free, as a public information service. Details must be submitted either by:

**filling out this form, or emailing your details to [oneisland@iow.gov.uk](mailto:oneisland@iow.gov.uk)**

Please conform to the format shown. Entries are included at the editorial team's discretion.

**Deadline for the next issue: 24 March.**

Title of event/activity:

---

Date:

---

Brief description:

---



---



---

Venue:

---

Time:

---

Contact name:

---

Telephone:

---

**Please return to:**

**Trailers, One Island, Publications Unit, County Hall, Newport, Isle of Wight PO30 1UD**  
or email to [oneisland@iow.gov.uk](mailto:oneisland@iow.gov.uk) no later than 24 March 2007

THE ISLAND'S new health organisation – the Isle of Wight NHS Primary Care Trust – is working actively with the council on plans to improve the health and lifestyles of Island residents.

In the coming months the trust will be asking the views of patients and the public to help develop this vision, ensuring it is both challenging and realistic.

Major reform of the NHS is already underway on the Island, with patients benefiting from reduced waiting times, a choice of where and when they receive their treatment, and being able to see their GP within 48 hours.

Over the coming year, the Island's health service will continue to work towards faster access for patients, and where appropriate, providing services closer to home.

The opening of the new chemotherapy unit and the renal dialysis unit at St Mary's Hospital, Newport last year are two measures which have enabled more patients to be treated on the Island instead of the mainland.

### Healthy living

Improving the health of the population is high on the agenda for the NHS and the council. This includes encouraging people to change their lifestyles by helping them to stop smoking, improve their diet and nutrition and increase their exercise. Encouraging and supporting sensible drinking, improving sexual health and improving mental health are other key elements of health improvement.

### Asking your views

The trust believes that patients and users should have a greater say in how services are designed and run. It is committed to using every opportunity to involve and consult on service changes and improvements to ensure they are designed to meet patients' needs.

### Ambulance service

The Island has a first class ambulance service – as well as being the best in England in recent government ratings, it is also one of the most innovative. The service was one of the first in the country to introduce trained emergency drivers for front line ambulances. This frees up paramedics to treat patients and ensures the best medical care is given in the vehicles. The trained emergency drivers also have skills in assisting paramedics.

### First responders are lifesavers

Another example of innovation, starting in February, is the First Responder scheme, which has been expanded to include the fire service in Freshwater and Yarmouth.

# Major steps towards healthier lives

*Latest news from the NHS on the Island...*



This means if you are unfortunate enough to have a heart attack, it could be that a member of the fire service reaches you before the front line ambulance arrives. They will be fully trained and able to administer life saving techniques in those critical first few moments.

### Choose and Book

Advances in technology are helping to update systems and services – the *Choose and Book* system which has been successfully implemented on the Island is an example of this.

*Choose and Book* allows patients needing a referral to hospital to choose and book the time and date of their initial appointment – and where they want to be seen from a choice of hospitals or clinics.

Before *Choose and Book* was introduced, anyone needing a hospital appointment

would have to wait for their GP to write a letter to the hospital, which would then allocate a date. This could take several weeks and the date offered may or may not have been suitable for the patient.

With *Choose and Book*, local people are able to book straight away with their GP or practice staff (or later via the internet or a dedicated appointments helpline) saving weeks of worry waiting for an appointment by post.

Ed Macalister-Smith, chief executive of the Island's NHS, said: "Our Island NHS staff have done wonders over the last few months to ensure the *Choose and Book* service is available in our surgeries and at St Mary's – it's already helping to deliver a much improved local service to those patients requiring hospital appointments."

• For more information on your local NHS you can log on to [www.iow.nhs.uk](http://www.iow.nhs.uk)