



**NITON &
WHITWELL
PARISH
PLAN**



**MARCH
2004**

 **The
Countryside
Agency**

CONTENTS[Ⓞ]

1.	FORWARD.....	1
2.	HISTORICAL BACKGROUND.....	3
	Niton.....	3
	Whitwell.....	3
3.	NITON AND WHITWELL TODAY.....	4
	Road Network.....	4
	Local Distinctiveness.....	4
	Wildlife.....	5
	Facilities.....	6
4.	RECOMMENDATIONS FOR FURTHER ACTION.....	7
	Vision Statement.....	7
5.	PLANNING POLICY AND LAND USE.....	8
6.	TRAFFIC AND PARKING.....	10
7.	PUBLIC/COMMUNITY TRANSPORT SERVICES.....	12
8.	HOUSING SITUATION.....	13
9.	RECREATION, SPORT AND LEISURE FACILITIES.....	14
10.	CRIME, SECURITY, POLICING & NEIGHBOURHOOD WATCH.....	16
11.	COMMERCIAL ENTERPRISES.....	17
12.	HEALTH CENTRE.....	18
13.	NITON PRIMARY SCHOOL.....	19
14.	COMMUNICATIONS.....	20
15.	ARTS AND CRAFTS.....	21
16.	ISLE OF WIGHT COUNCIL SERVICES.....	22
	Road Network & Maintenance.....	22
	Church Road Niton.....	23
	Church Path Whitwell.....	24
	Footpaths.....	24
	Responsibility for Local Services.....	24
17.	CONCLUSIONS.....	25
	APPENDIX 1 Steering Group Members.....	27
	APPENDIX 2 Niton & Whitwell Historic Landscape Character Assessment.....	29
	APPENDIX 3 Questionnaire & Responses.....	33
	Publicity Poster.....	33
	Questionnaire.....	34
	Analysis of Responses.....	35
	ANNEX THE ACTION PLAN.....	39

[Ⓞ] This document has been produced and published locally.

1. FORWARD

During the autumn of 2002 officers from the Rural Community Council (RCC) in Newport gave two presentations in the Niton Village Hall to members of the Niton and Whitwell Parish Council and to interested residents of the two villages. In these presentations they outlined the rationale behind the production of Parish Plans, explained the funding sources and the processes to be undertaken should it be decided to go ahead. Having the assurance of a viable Steering Group (SG) and having considered the advantages for the future development of the villages through the enabling use of a Parish Plan, the Parish Council decided to proceed as advised by the RCC and the Steering Group was duly constituted with, initially, three Parish Councillors amongst the membership. Names of those residents who comprised the SG are listed at Appendix 1.



The first meeting was convened in the 'meeting room' of the White Lion Public House on 8 January 2003 and attended, as advisers, by the Clerk to the Parish Council, Adrian Jones and the RCC Officer, Steve D'Giacoma who also attended our May 2003 meeting. A SG meeting was held every month during 2003 and the following 'professionals' offered advice to members at these meetings:

Ashley Curzon	Planning Policy Manager IW Council
Tony Flower*	Property Services Manager IW Council
John Metcalfe*	Head of Community Development & Tourism
Mark Andrew*	An independent Website Manager
Andy Morris	Rural Transport Officer IW Council
Martyn Mullins	Assistant Rural Transport Officer
Kevin Burton	Traffic & Transport Service Engineer

* indicates local resident.

Advice has also been sought and received from The National Trust (NT), English Nature (EN), the Area of Outstanding Natural Beauty (AONB) office, Southern Water (SW) and the County Archaeology and Historic Environment Service whose recent Historic Landscape Character Assessment (HLCA) has been included in the Plan at Appendix 2. Design Statements have not been produced for the villages in the past, which is why we have included this HLCA in full and have elaborated on the local distinctiveness of the Parish in Section 3.



Application for a grant was submitted through the Parish Council in January 2003 to the Countryside Agency (CA) and notification of approval was received in March 2003.

As a first step in the process of consultation with residents a list was compiled of all the Clubs, Associations, Churches, Commercial Enterprises, Village Services, etc. in the two villages and 46 letters were sent asking owners/representatives/incumbents:

- What facilities/support services are needed for the future
- What valued local services need to be preserved
- For their ideas on means whereby the traffic and parking situation in the villages might be eased
- For any innovative projects that would benefit the communities

At the same time a 'notice' was placed in the Village Talk column of the IW County Press (CP). Whilst these actions generated some interest and discussion, it was soon clear that our 'profile' needed to be raised. Posters were designed and placed strategically, leaflets were delivered by hand to every household (837) and boxes were placed in shops, Post Offices, Pubs etc for responses from residents. Over the summer/autumn months these were collected regularly and the contents analysed. By the end of November 2003, 171 responses had



been received. A copy of the 'leaflet' and the analysis of the responses are included at Appendix 3. A coffee morning in the Niton Village Hall in September attracted a good attendance and enabled members of the SG to discuss in greater detail matters of concern to local residents. Throughout the year the monthly Parish magazine 'Connections' was used as a means of keeping the community informed of events and progress: 'Connections' is widely distributed in both

villages. Liaison with the Community Partnership Groups and the Business Association was maintained throughout. In January 2004 SG members gave presentations of the Draft Parish Plan to residents in the two Village Halls and subsequently to the Parish Council when confirmation of the acceptability of the structure and content of the Plan to the local community was obtained.

2. HISTORICAL BACKGROUND

Niton

This was certainly a Royal Manor during the eleventh century and is referred to in Domesday Book, but the earliest inhabitants were probably Neolithic (2,500-2,000 BC) from which era fragments of pottery and some worked flints have been found in fields and barrows. The Royal Estate was sold during the seventeenth century to the Mount Edgcumbe family who gradually disposed of their rights to Niton lands. The long succession of wrecks on the southern coast of the Island has been matched by a succession of lighthouses designed to warn seafarers of danger. There is a well-established tradition of smuggling hereabouts.



The Anglican Church is a Saxon foundation upon which the present nave was built: additions and remodelling have taken place during most of the subsequent centuries. Edward Edwards, the originator of the campaign for free libraries, died in 1886 and is buried in the churchyard beneath a fine granite monument.

Whitwell

The village of Whitwell is also mentioned in Domesday Book where the Manor of Whitwell with Westover was said to have been owned by three brothers. It came subsequently into the possession of the Lord of Gatcombe, the family Lisle and later to Worsley of Appuldurcombe. The population in 1632 was 309; by 1781 it had increased to 344. The Anglican Church has a Tudor porch and tower and was originally divided into two chapels, one dedicated to the Blessed Virgin Mary and the other to St Radegund. At that time responsibilities for support and maintenance were divided between the inhabitants of Whitwell (St Mary) and the inhabitants of Gatcombe (St Radegund). During the sixteenth century an archway was made through the dividing wall and the church became one place of worship. From the end of the nineteenth century until 1952 the IOW Central Railway ran through Whitwell, which had its own station. Worsley's History of the IOW (1781) notes that 'the greater part of this parish produces fine corn' and photographs record men and machine threshing corn in Whitwell in 1940.



3. NITON AND WHITWELL TODAY.

The villages are situated on the Southern tip of the Island, boundaries stretching from St Catherine's Down in the West to the settlement of Nettlecombe in the East and Ford Farm in the North, comprising 1300 hectares of mainly agricultural land. The population at the time of the 2001 census was Niton 1142 and Whitwell 578. Of about a thousand dwelling units 9% were vacant and of these 65% were classified as second homes or holiday accommodation.

The area to the West of the main Niton to Newport road is within the Area of Outstanding Natural Beauty (AONB). The National Trust owns and manages the stretch of coastal land from Castlehaven to



Watershoot Bay and English Nature has recently extended the Site of Special Scientific Interest (SSSI) designated coastline. The IW Council's sustainable development policy, as laid down in the Unitary Development Plan (UDP) respects the special nature of the local landscape: Strategic Policy S4 states that the countryside will be protected from inappropriate development and the development envelopes for the two villages outlined on the Proposals Map Sheet 7 reflect this policy.

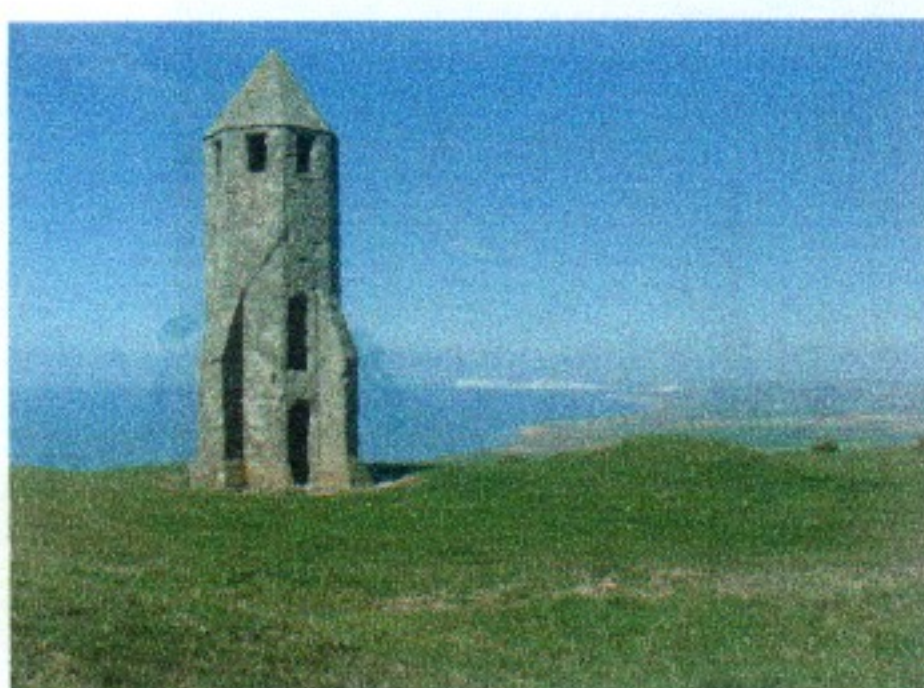
We have noted that in the National Indices of Multiple Deprivation the Parish (which for this index includes Chale) is in the top 18% of those in the UK deprived of access to services.

Road Network

The only A road is the A3055 (Military Road) leading West from Niton towards Blackgang and the West Wight and leading East (Undercliff Drive) towards Ventnor and St Lawrence. The future of the eastern section, where the road is affected by instability at various locations, is under review by the IW Council and its consultants. The road between the villages (Chatfeild Road) has been the subject of frequent representation as to its unsatisfactory condition and is discussed in more detail later in this document. There are also problems with the very heavily used road running North/South through Niton and, to a lesser extent with the parallel road through Whitwell.



Local Distinctiveness



There are a number of distinctive landmarks, St Catherine's lighthouse, the 'Pepper Pot' on the summit of St Catherine's Hill, at 237m the second highest point on the Island, and the Niton Radio masts and buildings to the East and West of Niton village. The East Yar River rises on the outskirts of Niton and flows through both villages on its way across the Island to Brading and Bembridge. There are good examples of stone built houses and walls, thatched roofs and ancient farmsteads in both

villages. A small community of fishermen - mostly for crab and lobster - operates from Castlehaven.

There are areas of historically unstable ground on the Undercliff between Blackgang and St Lawrence where there have been numerous landslides; the 1928 'fall' which irrevocably cut the old Niton/Blackgang road being the most dramatic in recent history. An ambitious and costly scheme aimed at reducing the extent and frequency of such 'slides' through a novel system of land drainage/sinks coupled with rock armour sea defences in Reeth Bay, was started in September 2003 and is due for completion by 2005. An impressive network of footpaths with their associated stiles and kissing gates criss-crosses the Parish.



There are six distinctive and historic red painted water pumps in Whitwell. Both villages are well provided for with ancient and modern churches of various denominations.

Wildlife

The landscape character and habitats have been well described in Appendix 2. Although the two parishes are rich in wildlife, the most characteristic and distinctive species are found along the Undercliff. The rocky outcrops of greensand blocks and the open, exposed landscape surviving around St Catherine's Point provide a habitat which is unique on the Island and it is here that the Glanville Fritillary,^{Note 1} the Island's special butterfly, and a scarce plant, the Wild Liquorice, can be found. Cowslips occur commonly here together with a host of colourful chalk-loving plants. Uncommon lichens and Sea Spleenwort fern are special plants of the rock outcrops, growing here at the easternmost edge of their range in this country. Fulmars and Kestrels nest on the ledges of Gore Cliff.



St Catherine's Point is a popular spot for bird watchers looking out to sea with telescopes to watch the spring and summer passage of sea birds along the Channel. The wooded slopes behind provide the first and last landfall for small migratory birds crossing the Channel.



To the east of St Catherine's Point, the Undercliff is much more wooded, damp and shaded. This is ideal territory for two very local plants found here in quantity – the late flowering Italian Lord's-and-Ladies and the parasitic Ivy Broomrape. The talus slopes at the foot of the cliff provide ideal territory for Badgers, which are common around here and often attracted to gardens for food.

It is hoped that a wildlife area will be established in Whitwell in the near future.

^{Note 1} Photograph courtesy of 'The Isle of Wight Natural History & Archaeological Society'.

Facilities

Most of these are centred in Niton, though they are well patronised by Whitwell residents as well as others living on the South of the Island. There are three Public Houses (two in Niton and one in Whitwell) and a small hotel on the Undercliff. Each village has a garage (petrol only in Whitwell) as well as a Village Hall.

Activities that take place on a regular basis in the Village Halls include Whist, Bowls, Line, Country, Sequence and Scottish Dancing, Yoga and Keep Fit Classes. The three Women's Institutes, Art Club, Camera Club, Undercliff Singers, Pepperpot Players, Wednesday Club and Horticultural Society also meet in the Village Halls.



GPs have a surgery in Niton as does a Veterinary Surgeon. Niton has a thriving Primary School and a Library. A community ICT facility is being provided in a new school building project. Shops include much valued Post Offices/newsagents and general stores in both villages. In addition Niton enjoys the services of a butcher, hardware and books store, pharmacy and a hairdresser. There are football and cricket pitches/clubs, a skateboard 'park' and a small children's playground area in Niton: Whitwell lacks such facilities.

There are Youth Clubs, Scout, Guide, Beaver and Brownie packs available for young people and for the elderly an Abbeyfield Home in Niton. There are several hotels and guesthouses and residents offer bed and breakfast facilities to visitors.

There is no gas main. Overhead (electric) power lines with their associated wooden poles diminish the attractiveness of the villages. But, by any standards, this is a relatively well-served community, which explains why residents very much like living here and wish to retain all of the services they currently enjoy.



4. RECOMMENDATIONS FOR FURTHER ACTION

The following paragraphs and the recommendations for further action (contained in detail in the Action Plan at Annex and indicated in the text margin with the action number) are all based upon the responses to the village-wide questionnaire, opinion offered at the various 'face to face' presentations, more general sharing of views amongst members of the community, advice received from 'professionals' over various contentious issues and the considered and agreed views of members of the Steering Group who have been thoroughly involved in the process of drawing up this Parish Plan for fourteen months.

Vision Statement

"To identify and promote the current and future needs of the community; to enable such needs to be met through dialogue, attraction of funds and development: whilst retaining the local distinctiveness, facilities and sense of community which currently make the villages so popular."



5. PLANNING POLICY AND LAND USE

We have seen and generally welcome the Government's Draft Planning Policy Statement (PPS) 7- Sustainable Development in Rural Areas. We endorse in particular Objective i and Objective iv:

Objective i: "To raise the quality of life and the environment in rural areas through the promotion of:

- thriving, inclusive and sustainable rural communities
- sustainable economic growth and diversification
- good quality, sustainable development that respects local distinctiveness and the intrinsic qualities of the countryside;
- a high level of protection for our most valued landscapes and environmental resources";

Objective iv: "To promote sustainable, diverse and adaptable agriculture sectors where farming achieves high environmental standards, minimising impact on natural resources and contributes both directly and indirectly to rural economic diversity; is itself competitive and profitable; and provides high quality products that the public wants".

There are farms, of varying sizes, around and between the villages which, practising both arable and livestock farming, enhance the landscape. But, with the Government, we recognise that diversification into non-agricultural activities is vital to the continuing viability of many farm enterprises. The conversion of some farm buildings into letting accommodation is a local feature, which we welcome. We also endorse the Government's direction to Planning Authorities that they should facilitate the re-use of farm buildings for small-scale horse enterprises that provide a useful form of farm diversification. The fairly recent erection of horse shelters on land to the North of Niton and between the two villages has not enhanced the landscape. We would recommend against further proliferation of such structures on open farmland.



There are several small-scale chalet/caravan sites at Niton, at Castlehaven, in Boxer's Lane, in the grounds of Westcliff and to the north of the village on high ground at Meadowview. Most of these were 'authorised' in the 1960s. Whilst their presence may bring some holiday trade to the village, they do not enhance the landscape and further such development is not recommended, nor do we support the permanent occupancy or the change of use to permanent/long term dwelling.



There is a sound system for the scrutiny by Parish Councillors of planning applications within the Parish though the availability of Planning Officers to discuss applications in detail has often not been as ready as desired. Frustration when Parish Council recommendations are not accepted/agreed by the IW Council might well be a less frequent occurrence were more time to be given to consideration at earlier stages in the process. There have been representations that planning applications be made available for public scrutiny in the Niton Library. We support this and recommend its early implementation by the IW Council Planning & Library Services.

Action 5a
Planning applications within the Parish to be deposited in Niton Library

Whilst we understand that the Unitary Development Plan will be 'saved' until 2007, it is very important that Strategic Policy S4 (see Section 3) is re-instated in the new Local Development Framework (LDF) through consultation with IW Council Planning Department.

Action 5b
PC input into IW new Planning Regulations Consultations

6. TRAFFIC AND PARKING



Throughout the year of our work on the Parish Plan concerns have been expressed in all forums about the density of traffic through both villages, about the speed of traffic through Whitwell and about the serious shortage of parking space in Niton: the major (crossroads) junction in the centre of Niton adjacent to the 'mini super-market' is an area of particular concern so far as safety of pedestrians is concerned.

In Section 16 we recommend some medium and longer term measures which should reduce the density of traffic in both villages: to 'calm' traffic on the North/South road through Whitwell we recommend 'rumble strips' at all entrances to the village. "Kill your speed" signs may also be effective in the High Street. We have considered various measures to alleviate the traffic 'nuisance' and to increase parking space in Niton. Each has advantages and disadvantages and needs to be considered carefully with regard to parking and safety. But these have found some considerable degree of interest with residents:

Action 6a
Recommendations for traffic flows, calming measures, parking, etc.

- a) Instituting a Left Turn Only at the crossroads junction for traffic entering from Rectory Road and a No Left or Right Turn for traffic entering from Newport Road. A pavement on the west side of Newport Road between the former garage and the crossroads junction would be appreciated by pedestrians but would probably necessitate some form of traffic light system at the cross roads.
- b) Installing a pedestrian crossing in Rectory Road as close to that junction as is allowed by traffic regulations and constructing a short pavement on the North side of the road from the crossing to the crossroads.
- c) Removing/dropping kerbstones to facilitate wheelchair as well as pedestrian crossing at that junction.
- d) Installing a pedestrian crossing at the foot of Institute Hill to enable pedestrians more safely to cross from Butcher to Chemist and vice versa, or introduce traffic calming measures on Institute Hill.
- e) Extending the double yellow lines from School Lane to the brow of Institute Hill. Parked cars on the roadway currently prejudice safety.
- f) Removing (residents only) restrictions on use of the Town End car park, installing a barrier to prevent vehicles other than cars using it and 'Car Park' signposting the facility either side of the Town End/Chatfeild Road junction.

- g) Time limit (say 2 hour from 0800-1800) on parking in the small Youth Club car park and on the Blackgang Road verge opposite the doctors' surgery.
- h) Installing a traffic calming scheme to provide safer pedestrian passage where Rectory Road and Chatfeild Road meet: widen the pavement there and institute a single carriageway for vehicles from the house named "Nutkins" to the house named "Whereaway", with traffic from Chatfeild Road having to give way to traffic coming down Rectory Road.
- i) At the old "Star Inn" junction in Church Street, change the priority in favour of traffic turning right from Blackgang Road.
- j) 'Constructing' authorised parking space on the verge of Newport Road at the entrance to Niton just north of North Butts.
- k) An area of land on the south side of Blackgang Road may come into the possession of the PC. There are covenants on this area but if it became possible for use to be made of it for car parking, this would be of enormous benefit to the community.
- l) Removing/dropping kerbstones to facilitate wheelchair crossing of Whitwell High Street above the garage is also a requirement.

More controversial measures, including a one-way system running North up Newport Road and South (East) down Laceys Lane and a pedestrianisation of the High Street between Norris' Stores and the White Lion have been considered. These suggestions, along with those more generally favoured above, need to be studied by a traffic engineer from the Highways Department of the IW Council to ensure best possible outcomes. Because of the depth of concerns expressed on this subject we place it top of our priorities for action and would expect to see some implementations during 2004.

7. PUBLIC/COMMUNITY TRANSPORT SERVICES

The availability of Public Transport was a matter raised by over 40 respondents. Absence of a local (Niton/Whitwell) bus timetable and the inconvenience of some timings of bus services were concerns expressed: and most would welcome more frequent services.

Recently a local Southern Vectis timetable has been produced and distributed.

Southern Vectis buses do provide services between the villages and from both of them to Ventnor, Shanklin Sandown and Ryde, Newport and Freshwater/Yarmouth. Public Transport officers who advised us explained the extent to which these services were

extended from the purely commercially viable by IW Council 'subsidy' e.g. the Sunday/Bank Holiday and daily afternoon services to Newport. They also told us of a project under consideration for providing a 'rail-link' service from Shanklin to Ventnor and possibly on to Niton/Whitwell, which would be very welcome indeed.

There are several sources of funding available for improvement to rural transport facilities: these include the Countryside Agency's Parish Transport Grant and their Rural Transport Partnership Funding. We learned also about the Community Transport Services provided through Optio and that representations to the Public Transport Officer would be welcome prior to renegotiation of the Council's contract with Southern Vectis in September 2004. The Lift Share Scheme was also explained.

There are ad hoc arrangements for giving lifts to hospital/doctors surgery/ferry terminals, etc. Age concern provides "dial a bus" service and charges 35p per mile. The use of e-mail to request help with transport has advantages. But to take advantage of any of these opportunities further research is required into the needs of the communities and if such are clearly established a co-ordinated plan of action drawn up.

The RCC has recently won a bus contract to provide rural services.



Action 7a
Assessment
of Public/
Community
transport
needs

8. HOUSING SITUATION

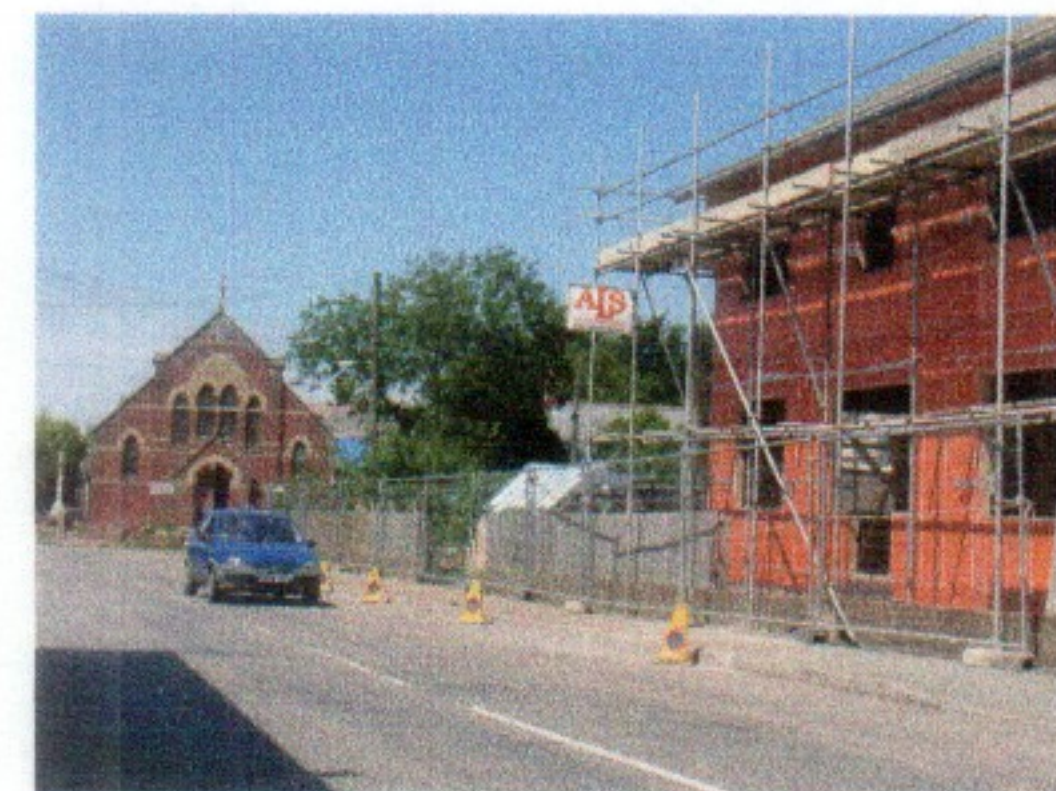


There is a not untypical mixture of ancient and modern buildings in both villages, several of which are 'Listed'. Examples of the former include Nutkins, Herveys and Manor Farm in Niton, Wydcombe and Strathwell Manors and Dean Farm in Whitwell. Both villages have post World War II housing estates - The Glen, Priory Walk and Bannock Road - and there has been and continues to be occasional in-filling within the development envelopes of both villages. It is

Action 8a
Off-street parking for in-fill housing

imperative that an application for in-filling house building should only be allowed where appropriate off street parking is included. This is not currently a planning requirement.

Concern has been expressed about the growing number of second/holiday homes and holiday lets where maintenance standards of property and garden do in some cases detract from the generally good appearance of the villages. There is no pressure from residents for further (ribbon) housing development on the outskirts of the villages. Were the mostly unoccupied properties to be in greater use then the viability of both the commercial enterprises and the Primary School would be enhanced.



Action 8b
Affordable housing rural scheme

Currently none of the houses in either village are part of a Housing Association Scheme. Such a rural scheme to provide affordable housing for local people, where opportunity arises, would be worth considering with the Rural Housing Enabler who works for the RCC.

9. RECREATION, SPORT AND LEISURE FACILITIES

The Parish Council owns land to the South of Allotment Road in Niton upon which cricket is played in the summer. The cricket ground is on a pronounced slope. A skateboard park has quite recently been



constructed there and there are also children's swings at the bottom of the slope. Action has been initiated by a Users' Group to improve these children's facilities. On more gently sloping land, leased by the local farmer at the western end of the village, football is played most weekends: there are three football teams. Both cricket and football clubs have temporary structures, which act as pavilions/changing facilities.

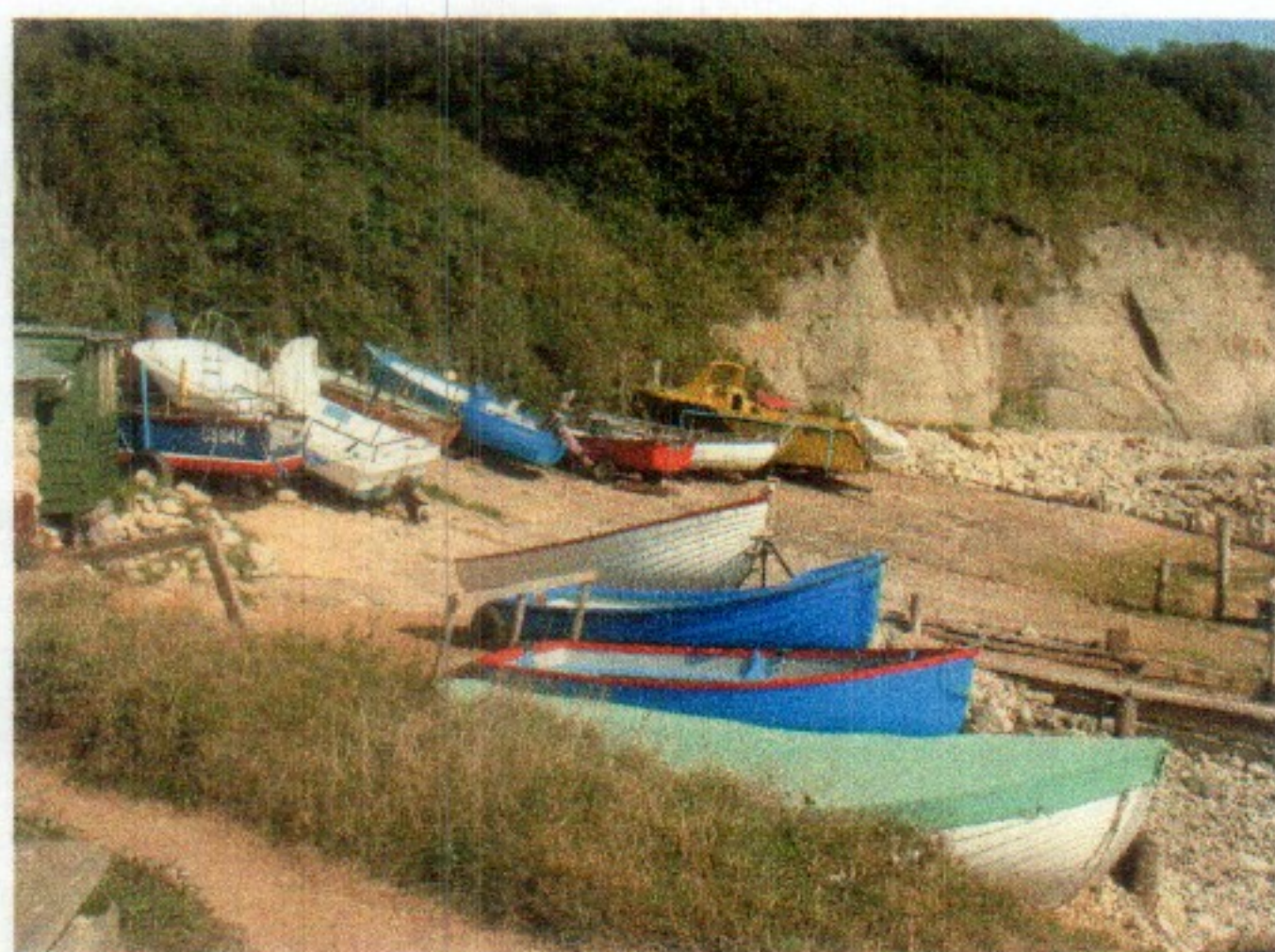
Action 9a
 Improve children's play facilities within the recreation ground

There are no such facilities in Whitwell, although a sum of money is held by the Parish Council, bequeathed some years ago by a local resident specifically to provide recreational facilities for the village children, pending the availability of suitable land. The PC is actively pursuing this.

Action 9b
 Provision of a Whitwell play area

It has been strongly represented to us that the current recreation, sport and leisure facilities are inadequate. Negotiations are underway and preliminary plans have been drawn up which may result in an enlarged area being made available at the Western end of Niton (Springhead) upon which both football and cricket could be played in their respective seasons. Whether any other sports facilities e.g. a tennis court, could be 'fitted in' to the area available remains to be seen; re-siting of the skateboard park on this site would be appreciated by residents of Allotment Road. But a purpose built 'pavilion' which could accommodate needs of the communities not currently met by the Village Halls, as well as of the two sports clubs, would be a major feature of such a development: as would car parking space which, if available to the general public mid-week, could go some considerable way towards alleviating the current serious shortage of parking space in Niton. Future needs/aspirations of the female element of the sporting community should be considered in the planning process. Scouts/Guides/Beavers and Brownies might also find attractive opportunities in such a scheme. The funding for such a project would depend upon major grant aid being forthcoming: possible sources for such funding are suggested in the Action Plan.

Action 9c
 Football/cricket ground enlargement/levelling with pavilion & car park



There is a well-supported surfing club, which operates from Castlehaven. Exciting wind surfing may also be enjoyed from there. The Village Halls are well used for dramatic productions, fundraising events, Scottish dancing, horticultural shows, short mat bowls etc. These activities all contribute to the sense of community which residents value and wish to maintain. The Advent time torchlight/lantern procession around Niton, a photographic record of millennium events housed in St John the Baptist church and recent

exhibitions held there and in Village Halls also help towards this aim: as do the concerts and other activities organised by the Anglican Church congregation.

Niton library, situated at the centre of the village, is much valued. There was a recent local authority plan to relocate it to the Primary School, but this was resisted strongly by the community: a petition was organised and our research has confirmed that feelings still run high on this 'issue'. The PC supports retention of Niton Library at its present site (the old Telephone Exchange).



10. CRIME, SECURITY, POLICING & NEIGHBOURHOOD WATCH

Whilst a number of properties have alarms fitted and there are several local neighbourhood watch schemes, there is no great level of concern about security or crime. However there have been some incidents of vandalism and the occasional evening visit of a policeman/woman would be welcomed as a deterrent in the villages. A mobile police office has recently been visiting both villages once a month. This facility is greatly appreciated and regularising this service with appropriate advanced notice would be welcomed. In the absence of a resident village policeman these regular visits can prove reassuring to residents and are no doubt helpful to the police. So long as car parking facilities remain inadequate (see Section 6) a greater level of monitoring, and law enforcement, of the forbidden/restricted parking areas is needed.

Action 10a
Regularise mobile police visits & law enforcement of parking areas



11. COMMERCIAL ENTERPRISES

As mentioned in Section 3, the enterprises in both villages are highly valued by S. Wight residents and the importance of maintaining their viability is a factor we feel the need to stress. Well over 50% of those consulted commented on this point. Their continued patronage can probably be assumed: but means whereby that patronage can be enlarged need to be established.



As mentioned in Section 8, there are second homes and holiday homes in both villages: a higher level of occupancy would be helpful. Initiatives to encourage tourists are underway: a leaflet to be distributed widely across the Island through Hotels/Guest Houses and Information Offices is being produced through the Green Island awards scheme. This will highlight the attractive network of

footpaths in the S. Wight and 'advertise' local services. Some respondents have regretted the recent passing of a local cafe, which provided a welcome service for a few years: if more tourists come this way a replacement cafe/tea shop might become a profitable enterprise. There is no doubt that increased parking facilities would generate more trade, (see Section 6).

Action 11a
Production & annual re-issue of a Green Island leaflet, including information on a website



12. HEALTH CENTRE



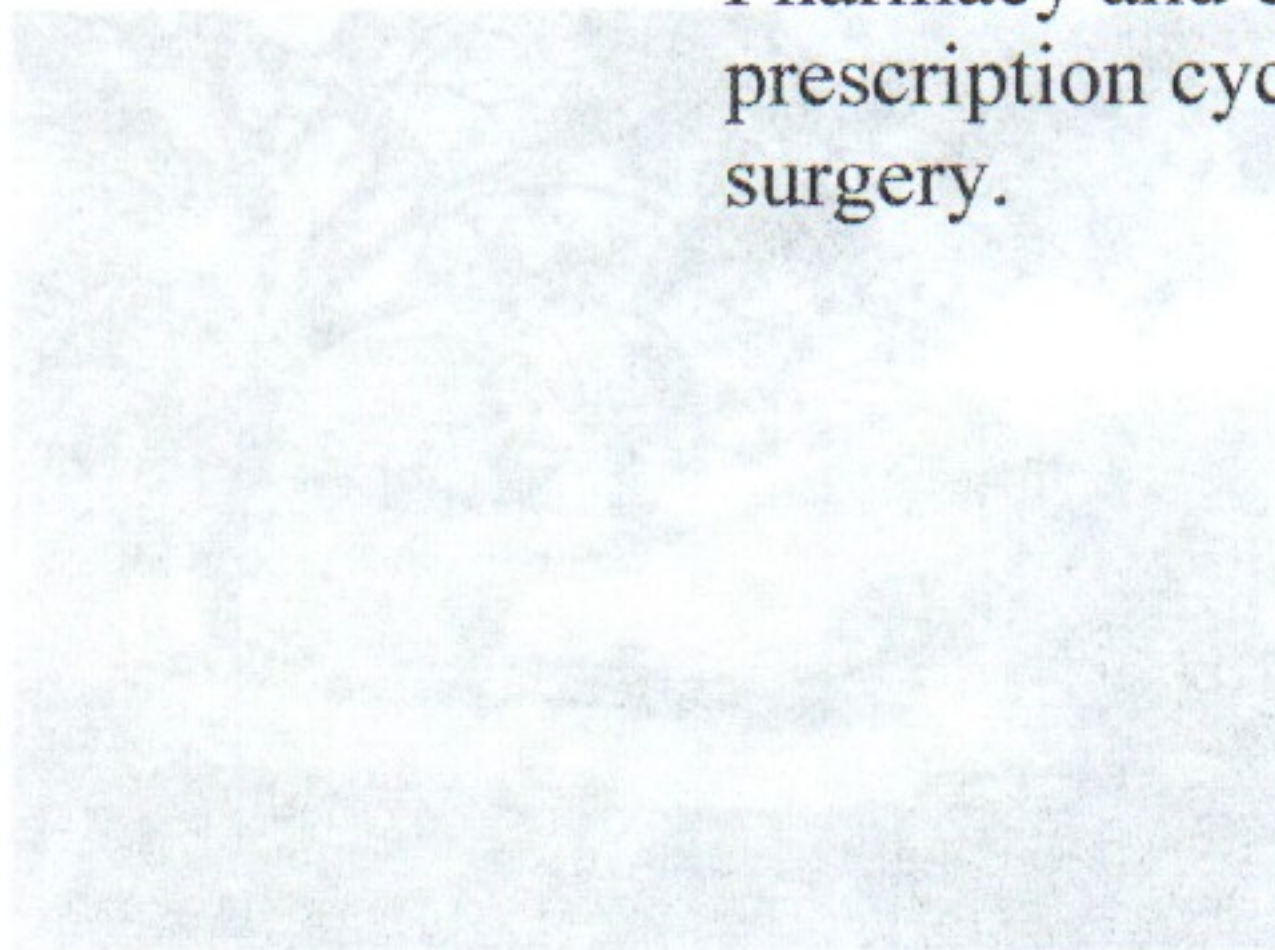
There is a GP's surgery in Niton. This is part of a group practice, which has surgeries also in Godshill and Brighstone.

The Niton site is far from ideal. Situated in the centre of the village on the Blackgang Road where parking is inadequate, the premises were converted from a bungalow residence some 20 years ago. Whilst there is accommodation for two doctor's consulting rooms, a small pharmacy, a practice nurse's

room, a waiting room and a reception desk in the records store, constraints are such that service to the 1900 registered patients inevitably falls short of that provided at modern, purpose built health centres. Were a suitable site to become available for construction of such a Centre, with parking space for patients and staff, and were funding to be forthcoming, such a building could perhaps include equipment for peripatetic dentists and ophthalmologists to practise locally as well as the facilities needed and appropriate for 21st Century medical care of the S. Wight community.

Action 12a
Re-build & relocate the Health Centre

It is important to note that the viability of the much-valued Niton Pharmacy and chemist's shop depends entirely upon the 28-day prescription cycle for those resident within one mile of the Niton surgery.



13. NITON PRIMARY SCHOOL



Situated in School Lane near the centre of the village, the school has been on its present site since 1905. There are currently over 90 pupils drawn mostly from Niton, Whitwell and St Lawrence. The school is one of the Ventnor Cluster of Primary Schools that includes those at Chale, Godshill, Wroxall and Ventnor. Most of the Niton pupils go on to Ventnor Middle School at the end of Year 4: others go to Trinity (CofE) and Archbishop King (RC) Middle Schools in Carisbrooke. There is a privately run

Pre-School on the premises.

Replacement of the temporary building which currently houses the school library, ICT suite and music 'studio' is planned for 2004: the new building will house the library and an ICT facility, in separate 'rooms'. The ICT facility will be available as a community facility out of school hours, as is the whole of the school. Brownies, Niton Tots, the Niton & Whitwell Horticultural Society (for the summer show) and the Parish Council (for meetings) are amongst those taking advantage of this policy. But, as elsewhere in the village, parking space is at a premium. The Friends of Niton School (FONS) are an active organisation, providing a further important link with the community and raising welcome funds. A significant lack is the absence of a 'Breakfast Club' and 'After School Club': with both parents working in many families such facilities would be invaluable.



Action 13a
Niton Primary School
Breakfast/
After School
Clubs



14. COMMUNICATIONS

We have discussed with a local enthusiast the possibility of a Parish website, or alternatively one for each village. Start up money for such a project has been included in the budget for the production of the leaflet (see Section 11). If this were to be assessed as a definite requirement, then 'ownership' of and the source of continuation funding for the website would need to be established. The size of community requirement for Broadband connection is also a factor in this and the timely updating of the website contents needs to be assured. The Best Rural Commuter Training Bus visits the villages on Tuesday mornings.



Traditional means of communication include two local newspapers - the County Press and the South Wight Chronicle, the Parish magazine called "Connections", the facilities of the Niton Library, Village Hall Notice Boards and posters displayed by permission of the owners in local shops. The 'Village Talk' column in the County Press offers a free advertising facility for event organisers. Members of the public are welcome to attend meetings of the Parish Council, held alternate months in Niton and Whitwell, and a few take advantage of this. More attend the Annual Parish Meeting. Well-publicised 'open' Parish Council meetings might generate more interest in the local agenda, say once a quarter. Names of current members of the PC are displayed on notice boards in Niton outside the Library and the Village Hall, and in Whitwell opposite the Church in Kemming Road.

Action 14a
Introduce & publicise quarterly 'open' meetings of the Parish Council

Communication links between Parish Councillors and IW Council are not as good as they should be. The County Councillor, who represents Chale as well as Niton and Whitwell, should be a vital link in the communications chain to and from County Hall. The absence of our Councillor from our community over the past eighteen months has caused many to feel un-represented. She has not been associated with this Parish Plan at any stage.

Action 14b
Improve PC/IWC communication links

15. ARTS AND CRAFTS

There are painting and quilting groups in Niton, which meet on a regular basis. There are several professional artists who live in the villages. There is a kiln and a potter's wheel in an outhouse in the Primary School. Art exhibitions are held from time to time in the Village Halls.

We have been asked to consider whether a Craft Centre might be set up in one of our villages to serve the South Wight community and we have given thought to this suggestion. Such a project would require capital and revenue funding to acquire and equip a suitable site and to manage it. A clear need would have to be established to attract such funding: we have not been able to establish such a need, not least because the Quay Arts Centre in Newport with its associated Jubilee Stores (workshops), does provide Island-wide facilities both for the creation and marketing of works of art. And pupils from our Primary School have exhibited their work in the Young People's Gallery (Learning Curve) at the Quay Arts Centre. Marketing facilities do also exist in the East and West Wight.

The Quay Arts Centre has an Audience Development programme aimed at communities outside the capital town. Artistic members of our community could access such an outreach programme more readily were public transport facilities to be improved (see Section 7).

16. ISLE OF WIGHT COUNCIL SERVICES



The Council contractor for household waste collection calls weekly with a twice monthly doorstep collection of newspaper, glass and cans: this, together with the recycling bins in the White Lion car park in Niton, meets the requirements of residents and obviates the need for the re-cycling centre which was located in the “Townend” car park in Niton and was the cause of annoyance to those living within earshot.

Road sweeping is carried out by vehicle mounted brushing which is efficient on road stretches where vehicles are not parked. Whilst the frequency of this service needs to be increased during the autumn (leaf fall) season, less frequent sweeping would be acceptable at other times: a more sensitive assessment of the requirement and a subsequent re-drawing of the contract detail might save money.

Action 16a
Road sweeping schedule

There are many dog owners/walkers living in the villages: in Niton there is only one ‘dog pooh’ bin: it sometimes overflows: at least one more bin and more frequent emptying is a much stated requirement. Whitwell has no ‘pooh bin’ and one is needed.

Action 16b
Additional ‘Dog pooh’ bins provided in Whitwell & Niton

Other (general) litterbins are frequently emptied and their location is not a source of concern: though swifter replacement of damaged bins is desirable. Sponsorship of bins has been suggested to alleviate costs to the IWC.

Action 16c
Litterbin replacement

The former standards of highway maintenance with regard to cutting back vegetation have deteriorated markedly in the recent past; most particularly along Sandrock Road and Undercliff Drive where the attractive stonewalling is in great need of restoration.

Action 16d
Maintenance of highway stonewalls & vegetation

But the most unsatisfactory element of Council services is in the maintenance of the highways themselves. This has been represented to the Highways Department on numerous occasions by the Parish Council and was raised by very many residents ‘canvassed’ by the Parish Plan SG.

Road Network & Maintenance

For both doubledecker buses and coaches the village of Niton has for many years been on the Explorer/Round the Island route. Formerly the Undercliff Drive has been used by this traffic, thus avoiding Whitwell, but because of recent instability the road has been either closed or open only with width restrictions.



Consequently the use of the Upper Ventnor/Whitwell road and the road between the villages (Chatfeild/Kemming Road) has increased enormously, the surface of these roads has deteriorated and the volume of traffic, much of it large vehicles, passing through the centre of the villages has unnerved and inconvenienced many residents. Plans for traffic routing and parking arrangements within the villages are set out in Section 6: for the road network around the villages we recommend that the Highways Department:

- a) Come swiftly to a conclusion regarding the future of Undercliff Drive
- b) If, with confidence for the future, that road can be restored to its A grade status:
 - i) put the necessary work in hand
 - ii) arrange for the 'directing' of bus & coach traffic along that road, preferably in a clockwise direction only
- c) Whether or not Undercliff Drive can be restored to its A grade status, undertake, as a priority, an upgrading of Chatfeild/Kemming Road, to include a surface water drainage scheme.
- d) As a more permanent/longer term measure, design and, when funding has been secured, construct a by-pass road to the North of both villages to carry the Ventnor/Blackgang/West Wight through traffic.
- e) Upgrade the Niton/Fairways (Newport) Road by other than periodic patching and construct a roundabout/bridge/tunnel at the point where the proposed by-pass would intersect/cross. This road is currently under severe pressure from HGVs delivering materials for the Castlehaven land drainage/sea defences scheme.
- f) Kingates Lane, an alternative connecting road between the two villages, is in dire need of repair.

Action 16e
Road network
recommendations

Church Road Niton

The public toilets in this road are well used both by residents and transiting motorists/cyclists/walkers. Rumours of proposals to close these have alarmed local citizens who have persuaded the Steering Group of a continuing need. The pathway opposite these toilets and the area by the Church Lynch Gate are always damp and after heavy rain running with water: in winter when there is frost about a real hazard exists. A better drainage system to channel the flow of water from the spring sources has long been needed and is included in our Action Plan.

Action 16f
Improve
surface water
management
on Church
Road

Church Path Whitwell



The bridle path leading to the church from Kemming Road is un-metalled and the surface is very uneven. A tarmac surface would meet with general support.

Action 16g
Re-surface the bridle path to the church in Whitwell

Footpaths



NT82, known as Cripple Path, has been closed for several years since the collapse of Undercliff Drive below Beauchamp. It has ancient Pilgrim Route associations and was a well-used footpath by walkers. It should be made safe and re-opened.

Action 16h
Reopen NT82 (Cripple Path)

Re-surfacing NT24 would encourage parents to park in Townend car park and walk their children to and from school. This would ease the 'peak hour' parking difficulties in The Glen and Niton High Street.

Action 16i
Re-surface NT24 (Townend to school in Niton)

The construction of a cycle/pedestrian pathway along the whole length of Chatfeild/Kemming Road has been a strongly represented need from the residents of both villages, in particular from Whitwell parents with children at school in Niton.

Action 16j
Construct Niton/Whitwell cycle/pedestrian path along Chatfeild Road

These last two pleas may qualify for funding under the 'Safe Routes to School' Scheme.

Responsibility for Local Services

Whilst maintenance of a satisfactory road network must remain a responsibility of the IW Council Highways Department, for other services there is a measure of support for the delegation of responsibility and necessary authority/resources to the Parish Council; thereby enabling faster and probably less expensive remedial action where this becomes needed.

Action 16k
Delegation of authority/responsibility from IWC to PC for some local services

17. CONCLUSIONS

Where we have identified the need for some new service or facility, or a modification of the status quo, we have included that in the Action Plan annexed. We have taken advice from those who have been through this process before us and we are concerned that the involvement of so many members of the community in the Parish Plan process should bear fruit. We have tried to identify people who would be willing to become "champions" of the various projects in the Action Plan and where we have succeeded we have, with their agreement, named them. But we are very certain indeed that the main channel through which ideas and projects for the future should be developed is the Parish Council.

In a recent letter to 'The Times', the Minister for Local Government has said that the Government recognises the potential for an enhanced role for Parish Councils. He went on to say, "as the tier of government closest to local communities, Parish Councils have the potential to make a real difference to the quality of local life". Local elections are due to be held in 2005. There are, we believe, opportunities highlighted in this document for the Parish Council to adopt that enhanced role and for the community to ensure in 2005 that membership of their Parish Council for the following four years is sought by those who really do want to make Niton and Whitwell even better villages to live in than they are today.

Finally, in order to ensure that this plan "makes a difference", we are recommending that the action plan should be reviewed by the PC on a regular, biannual basis.

Action 17a
Review
Action Plan
every 6
months

APPENDIX 1 STEERING GROUP MEMBERS

The following residents of Niton and Whitwell were members of the Steering Group throughout the period from January 2003 to March 2004:

*Wendy ARNOLD

*Ann INNES

Sandra LLOYD

Peter MARSDEN

Fay NORRIS

*John STOTESBURY

* Parish Councillors

Eileen CUSWORTH, who produced minutes of all the meetings held during 2003, and Bill CUSWORTH, who joined the Group in April 2003 were also members until December 2003. *Margaret MORRIS was a member of the Group for the first 6 months. Ingrid RAMSDALE-CAPPER analysed the responses to the 'questionnaire', Steve CLUTTERBUCK provided valuable input to discussion on recreation facilities and Carol COURT joined the Group in August 2003 to strengthen the 'production team'.

The Steering Group established an e-mail address which remains extant: nwplan@hotmail.com

APPENDIX 2 NITON & WHITWELL HISTORIC LANDSCAPE CHARACTER ASSESSMENT

1. Introduction

Much of the parish lies within the Isle of Wight Area of Outstanding Natural Beauty. The AONB Partnership encourages the local preparation of parish landscape character assessments using the methodology developed by the Countryside Agency and these assessments can be adopted as Supplementary Planning Statements. Further information about the historic landscape character of the parish can be obtained from the Sites and Monuments Record and the HLC database held at the County Archaeology and Historic Environment Centre. The following notes have been compiled using HLC data and ecological data supplied by the Countryside Section of the Isle of Wight Council. They could form the basis of a full landscape character assessment at a later date, with appropriate support from the AONB Unit.

2. Historic Landscape Character Areas

Three historic landscape character areas cover a large part of South Wight, these being 'South Wight Downland', 'South Wight Downland Edge' and 'The Undercliff'. All three historic landscape character areas are represented within Niton and Whitwell. The underlying geology comprises Chalk and Upper Greensand on the downs with Lower Greensand deposits in the lower lying areas. Visually, the landscape encompasses the upland ridges and slopes of St Catherine's Hill, St Catherine's Down and Head Down; small pasture fields on the lower downland edge slopes and in the Yar Valley; flatter arable farmland to the east and south-east; and the rocky, tree-covered landscape of the Undercliff beneath the dramatic inner cliff. The River Yar rises to the west of Niton and flows northward, passing to the west of Whitwell and dividing the two main upland areas of the parish. A tributary flows to the east of Whitwell before joining the Yar. To the north of Whitwell the Yar Valley is wider and flatter.

South Wight Downland

In the past much of this historic landscape character area would have been communally grazed downland supporting floristically rich chalk and acid grassland. Today there is virtually no unimproved chalk grassland within the South Wight Downland of the parish although there are strips of unimproved acidic grassland along the east side of St Catherine's Down and on Head Down. Virtually all other grassland has been improved for agriculture and no longer supports a rich native flora. Three Bronze Age round barrows (burial mounds) have been recorded within this area and the barrow on St Catherine's Down is still a prominent earthwork. Although the medieval stone lighthouse on St Catherine's Hill and the Hoy Monument at the north end of St Catherine's Down lie just outside the parish they are dominant features in the downland landscape.

Hill slopes that now support arable agriculture may have been unenclosed downland in the past. Field patterns and boundaries suggest relatively recent post-medieval enclosure. On the flatter ground around Niton and Whitwell and also around Nettlecombe there are large arable fields. These fields occupy the same areas as the

former common open fields of Niton and Whitwell which survived into the nineteenth century.

There is no settlement or woodland within the South Wight Downland Area.

South Wight Downland Edge

The hill slopes to the east of St Catherine's Down lie on the boundary between the Downland and Downland Edge areas. These slopes may formerly have been used for unenclosed downland grazing although they are now occupied by large arable fields. The isolated Downcourt Farm is the only pre-nineteenth century settlement within this hill slope zone. The sloping ground below Head Down stretching down to the Newport Road north of Niton is occupied by medium sized arable fields.

Small hedged pasture fields with sinuous boundaries linked by many tracks characterise the area around Wydcombe and small fragments of unimproved neutral grassland and species-rich marshy grassland persist. However, there is evidence that more arable agriculture took place in the past. There are several farmsteads in this area although other farms shown on early maps have now disappeared.

To the east of the Niton-Newport Road on the lower, flatter ground of the Yar valley the farmland is mainly arable, with large fields at the north end of the parish. Around Whitwell there are small pasture fields. Farmsteads occur at regular intervals along the Yar Valley.

There is only a small amount of woodland within this historic landscape character area and only a few tiny fragments of ancient woodland predating 1793. Nineteenth Century ornamental grounds and landscape parks at the Hermitage, Wydcombe and Strathwell are still recognisable in the landscape.

The main settlements of the parish lie within this historic landscape character area, tucked beneath the steeper 'downland' slopes and close to the Yar Valley. Both Niton and Whitwell are historic settlements associated with medieval parish churches. The historic core of Niton, shown on the 1793 Ordnance Survey Map, was a nucleated cluster around the church. In the nineteenth and twentieth centuries settlement spread down into the Undercliff. The historic core of Whitwell was linear in form but this form has been modified by twentieth century housing to the west of the main road. Nettlecombe was a medieval settlement subsidiary to Whitwell and, as its name implies, is situated within a combe to the east of Whitwell, surrounded by higher ground. There is some archaeological evidence for a slightly larger settlement here in medieval times. Bierley, at the north end of the parish, is shown as a single farmstead on the 1793 Ordnance Survey map although it now comprises a small cluster of twentieth century dwellings.

The Undercliff

The unique area of the Undercliff is the result of a coastal landslip which has occurred within the last 10,000 years with large falls continuing to the present day. Prehistoric rubbish deposits (middens) have been found along the coast, suggesting that fishing and the collection of shellfish took place in the area. Medieval middens have also been found. The uneven ground surface is not very suitable for agriculture and some land would have been uncultivated in the past but there were a number of medieval

agricultural holdings including Knowles, Beauchamp and Orchard. Stone walls define the small irregular fields that survive in places. On the Isle of Wight these walled field boundaries occur only within the Undercliff. Traces of ridge and furrow have been recorded by archaeologists near St Catherine's Point. Ridge and furrow is usually associated with ploughing of medieval or later date but here it may indicate 'lazy beds' - a primitive type of spade cultivation employed in difficult terrain.

The historic landscape character of the Undercliff has been greatly influenced by the houses and pleasure grounds constructed by the well-to-do from the early nineteenth century. The earliest such properties within the parish were Puckaster, Beauchamp and the Orchard and later examples included Mount Cleves, La Rosiere, Thorncliff, Westcliff and Windcliff. Ornamental planting around these properties and the growth of twentieth century secondary woodland has changed the Undercliff from a relatively open landscape to a more heavily wooded environment except in the area of active landslip near Rocken End and the exposed fields around St Catherine's Lighthouse and Knowles Farm. The Nineteenth Century St Catherine's Lighthouse is the most dominant built feature in the landscape.

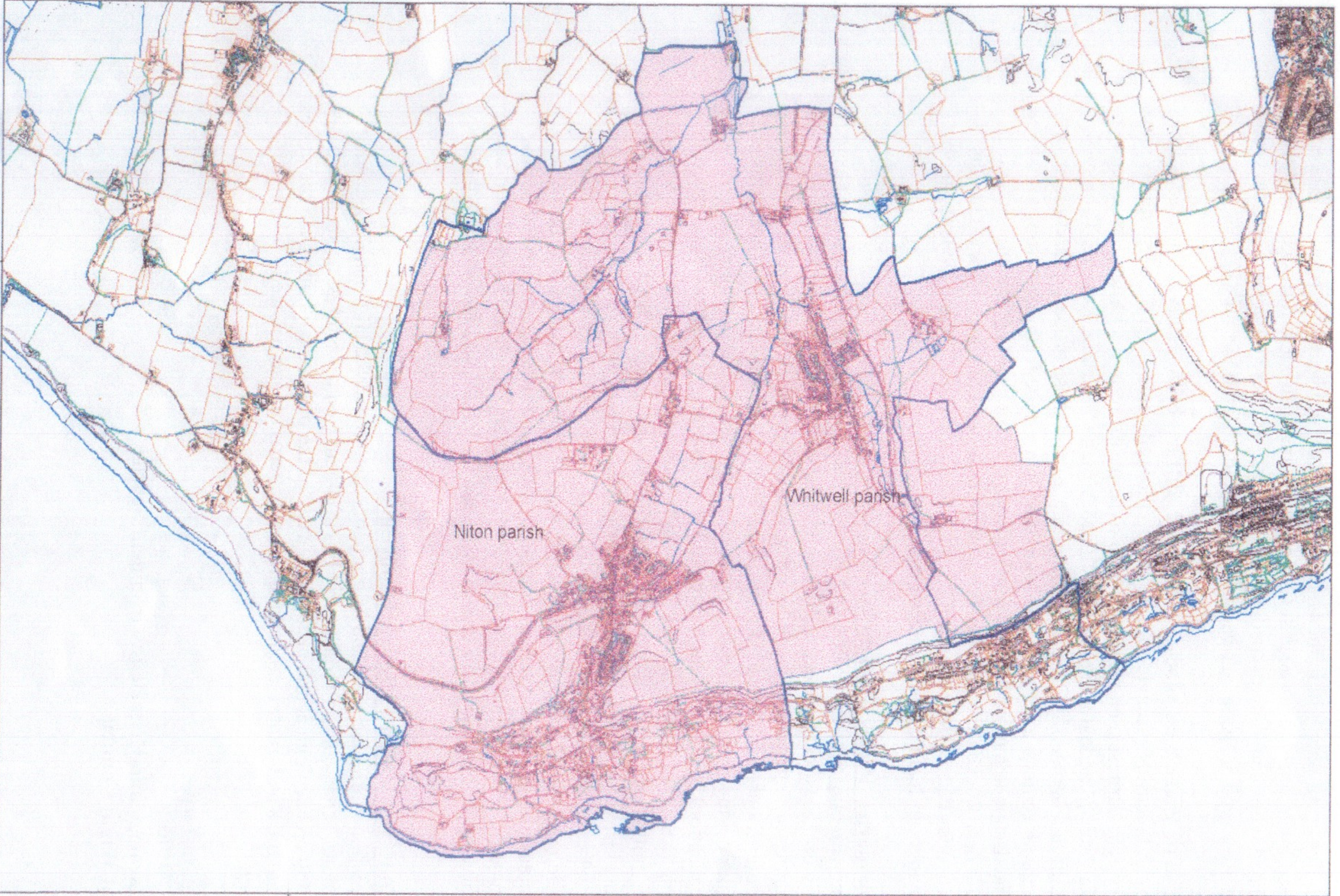
3: Boundaries, Roads and Tracks

The modern civil parish of Niton and Whitwell occupies nearly the same area as the historic ecclesiastical parishes of Niton and Whitwell. The ecclesiastical parish boundaries of both Whitwell and Niton, as shown on the six inch Ordnance Survey of 1862, are still preserved as field boundaries for much of their length. These intricate and interlocking boundaries date from medieval times (subject to some later rationalisation) but parts of the Whitwell Parish Boundary could have originated in the Anglo-Saxon Period when Niton and Whitwell may have formed part of a much larger 'mother parish' based on Godshill. Other surviving linear boundaries may indicate historic land holdings and require further investigation. Boundaries, roads and tracks are often the most ancient elements in the landscape. Roads and tracks often delineate field systems and land holdings of medieval date or link farmsteads with areas of communal downland grazing. Constant use over time created hollow ways such as Bury Lane which leads from Niton village to Head Down. Niton Shute and the Cripple Path formed a link between the Undercliff and the land above the cliff.

4. Future Work on the Historic Landscape

Information within the Sites and Monuments Record and the HLC database held at the County Archaeology and Historic Environment Centre could be used as the basis for a full archaeological and historical survey of the parish examining such themes as land holdings and estates, communications, patterns of land use, and settlement through time.

Vicky Basford
HLC Officer
Archaeology and Historic Environment Service
Isle of Wight Council



ISLE of WIGHT
COUNCIL
Archaeology and Historic
Environment Service
Tel/fax: 01983 823810

■ Civil Parish of Niton & Whitwell
— Medieval Parish Boundaries

Reproduced from Ordnance Survey digital mapping with the permission of the Controller of Her Majesty's Stationery Office. Licence Number LA076694.
Crown copyright. Unauthorised reproduction infringes Crown copyright and may lead to prosecution or civil proceedings.

Scale 1:31,210
Date 15-12-2003



APPENDIX 3 QUESTIONNAIRE & RESPONSES

Publicity Poster

NITON & WHITWELL'S FUTURE



TALK ABOUT IT !

A Steering Group has been formed consisting of local people from both villages to put together a Parish Plan – a picture of how you the community of Niton and Whitwell see the future of our two villages over the coming years. The Plan will also hopefully provide a means of obtaining finance to complete projects that will be highlighted in the Plan for the benefit of the villages as a whole. This is a unique one-off opportunity for us all.

We are therefore looking for **YOUR IDEAS !**

- What facilities do we need for the future in each village which do not already exist?
- Which existing local services are most important to you and how could they perhaps be improved in the future?
- Can you think of any projects that would benefit the villages?
- What do you think about: -
 - Transport to and from the villages
 - Traffic around the villages - is there any way in which this could be improved?
 - Safety of pedestrians around the villages
 - Parking in the villages

Please take some time to think about these important issues for the future of our villages and discuss them with your friends and family. Please then return the attached form giving us your views

Questionnaire**NITON & WHITWELL PARISH PLAN**

Please take some time to think about the issues raised and let us know your views and ideas by completing this reply sheet or writing your own letter if you prefer and placing it in one of the boxes placed in the villages at the following locations:

Niton: Londis Supermarket : Niton Books : White Lion : Post Office : Chemist
Whitwell: Post Office/Stores : White Horse : Whitwell Garage

Alternatively e-mail responses can be sent to nwplan@hotmail.com

1. **What facilities do we need for the future in each village, which do not already exist?
Are there any we could do without!**

2. **What existing local services are most important to you and how could they perhaps be improved in the future?**

3. **Can you think of any projects that would benefit either or both of the villages?**

4. **What do you think about transport, traffic, pedestrian and parking issues as they affect the villages? Can you think of any solutions to problems you feel exist?**

5. **Are there any other issues relevant to our Parish Plan that you would like to raise!
Would you be willing to help us with our Action Plan!**

To allow us to respond as appropriate to individual replies we ask you to place your name and address on the reverse of this form. However it is entirely optional as we are anxious to hear all views however expressed to us.

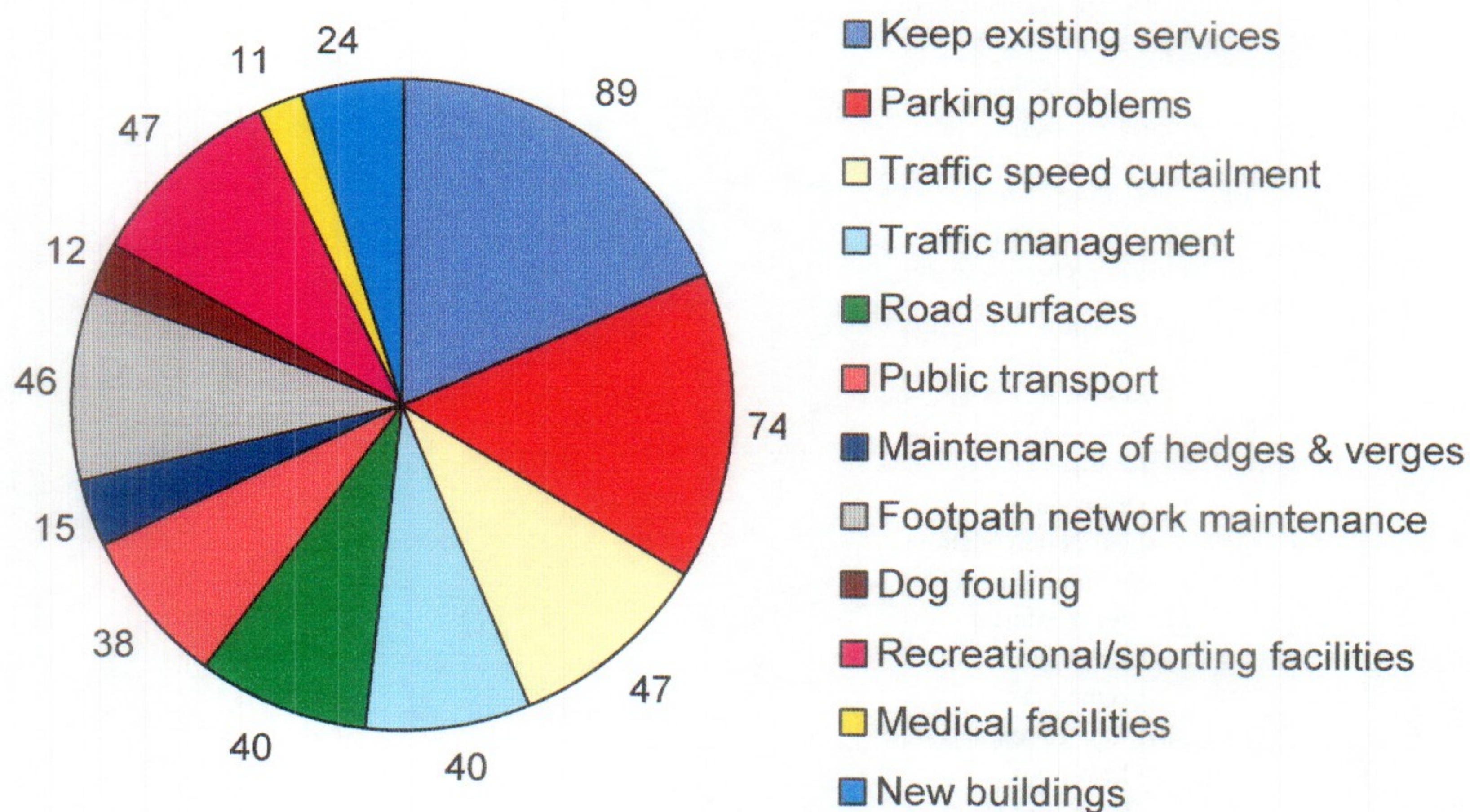
Analysis of Responses

The following table provides a detailed breakdown of the number of replies for each subject. Note: Each questionnaire may provide replies on more than one subject.

Subject	Number of Replies
Keep existing	89
Parking	74
Recreational ground	47
Speed enforcement	47
Footpath	46
Road surface	40
Traffic Policy	40
Public transport	38
New services	32
New buildings	24
Tidy headges/verges	15
Dog fouling	12
Medical needs	11
Skateboarding	10
Sports facilities	10
Competitions/festivals	9
Zebra crossing	8
Access to steps, etc.	7
Law	7
Internet café	6
Seating	6
Voluntary transport	6
Young homes/work	6
Refuse collections	5
Dentist	4
Public lavatories	4
Vandalism	4
Bonfires	3
Drainage	3
Leaflet new/visitors	3
Swimming pool	3
War memorial	3
Conservation area	2
Council tax	2
Environmental centre	2
Flower boxes	2
Grave yard	2
Music	2
Pests	2
Village signs	2
Allotments	1
BBQ areas	1
Gas	1
Organised events	1
Parish notice board	1
Pond	1
Red pumps	1
Regeneration	1
Village suggestions	1
Village wardens	1
Cycle track	1

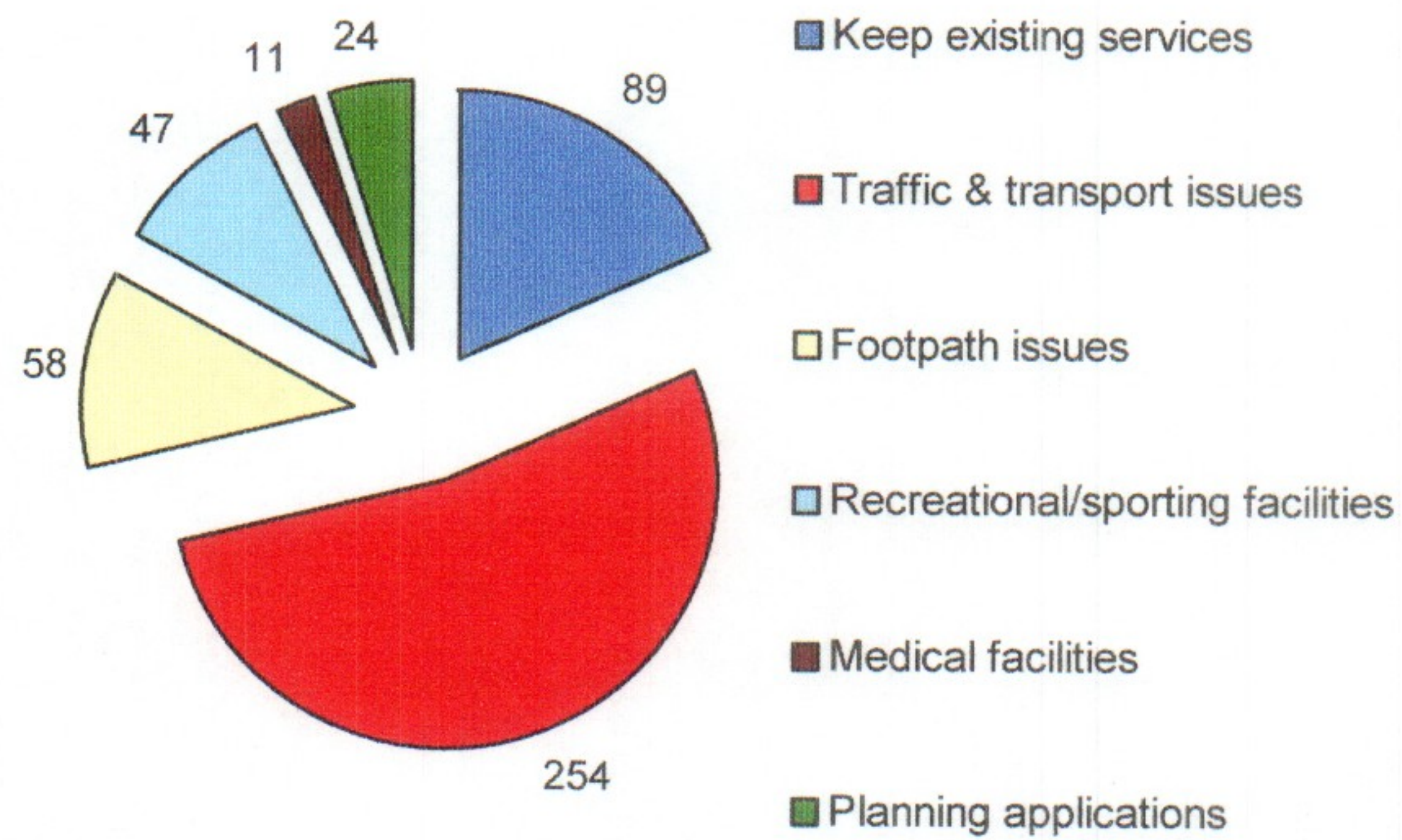
The following table summarises these replies by grouping the subjects. The pie chart provides a pictorial view of these figures.

Subject	Number of Replies
Keep existing services	89
Parking problems	74
Traffic speed curtailment	47
Traffic management	40
Road surfaces	40
Public transport	38
Maintenance of hedges & verges	15
Footpath network maintenance	46
Dog fouling	12
Recreational/sporting facilities	47
Medical facilities	11
New buildings	24



This can be further summarised as follows:

Subject	No of Replies
Keep existing services	89
Traffic & transport issues	254
Footpath issues	58
Recreational/sporting facilities	47
Medical facilities	11



ANNEX THE ACTION PLAN

“To identify and promote the current and future needs of the community; to enable such needs to be met through dialogue, attraction of funds and development: whilst retaining the local distinctiveness, facilities and sense of community which currently make the villages so popular.”

The Action	How it will be tackled	Priority	Time-scale	Lead Responsibility	Partners	Resource Implications
5a. Planning applications within the Parish to be deposited in Niton Library.	PC to arrange with IWC Planners		2004	Parish Council (PC)	IWC Planners	Library space.
5b. PC input into IW new Planning Regulations Consultation.	PC to liaise with IW Planners		2004-2007	PC	AONB office RCC	
6a. Section 6 recommendations (12 in number) re. Traffic flows/calming measures/parking etc.	PC to liaise with IWC Transport Dept	High	2004/05	John Stotesbury (PC)	PC IWC Transport Dept	Traffic signs Road markings.
7a. Assessment of Public/Community transport needs.	Possibly formalising friends who give lifts using e-mail. Publicising other available facilities, such as age concern.			?	RCC	Local co-ordinator's time.
8a. Off-street parking for in-fill housing.	PC to persuade IWC of the need.			PC	IWC	
8b. Affordable housing rural scheme	Negotiation with Housing Association.		As opportunity arises.	John Stotesbury (PC)	Housing Association Joanne Downey (RCC Rural Housing Enabler)	
9a. Improve children's play facilities within the recreation ground.	Upgrade skate board area, and re-provide swings, roundabouts, etc.		2004/05	PC	Users' Group Ray Ginsburg Ann Sargent Kate Harvey	? Available funding.

The Action	How it will be tackled	Priority	Time-scale	Lead Responsibility	Partners	Resource Implications
9b. Provision of a Whitwell play area.	Purchase or lease of land and construction of a play area.	High	2004-05	PC	John Attrill	Funding – grants/bequest.
9c. Football/cricket ground enlargement/levelling with pavilion & car park.	A committee of interested parties.		3-5 years	Duncan Heenan	Steve Clutterbuck David Townsend Recreation groups	Major grant aid and local fundraising. ¹
10a. Regularise mobile police visits & law enforcement of parking areas	Liaise with IW Police and secure appropriate funding.		2004	Wendy Arnold (PC)	IW Police	
11a. Production and annual re-issue of a Green Island leaflet, including information on a website.	Green Island Team advised by local enterprises.		In hand Available Spring 2004	Ann Sargent	Fay Norris Niton businesses	
12a. Re-build and relocate the Health Centre.	GPs and Primary Health Care Trust.		2-4 years	Dr Peter Hill	Joan Waddleton	
13a. Niton Primary School Breakfast/After School Club.	Parent/Teacher partnership.			Head Teacher	FONS	Staffing/vetting.
14a. Introduce & publicise quarterly 'open' meetings of the Parish Council.	With PC agreement.		2004	Parish Clerk	PC	
14b. Improve PC/IWC communication links.	County Councillor to attend PC meetings - frequent dialogue.	High	2004/05	Parish Clerk	PC 2005 elections	
16a. Road sweeping schedule.	PC to discuss with IWC		2004/05	PC	IWC	Could result in savings.
16b. Additional 'Dog pooh bins' provided in Whitwell and Niton.	PC to decide location. IWC to provide funding or other sponsorship to be sought.			Carol Court	PC IWC Dog Warden	

¹ Action 9b: Assuming planning permission (UDP Policy G.5) is obtained, grant aid will need to be requested from The Lottery Fund, Sports Council, Football Association Foundations, The Peter Harrison Foundation, etc.

The Action	How it will be tackled	Priority	Time-scale	Lead Responsibility	Partners	Resource Implications
16c. Litterbin replacement.	PC to lean heavily on IWC or to assume responsibility			PC	IWC	? Sponsorship.
16d. Maintenance of highway stonewalls & vegetation.	PC to lean heavily on IWC.		2004/05	PC	IWC	IWC/Contract labour costs.
16e. Road network – Section 16 recommendations (6).	Higher priority to be given to S. Wight road network by IWC.	High	2004/06	John Stotesbury (PC)	Wendy Arnold (PC) PC IWC Traffic Dept.	Significant capital sums.
16f. Improve surface water management on Church Road pavement.	PC to discuss with IWC.			PC	IWC	
16g. Resurface the bridle path to the church in Whitwell.	PC to discuss with Whitwell PCC and IWC.			PC	IWC	
16h. Reopen NT82 (Cripple Path)	Carol Court to meet with Derek Hussey & IWC Footpath officers.		2004/05	Carol Court	Derek Hussey (PC) IWC Footpath Officer	
16i. Resurface NT24 (Townend to school in Niton)	Carol Court to meet with Derek Hussey & IWC Footpath Officers.	High	2004/05	Carol Court	Derek Hussey (PC) IWC Footpath Officer	? Safe route to school funding.
16j. Construct Niton/Whitwell cycle/pedestrian path along Chatfeild Road.	PC to discuss with landowners & IWC.	High	2004/06	Andy Osborne	Carol Court PC IWC	? Safe route to school funding.
16k. Delegation of authority/responsibility from IWC to PC for some local services.	PC to discuss with IWC		2004/05	PC	IWC	Provision of appropriate funding levels and local expertise.
17a. Review Action Plan.	At PC meetings	High	Bi-annually	PC	Named 'Champions'	