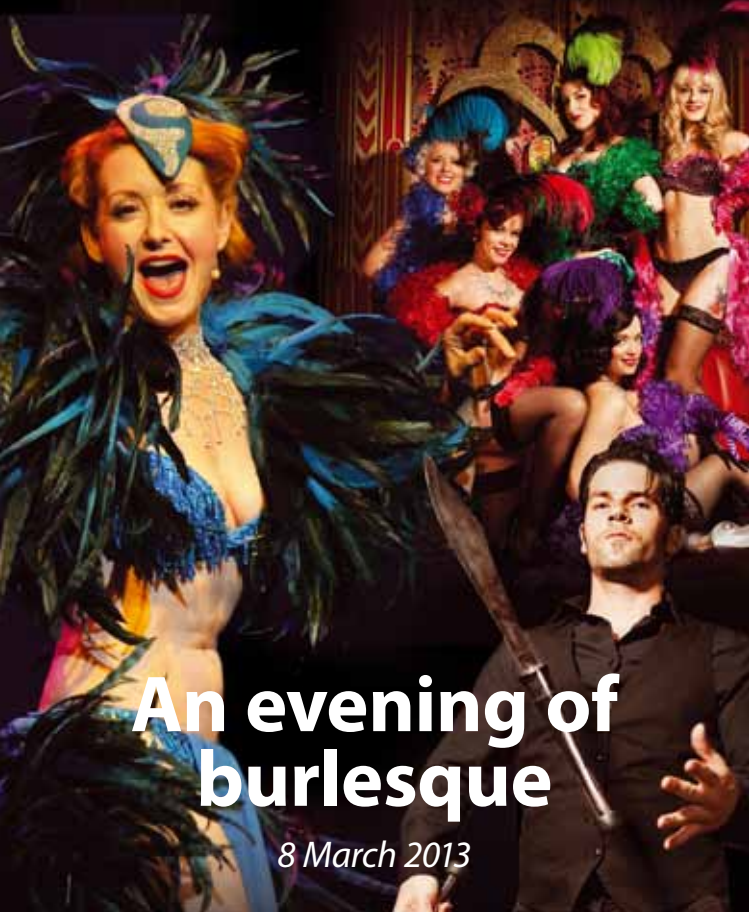




Medina Theatre

**Programme of events
January to March 2013**



An evening of burlesque

8 March 2013

**Also appearing
Rod Stewart tribute • Fleetwood Bac
The Elephant Bridesmaid**

Welcome to Medina Theatre's spring 2013 programme of entertainment for all ages!

January

- | | | |
|----|----------|----------------------------------|
| 17 | Thursday | Vectis DFAS |
| 20 | Sunday | Island Concert Band |
| 26 | Saturday | Isle of Wight Symphony Orchestra |

February

- | | | |
|----|-----------|--|
| 6 | Wednesday | Film: Skyfall (12A) |
| 13 | Wednesday | Film: Twilight Saga Breaking Dawn Part 2 (12A) |
| 16 | Saturday | Wight Strollers Pantomime |
| 17 | Sunday | Wight Strollers Pantomime |
| 20 | Wednesday | Film: Great Expectations (12A) |
| 21 | Thursday | Vectis DFAS |
| 22 | Friday | Rod Stewart Tribute |
| 23 | Saturday | Wight Strollers Pantomime |
| 27 | Wednesday | Film: Gambit (12A) |

Dance



Lecture



Comedy



Film Club



Music



Exhibition



Performance

Film club members get ten per cent discount where you see the film club symbol.

You can find out more about Medina Theatre events and book online at medinatheatre.co.uk

MARCH

1	Friday	Fleetwood Bac
2	Saturday	IW Cantata Choir
3	Sunday	The Elephant Bridesmaid
6	Wednesday	Film: Life of Pi (PG)
8	Friday	An Evening of Burlesque
13	Wednesday	Film: Les Miserables
16	Saturday	Isle of Wight Symphony Orchestra
20	Wednesday	Film: Quartet (12A)
21	Thursday	Vectis DFAS
23	Saturday	Elmwood School of Dance
24	Sunday	

PLEASE NOTE

Due to the refurbishment programme, from early January until late April, while the theatre remains open, the first floor toilets, bar and café will be closed. We apologise for the inconvenience this may cause but the new bar and café area and remodelled toilets will give the first floor around the theatre a new bright and airy feel.

WHAT'S ON Would you like to keep up-to-date with events at Medina Theatre? If you'd like a copy of our quarterly programme, please ask the box office to include you on our email list. As well as the programme, we can send you occasional information on special offers.

You can also find out more about Medina Theatre events and book online at medinatheatre.co.uk

SHOWS



Rod Stewart Tribute



The voice, the look, the charisma – Paul Metcalfe’s Rod Stewart tribute act has it all and is a superbly authentic and entertaining tribute to a truly great singer and performer.

What sets Paul’s tribute to Rod apart is the passion and commitment he brings to every single performance.

Paul performs all of Rod’s massive hits in his Rod Stewart tribute act, as well as many other favourites from the early booze-soaked days with The Faces through to The Great American Songbook and classic Motown tunes from Soulbook – all sung and performed in Rod’s inimitable style.

www.rodstewarttribute.co.uk

Friday 22 February, 7.30pm

Tickets £15





Fleetwood Bac



Fleetwood Bac were the world's first and are regarded as the UK's most authentic Fleetwood Mac tribute show, endorsed by Mick Fleetwood himself, raved about by Peter Green's biographer, and are the only Mac tribute band in the world to authentically replicate the classic Stevie/Lindsey/Christine/John/Mick 'Rumours' line-up.

www.fleetwoodbac.com

Friday 1 March, 7.30pm

Tickets £14



The Elephant Bridesmaid



Written especially for parents to enjoy with their children *The Elephant Bridesmaid* is a magical musical about weddings and wombats and the loveliest elephant the world has ever known.

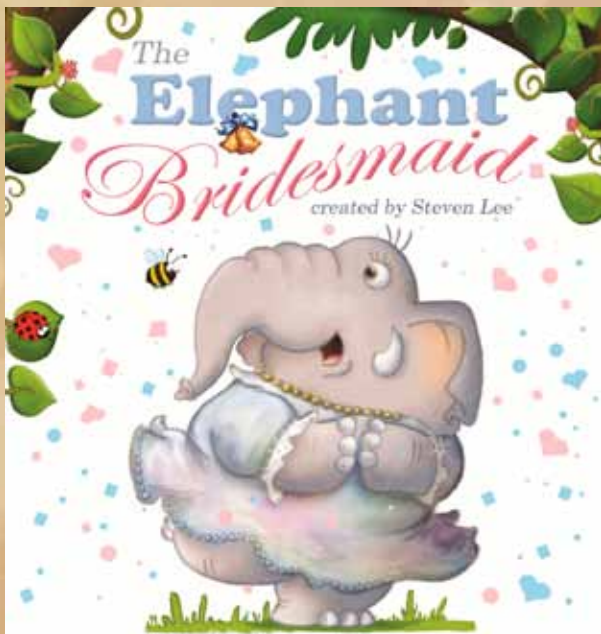
Based on a story from the best-selling book *How The Koala Learnt To Hug and Other Australian Fairytales*, this delightful show has just the right balance of games, songs and heart-warming elephant antics to make any day feel like your special day.

So join Nessie the elephant and her fantastic animal friends and help them as they go in search of an outfit fancy enough (and large enough) to make her the Australian jungle's most beautiful elephant bridesmaid!

For ages 4 to 104.

Sunday 3 March, 2.30pm

Tickets Adult £9.50/Child £8.50/Family (2+2) £32





An Evening of Burlesque



Direct from London's West End, tantalising yet tasteful, camp and colourful, this fascinating art form is brought to life for your delectation!



Following a hugely successful international tour, the UK's biggest burlesque show is back on the road with a brand new jaw-dropping show for 2013.

Elegant showgirls, Parisian charm and Las Vegas glamour combine in a spectacle that marries live vocal talent with the art of burlesque!

It's all tease, no sleaze as corsets, killer heels, stockings aplenty, sultry vocals, mischief, magic, frivolity and fun collide.

Showcasing award winning talent from across the country this is your chance to see some of the Burlesque world's favourite stars. Back in vogue, this all-encompassing spectacular brings variety back to the theatre, combining comedy, magic and vocal harmony with couture costumes, breathtaking choreography and a fabulous score!

Over-18s only

Friday 8 March, 7.30pm

Tickets £20

COMMUNITY THEATRE



Vectis Decorative and Fine Arts Society

London's Changing Skyline : Its Past, Present and Future

Wartime damage to the historic buildings of London provided the catalyst for revolutionary new builds such as Richard Seifert's Nat West Tower, the skyscrapers of the 1960s, and the Gherkin and the Shard of today.

Anthea Streeeter's lecture traces the early history of London's architecture, from the Roman port to the timber medieval city dominated by the original St Paul's and London Bridge.

www.vectisdfas.org.uk

Thursday 17 January, 8pm

Tickets on the door



Band Concert

Island Concert Band

Sunday 20 January, 2.30pm

Tickets £6.50



Isle of Wight Symphony Orchestra

Overture – Russlan & Ludmilla

Glinka

Pavane

Fauré

Violin Concerto No. 2

Shostakovich

Symphony No. 5

Sibelius

Soloist: *Alexander Sitkovetsky*

www.iwso.info

Saturday 26 January, 7.15pm

Tickets £13.50/£6 Student and child

Wight Strollers present



Sleeping Beauty - a family pantomime

www.wightstrollers.com

Saturday 16 February, 2.30pm and 7.30pm

Sunday 17 February, 2.30pm

Saturday 23 February, 2.30pm and 7.30pm

Tickets : Adult £7.50/Senior citizen £6.50/

Child £5.50

Youth groups (10 or more) £5 – matinees only

Vectis Decorative and Fine Arts Society



Secret Beauty: Hidden Messages in Pictorial Composition

Paintings can sometimes be difficult to interpret.

Richard Box explains how artists use shape, line and colour to express their intentions and innermost thoughts.

Thursday 21 February, 8pm

Tickets on the door

Isle of Wight Cantata Choir



Nelson Mass

Haydn

A Great and Glorious Victory

Willcocks

Saturday 2 March, 7.30pm

Tickets £10

Isle of Wight Symphony Orchestra



The Golden Spinning Wheel

Dvorak

Sea Pictures

Elgar

Symphony No. 3 (Pastoral)

Vaughan-Williams

Saturday 16 March, 7.15pm

Tickets £13.50/£6 children and students



Vectis Decorative and Fine Arts Society

Legend and Lustre : Jim Thompson and Thai Silk

Jim Thompson is credited with revitalising the Thai silk industry at a time in 1945 when the ancient hand weaving skills were being replaced by cheap synthetics. Denise Heywood touches on his art collection and his mysterious disappearance in the Cameron Highlands.

Thursday 21 March, 8pm

Tickets on the door



Elmwood School of Dance

Born to Dance

Saturday 23 March, 7pm

Sunday 24 March, 3pm

Tickets £8/£4.50 Under 16

YOUR ADVERT COULD BE HERE!

The theatre programme of events is published on a quarterly basis. Each quarter:

- 1,500 copies are printed and distributed
- PDF versions are emailed directly to over 1,600 theatre patrons
- The programme is downloaded over 600 times from the council's website *iwight.com*

For more information and to book your advertisement for the next twelve months, please contact the theatre box office – tel: (01983)527020, or email: medina.theatre@iow.gov.uk

Advertisement



For All Your Legal Needs

- Conveyancing
- Crime
- Divorce/Family
- Accident Claims
- Wills, Estates & Tax
- Employment
- Debts
- Legal Aid



Isle of Wight **524431**

www.roachpittis.co.uk

62-66 Lugley Street, Newport, PO30 5EU

FILMS

Love film? Why not join Medina Theatre film club!

Films are shown on Wednesday nights from September to May. Membership is £7.90 for the season which gives you a discounted price on your ticket plus **free** entry to your first film.

Film Club members can also get ten per cent discount on selected Medina Theatre shows where you see this symbol.



Please note films may be subject to change.

Please check County Press listings and www.medinatheatre.co.uk for updates to the programme.

Skyfall (12A)

Bond's loyalty to M is tested as her past comes back to haunt her. As MI6 comes under attack, 007 must track down and destroy the threat, no matter how personal the cost.

Wednesday
6 February, 7.30pm
Movie Club members
£3.60/Non-members
£4.60



Twilight Saga : Breaking Dawn Part 2 (12A)

After the birth of Renesmee, the Cullens gather other vampire clans in order to protect the child from a false allegation that puts the family in front of the Volturi. The saga concludes!

Wednesday

13 February, 7.30pm

Movie Club members

£3.60/Non-members

£4.60



Great Expectations (12A)

Mike Newell directs this remake of Dickens' classic novel. Helena Bonham Carter stars as Miss Haversham, with Ralph Fiennes as Magwitch and Jeremy Irvine as Pip.

Wednesday

20 February, 7.30pm

Movie Club members

£3.60/Non-members

£4.60



Gambit (12A)

An art curator (Colin Firth) decides to seek revenge on his abusive boss (Alan Rickman) by conning him into buying a fake Monet, but his plan requires the help of an eccentric and unpredictable Texas rodeo queen (Cameron Diaz).

Wednesday

27 February, 7.30pm

Movie Club members

£3.60/Non-members

£4.60



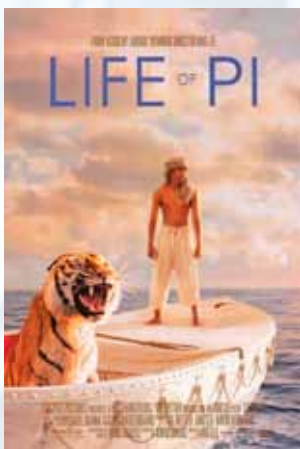
Life of Pi (PG)

Ang Lee directs this magical adventure story of a young man who survives a disaster at sea is hurtled into an epic journey of adventure and discovery. While cast away, he forms an unexpected connection with another survivor, a fearsome Bengal tiger. Based on the best-selling novel by Yann Martel.

Wednesday 6 March,

7.30pm

Movie Club members £3.60/Non-members £4.60



Les Miserables (cert TBA)

Oscar-winning director Tom Hooper brings this adaptation of the successful stage musical based on Victor Hugo's classic novel set in 19th-century France. Anne Hathaway, Hugh Jackman, Amanda Seyfried, Russell Crowe and Helena Bonham Carter take leading roles.



**Wednesday 13 March,
7.30pm**

Movie Club members

£3.60/Non-members £4.60

Quartet (12A)



At a home for retired opera singers, the annual concert to celebrate Verdi's birthday is disrupted by the arrival of Jean, an eternal diva and the former wife of one of the residents.

Dustin Hoffman directs. Maggie Smith, Michael Gambon, Tom Courtenay and Billy Connolly star.

Wednesday 20 March 7.30pm

Movie Club members £3.60/Non-members £4.60

Film notes courtesy of www.imdb.com

COMING SOON



Hey Diddle Diddle

The Panto Company presents Hey Diddle Diddle.

9 April 2013



Wind in the Willows

27 April 2013



Phil Cool

4 May 2013

COMING IN 2013 A NEW ONE CARD OPTION

The council is introducing a new annual contract for Gold One Card membership early in 2013.

As well as being able to join at each of the council's leisure centres, you'll also be able to take out your new annual contract membership online. The Gold One Card gives you unlimited access to activities at The Heights in Sandown, Medina Leisure Centre in Newport and Westridge Squash and Tone Zone Gym in Ryde. You can use your card for the gym, swimming, activity classes, the health suite and racquet sports.

This new annual contract membership will be the most cost-effective way to get the most from the council's leisure facilities, which are currently undergoing a £6.8 million refurbishment. Existing customers are already enjoying the new state-of-the-art gyms at The Heights and Westridge, as well as the refurbished pools and new activity studio at The Heights.

No joining fee
No One Journey induction fee
Less than £30 per month

Look out for more details of this exciting development early in the new year. If you'd like us to notify you when this option is available, just email leisure@iow.gov.uk to be added to our mailing list.



Tickets and booking

Tickets can be reserved for most shows with full payment. Please enquire at the box office when you want to book. We accept payment by cash, credit or debit card, or by cheque – payable to Medina Theatre. Tickets may not be exchanged unless arrangements have been made with the box office prior to the performance date.

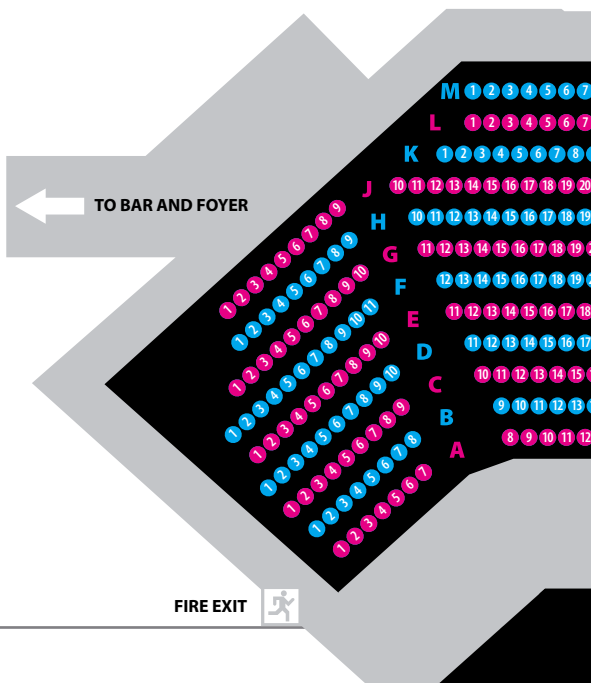
Refunds are not permitted unless the show is sold out and the box office can re-sell tickets. Refunds will be subject to a ten per cent administration charge.

Online bookings

You can book many of the shows at Medina Theatre online. To see if a show is available for on-line booking, visit www.medinatheatre.co.uk and follow the link. Please note online bookings are subject to a fixed £1 fee.

Concessions

Concessionary ticket prices are available for performances where stated. You are required to prove your entitlement to concessionary tickets.



What's on

Would you like to keep up-to-date with events at Medina Theatre? If you'd like a copy of our quarterly programme, please ask the box office to include you on our email list. As well as the programme, we can send you occasional information on special offers.

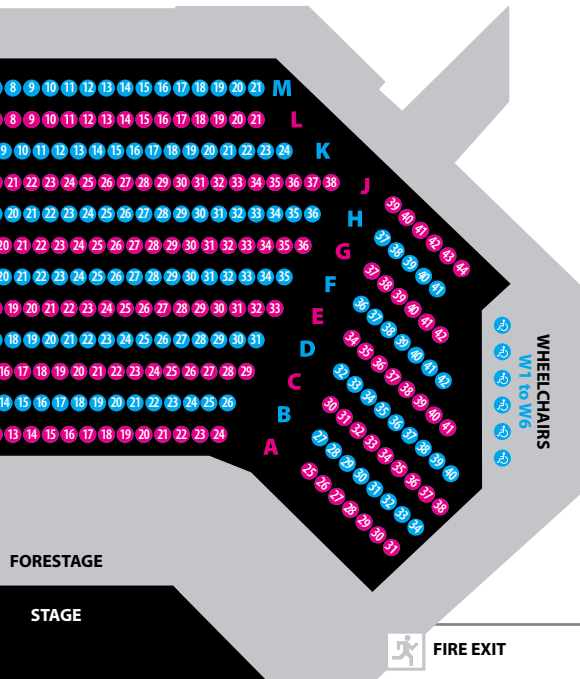
You can also find out more about Medina Theatre events and book online at medinatheatre.co.uk

Facilities for the disabled

A designated wheelchair area is situated on the left hand side of the auditorium. There is level access through to the theatre and an induction loop is installed for the hard of hearing. Wheelchair spaces are limited and must be booked in advance. Please advise the box office of any special requirements when booking.

Performance finish times

Many factors can affect the finish time of a performance, including late starts, over-running and encores. If you wish to know the finish time of a performance, please contact the box office on the day, and every effort will be made to give an accurate finish time.



FIRE EXIT



**Medina Theatre
Fairlee Road
Newport,
Isle of Wight
P030 2DX**

*www.medinatheatre.co.uk
medina.theatre@iow.gov.uk*

Located on the main Newport to East Cowes/
Ryde road next to Medina Leisure Centre.

Box Office tel: (01983) 527020

Box Office fax: (01983) 822821

Monday and Tuesday 10am to 6pm

Wednesday to Friday 10am to 8pm

Saturday 10am to 1pm

The box office is also open one and a half hours before
any performance is due to start.

This publication is available on request
in large print, audiotape or Braille and
in other languages. For further details
please contact the Isle of Wight Council
on (01983) 821000 (Typetalk available).

Supported by

