
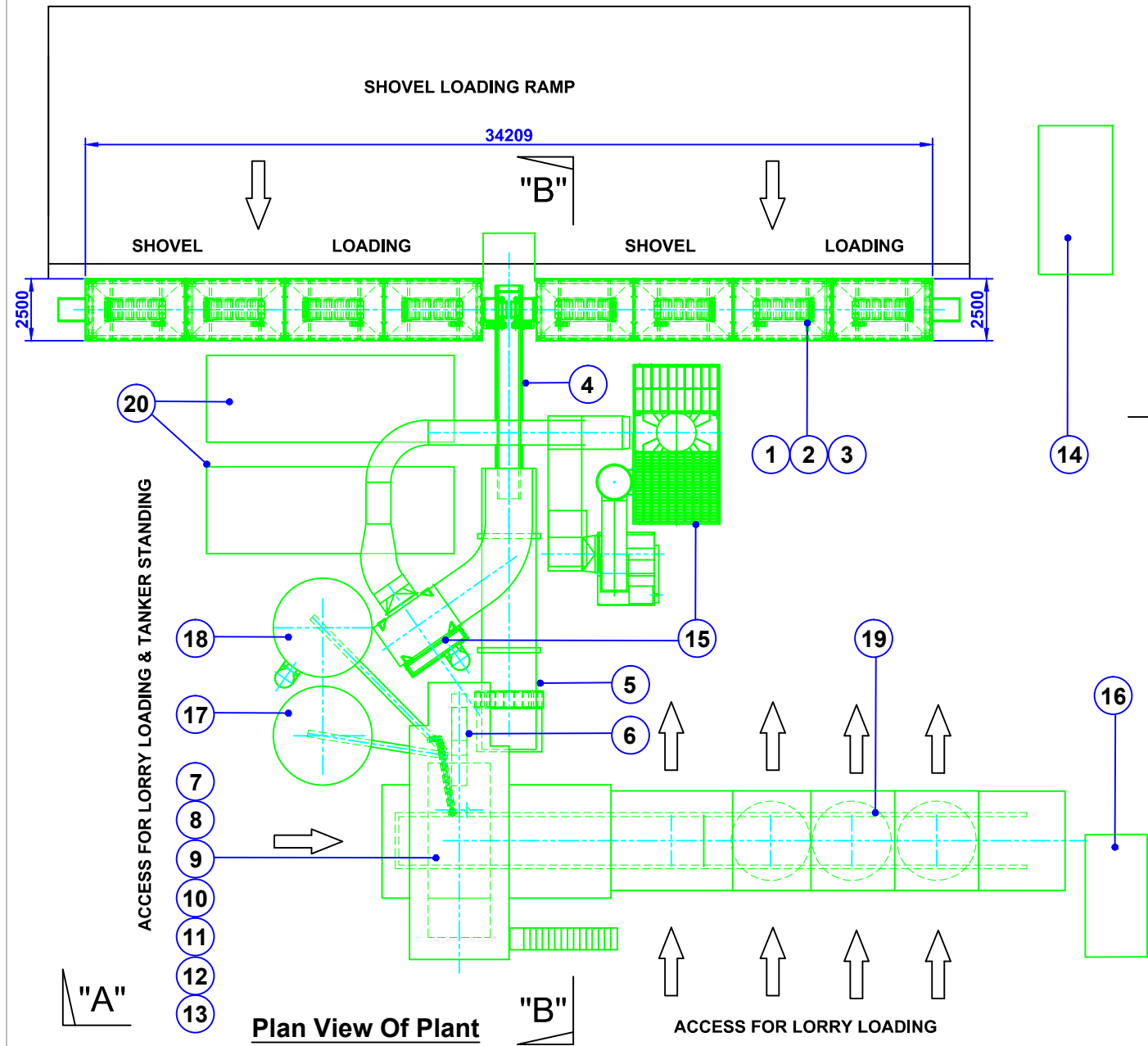


View On "A" - "A"

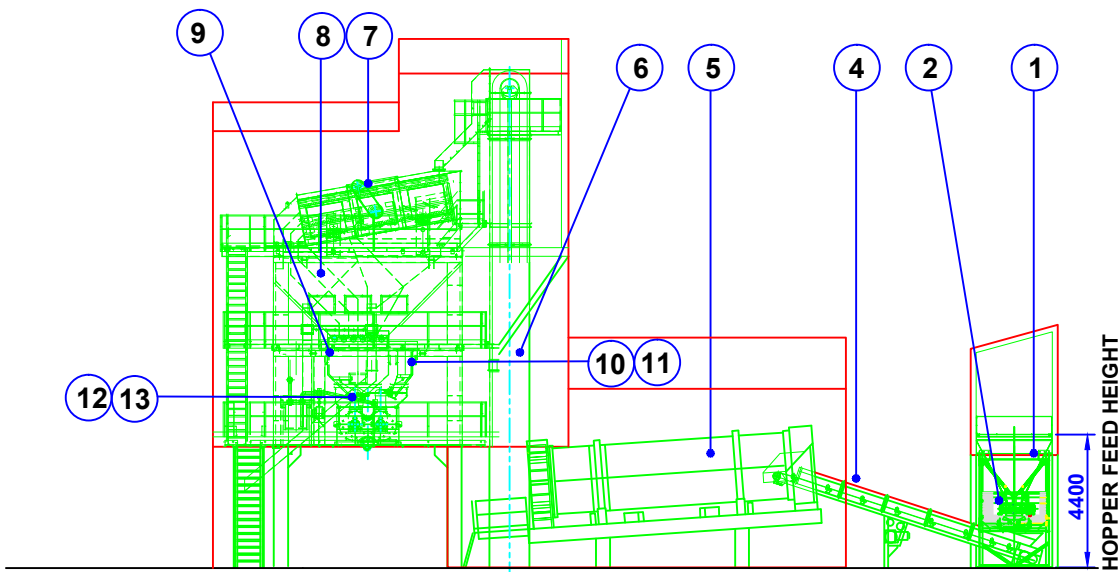
REF	DESCRIPTION
1	8 COVERED COLD FEED HOPPERS - 11 cu m TRIMMED 15 cu m HEAPED
2	8 BELT FEEDERS 650 WIDE X 2200 CRS - VARIABLE SPEED
3	650 WIDE COLLECTING CONVEYOR
4	650 WIDE COVERED DRYER FEED CONVEYOR
5	2.2 DIA x 8.0 LG ROTARY DRYER - 4 x 15 KW DRIVES & BURNER
6	500 WIDE BUCKET ELEVATOR - TWIN STRAND CHAIN - 15 KW MOTOR
7	1.8 x 5.0 x 3.5 DECK SCREEN - 2 BEARING - 18.5 KW MOTOR
8	6 COMPARTMENT STORAGE HOPPER - 40 TONNE CAPACITY (EACH COMPARTMENT)
9	AGGREGATE WEIGH HOPPER - 2250 KGS CAPACITY
10	FILLER WEIGH HOPPER - 450 KGS CAPACITY
11	BITUMEN WEIGH HOPPER - 350 KGS CAPACITY
12	BITUMEN RING MAIN & INJECTION SYSTEM - SPRAY BAR DISCHARGE
13	2250 KGS CAPACITY PADDLE MIXER - 2 x 22 KW GEARED MOTORS
14	BUNDED FUEL TANK
15	DUST COLLECTION - BAG FILTER & SKIMMER - 72,590 cu m / hr
16	SWITCH HOUSE (PLANT CONTROLLED REMOTELY FROM OFFICE)
17	80 TONNE CAPACITY IMPORTED FILLER SILO
18	80 TONNE CAPACITY RECLAIM FILLER SILO
19	210 TONNE MIXED MATERIAL STORAGE SYSTEM (50/70/90)
20	2 x 100 TONNE CAPACITY BITUMEN TANKS WITH PUMPS & PIPEWORK

Legend

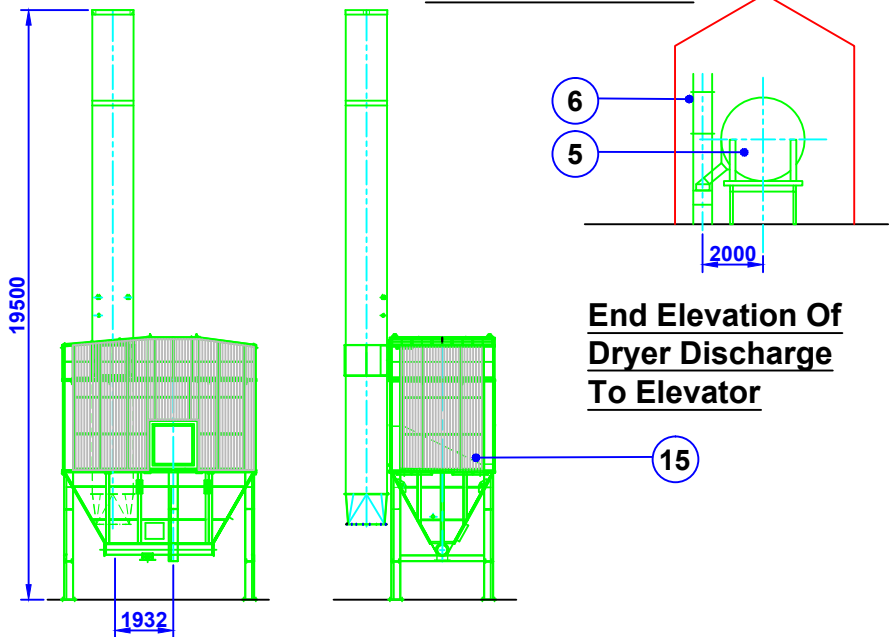
 Extent Of Building Sheeting





Plan View Of Plant



View On "B" - "B"



Side & End Elevations Of Bag Filter



6 Forbes Business Centre  
Kempston Way  
Bury St Edmunds  
Suffolk  
IP22 7AR  
t: 01284 764 688  
e: admin@pdeconsulting.co.uk  
w: www.pde.co.uk

Client	Eurovia Roadstone		
Project	Medina Wharf		
Title	Proposed GA Of Asphalt Plant		
Drawn By	D.T.	Scale	1:250
Date	22/10/12	Drawing No	MDN/011