

MINUTES OF QUALITY TRANSPORT PARTNERSHIP EXECUTIVE COMMITTEE

Held on Friday 19th November 2010 at Enterprise House, Newport

ATTENDEES:

Morris Barton - Chamber of Commerce
David Bottom - QTP Chair
Cllr Edward Giles - Isle of Wight Council
Peter Hayward - Isle of Wight Council
Rachel Mills - Isle of Wight Council
David Rogers - IW Bus Users Group
Hugh Walding - IW Friends of the Earth
Chris Wells - Isle of Wight Council

APOLOGIES:

Marc Morgan-Huws – Southern Vectis

1. CURRENT SITUATION

Chris Wells (CW) gave a presentation on the current QTP format and operation. The group has not met for some time but at the last meeting the group agreed a revised operational structure comprising of separate operator and user groups reporting to a central main group.

2. ISSUES

A number of issues were identified:

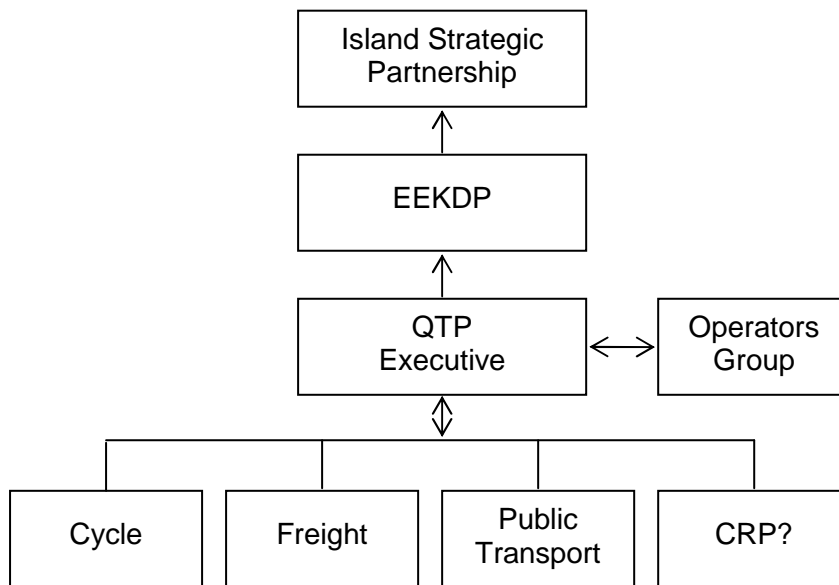
- a. Confused debate – often discussions more operational/site specific than strategic.
- b. Low attendance at meetings – particularly operators (which may be attributed to level of debate – see above).
- c. Main group – sometimes difficult to gain consensus due to wide range of groups, interests and expertise.
- d. Bus users group – now expanded to ‘public transport group’.
- e. CRP and freight – unsure whether classed as users or providers?
- f. CRP – considered successful as have common purpose.
- g. Operators – difficult to discuss commercially sensitive issues.
- h. Ferry – no user group or forum to discuss issues.
- i. Council – already has strong links with operators.

3. FUTURE?

The group discussed possible ways forward for the QTP and it was proposed that:

- a. User Groups to hold their own meetings and forward and any strategic issues to the QTP Executive.
- b. The Executive to ‘sift issues’ and forward appropriate strategic issues to Operator Group for discussion.

c. Executive to feedback to User Groups.



d. Individual user groups = cycle, freight, public transport, CRP (where QTP members).

e. Operator group = Southern Vectis, Wightlink, Red Funnel, Hovertravel, Island Line, Isle of Wight Council.

f. Executive = as existing ie:

- QTP Chair
- A partner to represent the business community.
- A partner to represent the specialist transport organisations.
- A partner to represent the user groups.
- A representative from the Council (Cabinet Member for Transport).

g. Chamber of Commerce to arrange and stage meetings of Executive and Operators.

h. Full QTP meeting to be arranged for January 2011 to discuss proposed new working arrangements and draft LTP3.