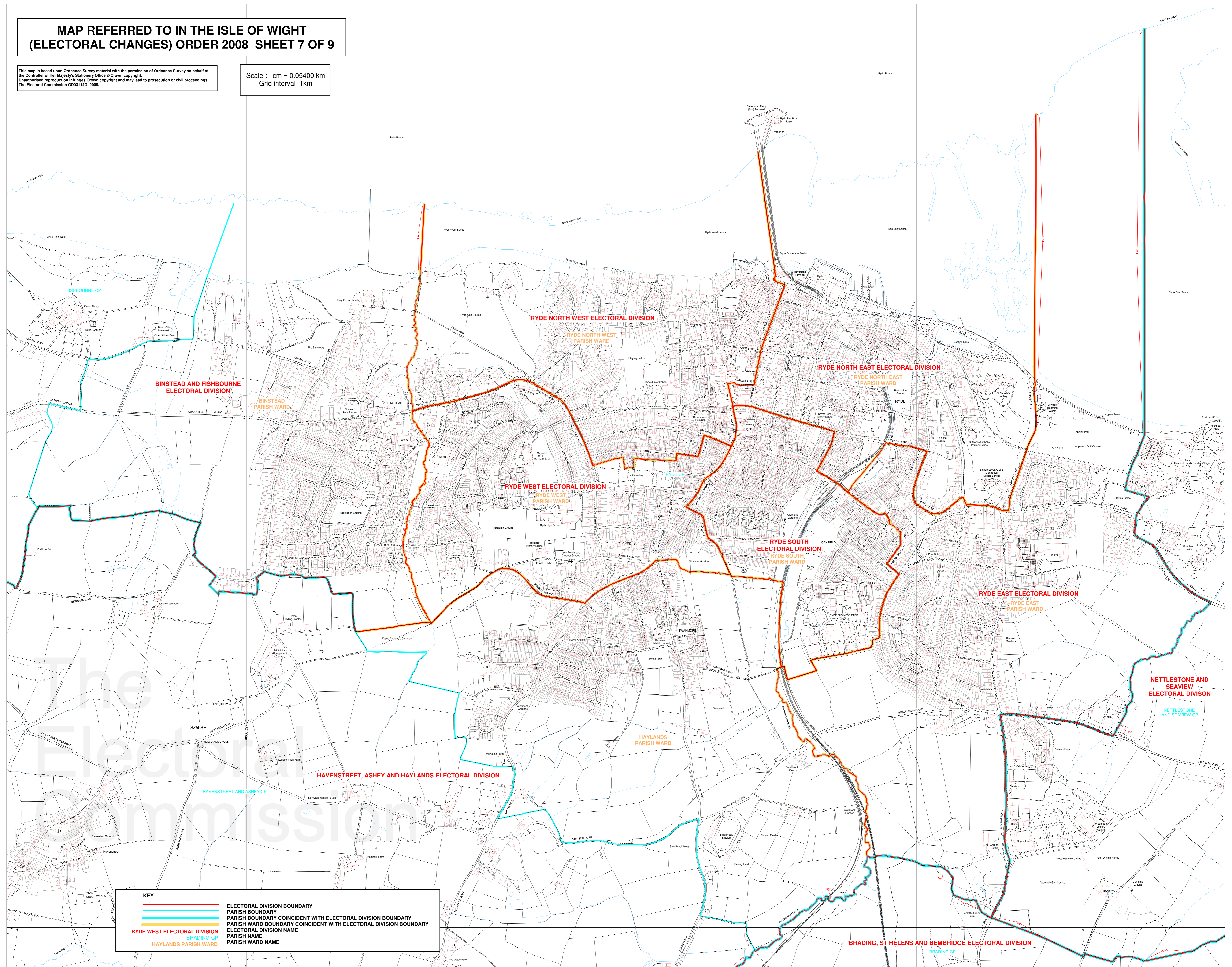


**MAP REFERRED TO IN THE ISLE OF WIGHT
(ELECTORAL CHANGES) ORDER 2008 SHEET 7 OF 9**

This map is based upon Ordnance Survey material with the permission of Ordnance Survey on behalf of the Controller of Her Majesty's Stationery Office © Crown copyright.
Unauthorized reproduction infringes Crown copyright and may lead to prosecution or civil proceedings.
The Electoral Commission GD03114G 2008.

Scale : 1cm = 0.05400 km
Grid interval 1km



KEY	
	ELECTORAL DIVISION BOUNDARY
	PARISH BOUNDARY
	PARISH BOUNDARY COINCIDENT WITH ELECTORAL DIVISION BOUNDARY
	PARISH WARD BOUNDARY COINCIDENT WITH ELECTORAL DIVISION BOUNDARY
	ELECTORAL DIVISION NAME
	PARISH NAME
	PARISH WARD NAME