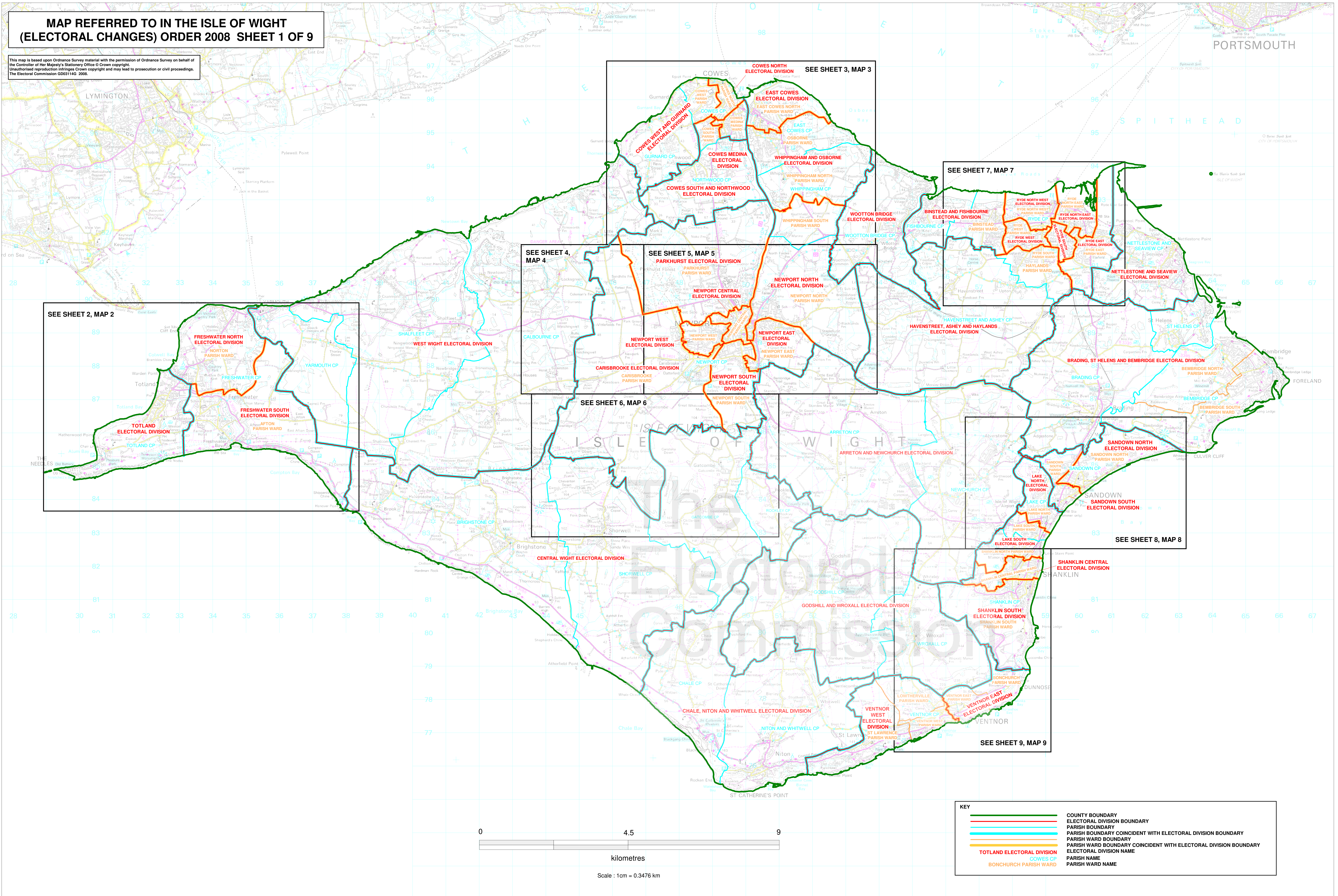


# MAP REFERRED TO IN THE ISLE OF WIGHT (ELECTORAL CHANGES) ORDER 2008 SHEET 1 OF 9

This map is based upon Ordnance Survey material with the permission of Ordnance Survey on behalf of the Controller of Her Majesty's Stationery Office © Crown copyright. Unauthorised reproduction infringes Crown copyright and may lead to prosecution or civil proceedings. The Electoral Commission GD0314G, 2008.



SEE SHEET 2, MAP 2

FRESHWATER NORTH ELECTORAL DIVISION

FRESHWATER SOUTH ELECTORAL DIVISION

TOTLAND ELECTORAL DIVISION

SEE SHEET 4, MAP 4

SEE SHEET 5, MAP 5

SEE SHEET 6, MAP 6

SEE SHEET 7, MAP 7

SEE SHEET 8, MAP 8

SEE SHEET 9, MAP 9

0 4.5 9

kilometres

Scale : 1cm = 0.3476 km

KEY	
	COUNTY BOUNDARY
	ELECTORAL DIVISION BOUNDARY
	PARISH BOUNDARY
	PARISH BOUNDARY COINCIDENT WITH ELECTORAL DIVISION BOUNDARY
	PARISH WARD BOUNDARY
	PARISH WARD BOUNDARY COINCIDENT WITH ELECTORAL DIVISION BOUNDARY
	TOTLAND ELECTORAL DIVISION
	BONCHURCH PARISH WARD
	COWES CP
	PARISH NAME
	PARISH WARD NAME