

Waste that **can** be recycled...



goes in the wheelie bin or in the clear sacks provided.



Paper:

Newspapers, magazines, catalogues, phone directories, yellow pages, junk mail, envelopes, writing and computer paper, wrapping paper, greetings cards.



Plastic bottles:

Fizzy drinks, squash, cleaning products, milk bottles, shampoos etc.



Plastic tubs:

Yoghurt pots, margarine, food containers etc.



Plastic bags.



Glass:

Bottles and jars.



Cardboard:

Packaging, cereal boxes, toilet and kitchen roll tubes, tea bag boxes etc.



Metals:

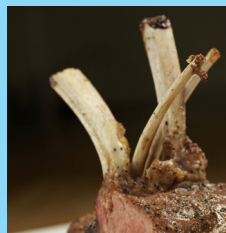
food tins, drinks cans, aluminium foil.

It helps if all bottles and tins are empty and rinsed out. You do not have to remove labels.

Waste that can go into the **food** caddy



All cooked and uncooked food.



Fish and meat bones.



Tea bags/ coffee grounds.



Egg shells.



Fruit and vegetable peelings.

Waste that **cannot** be recycled...

goes in your dustbin (black sack).



Vacuum cleaner bags.



Nappies/
sanitary items/
textiles.



Glass cookware/
mirrors.



Paper/foil contaminated with food.



Cling film/
bubble wrap.



Broken crockery.



Cold ash.



Pill packets.



Polystyrene.



Sweet wrappers/
crisp packets/
Pringles tubes.



Shredded paper.

Waste we would like you to take to a recycling site



**Old clothing/
shoes/
handbags.**



Batteries.



**Low energy
light bulbs.**



**Mobile
phones.**



**CDs and
DVDs**



**Printer
cartridges.**



Wood.



**Electrical
items.**



**Large metal
items.**



**Bricks/soil/
rubble.**



**Garden
waste.**



Books.