

APPENDIX 1 TO PAPER B

Partnership Framework for: The Isle of Wight Children & Young People's Trust

This paper outlines the Isle of Wight's Children & Young People's Trust Board partnership arrangements for Children and Young People's provision and the partnership structure put in place to take responsibility for the work of the Island's Children & Young People's Trust.

These arrangements are as an unincorporated association comprising membership from the public and voluntary sectors.

Vision

By 2020 to be: "A progressive Island built on economic success, high standards and aspirations and a better quality of life for all".

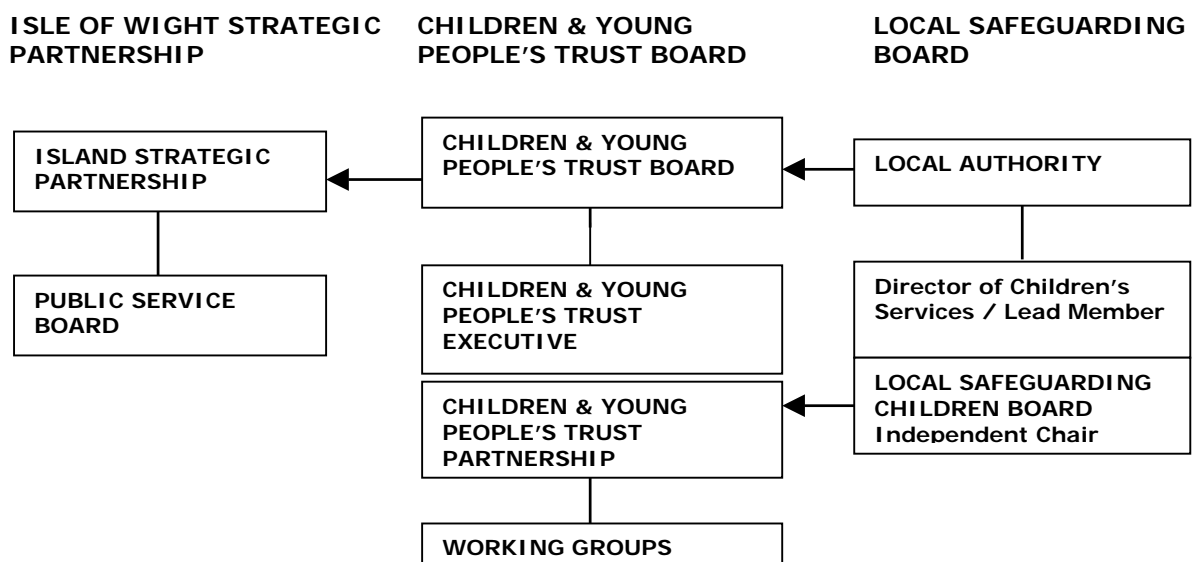
Objectives

To improve outcomes across the five headings of: Being Healthy; Staying Safe; Enjoying and Achieving; Making a Positive Contribution and Economic Well-being by: giving children and young people the freedom and opportunity to achieve their full potential and equipping them with the skills to make an effective transition into a successful and healthy adult life.

Purpose

- To provide a framework of accountability for the commissioning, delivery and improvement of effective frontline integrated services.
- To ensure outcomes are improved for children and young people by jointly addressing issues of capacity, accountabilities, roles and responsibilities, and impact.
- To communicate and achieve the Children & Young People's Trust objectives for the improving outcomes for children and young people on the Isle of Wight through the delivery of Children & Young People's Plan (CYPP).
- To hold constituent agencies to account in respect of their decision making and accountability for functions and resulting outcomes for children and young people.

Partnership Structure



The IOW Children & Young People's Trust Board heads the governance arrangements for the Children and Young People's provision and is responsible for the work of the Island's Children & Young People's Trust.

It will drive and quality assure the children's services work programme through the operation of:

Children & Young People's Trust Executive
Children & Young People's Trust Partnership

Through the membership and remit of the partnership it will link and relate to:

National Health Service

Rural Community Council

Police

The Isle of Wight Council

Adult Services
Environment and Transport
Culture and Tourism
Economic and Housing
Safer Communities Partnership
Children's Services
Schools

IOW College

Learning and Skills Council

Government Initiatives

Connexions
Sure Start
Children Fund
Teenage Pregnancy

The IOW Children & Young People's Trust Board will give strategic direction to the partnership that will be responsible to the IOW Children & Young People's Trust Board for the achievement of the targets and objectives in the Children and Young People's Plan.

The IOW Children & Young People's Trust Board will review the membership, structure and terms of reference of the partnership on a regular basis.

Terms of Reference / Activities for the Isle of Wight Children & Young Trust Board

1. The IOW Children & Young People's Trust Board partners each retain their own executive authority, the Board provides a forum through which partners may agree

shared aims and priorities to which the participant organisation's resources can be directed.

2. The IOW Children & Young People's Trust Board may receive reports from, and may submit recommendations or advice to, any of its member organisations.
3. The IOW Children & Young People's Trust Board will report on an annual basis to the Island's children, young people and their families, both through an annual public meeting and through a written review of progress against objectives.
4. The IOW Children & Young People's Trust Board, alongside member agencies, will consider reports and recommendations from regulatory bodies, and where possible enter into joint action planning to improve outcomes across the 5 headings for children and young people.
5. The IOW Children & Young People's Trust Board partners will give consideration to the alignment or pooling of budgets where to do so would both result in improved outcomes and deliver value for money through increased efficiency.
6. The IOW Children & Young People's Trust Board may establish sub-groups to lead on the development of specific initiatives or service re-configuration on behalf of the partnership. The membership and purpose of these sub-groups will be determined by the IOW C&YPT Board. These sub-groups will submit any recommendations to the IOW C&YP Trust Board for endorsement.
7. The Children & Young People's Trust Board Members, on behalf of their agencies, will:
 - Plan services in line with the Children & Young People's Plan (CYPP) priorities and targets and oversee the overall delivery of Children's Services
 - Provide the leadership and decision making required to achieve those targets through individual agency resource allocation and joint commissioning
 - Promote the added value and cost effectiveness of partnership working
 - Ensure that all delivery bodies make appropriate commitments to the delivery of outcomes, highlighting any operational barriers which could inhibit the success of the CYPP. (For example where a stakeholder doesn't agree or services may need to be decommissioned)
 - Oversee the setting of financial and performance management arrangements. Ensuring effective risk assessment processes are in place which have positive impact on performance and outcomes.
 - Communicate the vision and strategy and its progress to the Island's community
 - Understand the priorities and aspirations of the children, young people and families of the Isle of Wight
 - Oversee the development of the Island's partnership structure in line with the partnership framework agreed by the constituent bodies
 - Regularly review and refine that structure and its own terms of reference
 - Aspire to be an example of partnership best practice
 - Be open to new ideas and learn from other examples of best practice

Trust Board Membership

It is proposed the Trust Board will have 13 members drawn from the voluntary/community, public sectors and children/young people representation. These members will act as a group of governors to the Trust.

Children & Young People's Trust Board:

- (i) Lead Member for Children
- (ii) Further Member representative (based on knowledge, skill or interest)
- (iii) Further Member representative (based on knowledge, skill or interest)
- (iv) Chair of the NHS Trust
- (v) Chair of the Executive
- (vi) Chair of South Central Connexions
- (vii) Chair of the Rural Community Council
- (viii) Chair of the Learning and Skills Council
- (ix) Chair of Wessex Youth Offending Team
- (x) Governor Representative
- (xi) Police Representative
- (xii) Young People's Representatives
- (xiii) Parent/Carer Representatives

((xii) should be approached in imaginative way rather than as nominal contributions)

Terms of Reference /Activities for the Isle of Wight Children & Young People's Trust Executive

1. The Children & Young People's Trust Executive will act as a steering group to the Children & Young People's Trust Board.
2. The IOW Children & Young People's Trust Executive may also establish sub-groups to lead on the development of specific initiatives or service re-configuration on behalf of the partnership. The membership and purpose of these sub-groups will be determined by the IOW C&YPT Board/ Executive. These sub-groups will submit any recommendations to the IOW C&YP Trust Board for endorsement.
3. The Children & Young People's Trust Executive will:
 - Produce reports to the Trust Board and key partnerships about the performance towards the delivery of the Children and Young People's Plan. These reports will include recommendations about any areas of poor performance, any additional resources required to deliver targets or priorities and recommendations to amend any targets for service delivery. It will only highlight key areas requiring further strategic action by the Trust Board on the basis of exception or excellence. The Children's Services Director will be responsible for presenting these reports to the IOW Children & Young People's Trust Board.
 - Ensure that quarterly performance management reports are submitted to the Children & Young People's Trust Board. Any performance management or strategic issues which cannot be resolved by the key partnerships will be referred to the Children & Young People's Trust Board.

Trust Executive Membership

Members of the Executive will be drawn from senior members of the constituent agencies

Children & Young People's Trust Executive:

- (a) Director of Children's Services
- (b) Children & Young People's Trust Development Adviser
- (c) Head of Cultural and Leisure Services
- (d) Director of Safer Communities
- (e) Head of Children and Family Services
- (f) Head of Learning Effectiveness
- (g) Associate Director (Mental Health and Learning Disabilities)
- (h) Associate Director (Child and Family Health Care)
- (i) Chief Executive Connexions
- (j) Head of Wessex Youth Offending
- (k) Children's Services Lead – Hants and Isle of Wight Strategic Health Authority
- (l) Medical Director / Consultant Paediatrician Isle of Wight Health Care Trust
- (m) Director of Public Health
- (n) Head Teacher Representative
- (o) Head Teacher Representative
- (p) Head Teacher Representative
- (q) Isle of Wight College Principal

Terms of Reference /Activities for the Isle of Wight Children and Young People's Trust Partnership

1. The full Partnership will comprise representatives of all the agencies who support children and young people on the island, as currently represented by the membership of the strategic, implementation and process shadow boards.
2. The role is to seek joint planning, commissioning, and coherent and value for money provision of services to children, young people and their families, that are child/young people centred, and which prevent exclusion and enable success for all.
3. The Children & Young People's Trust Partnership will:
 - Engage with children, young people, and their families, as part of the promotion of well being.
 - Undertake action planning to secure service provision that reflects the needs of local communities.
 - Undertake effective self-review as part of the performance management arrangements.
 - provide the point of co-ordination and overview of the integration of services to children and young people reporting to the Executive.

Trust Partnership Membership

Children and Young People's Trust Partnership:

1. Isle of Wight Council
Children's Services - early years and childcare partnership, children's centres, extended schools, the local youth strategy, school improvement, access and

inclusion and special educational needs LDD. Family and looked after children services.

Safer Communities

Adult and Community Services

Housing

2. Youth Offending
3. Schools - School Cluster representatives
4. Health – primary, secondary and acute services
5. Government Initiatives - Connexions, Teenage Pregnancy and the Children's Fund
6. Business Support – finance, contracts/procurement, informatics, legal, communication, ITC
7. Police
8. Voluntary & Community Sector
9. Relevant Focus/Consultative Groups of: children & young people / parents/carers (this should be approached in imaginative ways rather than as nominal contributions)

The Isle of Wight Local Safeguarding Children Board

The Local Safeguarding Children Board (LSCB) has a particular role to play in the partnership structure of accountabilities. The establishment of the Isle of Wight LSCB is an important element to improve safeguards for children and young people put in place by the Children Act 2004 – and fulfils sections 13-16 of the Act. The LSCB and its activities are part of the wider context of the Children's Trust arrangements.

The LSCB has a key role to play in the scrutiny and holding to account of partner agencies for the safeguarding Island children and young people. This is a key theme as outlined below in the CYPP.

For its developing role, remit and membership see Appendix 1.

Other Specifications

Invited Observers

GOSE

DfES

CSCI

Nature and Frequency of Board Meetings

The Board will meet at quarterly, although it will have the ability to meet more often if required.

Administration

Isle of Wight Council has the duty to ensure that Isle of Wight Children & Young People's Trust Board partnership is established and maintained. The Council will provide administrative support to the working of the Board.

Agendas and supporting documents will be issued at least one working week before the meeting. Minutes will be produced and circulated within ten working days of the meeting. The minutes will be public documents and will be posted on the Children & Young People's Trust web site.

Accountability

The IOW Children & Young People's Trust Board is accountable to its constituent agencies, its regulators. Through regular reports and published minutes it aims to be accountable to the children, young people and families of the Isle of Wight. It will at all times seek to ensure that it is representative of and understands the priorities of the Island people and is responding to their views and interests.

The IOW Children and Young People partnership values openness. The partnership will aim to use plain language, communicate in a timely way, and to involve the public in meetings.

Each participant Board member remains accountable to his or her parent organisation.

Chairs

The Chair of the IOW Children & Young People's Trust Board shall be the Local Authority Lead Member for Children. The Director of Children's Services chairs the Executive and the Partnership will be drawn from and agreed by the members of the Partnership.

Principles

In pursuing these activities, the IOW Children & Young People's Trust Board will, at all times, be guided by the following principles:

Outcomes – ensuring that the Board's agenda and decision making focus on adding value and making tangible progress in improving the 5 outcomes for children and young people.

Equality – addressing the needs of all sectors of our Island community and seeking outcomes that promote genuine equality of opportunity for all.

Sustainability – ensuring that the services delivered or reconfigured are sustainable

Cohesion – ensuring that Island children and young people have, without exception, a sense of ownership of and engagement with the process that transforms current provision into a Children & Young People's Trust

Key Themes that apply from the Children & Young People's Plan

1. Safeguarding Children and Young People and Promoting their Welfare:

All plans, policies, procedures and services will protect children from maltreatment, prevent impairment of children's health and development and ensure children grow up in circumstances consistent with the provision of safe and effective care.

2. Diversity:

People from minority groups will experience a difference and will achieve in line with normal expectations.

Children having been treated equally will enter adulthood with a sense of belonging and being a responsible citizen of the Island.

All policies produced and services delivered will be subject to an impact assessment in respect of black and ethnic minority groups and disability.

3. Accessibility:

Rural Proofing: Services delivered locally from user friendly accessible access points (multi-agency community cluster groups).

Accessibility via e-government initiatives.

4. Not-for-Profit sector:

A mutual improvement in joint professional capacity through increase in contractual partnerships and more secure funding streams.

Participation of the sector is in line with the Compact Code of Good Practice on Consultation and Policy Appraisal.

Objectives and Performance Management

The work programme of the IOW Children & Young People's Trust will be determined by the priorities and objectives set out in the CYPP aligned to the Community Strategy, Corporate Plan (Aim High), Local Area Agreement and Local Public Service Agreement.

The CYPP will be revised and up-dated every year in the light of the Annual Performance Assessment or the Joint Area Review.

Performance will be managed within a shared performance management framework and informed by the data inputted to Corvu (the IOW Council Performance Management Software tool).