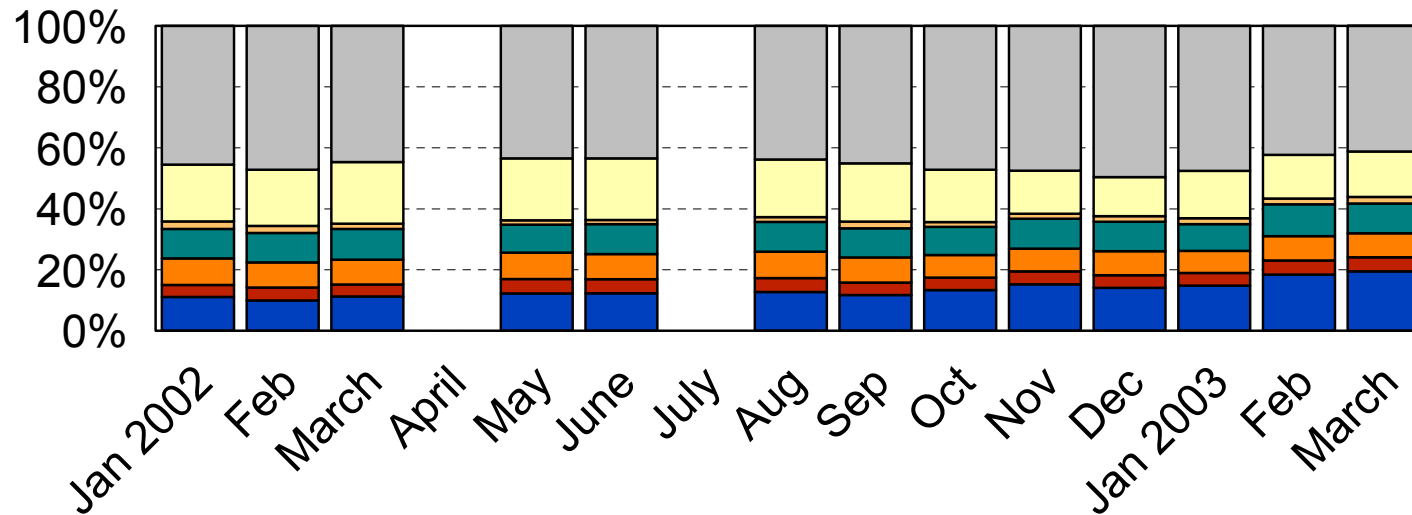


Households in Temporary Accommodation

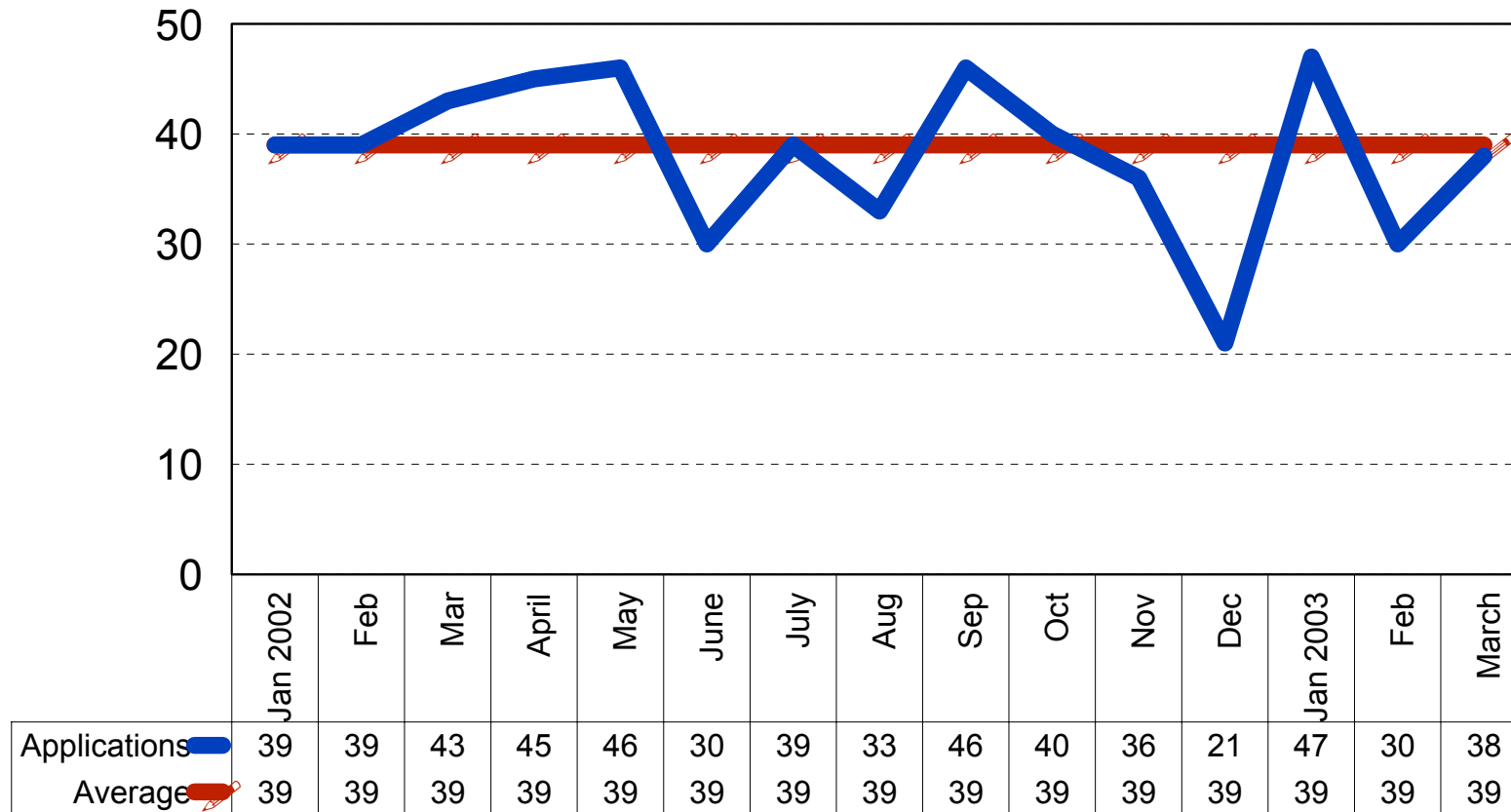
2002 - 2003



Homeless at Home	151	166	159		156	159		162	165	184	178	190	196	154	152
B&B	62	65	72		73	74		70	70	67	53	49	64	52	55
Refuge	8	8	6		5	5		6	8	6	6	7	8	7	8
RSL TA	32	34	36		33	36		36	35	36	37	37	36	38	36
Council TA	29	29	29		31	30		32	30	29	28	30	30	29	29
Leased by RSL	13	15	14		17	17		17	15	16	16	16	17	17	17
Leased by Council	37	35	40		44	45		47	43	52	57	54	61	67	72

Chart 1

Homelessness Applications



2001-2003

Chart 2

Households in Bed and Breakfast

2002 - 3

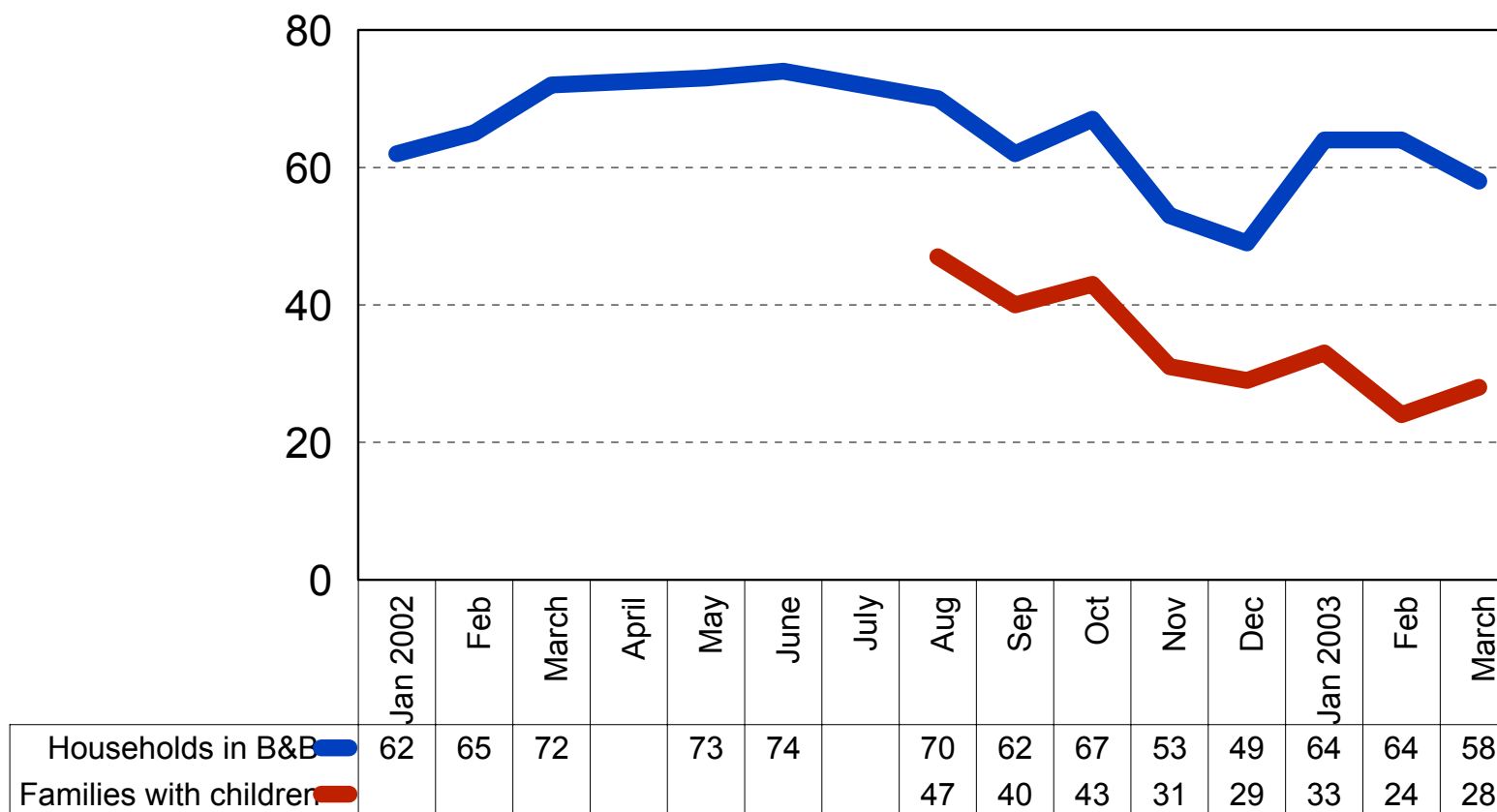


Chart 3

Bed & Breakfast Projections

2003 - 4

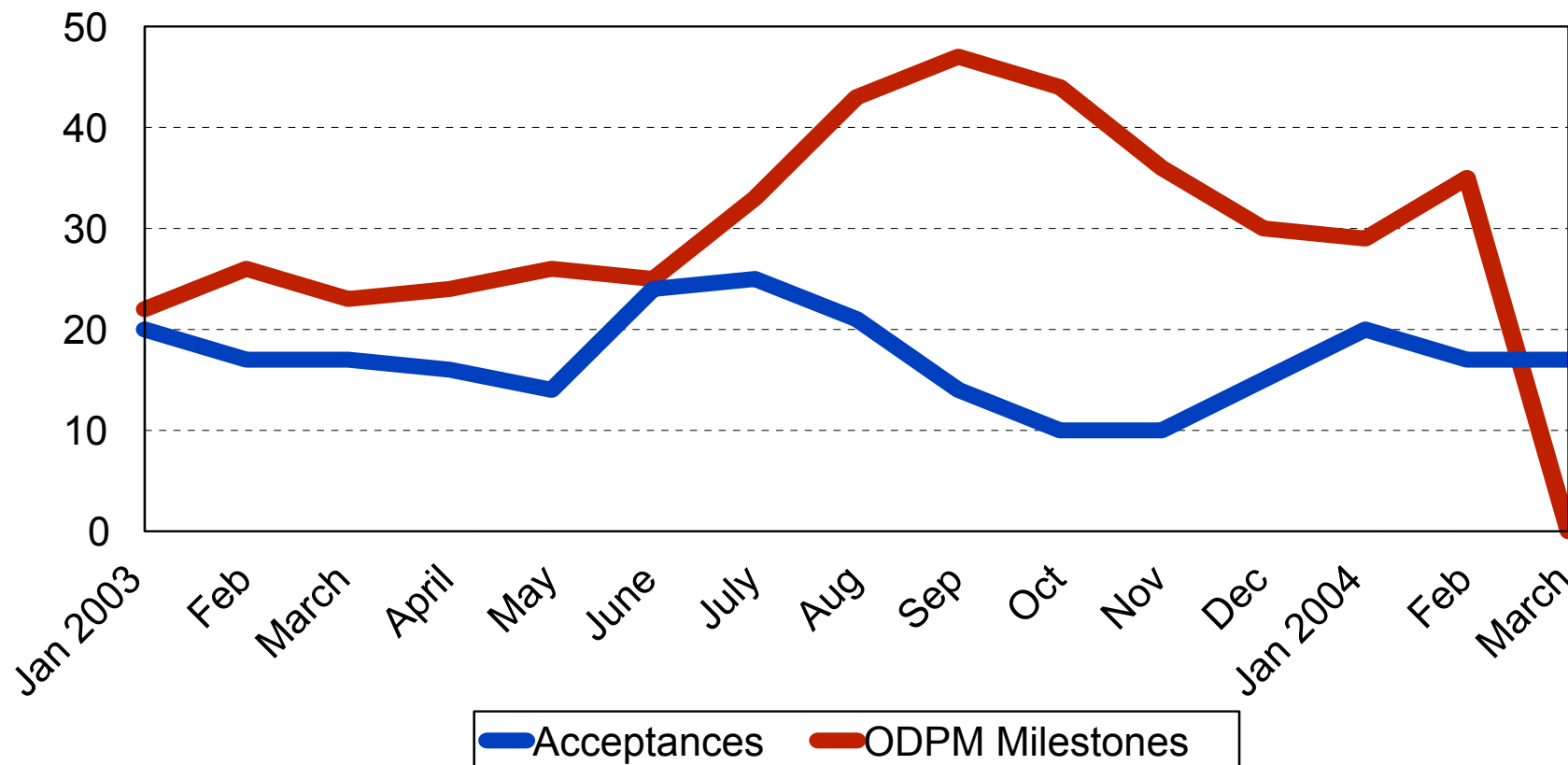


Chart 4

Households in Temporary Accommodation 2002-3

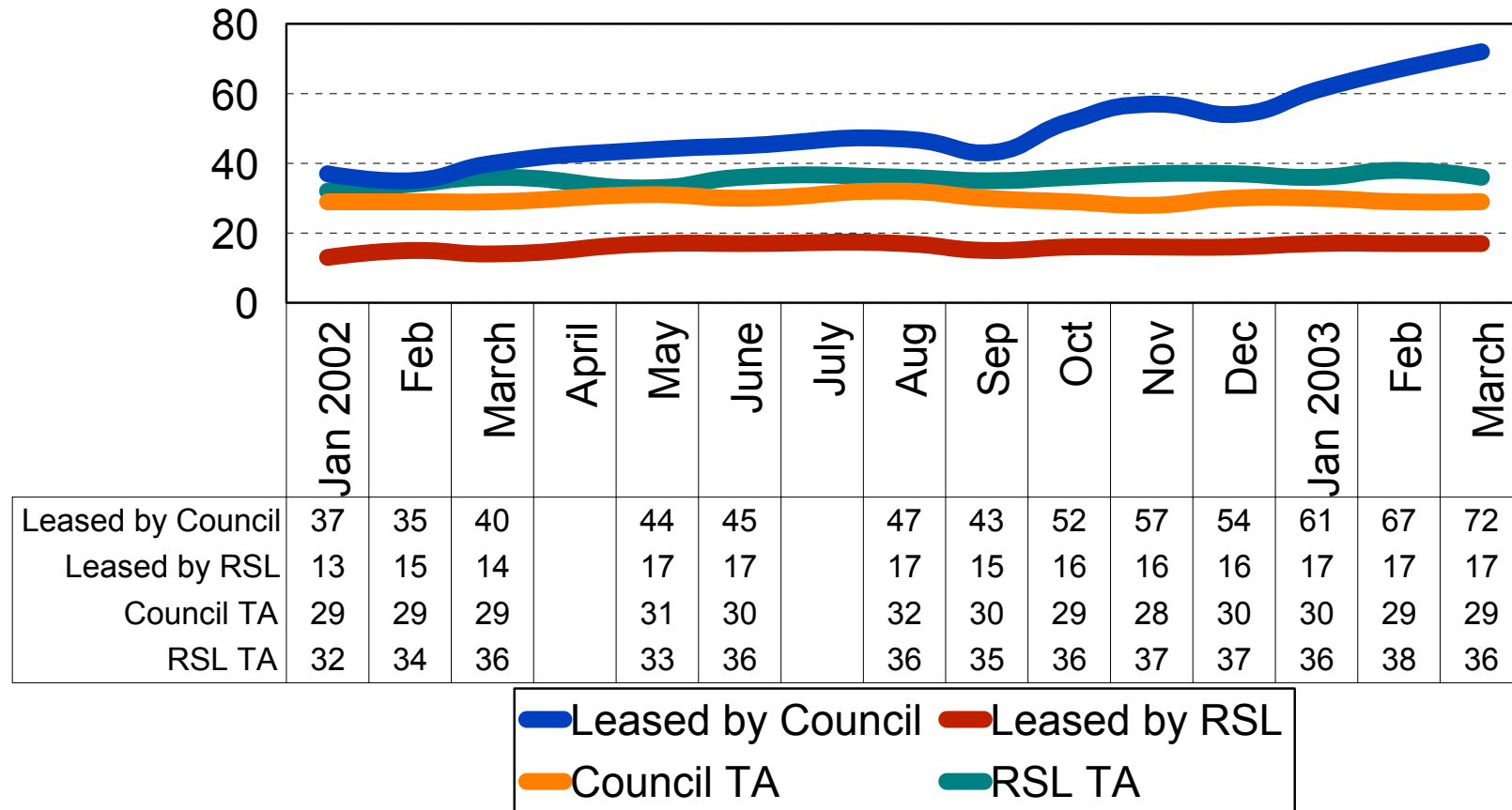


Chart 5

Homeless at Home

2002-3

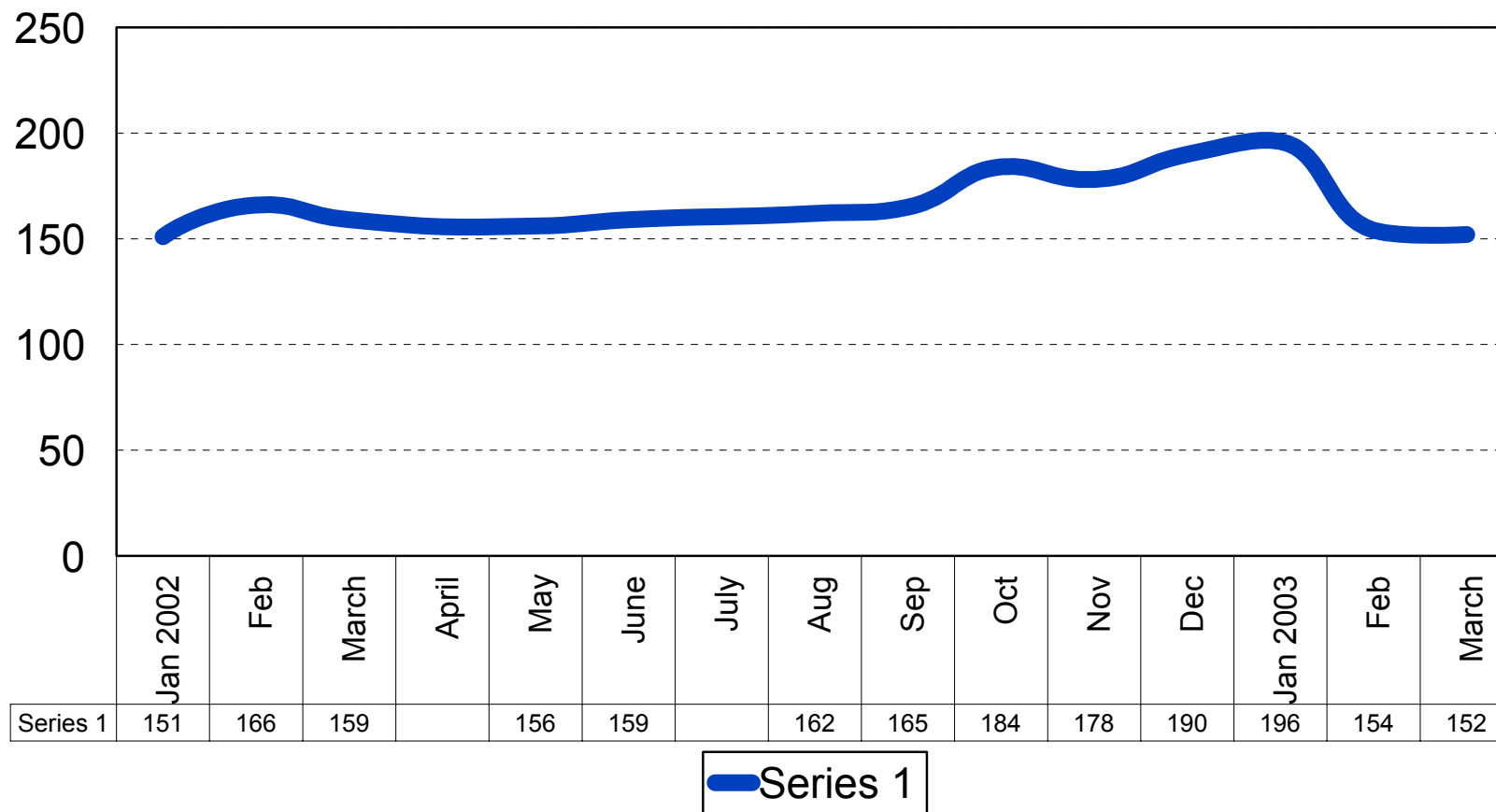


Chart 6

Households in Refuge

2002-3

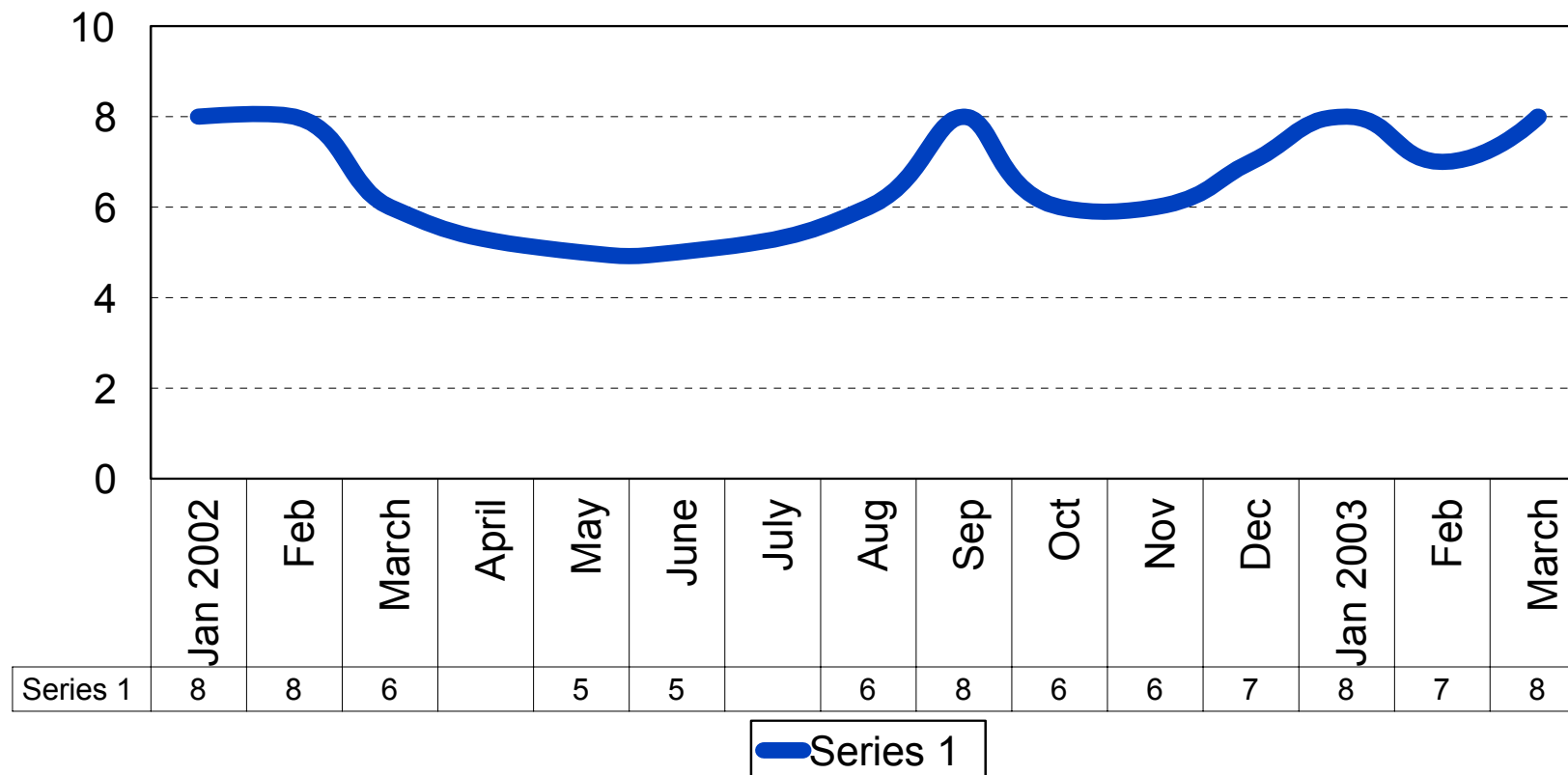


Chart 7