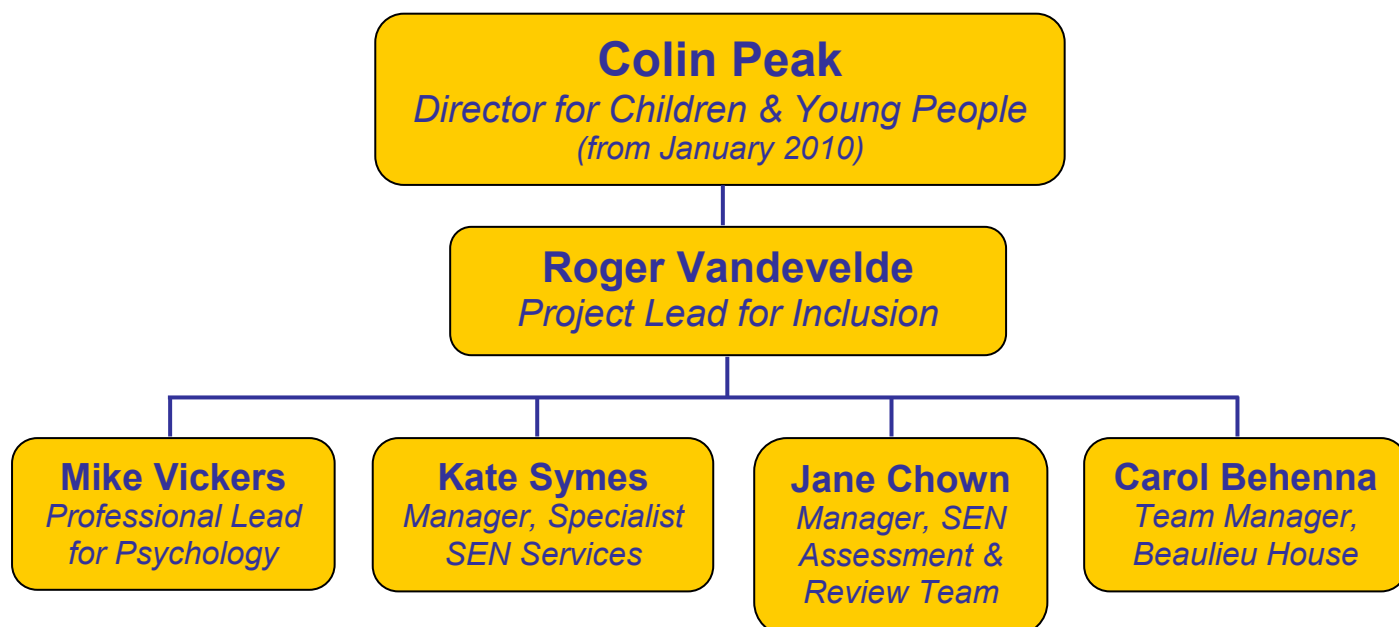


# SEN SERVICES



## Information for Schools



## **Beaulieu House**

Beaulieu House is a respite residential unit for children with severe learning disabilities or health issues. Referrals are made to family support panel via the young person's social worker.

It provides activities and works closely with the special education schools.

### **Staff:**

Carol Behenna      Team Manager

**Contact: Beaulieu House, Fairlee Road, Newport, PO30 2EW  
Tel: 533024**

## **CLASS (Curriculum, Language & ASD Support Service)**

Class is a team of six who bring together their extensive experience to support children, young people and families, usually in schools. Recommendations have practical application: they are underpinned by a knowledge of psychology and the development of learning; they are shaped by years of experience in working with children who have an autism spectrum disorder which hinders the development of learning and social skills. The aim is to help children and young people experience success within, and beyond, the school setting.

### **Staff:**

Dr Michael Vickers	Manager
Clare Bowen	Team Leader
Heather Blake	Communication Support Assistant
Deb Jones	Communication Support Assistant
Viv Kearney	Communication Support Assistant
Caroline Martin	Communication Support Assistant
Carol Platt	Resource Officer

**Contact: Thompson House, Sandy Lane, Newport, PO30 3NA  
Tel: 533523**

## Early Support Team – SEN/LDD

Works to support children 0-5 with SEN/LDD in Early Years Settings, the home and during transition into school.

### Staff:

Kate Symes	Manager
Sonja Iversen } Kathy Pugh }	Joint Professional Leads and Foundation Stage Inclusion Officers
Sharon Leadbetter	SEN Development Worker
Kay Farrow	SEN Development Worker
Amanda Harris	SEN Development Worker
Anita Pitman	SEN Development Worker
Esta Ford	SEN Development Worker
Melanie Oxley	SEN Development Worker

**Contact: Thompson House, Sandy Lane, Newport, PO30 3NA**  
**Tel: 533523**

## Educational Psychology Service

The Educational Psychology Service is designed to meet the needs of children and young people aged 0-19 years. Its aim is to promote inclusion through the application of psychology across Early Years' settings and schools. In addition to meeting children's special educational needs there is work to support the wellbeing of children and young people in line with the Every Child Matters (ECM) agenda. The Service seeks to work in an empowering way; it engages in multi-disciplinary activities to safeguard and secure positive outcomes for children, young people and families.

### Staff:

Dr Michael Vickers    Professional Lead for Psychology

Staffing to be confirmed Spring 2010 following recruitment.

**Contact: Thompson House, Sandy Lane, Newport, PO30 3NA**  
**Tel: 533523**

## SEN Assessment & Review Team

- Administer the statutory process for statementing children with severe and complex special educational needs and the annual reviews of those statemented children.
- Advise schools, parents and other agencies on the statutory process.
- Attend Annual Reviews, LAC Reviews and Case conferences etc. as appropriate.
- Represent the Local Authority at courts and tribunals concerning appeals and actions regarding the Authority's duties towards individual statemented children.
- Train school and LA staff on matters relating to the statutory processes concerning statementing.

### Staff:

Jane Chown	Manager SEN Assessment and Review Team	<b>823412</b>
Heidi Carden	Senior Casework Officer	<b>823456</b>
Christine Stroud	Casework Officer	<b>823470</b>
Vacancy	Casework Officer	
Christine Waldron	Support Officer	<b>823412</b>
Rona Kirk	Support Officer	<b>823404</b>
Deborah Horrocks	Data and Finance Officer	<b>823473</b>

## Sensory Support Team

Provides educational advice and support for pupils with sensory needs (hearing impairment/visual impairment) from diagnosis in a range of settings.

### What the Service can offer:

- Pre-school, home-based programmes to support families and facilitate early development.
- Educational assessment, advice and monitoring.
- Support for inclusion in mainstream settings
- Support for those pupils with additional special needs
- Provision of specialist equipment which facilitates effective communication
- Advice and support on communication issues
- Professional development and training for education personnel
- Links with other agencies, including Social Services, Health and specialist organisation
- TV/video subtitling service for school programmes.

**Staff:**

Kate Symes	Manager
Petra Robinson	Team Leader – Teacher of the Deaf
Ryan Agius	Teacher of children with visual impairment
Kim Appleby	Teacher of children with multisensory impairment
Helen Foster	Teacher of the Deaf
Jon Howard	Resource Technician
Marjo James	Teacher of the Deaf
Jacqui Taylor	Sign Language Skills Co-Ordinator (Hearing)
Helen Mount	Mobility Independence Education Officer (Vision)

**Contact: Thompson House, Sandy Lane, Newport, PO30 3NA  
Tel: 533523**

## **Specific Learning Difficulties Outreach Support Service**

The SpLD Support Service provides additional small group tuition for pupils with specific learning difficulties within national Curriculum Years 3-8. The provision is essentially pre-statutory although some pupils will have a Statement of Special Educational Needs. Referral to the Service is made through the Single Point Request for Support Panel and pupils will be considered who are within the National Curriculum Year Groups 3-6. The team also provides consultation to address individual pupil and systematic issues and training and development to meet identified needs. Provision is also made through advice and liaison with parents/carers. Further information on the Support Centres and the Referral Procedures can be found on the eduwight website.

**Staff:**

Dr Michael Vickers	Manager
Clare Bowen	Team Leader

Staffing to be confirmed Spring 2010 following recruitment.

<b>Contact:</b>	<b>Cowes</b>	<b>296609</b>
	<b>Newport</b>	to be confirmed
	<b>Ryde</b>	<b>613189</b>
	<b>Sandown</b>	<b>402261</b>

## Speech and Language Therapy

Works with children 0-5 through a preventative approach with training and support to practitioners in Early Years Settings and Children's Centres.

Advises schools, parents and other agencies on SLCN.

Works directly with school age children with SLCN – statemented/school action plus in mainstream schools, special schools and resource centres.

Works in partnership with settings to ensure a preventative approach with SLCN is secured through training to schools and providing language and communication group work to enhance SLC across environments.

### Staff:

Kate Symes	Manager
Becky Revert	Professional Lead (Resource Centres & Preventive Service)
Clare McKee	Speech and Language Therapist (Special Schools and Mainstream Schools)
Anna Bidder	Speech and Language Therapist (Mainstream Schools and Resource Centres)
Mags Berryman	Speech and Language Therapy Assistant
Jan James	Speech and Language Therapy Assistant
Jen Mew	Speech and Language Therapy Assistant
Jane Wilson	Speech and Language Therapy Assistant

**Contact: Thompson House, Sandy Lane, Newport, PO30 3NA  
Tel: 533523**

## Aiming High for Disabled Children

This programme is aimed at those disabled children with the most severe and complex needs. Funding from Government is designed to transform the way in which services are planned and delivered, with input from children, young people and their parents.

The transformation programme intends to provide more short term breaks for parents and families, helping young people to access social activities which are universal.

For more information about the programme, please contact:

Moira Henderson Short Term Breaks Implementation Officer Tel: **533523**

## Parent Partnership Service

Parent Partnership is a statutory service offering information, advice and support to parents and carers of children and young people with special educational needs (SEN).

We provide information and advice about:

- How special educational needs are identified and assessed by schools and the local authority.
- Who parents can talk to in a school or LA about their concerns.
- The SEN Code of practice, the statutory assessment process and statements.
- Parents/carers rights and responsibilities.
- Meetings and reviews about a child's needs.
- How progress is monitored and reviewed.
- What parents can do if they are not happy with a decision made about their child's SEN.

Parent Partnership also has a role in making sure that parents' views are heard and understood and that these views inform local policy and practice.

Parent Partnership is at 'arm's length' from the LA and the service we provide to parents is confidential and impartial.

### Choice Advice

The choice adviser can give parents impartial, neutral advice about the schools' admission process. The main aim of the Choice Adviser is to empower parents who may struggle with the admissions system, to make informed and realistic choices of which school to apply for.

### Staff:

Dorothy Harrington	Parent Partnership Officer
Sarah Jackson	Parent Partnership Support Officer
Tina Wroath	Choice Adviser
Sandra Smith	Admin Support

**Contact:** 11 Orchard Street, Newport, PO30 1JZ  
**Tel:** 825548  
**Website:** [www.iwpp.co.uk](http://www.iwpp.co.uk)