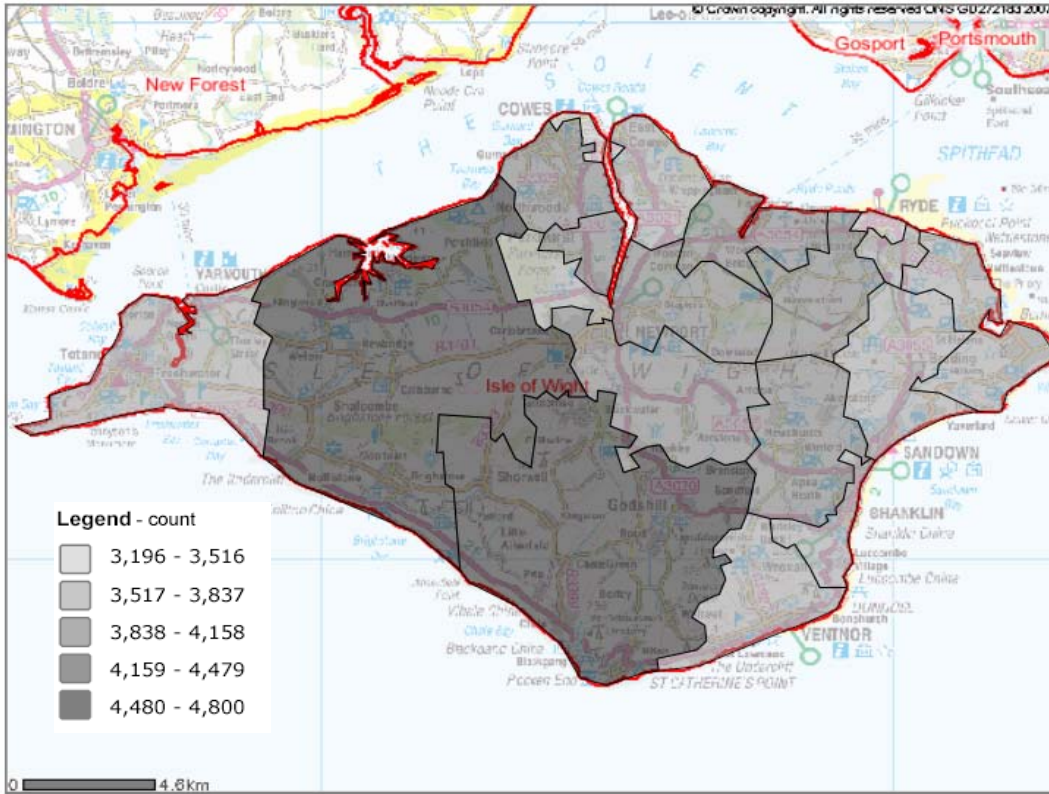


Source: Office for National Statistics

Average Consumption of Ordinary Domestic Electricity (Count, Kilowatt Hours, Jan 07 - Dec 07)

from dataset: Domestic Energy Consumption

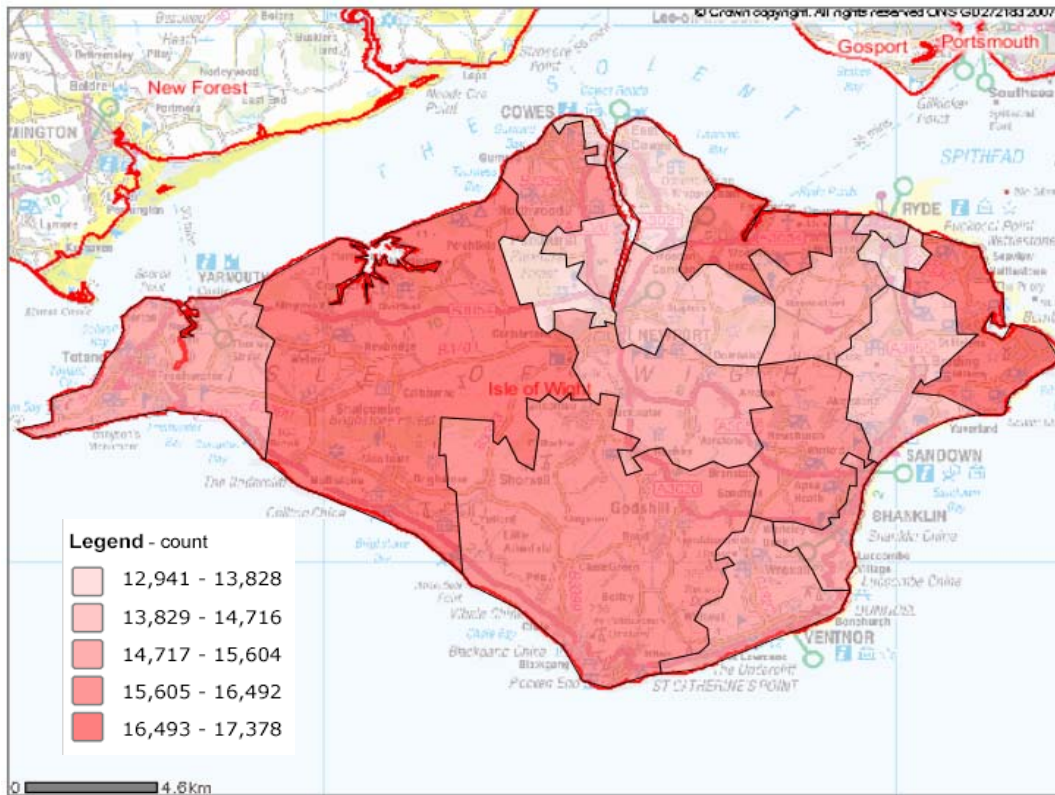
Super Output Area Middle Layer areas within the Isle of Wight (Unitary authority) -
NeSS Geography Hierarchy



Average Consumption of Domestic Gas (Count, Kilowatt Hours, Jan 07 - Dec 07)

from dataset: Domestic Energy Consumption

Super Output Area Middle Layer areas within the Isle of Wight (Unitary Authority) -
NeSS Geography Hierarchy



Source: Neighbourhood Statistics

Notes

Dataset: Domestic Energy Consumption

The figures for average consumption of ordinary electricity, Economy 7 and gas have been calculated on an unrounded count of megawatt hours accurate to 3 decimal places (not shown). These differ slightly to those that would be calculated from the rounded figures presented in the dataset to 0 decimal places. A small proportion of meter points have not been allocated MSAO information therefore the sum of the meter points and domestic energy consumption at this level does not always sum to the associated LA level. See Geographic Referencing in the fuller metadata for further information.

Source: Department of Energy and Climate Change

Last Updated: 30 June 2009

Quality status: National Statistics

