

Island Strategic Partnership

Isle of Wight Local Area Agreement 2 End of Year Report for the period April 2009 – March 2010

Contents

1. A Reflection on updates to Local Area Agreement 2 in year two.....	1
2. Executive Summary	2
2.1 Performance Overview.....	2
2.2 Overview to performance of designated indicators	3
2.3 Performance Summary for Year 2 of the Local Area Agreement 2....	4
2.3.1 Overall performance for the year.....	4
2.3.2 Performance reported by quarterly interval.....	4
2.3.3 Performance by indicator category.....	5
2.4 Performance by theme and associated Partnership Board	5
2.4.1 Thriving Island – Environment and Economic Partnership....	6
2.4.2 Healthy and Supportive Island – Health and Wellbeing Partnership.....	8
2.4.3 Safe and well-kept Island – Community Safety Partnership..	10
2.4.4 Inspiring Island – Children’s Trust.....	12
2.5 Summary of Performance.....	14
3 Conclusions.....	14
 Appendix A Highlight Reports for the 35 designated indicators.....	 15

1. A reflection on updates to Local Area Agreement 2 in year two

- 1.1 In 2009 a small selection of indicators, the performance for which would be most strongly affected by the prevailing economic circumstances, were offered a secondary period for 'Refresh'. This captured five designated indicators, with discussions and negotiations taken as a part of the review process, subsequently concluded in March 2010.
- 1.2 A group of LAA2 indicators are included in the biannual 'Place Survey', intended to measure the views and opinions of Island residents. Following due consideration to the benefits and value for money continued involvement would offer, and while the Isle of Wight Council's Annual Resident Survey offered a viable alternative, a decision was taken to not participate in the 2010 Place survey.

Subsequent to this decision the CLG has advised that, following the election, the future role of the Place Survey was being considered in the context of the new Government's agenda and that local authorities were recommended not to proceed with preparations for the survey timetabled for the autumn of 2010.

- 1.3 Since last year's report there has been some further resolution to the issues impacting the reporting of performance for some indicators, principally the establishment of baselines and targets for the second and third year's performance. However the picture is still not complete and targets remain unconfirmed for a total of one designated and five local indicators at the time of writing this report¹.

Similarly issues persist with the timeliness of confirmed available data for performance outturn across a selection of indicators, where this is provided through government agencies such as Office for National Statistics. For example NI 120 – Male/Female Mortality rates (*designated*) the earliest data currently available is approximately two years in arrears and the impact of LAA2 is unlikely to be determined until the Agreement is ended.

These various issues continue to limit the range of indicators against which performance can be reliably reported and will be identified as 'Unable to report' in this end of year report.

- 1.4 In order to provide an increased focus towards performance delivery and offer a forum for discussion and sharing of views and information, a series of meetings were introduced in the autumn of 2009. Initially for Measure Owners of designated indicators, the group was expanded to include individuals from across all agencies whose service area has involvement/potential to impact the performance achieved with LAA2. This approach is providing some helpful dialogue and focus towards the achievement of targets and rewards as well as helping to identify areas of common engagement/priority.

1 – NI 128 – User reported measure of respect and dignity in their treatment (Designated indicator)

NI 5 – Overall/general satisfaction with the local area; NI 9 – Use of public libraries; NI 18 – Adult re-offending rates for those under probation supervision; NI 189 – Flood and coastal erosion risk management; NI 197 – Improved local biodiversity – proportion of local sites where active conservation management is being achieved. (Local Indicators)

2 Executive Summary

This report has been prepared to offer an overview and analysis of the performance reported towards achievement of targets for indicators included in Local Area Agreement 2.

Overall performance achieved for 2009/10, the second year of LAA2 was broadly similar to that achieved in year one. Following completion of the Refresh process and as greater clarity was developed with other data sets an improvement was seen in the numbers of indicators for which confirmed baseline and annualised targets could be established, helping to improve the levels of performance reporting achieved at the year end. A significant proportion of indicators, do however, continue to present issues around the availability of information in a timely fashion or which is relevant to the reporting period/year being applied. (Refer section 2.1)

For some, this situation will continue to influence the likelihood of a complete set of outcomes at the conclusion of the Agreement, particularly where the information is sourced from central data resources such as Office for National Statistics and Department for Health where the majority of delays are seen.

(Performance reported is subject to outcomes reported as at 18th June 2010).

2.1 Performance Overview

Performance in the second year was broadly similar to that achieved in the first but the margin between numbers of indicators meeting target and those failing to meet target has not been reduced and there is a suggestion that the position may have worsened between the two years. The impact of a depressed economy and increased levels of unemployment and pressures on budgets across the Council and its partners may be seen to have contributed to this outcome both on the outcomes resulting and to the levels of resource being able to be committed and the range of initiatives that can be applied.

Performance has remained strong with the Community Safety Partnership (formerly Crime and Disorder Reduction Partnership) around combating areas such as criminal damage and assault with injury principally through strong partnership working between the police, the council and its other partnership members. There has also been improvement achieved by the Environment and Economic Partnership in areas associated with the green agenda principally reduction of landfill volumes and management of CO₂ levels.

However, issues remain around academic attainment captured within the group of statutory indicators, continues to reflect in the level of measures not meeting target by the Children's Trust. While improvement was seen with certain measures in year two, this success might be attributed to the introduction of targets in years two and three, which, while more realistic in terms of achievement within the three year period for this agreement might equally be seen to be less challenging than those that were applied in the first year of the Agreement. The Schools re-organisation programme and Pathfinder project with Cowes High school may be considered to offer an opportunity for gaining a renewed impetus to academic attainment although the end of the agreement may come too soon for the true effect of these changes to become apparent.

Equally, factors such as the recent economic downturn may have some impact over the remaining period of the Agreement, as the lack of opportunity for career development and training that has resulted, may reduce the aspirations for certain groups of young people as reflected in the increasing levels known as NEET (Not in Employment, Education and Training) on the Island.

Cited by a number of measure owners as affecting a number of indicators relevant to young people, a common issue experienced in year two had been a lack of opportunity to engage with pupils through Island High schools. This had limited the fulfilment of a number of initiatives reliant on involving young people as a part of the process for improved levels of success, particularly in areas such as health and crime reduction (eg, Chlamydia screening; alcohol and substance misuse awareness). The issue was highlighted at a recent meeting of LAA Measure Owners and the Chief Executive offered to take this forward and write an open letter to all Head Teachers in order to seek a resolution to the barriers that currently persist.

Issues remain around the levels of indicators where their ability to report is impacted as previously advised as 'Unable to Report'. As previously identified, some of these may be due to a reliance on Place Survey results or delayed release of data from other bodies. However, other areas of impact are due to issues arising from the mechanisms for measurement defined in the indicator definition and which have either never been implemented or were withdrawn e.g. the Healthcare Commission's local Health Services Survey applied with NI 124 which was withdrawn and for which a replacement methodology is awaited. While this situation was seen to have improved between the first and second years of the agreement there is a degree of uncertainty to whether any further improvement will be seen in the final year.

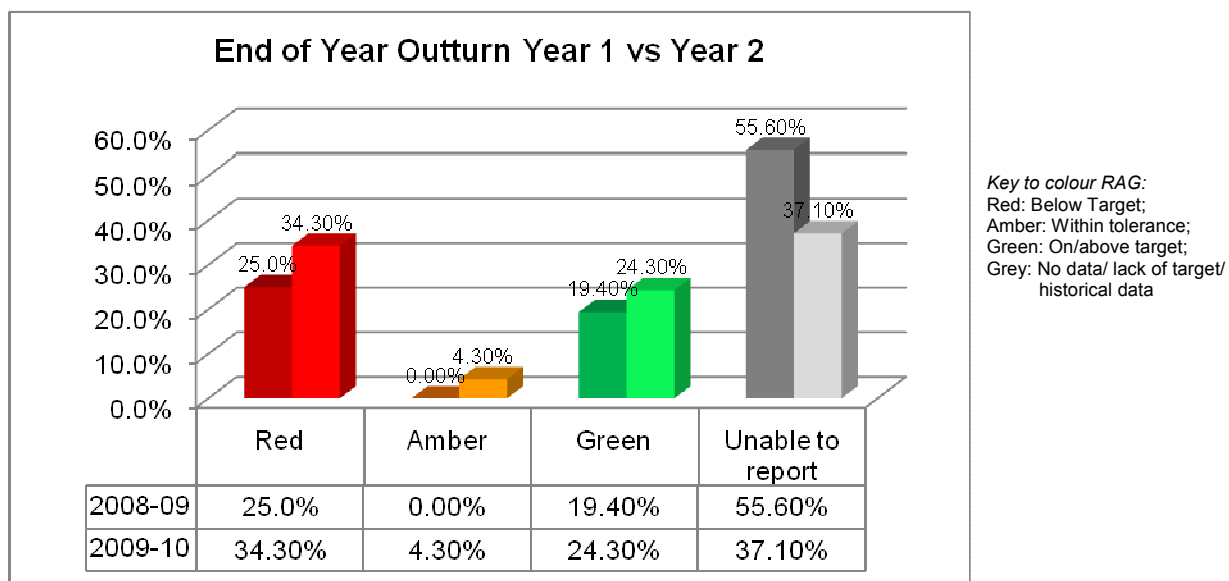
These outcomes are similarly reflected in the levels of success being achieved in attainment of the outcomes associated with the fifteen priority areas associated with LAA2 and this is explored in further detail in section 2.4)

2.2 Overview to performance of designated indicators

As an Appendix to this report, a series of highlight reports are presented, each providing an overview to the performance achieved for each of the 35 designated indicators, together with a localised comparison at regional level to the performance attained by other LSPs in the South East using the most recent comparator data available from the government's central data Hub.

2.3 Performance Summary for Year 2 of the Local Area Agreement 2

2.3.1 Overall performance for the year



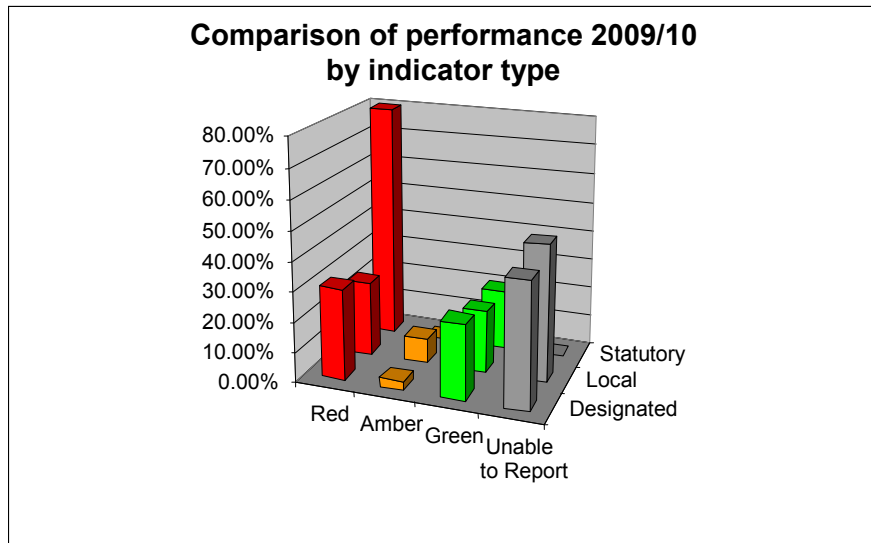
2.3.2 Performance reported by quarterly interval

	RAG Rating for performance							
	RED		AMBER		GREEN		UNABLE TO REPORT	
	09/10	08/09	09/10	08/09	09/10	08/09	09/10	08/09
Quarter 1 (April – June)	8.5%	6.6%	4.2%	2.6%	8.5%	7.9%	78.8%	82.9%
Quarter 2 (July – September)	23.9%	7.9%	0.0%	1.3%	12.7%	7.9%	63.4%	82.9%
Quarter 3 (October – December)	21.1%	6.6%	1.4%	1.3%	14.1%	5.3%	63.4%	86.8%
Quarter 4 (January – March)	33.8%	35.9%	4.2%	1.3%	22.5%	12.8%	39.5%	50.0%
End of Year (Using Annual Targets)	34.3%	25.0%	4.3%	0.0%	24.3%	19.4%	37.1%	55.6%

Performance for the year has produced a margin of variance between those indicators meeting target (24.3%) and those below target (34.3%) of ten percentage points. When compared to 2008/09 where the margin given was 5.6 percentage points, a worsening of performance is suggested. However, 2009/10 also included 4.3% of measures where performance was within tolerance of the target, suggesting that this widening of situation could be accounted for by measures where the target had not been met but performance had been close to its attainment.

A more significant variance is seen between the two year's results with the reduction in numbers of measures classed as 'Unable to report', down from 55.6% (2008/09) to 37.1% (diff. -18.5 percentage points), due to factors such as more targets and baselines having been set and the improved capture and reporting of data. While this issue is still not entirely resolved it does represent a marked improvement and demonstrates that performance outturn figures were available, providing for greater accuracy in the determination of progress being made with LAA2.

2.3.3 Performance by indicator category



Designated Indicators – the 35 core indicators that make up LAA2

Local Indicators – 23 indicators selected to support achievement of the designated indicators

Statutory Indicators – a series of ten indicators required by the Department for Children Schools and families

Reflecting on performance achieved in year two across the three categories of indicator included in LAA2, performance is broadly consistent for both the designated and local indicators. However, the picture is somewhat different for the set of Statutory Indicators which are focused primarily towards academic attainment. The above table clearly shows the margin of difference occurring for those measures where performance was below target such as NI 94 (Progression by 2 levels in Maths between Key Stage 1 and Key Stage 2) and those meeting target such as NI 87 (Secondary school persistent absence rate). The difference is made more striking by comparison with the performance given for the designated and local sets of indicators as highlighted in the above graph.

2.4 Performance by theme and associated Partnership Board:

The LAA2 document being worked to, originally distributed the selected range of indicators across four themes associated with the Sustainable Community Strategy (Eco Island) applying indicators that were aligned to fifteen key priorities or outcomes by which improvements in performance could be achieved. Many of these priorities and related outcomes can be translated in to the six key priority areas² the Island Strategic Partnership has since adopted.

This section of the report will offer a reflective to the performance achieved across the year towards achievement of these priorities together with a review of performance at quarterly intervals, by each partnership board.

² Alcohol; Domestic abuse; Obesity; Carbon Footprint; Better Jobs; Bullying

2.4.1 Thriving Island – Environment and Economic Partnership

Associated Priorities as defined in LAA2: (Performance for 2008/09 and 2009/10 is given together with 09/10 figure converted to a percentage)

Priority Heading	No. of measures	RED		AMBER		GREEN		UNABLE TO REPORT					
		08/09	09/10	%	08/09	09/10	%	08/09	09/10	%			
<i>Protect and ensure our Island's natural beauty</i>	6	1	2	33.3	0	1	16.7	2	1	16.7	3	2	33.3
<i>Create wealth and reduce our carbon footprint at the same time</i>	5	1	0	0.0	0	1	20.0	1	3	60.0	3	1	20.0
<i>Produce as much of our energy as possible from renewable sources.</i>	1	0	0	0.0	0	0	0.0	0	1	100	1	0	0.0
<i>Help all to share in the Island's economic success</i>	9	1	2	22.2	0	1	11.1	1	0	0.0	7	6	66.6

Improved performance was seen with priorities two and three both of which feature climate awareness as a part of the outcome impact with measures such as 177 (refer Appendix A page 34) and 175 dealing with use of public transport and alternatives to the car still providing strong performance. NI 186 (refer Appendix A page 35) is showing strong performance with the Island appearing in the upper quartile when compared with the rest of England. A number of initiatives such as the Island insulation scheme and the car share scheme have been promoted to assist performance for this indicator.

Clarity of performance for priorities one and four is still inhibited by the margin of measures where it is not possible to provide data, although performance may have been disproportionately influenced by the consequences of the downturn to the economy through reduced employment and training opportunities. Median earnings on the Island have not been helped by the redundancies at Vestas and BAE. A number of activities are being pursued to attract high growth companies to the Island leading to more highly paid jobs. It should be noted that some indicators were applied to more than one priority.

While overall performance can be seen to have improved in the second year, a high proportion (43%) of measures remain unable to be reported, as for many indicators such as Adult Learning (NI 80 and NI 163 - refer Appendix A page 31) and figures for Unemployment (NI 151 and NI 152 - refer Appendix A pages 28 and 29), the data is historic to the period being reported.

Key achievements

(Quarterly and Annual targets highlighted in yellow)

NI 193 - % of municipal waste land filled (local indicator)											
2008/09	Q1	Q2	Q3	Q4	2009/10						
64.8	55	41.31	50	36.17	50	64.4	50	38.14	50	51.05	50

While the end of year figure was marginally above target (+1.5 percentage points), performance across the year was broadly consistent and better than the target set. A consistent level of operation by the gasification plant across the year contributed to this outcome.

There had been a couple of 'blips' in the year with figures for December 2009 (64.4%) and January 2010 (78.7%) being significantly higher due to problems encountered with the operation of the gasification plant.

The performance achieved compared favourably with the results attained during 2008/09 where the outturn reported had consistently missed target, with the end of year figure missing its target by just under ten percentage points.

Data Unavailable

NI 185 - % CO₂ reduction from Local Authority operations (local indicator)

Due to the need to establish processes to meet the reporting requirements for this indicator, delays have been experienced with reporting performance outcomes for this indicator. Progress has been made in this respect and data has begun to be collected. Without any outturn figures for years one and two by which to offer a predicted trend it remains difficult to predict if the third year target is attainable.

NI 197 – Improved local biodiversity (local indicator)

Issues persist with the establishment of both a baseline figure and annualised targets for this indicator

Areas to Watch

(Quarterly and Annual targets highlighted in yellow)

NI 189 - % achieved for flood and coastal erosion risk management (local indicator)						
2008/09	Q1	Q2	Q3	Q4	2009/10	
100	100				0	100

The indicator is subject to an agreement between the Isle of Wight Council and The Environment Agency which act as the reporting authority. The Environment Agency assess and determine areas where work is required such as the Eastern Yar, attributing areas of responsibility to the Local Authority to fulfil.

A delay having occurred with the Environment Agency issuing the criteria on which IWC are to be measured, has impacted an assessment of performance and recording of outcome.

In June 2010, IW Council agreed a Shoreline Management Plan (May 2010) intended to balance the management of coastal flooding and erosion risks with natural processes and the consequences of climate change. This will have the effect of helping to support the process previously applied for this indicator.

2.4.2 Healthy and Supportive Island – Health and Wellbeing Partnership

Associated Priorities as defined in LAA2: (Performance for 2008/09 and 2009/10 is given together with 09/10 figure converted to a percentage)

Priority Heading	No. of measures	RED		AMBER		GREEN		UNABLE TO REPORT				
		08/09	09/10	08/09	09/10	08/09	09/10	08/09	09/10			
			%		%		%		%			
<i>Reduce levels of obesity in all ages</i>	3	0	2	0	0	0	1	0	3	0	0.0	0.0
<i>Improve health, emotional wellbeing and life expectancy across the Island</i>	12	2	5	0	0	3	0	0	7	7	0.0	58.3
<i>Support vulnerable people to live independent lives.</i>	7	1	3	0	0	2	2	2	4	2	28.6	28.6
<i>Ensure people of all ages have places to live and things to do in their local area</i>	4	1	0	1	0	1	3	1	1	1	75.0	25.0

Across the two years, overall performance had declined across the first three priorities due to factors such as mixed success achieved across the two age groups measured for childhood obesity, less positive results being given from the TellUs survey for our young people and a slower implementation of Individualised Budgets for our social care clients being achieved than was planned for.

It was only in the last of those priorities listed where any improvement was seen suggesting that we performed well at ensuring people of all ages have places to live and things to do. This can be evidenced by good performance in relation to supporting vulnerable people to live independently (NI 141 - refer Appendix A page 27) and to moving people on from living in temporary accommodation to a more long term housing (NI 156).

Results have been influenced by a lack of data through the withdrawal of questionnaires intended to fulfil the performance outturn – NI 124 and NI 128 (refer Appendix A pages 22 and 23) being examples of where this has occurred. For others the information is delayed due to the processes being applied as in the case of NI 120 (refer Appendix A page 19) data comes from the Office for National Statistics (ONS) and the most recent dataset available is for 2006-08.

Key achievements

(Quarterly and Annual targets highlighted in yellow)

NI 156 – Number of households living in temporary accommodation (local indicator)											
2008/09	Q1	Q2	Q3	Q4	2009/10						
181	175	135	174	114	173	113	172	170	121	170	170

Performance has seen a stepped reduction being maintained across the full year. This against the difficulties experienced by individuals and households as a consequence of the economic downturn.

A consequence seen from the prevailing economic circumstances has been a greater willingness on the part of Private Landlords to engage with Housing Services and allow those living in temporary accommodation to rent their properties. This has contributed to the success achieved with this indicator during the year.

A slight increase in numbers was seen at the end of the year which will need to be monitored in order to meet the final year target of 165.

Areas to Watch

(Quarterly and Annual targets highlighted in yellow)

NI 123 – Numbers Stopping Smoking (designated indicator)											
2008/09	Q1	Q2	Q3	Q4	2009/10						
959	870	207	169	123	190	187	232	289	296	800	887

While some momentum was maintained in the first quarter, performance over the remainder of the year has been hindered by a need to influence the more hardened smokers on the Island while working against the impact of the economic downturn which brought increased levels of anxiety for people through uncertainty of continued employment and increased redundancy against a contracting jobs market.

A number of initiatives were employed over the course of the year and some of these were linked to a National 'No Smoking Day' that took place in March.

The Final year is likely to continue to be challenging against continued uncertainty of employment and financial pressures as a consequence of restricted economic growth and that many of those now being targeted are long-term smokers for which the habit is more embedded to their lifestyle.

2.4.3 Safe and well-kept Island – Community Safety Partnership

Associated Priorities as defined in LAA2: (Performance for 2008/09 and 2009/10 is given together with 09/10 figure converted to a percentage)

Priority Heading	No. of measures	RED		AMBER		GREEN		UNABLE TO REPORT					
		08/09	09/10	%	08/09	09/10	%	08/09	09/10	%			
Reduce crime and substance misuse	9	2	2	22.2	0	0	0.0	4	4	44.5	3	3	33.3
Reduce Anti-Social Behaviour and Disorder	4	0	0	0.0	0	0	0.0	1	1	25.0	3	3	75.0
Reduce the fear of crime and increase public confidence.	1	0	0	0.0	0	0	0.0	0	0	0.0	1	1	100
Enhance how our local areas look and feel, now and in the future	1	1	1	100	0	0	0.0	0	0	0.0	0	0	0.0

Performance across all four priorities has remained consistent with that achieved in the previous year with a marginally higher level of measures achieving target than missing target. The relatively strong performance exhibited with the first of the outcomes listed is due to the momentum that has been maintained around criminal damage reduction, domestic crime arrest rate and first time entrants to the Youth Justice System.

While targets are still unavailable for NI 18, the probation service continues to work with the police and other agencies in relation to the prolific and priority offender (PPO) scheme to try and strengthen performance in the area of adult re-offending rates for those under probation supervision.

Performance for the fourth outcome is linked solely to the condition of non-principal roads which saw the negative variance from target increase in 2009/10. Again a number of indicators are applied across more than one priority outcome.

A number of the indicators included across the four priorities listed are reliant on the use of surveys, principal to these being the Place Survey which provides outturn for NI 4 and 17 (See Appendix A pages 2 and 5) together with NI 5 (% Overall/General satisfaction with local area) and was developed as a biennial event. Another, NI 7 (See Appendix A page 3) is intended to monitor engagement with VCO and third sector groups and uses a bespoke local survey of Third Sector organisations for which there may be a delay with the issuing of results.

Key achievements

(Quarterly and Annual targets highlighted in blue)

NI Xxx – Number of criminal damage incidents (local indicator)											
2008/09	Q1	Q2	Q3	Q4	2009/10						
2517	2653	649	638	114	173	1743	1278	1640	1917	2083	2554

Performance in the first half of the year maintained a momentum gained in the previous year, with figures for criminal damage incidents being below those recorded for the equivalent quarters in the preceding year.

This improved performance was maintained in the final half of the year with the end of year result being 17% lower than that recorded in 2008/09.

A number of initiatives were employed during the year, contributing to the positive outcomes achieved. Many of these employed the Police and Environment and Neighbourhood Officers working together.

Data Unavailable

NI 18 % - Adult re-offending rates for those under probation supervision (local indicator)
Targets remain to be determined and agreed for this indicator.

Areas to Watch

(Quarterly and Annual targets highlighted in amber)

NI 38 – Drug related (Class A) offending rate (designated indicator)						
2008/09	Q1	Q2	Q3	Q4	2009/10	
TBC	0.67	TBC	0.67	TBC	0.36	0.36

Due to a need to revisit data in order to establish a baseline figure against which targets could be applied, establishment of these was deferred until the second year, becoming defined in the third quarter.

An interim analysis of performance was undertaken by GOSE in December 2009 which had provided a performance indicator of 0.67 which was suggested to be off-trajectory.

Discussions were held between GOSE and the Commissioner for DAAT to review the analysis undertaken.

Work continues to be undertaken to support individuals admitting to the use of Class A Drugs in order to reduce their propensity to re-offend.

With a revised target now established for the third year, improved reporting should be possible and a clearer picture begin to develop with the performance being achieved.

2.4.4 Inspiring Island – Children’s Trust

Associated Priorities as defined in LAA2: (Performance for 2008/09 and 2009/10 is given together with 09/10 figure converted to a percentage)

Priority Heading	No. of measures	RED		AMBER		GREEN		UNABLE TO REPORT					
		08/09	09/10	%	08/09	09/10	%	08/09	09/10	%			
<i>Make sure our children achieve better than the national average at school and college</i>	17	12	10	58.8	0	0	0.0	1	5	29.4	4	2	11.8
<i>Reduce childhood inequalities by tackling poverty, neglect and domestic violence</i>	5	2	1	20.0	0	0	0.0	1	2	40.0	2	2	40.0
<i>Support families and Carers to provide a safe and positive environment for our young people</i>	10	4	5	50.0	0	0	0.0	2	3	30.0	4	2	20.0

Despite the improved level of measures reported on it is apparent from the spread of outcomes achieved that issues remain with both the first and third outcomes, both of which currently exhibit a ratio of 50% or over of measured outcomes that failed to meet target.

The first priority contains all of the statutory indicators and as such the majority of those associated with academic attainment where there is currently a majority failing to meet target. For the academic Year 08/09, the Island was amongst the worst performing LSPs in England for NI 93 (Progression by two levels in English between Key Stage 1 and Key Stage 2) having shown a decline in performance since 2006/07.

In the case of the third priority issues related to social care for young people have influenced the outcome. Performance has been under target for the past two years for NI 60 (refer Appendix A page 11) however a steady improvement has been seen over the past 12 months due to improvements being made in the quality of the data and in the embedding of business processes.

The picture for priority two is less clear due to the comparatively small number of indicators involved and a relatively small change could radically affect the ongoing position for this outcome.

Similar to the Health and Wellbeing Partnership issues around the timelines of data available impacts the reporting for some indicators such as NI 112 (refer Appendix A page 15) and NI 116 (refer Appendix A page 17) where the most recent data available is for 2008.

Key achievements

(Quarterly and Annual targets highlighted in blue)

NI 87 – Secondary school persistent absence rate (%) (statutory indicator)					
2008/09	Q1	Q2	Q3	Q4	2009/10
6.1	5.4	4.6	5.4	4.8	5.4

The figure given at Q2 was for the whole of academic year 2008/09. The target had been met following a decrease in the percentage of persistent absentees in three of the High schools in particular. Careful tracking of pupils and targeted work with those schools with the highest rates were seen as a means for further improvement.

The figure reported at the end of the year is indicated to currently be a provisional figure and demonstrates a marginal increase but still within target.

Areas to Watch

(Quarterly and Annual targets highlighted in amber)

NI 75 – Achievement of 5 or more A*-C grades at GCSE or equivalent including English and Maths (statutory indicator)					
2008/09	Q1	Q2	Q3	Q4	2009/10
41.2	59	41.5	59	41.6	59

Measurement of GCSE attainment is used as a general gauge of academic performance for an area.

Whilst the figure for 2009/10 shows a marginal improvement of 0.3% compared with 2008, the three year trend is reported to remain static and that performance remains below the national average by approximately 9%.

At the end of Quarter 3 it was reported by the Children's Trust that the Local Authority was working with the National Strategies and GOSE through an intervention project whereby key activities would be identified and the impact achieved monitored each term. The Secondary Local Authority team had also been restructured to deliver a focussed bspoke support through a commissioned model.

Unavailable data

NI 80 – % Achievement of a level 3 qualification by the age of 19 (local indicator)

Current data available is from 2007/08 and that for 2008/09 was due in 2010.

2.5 Summary of performance

Current status for the 15 priorities around which LAA2 was based suggests that only five are likely to be met with the majority (eight) demonstrating performance where the associated outcome would not be met in full.

The Partnership Environment and Economic Partnership demonstrated the strongest range of improvement, and the Community Safety Partnership maintained a consistent level of performance between the two years. The Health and Wellbeing Partnership recorded the greatest level of decline in performance across their priority set between the two years.

3. Conclusions

- 3.1 A review of the National Indicator Set (NIS) began in the latter half of 2009 in an attempt to rationalise the numbers of indicators needing to be applied. In part this included consideration to issues impacting the collection and relevance of data obtained. In addition consideration was given to where indicators had a limited or non-presence in Local Area Agreements. Subsequent to this, 18 indicators were identified as 'redundant' and removed from the full NIS list.

While this has had no immediate impact on the make-up of Isle of Wight's LAA2, there was a suggestion of further reviews and additional changes to be made. However, with the subsequent General Election and change of government resulting, there is a lack of clarity to what level of additional change may be anticipated to be made in 2010/11.

- 3.2 At the commencement of LAA2 there was a proposed reward element attached to the agreement, based on performance attained at its conclusion, against baseline and final year targets. A reward pot had been confirmed with the basis for calculation to be based on a combined performance of all designated indicators included in LAA2, rather than individual rewards applied to separate indicator targets.

The reward element would appear to be subject to inclusion in the Comprehensive Spending Review (CSR) planned for the autumn where it may be subject to reduced levels of reward or total removal. It has already been identified that the second half or the LPSA2 rewards will not now be received. This impacts a number of initiatives some of which were intended to support both LAA2 and the ISP's six key priority areas.

The full impact of the CSR and other reductions to grants received from central government by the principal partner agencies may be anticipated to impact the performance achievable in the third year of the agreement and planned initiatives or programmes beyond the end of LAA2.

- 3.3 Similarly the future of the Local Agreement programme remains unclear. There is currently no clear guidance available to whether a third LAA will be applied although it is currently considered to be unlikely. Much was made during the lead up to the election by the Conservative Party to 'The Big Society' which placed an emphasis on a community led style of approach to dealing with local issues and this may form the basis of a future arrangement. Such an approach may help to support the work of the Partnership Boards in a more productive way, channelling focus towards the outcomes achieved and benefits gained despite the lack of any monetary rewards being applied.